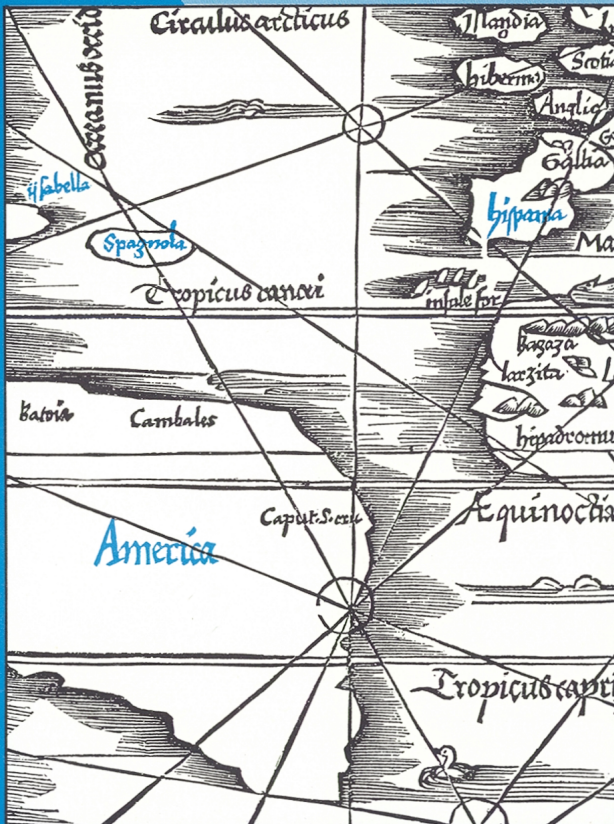


PMMLA

Publications of the
■
Modern Language
■
Association
■
of America
■

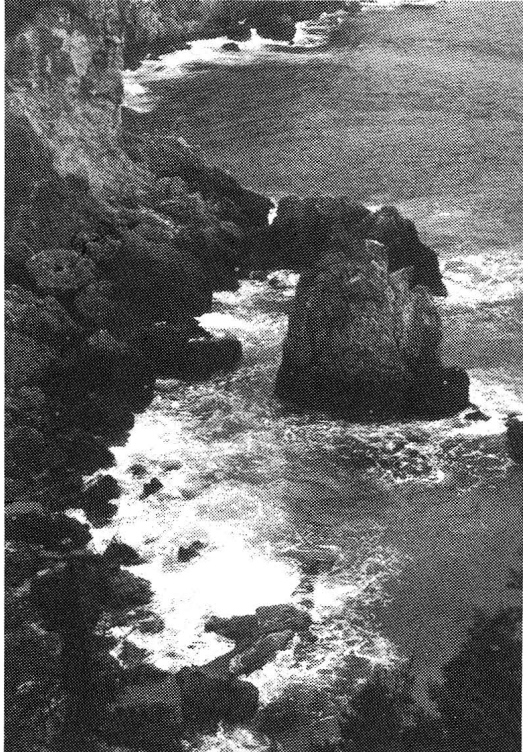


1 9 9 1

JANUARY

VOLUME 106 ■ NUMBER 1

New from
P R I N C E T O N



The Story of the *Odyssey*

Stephen V. Tracy

Stephen Tracy offers a vivid, fast-paced narrative that serves as a reading guide to Homer's monumental epic. He not only provides translations of key passages and traces the evolution of major themes in the *Odyssey*, but also helps new readers to understand the artistry of one of the best tales ever told.

Aimed at advanced readers as well, Tracy's work stresses an appreciation of how Homer has ordered his narrative, covering such topics as character interaction, family relationships, elements of poetic language, and the symbolic treatment of death, rebirth, growth, and knowledge.

"Students especially should be able to draw a great deal of knowledge and literary understanding from [*The Story of the 'Odyssey'*]."—Gregory Nagy, Harvard University

Paper: \$9.95 ISBN 0-691-01494-9 Cloth: \$29.95 ISBN 0-691-06855-0

Man in the Middle Voice

Name and Narration in the *Odyssey*

John Peradotto

John Peradotto concentrates on textual practices of naming and narrating in the *Odyssey* from a perspective that blends traditional philological with semiotic and narratological techniques. With terms drawn from

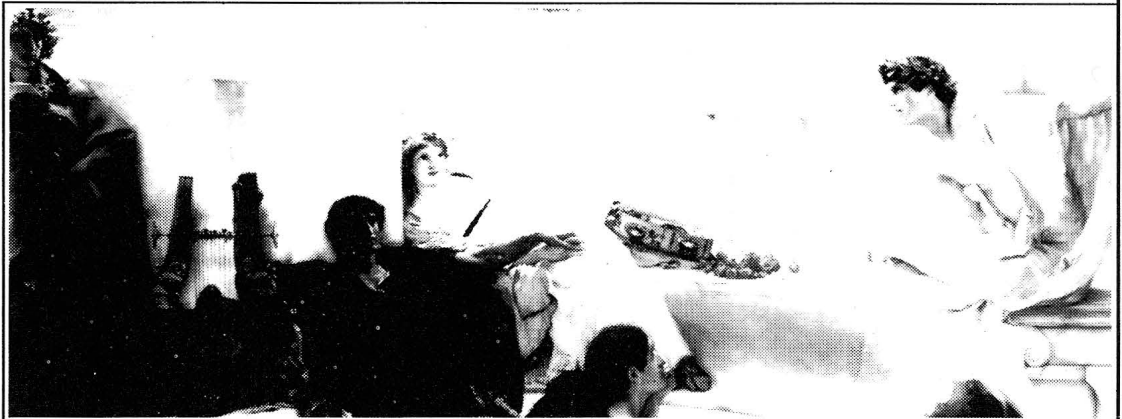
Bakhtin's concept of "dialogism," the *Odyssey's* two voices are characterized as "centripetal" and "centrifugal." As he examines the more audible, "centrifugal" voice, Peradotto shows how the poet's sense of power

over his material, represented in Odysseus' ability to narrate a fictitious world, creates a "character" of infinite variety.

"This is a rich contribution, methodologically and interpretively."—Seth L. Schein, Queens College

and The Graduate School, City University of New York
Martin Classical Lectures

Cloth: \$24.95 ISBN 0-691-06830-5



AT YOUR BOOKSTORE OR

Princeton University Press

41 WILLIAM ST. • PRINCETON, NJ 08540 • (609) 258-4900
ORDERS: 800-PRS-ISBN (777-4726)

January 1991

PMMLA

Publications of the
Modern Language Association
of America

Volume 106, Number 1

Published six times a year by the association

The Modern Language Association of America

Officers for the Year 1991

President: MARIO J. VALDES, *University of Toronto*
First Vice President: HOUSTON A. BAKER, JR., *University of Pennsylvania*
Executive Director: PHYLLIS FRANKLIN

Executive Council

For the term ending 31 December 1991

JONATHAN CULLER, *Cornell University*
JOAN DEJEAN, *University of Pennsylvania*
FRANCES FERGUSON, *Johns Hopkins University*
MYRA JEHLLEN, *University of Pennsylvania*

For the term ending 31 December 1992

ANDREW P. DEBICKI, *University of Kansas*
ELAINE SHOWALTER, *Princeton University*
DOMNA C. STANTON, *University of Michigan, Ann Arbor*

For the term ending 31 December 1993

SARA CASTRO-KLAREN, *Johns Hopkins University*
GERALD GRAFF, *Northwestern University*
CLAIRE KRAMSCH, *University of California, Berkeley*
NELLIE Y. MCKAY, *University of Wisconsin, Madison*

Trustees of Invested Funds

CAROLYN G. HEILBRUN, *New York, New York*
HUGH O'NEILL, *New York, New York*
MALCOLM B. SMITH (Managing Trustee), *New York, New York*

PMLA (ISSN 0030-8129) is published six times a year, in January, March, May, September, October, and November, by the Modern Language Association of America. Membership is open to those persons who are professionally interested in the modern languages and literatures. Annual dues, which include subscription to *PMLA*, are based on members' incomes and are graduated as follows: student members (four years maximum), \$10; new regular members (first year), \$25; regular members (income under \$12,000), \$10; regular members (income \$12,000–\$15,000), \$35; regular members (income \$15,000–\$20,000), \$45; regular members (income \$20,000–\$25,000), \$50; regular members (income \$25,000–\$30,000), \$55; regular members (income \$30,000–\$35,000), \$60; regular members (income \$35,000–\$40,000), \$65; regular members (income \$40,000–\$45,000), \$70; regular members (income \$45,000–\$50,000), \$75; regular members (income \$50,000–\$55,000), \$80; regular members (income \$55,000–\$60,000), \$85; regular members (income \$60,000–\$65,000), \$90; regular members (income \$65,000–\$70,000), \$95; regular members (income \$70,000–\$75,000), \$100; regular members (income \$75,000 and above), \$105; joint members (two individuals sharing the same household, who receive one subscription to *PMLA* but two copies of all other publications), add \$20 to dues category of higher-income member; foreign members, same as regular members (ascertain dues category based on American dollar equivalent). Membership applications are available on request.

The subscription price of *PMLA* for libraries and other institutions is \$96. A subscription including a bound volume at the end of the year is \$221, domestic and foreign. Agents deduct 4% as their fee. Single copies of the January, March, May, and October issues may be obtained for \$10 each; the November (Program) issue for \$30; the September (Directory) issue for \$45.

Issues for the current year are available from the MLA Member and Customer Services Office. Claims for undelivered issues will be honored if they are received within one year of the publication date; thereafter the single issue price will be charged.

For information about the availability of back issues, inquire of Kraus Reprint Co., Millwood, NY 10546; (914) 762-2200. Early and current volumes may be obtained on microfilm from University Microfilms, Ann Arbor, MI 48106. Purchase of current volumes on film is restricted to subscribers of the journal.

OFFICE OF PUBLICATION AND EDITORIAL OFFICES
10 Astor Place, New York, NY 10003-6981

All communications including notices of changes of address should be sent to the Member and Customer Services Office of the Association. If a change of address also involves a change of institutional affiliation, that office should be informed of this fact at the same time. Second-class postage paid at New York, NY, and at additional mailing office.

Copyright © 1991 by The Modern Language Association of America.

Library of Congress Catalog Card Number 12-32040. United States Postal Service Number 449-660.

POSTMASTER: Send address changes to *PMLA*, Member and Customer Services Office, Modern Language Association of America, 10 Astor Place, New York, NY 10003-6981.

Publications of the Modern Language Association

Published six times a year Indexes: Vols. 1–50, 1935; 51–60, 1945; 51–79, 1964

Editor: JOHN W. KRONIK, *Cornell University*

Managing Editor: JUDY GOULDING

Submissions Coordinator: LAURIE R. COHEN

Editorial Director: CLAIRE COOK

Assistant Editor: ERIC WIRTH

Editorial Assistant: LOUIS A. MORRA

Editorial Board

HEATHER DUBROW, 1992, *University of Wisconsin, Madison*

EMORY ELLIOTT, 1992, *University of California, Riverside*

MARTHA NOEL EVANS, 1991, *Mary Baldwin College*

LINDA HUTCHEON, 1992, *University of Toronto*

RUTH KLUGER, 1991, *University of California, Irvine*

GEORGE L. LEVINE, 1991, *Rutgers University, New Brunswick*

Advisory Committee

JONATHAN ARAC, 1994, *University of Pittsburgh, Pittsburgh*

NINA BAYM, 1995, *University of Illinois, Urbana*

R. HOWARD BLOCH, 1992, *University of California, Berkeley*

ROSS CHAMBERS, 1991, *University of Michigan, Ann Arbor*

DOUGLAS COLLINS, 1993, *University of Washington*

LEO DAMROSCH, 1991, *Harvard University*

SUSAN STANFORD FRIEDMAN, 1994, *University of Wisconsin, Madison*

ARTHUR F. GANZ, 1994, *City College, City University of New York*

ANNE RUGGLES GERE, 1993, *University of Michigan, Ann Arbor*

FREDERICK GOLDIN, 1991, *City College and Graduate Center, City University of New York*

CHARLES B. HARRIS, 1994, *Illinois State University*

JOAN HARTWIG, 1994, *University of Kentucky, Lexington*

MARGARET HOMANS, 1991, *Yale University*

ROBERTA JOHNSON, 1993, *University of Kansas*

SETH LERER, 1994, *Stanford University*

RONALD LEVAO, 1992, *Rutgers University, New Brunswick*

LEAH MARCUS, 1993, *University of Texas, Austin*

PAUL L. MARIANI, 1994, *University of Massachusetts, Amherst*

TANIA MODLESKI, 1991, *University of Southern California*

SYLVIA MOLLOY, 1992, *Yale University*

GARY SAUL MORSON, 1991, *Northwestern University*

JOHANNA NICHOLS, 1991, *University of California, Berkeley*

LINDA ORR, 1992, *Duke University*

TILOTTAMA RAJAN, 1994, *University of Western Ontario*

ROBERT J. RODINI, 1991, *University of Wisconsin, Madison*

MARGERIE SABIN, 1994, *Wellesley College*

EGON SCHWARZ, 1991, *Washington University*

JOSEPH T. SKERRETT, JR., 1993, *University of Massachusetts, Amherst*

GARETT STEWART, 1993, *University of California, Santa Barbara*

C. JAN SWEARINGEN, 1993, *University of Texas, Arlington*

JAMES G. TURNER, 1994, *University of California, Berkeley*

A Statement of Editorial Policy

PMLA welcomes essays of interest to those concerned with the study of language and literature. As the publication of a large and heterogeneous association, the journal is receptive to a variety of topics, whether general or specific, and to all scholarly methods and theoretical perspectives. The ideal *PMLA* essay exemplifies the best of its kind, whatever the kind; addresses a significant problem; draws out clearly the implications of its findings; and engages the attention of its audience through a concise, readable presentation. Articles of fewer than 2,500 words or more than 9,000 words are not considered for publication. The word count includes notes but excludes translations, which should accompany foreign language quotations. The MLA urges its contributors to be sensitive to the social implications of language and to seek wording free of discriminatory overtones.

Only members of the association may submit articles to *PMLA*. Each article submitted is sent to at least one consultant reader and one member of the Advisory Committee. Articles recommended by these readers are then sent to the members of the Editorial Board, who meet periodically with the editor to make final decisions. Until a final decision is reached, the author's name is not made known to consultant readers, to members of the Advisory Committee and the Editorial Board, or to the editor.

Submissions, prepared according to *The MLA Style Manual*, should be addressed to the Editor of *PMLA*, 10 Astor Place, New York, NY 10003-6981. An author's name should not appear on the manuscript; instead, a cover sheet, with the author's name, address, and the title of the article, should accompany the article. Authors should not refer to themselves in the first person in the submitted text or notes if such references would identify them; any necessary references to the author's previous work, for example, should be in the third person.

Criticism in Translation

MLA members are invited to submit to the *PMLA* Editorial Board proposals for translations. Articles, as well as chapters or sections of books that can function as independent units, will be considered. The originals may be in any language. Two types of proposals are welcome: (1) significant scholarship from earlier periods that has not lost its forcefulness and whose retrieval in English in *PMLA* would be a noteworthy event for a broad body of readers or (2) contemporary work of sufficient weight and potential influence to merit the attention of the field as a whole.

A member who wishes to make a proposal should first ascertain that no previous English translation exists. The proposer should then provide the managing editor with the following materials: (1) a photocopy of the original essay, (2) an extended summary of the entire essay in English, (3) an introductory statement of approximately 1,000 words, prepared in accordance with MLA style, that will be published with the essay if the essay is accepted, (4) information on the copyright status of the original. In addition, if the proposer wishes to serve as translator of the essay or to designate a translator (who must also be an MLA member), a 1,000-word sample of the translation should be submitted; otherwise the Editorial Board will select a translator.

The translated essays should normally not exceed *PMLA*'s 9,000-word limit. The Editorial Board will approve or decline the proposals, evaluate the quality of the translations, and cooperate with the proposers and translators.

Contents

Special Topics	6
Forthcoming in <i>PMLA</i>	7
Editor's Note	8
Nobel Lecture 1989. In Praise of Storytelling <i>Camilo José Cela</i>	10
Hispanic Cluster	
Introduction <i>John W. Kronik</i>	18
Decentering Garcilaso: Herrera's Attack on the Canon <i>Ignacio Navarrete</i>	21
Narrating the Past: History and the Novel of Memory in Postwar Spain <i>David K. Herzberger</i>	34
<i>La tía Julia y el escribidor</i> : The Writing Subject's Fantasy of Empowerment <i>Carlos J. Alonso</i>	46
Aesthetics, Ethics, and Politics in Donoso's <i>El jardín de al lado</i> <i>Ricardo Gutiérrez Mouat</i>	60
"Mountaigny Saith Prettily": Bacon's French and the Essay <i>Kenneth Alan Hovey</i>	71
Suffering and Sensation in <i>The Ruined Cottage</i> <i>Karen Swann</i>	83
In Defense of Plato's <i>Gorgias</i> <i>James L. Kastely</i>	96
Canonicity <i>Wendell V. Harris</i>	110
Forum	122
Forthcoming Meetings and Conferences of General Interest	137
Index of Advertisers	139
Professional Notes and Comment	152
Announcements 152	
Journal Notes 154	
In Memoriam 156	
Abstracts	190

Cover illustration: Facsimile of a portion of a map by Laurentius Frisius for his 1522 edition of Ptolemy's *Geographia*. Reprinted from Justin Winsor, ed., *Spanish Exploration and Settlements in America from the Fifteenth to the Seventeenth Century*, Boston: Houghton, 1886, 175.