

ROYAL ASIATIC SOCIETY

FELLOWSHIP APPLICATION FORM

Please complete this form clearly to apply for election, and send to:

The Director, Royal Asiatic Society, Stephenson Way, London NW1, 2HD UK.

www.royalasiaticsociety.org

Name

(Please indicate the surname, or part of the name it should be indexed under, by underlining)

Occupation

Address

.....

Email:

If you are a student please provide the name of your tutor.

Tick

I would like my name and contact details to be included in the fellows list in printed form and/or online

Signed

Date

Membership and Subscription

The Society's Byelaws set out the membership requirements as follows:

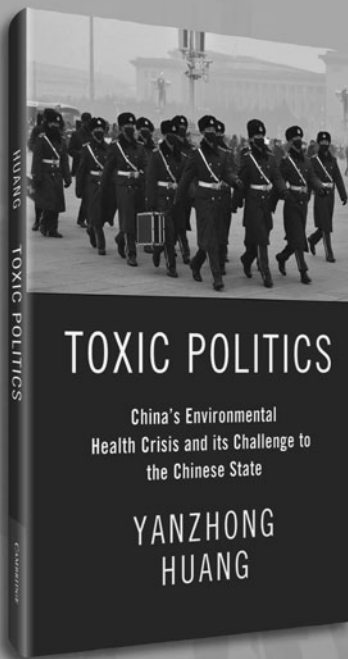
1. Anyone wishing to become a Fellow must be nominated by a Fellow of the Society and a seconder, each acting on personal knowledge that the candidate is likely to be a suitable and useful Fellow. The nominating Fellow and the seconder shall address the Secretary in writing and give the candidate's name, status, occupation and address.
2. A candidate for Fellowship may, instead of being nominated by a Fellow of the Society, address an application in writing to the Secretary giving the required information above and supported by a letter of recommendation from his head of department or supervisor or other responsible person who need not be a Fellow of the Society.
3. It shall be within the power of the Council, on being satisfied as to the credentials of any particular candidate in exceptional circumstances, to dispense with these conditions.
4. The annual subscription is:

	<i>£</i>	<i>p</i>
Fellows residing in the British Isles	90.00	
If paying by direct debit	70.00	
Fellows residing abroad	65.00	
If paying by direct debit	50.00	
Fellows residing in South or Central Asia.	55.00	
If paying by direct debit	40.00	
Student Fellows	40.00	
If paying by direct debit	30.00	
Affiliated Fellows residing at the same address, not receiving separate notices or the Journal	35.00	
If paying by direct debit	25.00	
Life Fellowship	1,700.00	
5. The first payment of subscription is due on election, but if a candidate is elected in November or December of any year, the first annual subscription shall cover the year beginning 1st January next after his election.
6. Annual subscriptions shall be due on the first day of January of each year.

TOXIC POLITICS

China's Environmental Health Crisis and
its Challenge to the Chinese State

YANZHONG HUANG



“ In this astonishingly prescient analysis, Yanzhong Huang zeroes in on the vital link between China's political health and its physical health. His tough, fair-minded, deeply knowledgeable book not only diagnoses grave problems lurking behind China's environmental progress but also provides a cautionary note about China's bid for global leadership. Anyone who wants to predict China's growth prospects needs to read this. ”

Evan Osnos, author of *Age of Ambition*

FOLLOW US ON SOCIAL MEDIA

- 📖 CambridgeUniversityPressPolitics
- 🐦 @CUP_PoliSci
- 📧 cupacademic



CAMBRIDGE
UNIVERSITY PRESS

NOTICE TO CONTRIBUTORS

The *Journal of the Royal Asiatic Society* promotes original, innovative, and rigorous research relating to Asia and all its cultures. It is a multi-disciplinary Journal published in four parts each year. It accepts specialist articles based on path-breaking new research, but the Editor also welcomes submissions that deploy inter-disciplinary and comparative research methods, or essays that make new knowledge and interpretations more readily accessible to a wider readership. From time to time the Journal publishes special issues containing articles on related themes originating from seminars, workshops, or conferences. Such issues may be the responsibility of a guest editor. The Royal Asiatic Society was founded in 1823 for 'the investigation and encouragement of the science, literature and the arts in relation to Asia': the Society's publications in journal and monograph form since then are judged by these criteria.

Recent Special Issues have included:

- Vol. 20 pt 1 'Romanisation in Comparative Perspective'. Guest Editor: İlker Aytürk
- Vol. 22 pt 1 'Medieval India and the Paramara Dynasty'. Guest Editor: Michael Willis
- Vol. 23 pt 1 'Perfumery and Ritual in Asia'. Guest Editor: Dinah Jung
- Vol. 23 pt 2 'Textiles as Money on the Silk Road'. Guest Editors: Valerie Hanson and Helen Wang
- Vol. 24 pt 3 'Isna 'Ashari and Isma'ili Shi'ism: from South Asia to the Indian Ocean'. Guest Editors: Justin Jones and Ali Usman Qasmi
- Vol. 26 pts 1 and 2 'The Mongols and Post-Mongol Asia: Studies in Honour of David O. Morgan'. Guest Editors: Timothy May and Peter Jackson
- Vol. 27 pt 4 'Feeling Modern: The History of Emotions in Urban South Asia'. Guest Editors: Elizabeth Chatterjee, Sneha Krishnan and Megan Eaton Robb
- Vol. 28 pt 3 'From Outside the Persianate Centre: Vernacular Views on "Ālamgīr"'. Guest Editors: Anne Murphy and Heidi Pauwels

For full details about the Journal, please refer to the instructions for contributors which can be found at: <https://www.cambridge.org/core/journals/journal-of-the-royal-asiatic-society/information/instructions-contributors> Submissions Papers should be submitted via the following website: <http://mc.manuscriptcentral.com/jras>. If there are any difficulties please contact the editorial office at cdb@royalasiaticsociety.org OR journal@royalasiaticsociety.org.

Submission of an article will be taken to imply that it has not been previously published and that it is not on offer to any other publisher.

Authors of articles published in the journal assign copyright to the Royal Asiatic Society (with certain rights reserved) and will receive copyright assignment forms for signature on acceptance of their papers. Authors are responsible for obtaining permission to reproduce any material in which they do not own copyright, to be used in both print and electronic media, and for ensuring that the appropriate acknowledgements are included in their manuscript. The Editor welcomes expressions of all shades of opinion, but responsibility for them rests with their author. All editorial communications should be addressed to cdb@royalasiaticsociety.org or journal@royalasiaticsociety.org, or The Editorial Office, The Royal Asiatic Society, 14 Stephenson Way, London NW1 2HD, UK.

Printed in Great Britain by Bell & Bain Ltd, Glasgow.

This journal issue has been printed on FSC-certified paper and cover board. FSC is an independent, nongovernmental, not-for-profit organization established to promote the responsible management of the world's forests. Please see www.fsc.org for information.

Journal of the Royal Asiatic Society

VOLUME 30 · PART 4 · OCTOBER 2020

CONTENTS

The Many Deaths of the Last ‘Abbāsīd Caliph al-Musta‘šim bi-llāh (d. 1258) BY NASSIMA NEGGAZ	585
The Bazaar, the State, and the Struggle for Public Opinion in Nineteenth-Century Afghanistan BY ALI KARIMI	613
Surrounding the Sacred Space: Two Painted Scrolls from the Collection of Namgyal Monastery in Mustang, Nepal BY CHIARA BELLINI	635
<i>CORRIGENDUM</i> Surrounding the Sacred Space: Two Painted Scrolls from the Collection of Namgyal Monastery in Mustang, Nepal BY CHIARA BELLINI	679
A Tocharian tale from the Silk Road: A philological account of <i>The Painter and the Mechanical Maiden</i> and its resonances with the Western canon BY NINA BEGUŠ	681
On the Authorship of the Old Turkic Inscriptions BY CHEN HAO	707
From Evil Women to Dissolute Rulers: Changes in Gender Representation across the <i>Zuoqibuan</i> , <i>Guoyu</i> , and <i>Shiji</i> BY LEI YANG	721
The Qing Regulation of the Sangha in Amdo BY BRENTON SULLIVAN	737
BOOK REVIEWS	771

www.royalasiaticsociety.org

Cambridge Core

For further information about this journal
please go to the journal website at:
cambridge.org/jra



MIX
Paper from
responsible sources
FSC® C007785

CAMBRIDGE
UNIVERSITY PRESS