

Journey into the deep.



**Specimen:** Humpback Whale (Genus: Megaptera)  
**Instrument:** The Naked Eye

Journey into the deeper.



**Specimen:** Leaf of Arabidopsis Thaliana  
**Instrument:** Hitachi S-3500N SEM

The journey to discover and understand that which cannot be readily seen has often inspired bold exploration.

Hitachi seeks to further that journey by manufacturing leading instrumentation built on a solid foundation of reliability, technology, and technical acumen. Hitachi's nanotechnology tools — a wide variety of ELECTRON MICROSCOPES — will empower countless applications to produce stronger, faster, smarter materials that promise to enhance our lives for the better.

© Hitachi High Technologies America, Inc.

Electron Microscope Division Headquarters  
5100 Franklin Drive  
Pleasanton, CA 94588  
Sales Phone: (800) 227-8877  
Service Phone: (800) 253-3053  
www.hitachi-hta.com

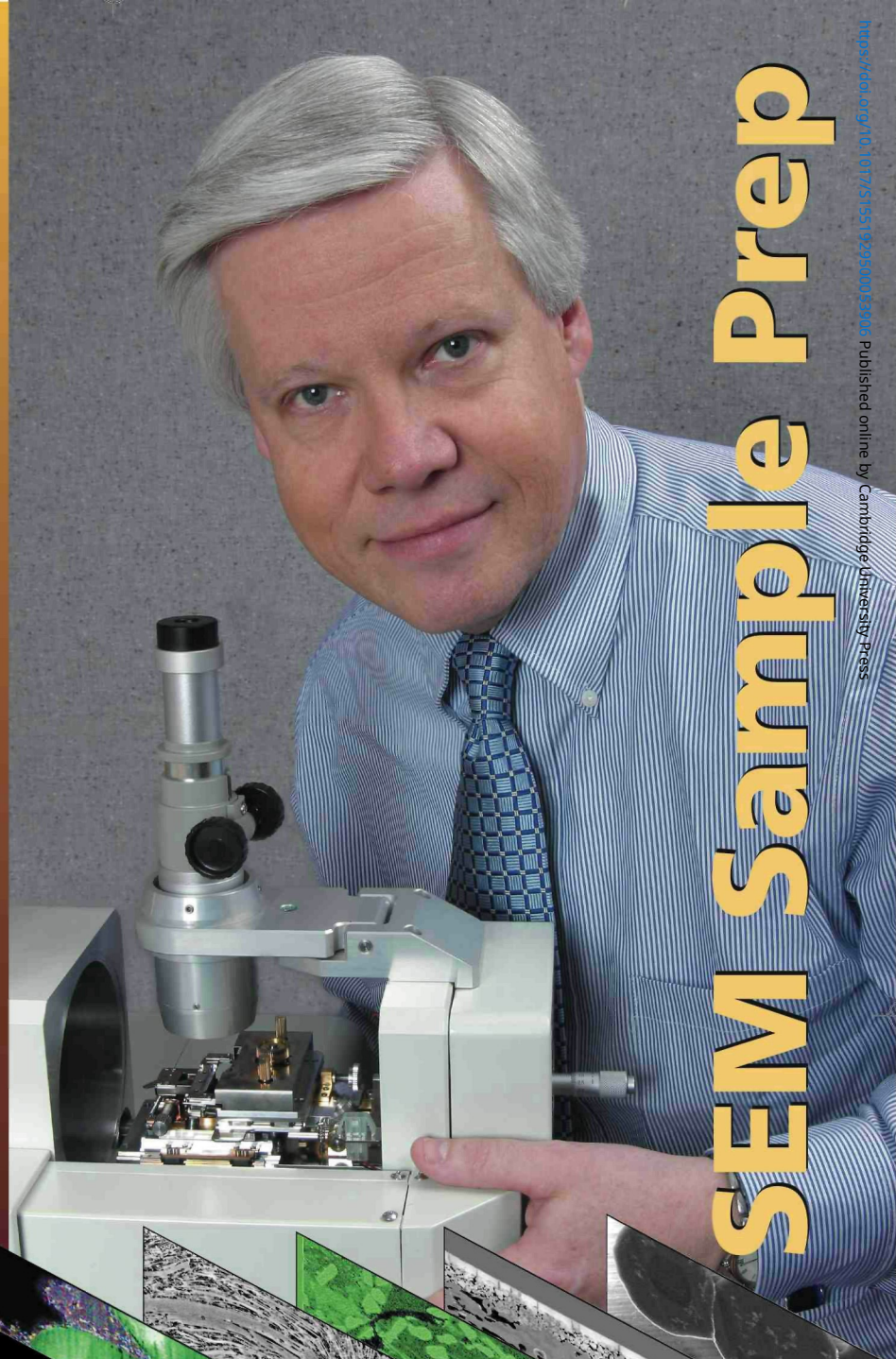
**HITACHI**  
Inspire the Next

# It's How You **SLICE** It!

The new JEOL cross section polisher slices and polishes pristine cross sections of the most challenging samples, from amalgams with low melting points to multi-layered composites of hard and soft materials.

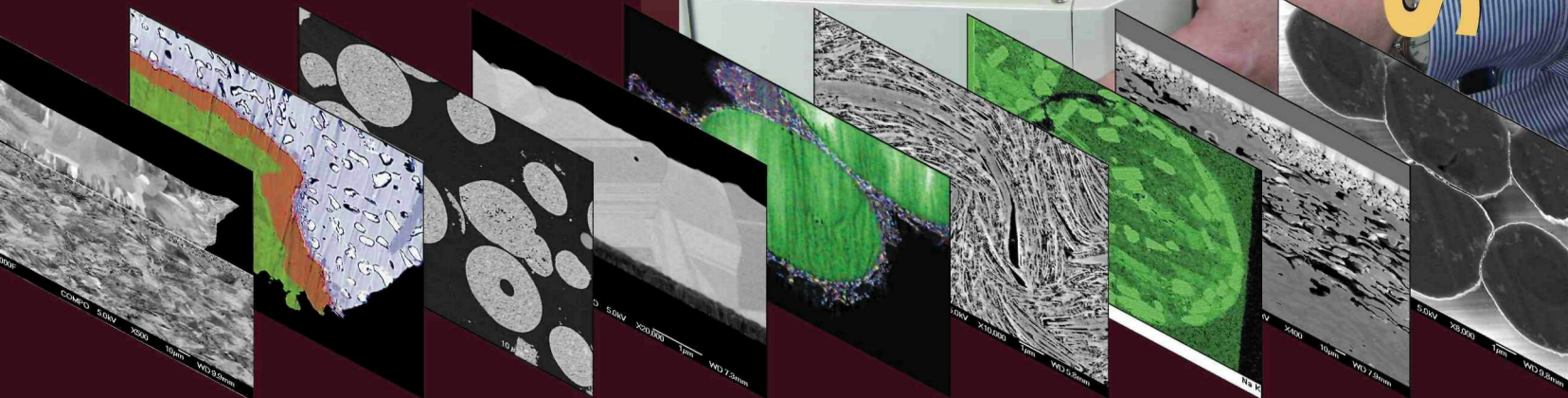
Using an ion beam, the JEOL CP produces true representations of a wide variety of materials, preserving grain structure, interfaces, and surfaces without deformation. Whether you work in routine failure analysis or require unparalleled precision for difficult samples, you need CP for:

- Composites and low melting point materials
- Thin coatings from metals to cosmetics
- Voids and adhesion
- Large area samples
- Perfect EBSD patterns
- Clean ion slicing
- Simple operation



# SEM Sample Prep

<https://doi.org/10.1017/S1521582020000744> Published online by Cambridge University Press



Wire Bond

Solder Bump

Ceramic Beads

Thin Film

Eyelash  
with Mascara

Graphite

Granular  
Medicine

Paper

Color  
Toner

See what you've been missing!

View our gallery of images at: [www.jeol.com/CP](http://www.jeol.com/CP)  
or call to arrange an expert demo.

Another  
**Extreme Imaging**  
solution from

# JEOL

Stability • Performance • Productivity  
[www.jeol.com](http://www.jeol.com)