



Herbert's Quarry, South Wales – an analogue for host-rock alteration at a cementitious radioactive waste repository?

ELIZABETH B. A. MOYCE^{1,*}, ANTONI E. MILODOWSKI², KATHERINE MORRIS³ AND SAMUEL SHAW³

¹ Earth Surface Science Institute, School of Earth and Environment, University of Leeds, Leeds LS2 9JT, UK

² British Geological Survey, Nicker Hill, Keyworth, Nottingham NG12 5GG, UK

³ Research Centre for Radwaste and Decommissioning, School of Earth, Atmospheric and Environmental Sciences, The University of Manchester, Manchester M13 9PL, UK

[Received 31 October 2014; Accepted 23 June 2015; Associate Editor: Nick D. Bryan]

ABSTRACT

Cement in radioactive waste repositories will produce leachates of $\text{pH} > 10$ which may alter the host rock, affecting its ability to act as a barrier to radionuclide migration. To complement the many laboratory and modelling studies of rock alteration in cement leachates, analogue sites have been investigated to understand reactions at time scales relevant to geodisposal. However, analogue site histories may be poorly constrained and these systems may be influenced by site specific factors. Therefore increasing the number of sites studied is important to minimize uncertainty in the applicability of results. Herbert's Quarry has been characterized and assessed as a potential anthropogenic analogue. Streamwater sampling at the site identified Ca-rich fluids, $\leq \text{pH} 12$, analogous to cement leachates. However, rock and sediment samples exhibited extensive CaCO_3 precipitation in these fluids and no reaction of silicate rock. The streamwaters were also found to be oxidizing, unlike the reducing conditions expected at a repository, and temperatures were $15\text{--}25^\circ\text{C}$ below those predicted for repositories. Therefore, Herbert's Quarry is believed to have limited applicability as an analogue in this context.

KEYWORDS: hyperalkaline, analogue, geodisposal, C–S–H, carbonate, streamwater.

Introduction

THE internationally preferred method for higher level radioactive waste disposal is burial within a deep Geological Disposal Facility (GDF) (OECD-NEA, 2008). The use of large quantities of cementitious materials is proposed in generic designs for the UK, Switzerland, France and Canada (DEFRA, 2008; NDA, 2010a; NAGRA, 2014; Andra, 2012; Nuclear Waste Management Organisation, 2010). In cementitious facilities, after

groundwater resaturation, cement components will dissolve and produce high-pH leachates. Initially the leachate will be KOH- and NaOH-dominated ($\text{pH} \sim 13$) but will evolve over 10^4 to 10^5 years to be $\text{Ca}(\text{OH})_2$ -dominated and fall in pH from $\sim \text{pH} 12.5$ to 10.5 (Atkinson, 1985; Berner, 1992). The alkaline leachate will migrate into the geosphere forming a Chemically Disturbed Zone (CDZ) in which the host rock may be altered, and its ability to act as a barrier to radionuclide migration may be affected.

Generally, laboratory studies have found that CDZ conditions cause the dissolution of silicate minerals and precipitation of C–S–H phases. However, these studies are necessarily short in

* E-mail: Lizzy.Moyce@arup.com
DOI: 10.1180/minmag.2015.079.6.16



The publication of this research has been funded by the European Union's European Atomic Energy Community's (Euratom) Seventh Framework programme FP7 (2007–2013) under grant agreements n°249396, SeclGD, and n°323260, SeclGD2.

timscale with few lasting longer than 1–2 years (Gaucher and Blanc, 2006; Fernandez *et al.*, 2010; Moyce *et al.*, 2014). To improve understanding of the potential mineral alteration processes at longer timescales, high-pH systems in the natural and anthropogenic analogues have also been studied (IAEA, 1989; Miller *et al.*, 2000; Savage, 2011). Pertinent to this study, examination of cements in historic structures and natural systems, such as Maqarin in Jordan and a number of saline lakes, have been studied as analogues for high-pH mineral alteration (Tinseau *et al.*, 2006; Techer *et al.*, 2012; Hodgkinson and Hughes, 1999; Milodowski *et al.*, 1998; Surdam, 1977; Taylor and Surdam, 1981, in Savage, 2010; Chermak, 1992, 1993). These studies have also shown high pH causes silicate mineral dissolution and secondary C–S–H phase formation but also suggest that over long timescales (10 s to 10⁶ years) C–S–H may evolve to K-feldspars or zeolites (Savage, 2011). However, analogue systems are generally poorly constrained and increasing the number of sites studied is important to increase confidence in their applicability to CDZ scenarios (McKinley and Alexander, 1992). Typically, analogue site characteristics should be representative of a cementitious GDF such as those outlined in Table 1.

This study aims to characterize Herbert's Quarry and assess its potential as an analogue site. The Quarry encompasses disused limestone workings and lime kilns operated over the past 200 years and contains high pH streamwaters (>pH 11) (Andrews *et al.*, 1997) resulting from water percolating through CaO-rich waste on site.

Herbert's Quarry background

Herbert's Quarry is located on the Black Mountain at (National Grid Reference SN73531 18971). The site is underlain by the Dowlais Limestone Formation which is comprised of tabular, thick-bedded limestones with shale interbeds and some local basal sandstones (British Geological Survey, 2014). Limestone was worked and calcined to produce lime (CaO) for over 200 years at the now disused site (workings extend for ~0.14 km²) and at least five streams flow northwards from the site (Calch, 2014).

Streamwaters of pH >11 have been identified at Herbert's Quarry attributed to residual CaO at the site forming Ca(OH)₂ in aqueous solution and raising streamwater pH (Andrews *et al.*, 1997). However, Ca(OH)₂ reacts with CO₂ under ambient

TABLE 1. Characteristics representative of a cementitious GDF.

Parameter	Range	References
Cement leachate chemistry and pH	KOH- and NaOH- or Ca(OH) ₂ -dominated fluid pH 10.5–13	Atkinson (1985); Berner (1992)
Groundwater chemistry	Site specific but salinity = 1000 ds mg l ⁻¹	Lagerblad and Trägårdh (1994); NDA (2010a)
Redox conditions	Reducing	NDA (2010b)
Temperature	40–50°C	NDA (2010a,b)
Reaction timescale	10s–1,000,000s years	Savage (2011)
Rock type	High strength (e.g. granite), lower strength sedimentary (e.g. clay) or evaporate	NDA (2010b)

conditions and reverts to CaCO₃, reducing solution pH. CaCO₃ deposits at Herbert's Quarry have been studied previously (Andrews *et al.*, 1997), indicating that some carbonation of Ca(OH)₂ has occurred, potentially minimizing the high-pH zone at the site.

Methodology

Two streams were sampled at low flow in summer 2013. The streams originated in spoil heaps (stream 1, grid ref. 273829, 218971; stream 2, grid ref. 273459, 219133) predominantly composed of angular limestone blocks ≤20 cm. Three minor streams also joined stream 1 (Sites X, Y and Z).

Eh, pH, temperature, total dissolved solids (TDS) and conductivity were measured along each stream. Salinity and dissolved oxygen were also measured and GPS coordinates recorded. At selected locations solution samples were taken. A 2 ml sample was taken for anion analysis (CO₃²⁻, Cl⁻, NO₃⁻, SO₄²⁻ and PO₄³⁻) by Ion Chromatography. An additional 10 ml sample was taken and acidified in 2% nitric acid for cation analysis by ICP-AES (Ca) and ICP-MS (Fe, Mn, Mg, S, Al, Si, Mg, K, Na, Sr, Ba, Ti, Zn, Co, Cr, Cu, P, Ni and Pb).

Rock samples from the stream beds at each sample point and blocks of siliceous rock,

cemented into tufa at the base of an ephemeral stream, were taken. The ephemeral stream was approximately 60 m west (approx. 273396, 219185) of stream 2. The rock samples were sectioned, resin embedded and examined under a Scanning Electron Microscope (SEM).

Results

Fluid chemistry

Stream temperatures varied between 15–24°C during sampling depending on time of day measured. Eh varied between 9–286 mV, indicating oxic conditions in both streams (Fig. 1 and Table 2). Both streams were of alkaline pH at source, \leq pH 12.0 (Fig. 1 and Table 2), in agreement with the findings of Andrews *et al.* (1997). However, pH was elevated in stream 2 for only 20–80 m (to site 3) and in stream 1, although pH varied significantly as high-pH tributaries joined the main stream, pH remained elevated for only 180–240 m (to site 14). It was also noted that at stream 2 a freshwater source (stream 2, site 1; pH 7.94) joined and mixed with the high-pH stream (stream 2, site 2; pH 11.0). The difference in pH was indicated visually by white/grey suspended particles in the high-pH waters (discussed further in the following section on stream 2).

TDS measurements varied with pH by an order of magnitude between the highest pH areas and those below pH 10.5, mirroring a similar trend in conductivity (Fig. 1, Table 2). Streamwater chemistry showed that in the highest pH samples, Ca concentration was elevated to 100 mg l⁻¹ but fell markedly to <50 mg l⁻¹ in both streams as pH fell (Fig. 2a). Conversely, CO₃ concentration in solution rose in both streams as pH fell from tens to hundreds of mg l⁻¹, attributed to streamwater equilibration with atmospheric CO₂ (Fig. 2b). Aluminium concentration fell with pH from several hundreds of μ g l⁻¹ to 100–200 μ g l⁻¹ (Fig. 2c) while Mg concentration rose with falling pH from <50 μ g l⁻¹ to hundreds of μ g l⁻¹ (Fig. 2d). It was also noted that Si concentration was <9 mg l⁻¹ in all samples, with no discernible trend relative to pH.

Solid phase characterization

Stream 1

Round to sub-angular, 1–3 cm 'pebbles' with friable surfaces formed the first 100 m of the bed

of stream 1 (Fig. 3a and b). SEM examination showed these were fossil rich, angular limestone fragments \leq 20 mm in size coated in highly porous CaCO₃ (Fig. 3c–e). Interestingly, the CaCO₃ coatings exhibited distinct growth layers <10 μ m thick, parallel to the underlying limestone surfaces (Fig. 3e). These CaCO₃ coatings have been interpreted as precipitates formed as a result of the equilibration of atmospheric CO₂ with Ca²⁺ in solution, mediated by limestone surfaces. Minor occurrences of quartz particles up to 200 μ m in size were also identified entrained in the CaCO₃ coatings (Fig. 3f). Solid samples were not taken in the lower pH region of the stream, as non-hyperalkaline conditions are not analogous to the scenario considered.

Stream 2

At the head of stream 2, clear non-hyperalkaline water occurred for ~30 cm (stream 2, site 1) before mixing with cloudy high-pH water containing fine grained white/grey suspended particles (stream 2, sites 2 and 2a; see Table 2 and Fig. 4a). The cloudiness at sites 2 and 2a occurred across a 3 m \times 4 m pool and the stream bed in this high-pH zone was comprised of friable 'pebbles' (Fig. 4a). Downstream, where pH remained >pH 8.5, the stream bed was cemented with a layer of CaCO₃ tufa (Fig. 4b). The 'pebbles' at sites 2 and 2a were shown via SEM to be identical to the CaCO₃ 'pebbles' in stream 1. However, at stream 2 these were coated in a fine grained, white material similar to the suspended particles in the waters in this area. The fine grained coating and suspended material was isolated, analysed by SEM and found to be sub-rounded/angular, 50–100 μ m, CaCO₃ particles (Fig. 4c and d). This indicates that CaCO₃ formation is rapid in the zone where high-pH, Ca-rich water mixes with CO₃-rich freshwater.

Rock samples

To assess silicate mineral alteration at Herbert's Quarry, two silicate rocks were extracted from a dry stream bed ~60 m west of stream 2 (no silicate rocks were identified in streams 1 or 2). This stream bed was comprised of blocks of rock cemented within CaCO₃ tufa (Fig. 5a). Because of the presence of tufa, anticipated to have formed from high-pH, Ca-rich streamwaters, it was inferred that high-pH waters would have affected these samples at periods of high flow. The first was a conglomerate, ~15 cm in all dimensions, containing quartz pebbles and likely to have originated in the

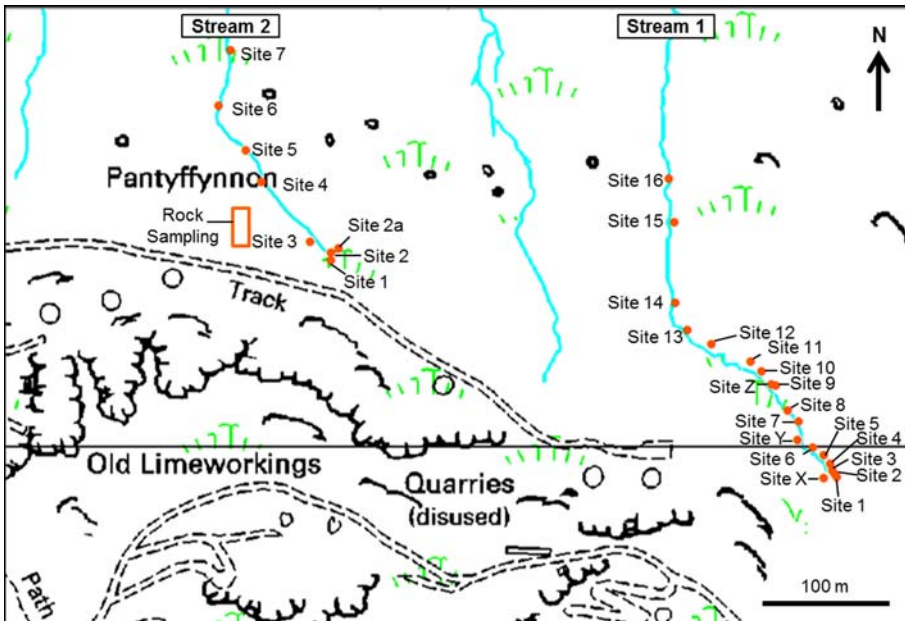


FIG. 1. Ordnance Survey map of Herbert's Quarry with sample locations overlain ©Crown Copyright/database right 2014. An Ordnance Survey/(Datacentre) supplied service.

Honeycombed Sandstone Member or the Twrch Sandstone Formation (British Geological Survey, 2014; Fig. 5a). A white/grey coating, limited in extent was noted on the conglomerate shown in section via SEM and EDX analysis to be up to 1 mm thick, porous and pure CaCO_3 . No dissolution features attributable to high-pH alteration were identifiable on the conglomerate because it would have been weathered before entering the stream.

The second sample was of slate $\sim 5 \text{ cm} \times 5 \text{ cm} \times 1 \text{ cm}$ (Fig. 6a). This was friable, indicative of weathering, and white material occurred on the surface that had been below the tufa surface. In section, a 100–250 μm porous layer ($\sim 30\%$ porosity) with pores up to 20 μm was visible on the surface that had been below the tufa (Fig. 6b and c). The increased porosity indicates dissolution and it was limited to the sub-tufa side of the sample, suggestive of dissolution by the high-pH streamwater, as suggested by similar studies (e.g. Gaucher and Blanc, 2006; Mäder *et al.*, 2006; Hodgkinson and Hughes, 1999; Brancy *et al.*, 1993; Savage *et al.*, 1992; Ramirez, 2005). However, some weathering prior to the slate entering the stream cannot be precluded. It was noted that locally the higher porosity layer was coated with a blocky material up to 30 μm thick which also filled some

pores (Fig. 6b and c). EDX analysis identified this as CaCO_3 . Material was also identified within cleavage planes as layers up to 20 μm thick and sub-rounded particles up to 100 μm , also identified as CaCO_3 via EDX analysis (Fig. 6d). This CaCO_3 is attributed to precipitation from high-pH Ca-rich, streamwaters nucleating on slate surfaces/voids/pores.

Discussion

Hyperalkaline zones were identified in two streams at Herbert's Quarry. However, pH and Ca concentration fell rapidly downstream, attributed to CaCO_3 precipitation removing Ca from solution and consuming OH^- , thereby lowering the pH. This was corroborated by the presence of CaCO_3 particles/surface coatings in both streams. CaCO_3 precipitation also sequesters CO_2 but in both streams CO_3 concentration increased with decreasing pH. This is attributed to the equilibration of lower pH streamwaters with atmospheric CO_2 where lower Ca concentration minimized CaCO_3 precipitation. As pH decreased the Mg concentration in solution also increased while Al concentration decreased, thought to be to the result of the change in solubility of these species with pH. For example, the precipitation of brucite (MgOH_2) above pH 10 (Pokrovsky and

TABLE 2. Stream 1 and stream 2 fluid chemistry, pH, redox, TDS and temperature measurements (to 3 significant figures; 2 standard deviations error shown).

Sample site	pH	ORP (mv)	Temp (°C)	Conductivity (µs/cm)	TDS (ppm)	Ca	Si	Na	K	Mg	Al	Fe	Sr	Sulfate	Nitrate	Chloride	Carbonate	
						mg l ⁻¹	mg l ⁻¹	mg l ⁻¹	mg l ⁻¹	µg l ⁻¹	µg l ⁻¹	µg l ⁻¹	µg l ⁻¹	mg l ⁻¹	mg l ⁻¹	mg l ⁻¹	mg l ⁻¹	
Stream 1																		
Site 1	11.8	9	15.6	1540	1078	147 ± 3.16	4.84 ± 2.58	4.49 ± 0.02	7.93 ± 0.09	36.7 ± 3.90	664 ± 11.84	19.3 ± 2.09	176 ± 0.73	13.3	2.97	30.1	n.a.	
Site 2	11.8	107	16.8	1590	1461.5	152 ± 0.67	4.13 ± 0.08	4.03 ± 0.03	3.50 ± 0.01	35.5 ± 0.25	655 ± 7.36	9.00 ± 0.38	172 ± 1.58	12.1	2.53	7.66	2.51	
Site 3	11.7	65	22.2	1300	770.75	132	4.43	3.69	2.03	37.4	699	19.3	169	12.6	2.15	5.37	26.9	
Site 4	8.51	208	21.9	115	28.855													
Site X	8.40	193	15.5	211	133.15	47.3	3.08	3.04	0.59	941	308	7.86	84.4	4.93	1.82	4.99	134	
Site 5	10.7	227	15.8	344	199.4	21.4 ± 0.68	5.16 ± 2.82	3.81 ± 0.08	1.59 ± 0.01	538 ± 2.25	390 ± 4.37	11.5 ± 0.38	104 ± 0.61	9.53	2.29	5.34	31.4	
Site 6	8.72	209	18.9	198	120.2													
Site Y	11.3	95	17.6	724	432.25													
Site 7	9.68	138	16.3	173	99.2	38.7	7.84	3.92	1.60	566	209	11.4	86.6	7.99	1.66	4.87	95.0	
Site 8	11.2	103	19.9	439	259.65													
Site 9	9.19	133	20.4	189	106.8													
Site Z	11.7	63	16.0	1220	741.8													
Site 10	11.4	63	19.7	579	339.15	69.5 ± 4.67	8.66 ± 0.77	3.47 ± 0.14	1.11 ± 0.01	174 ± 7.55	348 ± 7.43	41.2 ± 1.37	106 ± 2.93	11.2	2.28	5.02	71.2	
Site 11	10.7	83	20.7	223	127.1													
Site 12	9.99	105	20.5	151	85.345													
Site 13	9.56	111	19.3	157	89.35													
Site 14	9.31	114	20.3	162	92													
Site 15	8.29	129	18.0	199	113.4	42.2	6.59	3.85	1.41	606	169	28.2	81.2	7.10	0.65	4.86	123	
Site 16	8.21	134	16.4	196	112.55													

(continued)

TABLE 2. (contd.)

Sample site	pH	ORP (mv)	Temp (°C)	Conductivity (µs/cm)	TDS (ppm)	Ca	Si	Na	K	Mg	Al	Fe	Sr	Sulfate	Nitrate	Chloride	Carbonate	
						mg l ⁻¹	mg l ⁻¹	mg l ⁻¹	mg l ⁻¹	µg l ⁻¹	µg l ⁻¹	µg l ⁻¹	mg l ⁻¹	mg l ⁻¹	mg l ⁻¹	mg l ⁻¹	mg l ⁻¹	
Stream 2																		
Site 1	7.94	286	20.0	198	108.75	32.3 ± 0.57	6.28 ± 0.09	3.76 ± 0.04	3.87 ± 0.12	1120 ± 23.67	204 ± 6.89	34.7 ± 18.67	73.9 ± 0.57	9.26	0.10	8.63	116	
Site 2	11.0	160	23.2	391	238.7	206 ± 2.77	6.23 ± 0.02	3.84 ± 0.04	2.03 ± 0.00	51.0 ± 1.53	462 ± 7.34	13.9 ± 0.24	151 ± 2.23	13.5	0.76	5.25	26.0	
Site 2a	12.0	85	23.9	2210	81.105	268	5.79	3.61 ± 0.05	1.75 ± 0.01	49.6 ± 1.53	181 ± 6.35	12.3 ± 1.07	148 ± 3.17	20.8	1.03	5.02	22.0	
Site 3	9.61	163	23.0	143	1401.5	21.9	5.82	5.49	3.80	960	228	11.1	62.0	9.49	0.51	5.72	61.0	
Site 4	8.39	154	19.8	196	112.8	42.0	5.68	3.44	0.86	1135	124	9.38	63.5	4.46	0.72	5.58	122	
Site 5	8.15	274	20.4	188	108.05													
Site 6	8.45	260	20.9	175	100													
Site 7	8.49	211	20.3	181	103.55													

Phosphate was below detection limits in all samples. Dissolved oxygen concentrations were measured at between 5 and 18 ppm at all sites. Cr, Cu, Ni, Pb and Mo all below 10 ppb. Zn and Ba below 75 ppb.

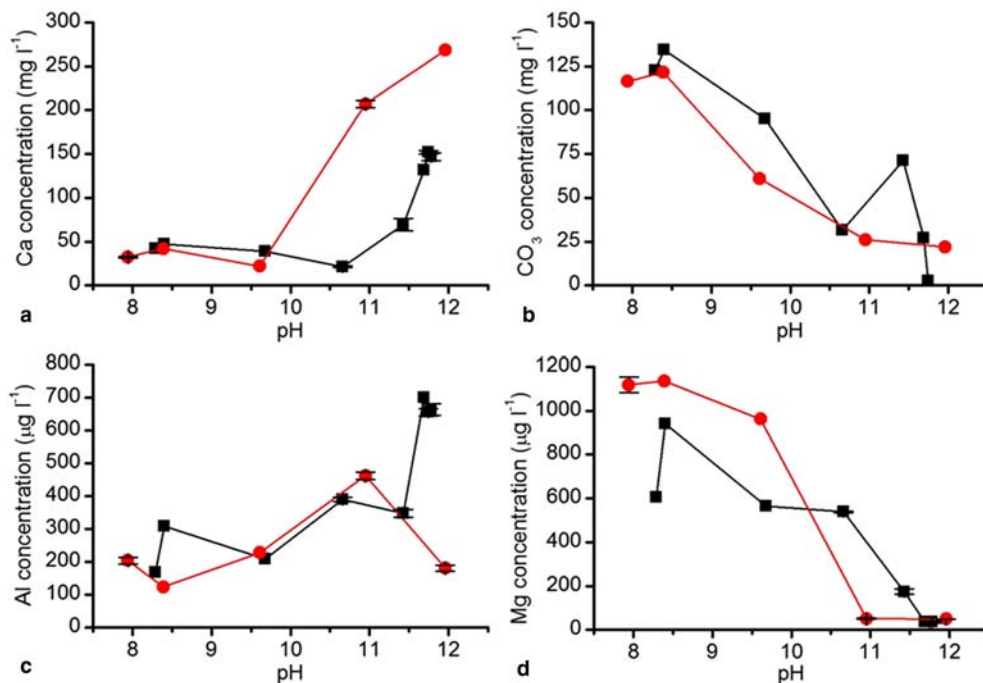


FIG. 2. Concentration of (a) Ca, (b) CO₃, (c) Al and (d) Mg in solution vs. pH in stream 1 (black) and stream 2 (red).

Schott, 2004) would limit Mg concentration in the highest pH zones, whereas gibbsite (Al(OH)₃) solubility increases with increasing pH above pH 6 (May *et al.*, 1979).

At Herbert's Quarry silicate rocks do not crop out in the vicinity of the streams and the low stream-water Si concentration indicated the absence of a significant Si source. Investigation of detrital silicate rocks cemented within stream bed tufa deposits indicated little dissolution directly attributable to reaction in high-pH fluid and no precipitation of secondary C–S–H phases as found in other studies of rock reaction in high-pH solutions (e.g. Gaucher and Blanc, 2006; Mäder *et al.*, 2006; Savage and Rochelle, 1993; Braney *et al.*, 1993; Ramirez, 2005) but provided further evidence of CaCO₃ precipitation.

Ca concentrations of 80–800 mg l⁻¹ and pH of 10.5–12.2 are representative of cement leachates in equilibrium with Ca(OH)₂/C–S–H phases (Atkinson, 1985). Therefore the Herbert's Quarry streamwaters of pH > 10.5 and Ca concentration up to 268 mg l⁻¹ may be analogous to cement leachates predicted to form at a GDF (Atkinson, 1985). Also, as the high-pH streamwaters are likely to have existed at Herbert's Quarry for ~200 years

(Calch, 2014) the site could extend laboratory studies. However, the prevalence of limestone and only minor occurrence of silicate rocks limits the applicability of the site for currently considered GDF host rocks. The restricted extent of high-pH solutions and resultant extensive precipitation of CaCO₃ also limit the potential for high-pH reactions as do the oxidizing streamwater conditions (GDF conditions are expected to be reducing) and temperatures 15–25°C below those anticipated at a GDF (NDA, 2010a and NDA, 2010b).

Summary and conclusions

In summary, high-pH, Ca-rich streamwaters were identified at Herbert's Quarry. Analysis of sediment and rock samples indicated extensive CaCO₃ mineralization as a result of the reaction of Ca²⁺ with dissolved CO₂. This precipitation of CaCO₃ reduces the lateral extent of the high-pH streamwaters and so limits the potential for rock alteration at high pH. The occurrence of silicate rocks was rare at the site. No formation of secondary silicate phases was observed in contrast to previous silicate rock alteration studies. Dissolution of silicate minerals was observed at the margins of slate clasts

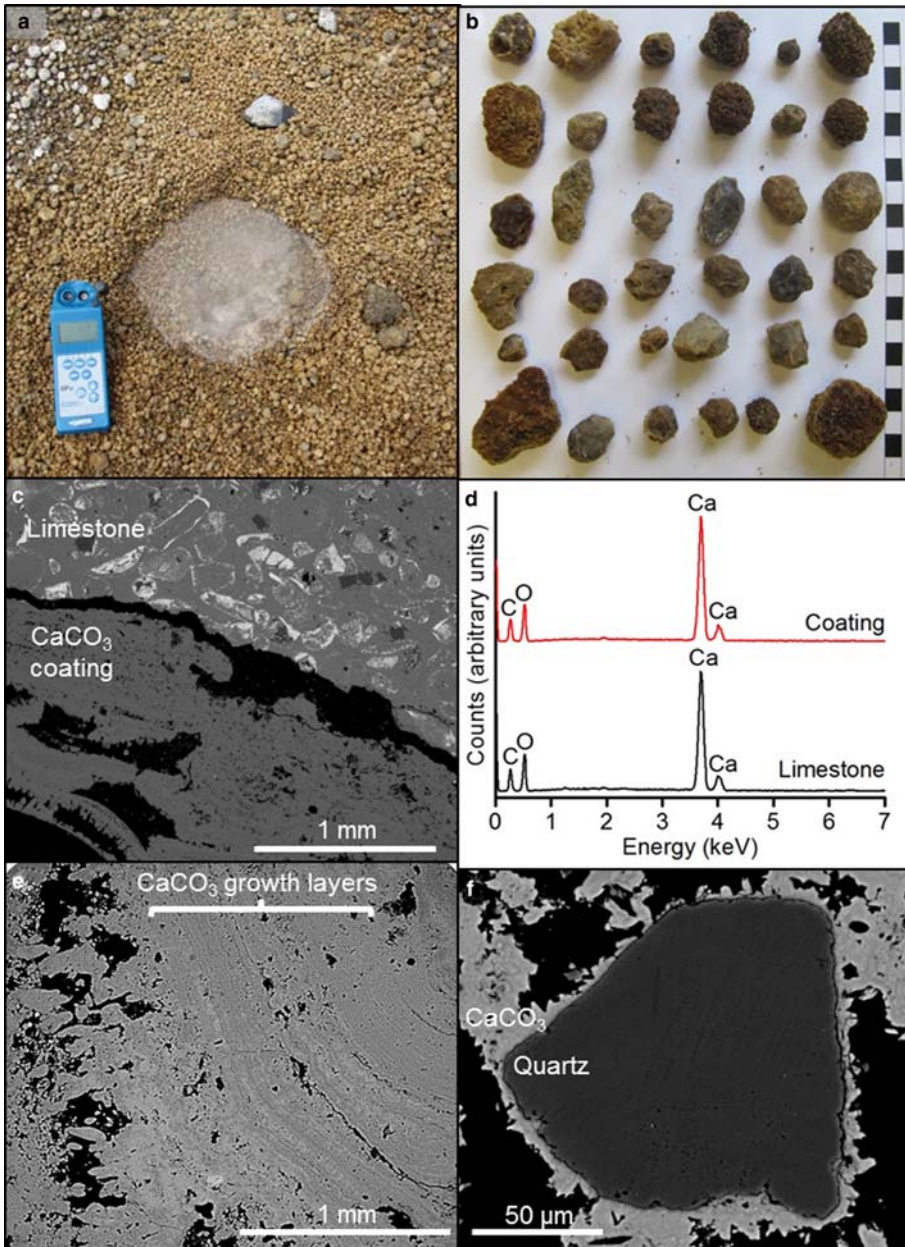


FIG. 3. (a) Stream bed (stream 1, site 1) comprised of CaCO₃ 'pebbles'; (b) CaCO₃ 'pebbles' (scale shown in cm); (c) electron micrograph through a CaCO₃ 'pebble'; (d) EDX spectra of a limestone fragment with CaCO₃ coating shown in c; (e) electron micrograph of growth layers in CaCO₃ coating and (f) electron micrograph of quartz fragment entrained in CaCO₃ coating.

in contact with high-pH leachate streams. This resulted in enhanced porosity within the matrix of the clasts. Some of this alteration may be partly caused by weathering of these rocks prior to high-

pH reaction. However, this alteration may be analogous to that expected from high-pH rock-water interaction in fractured silicate rocks, leading to enhanced matrix porosity in the fracture

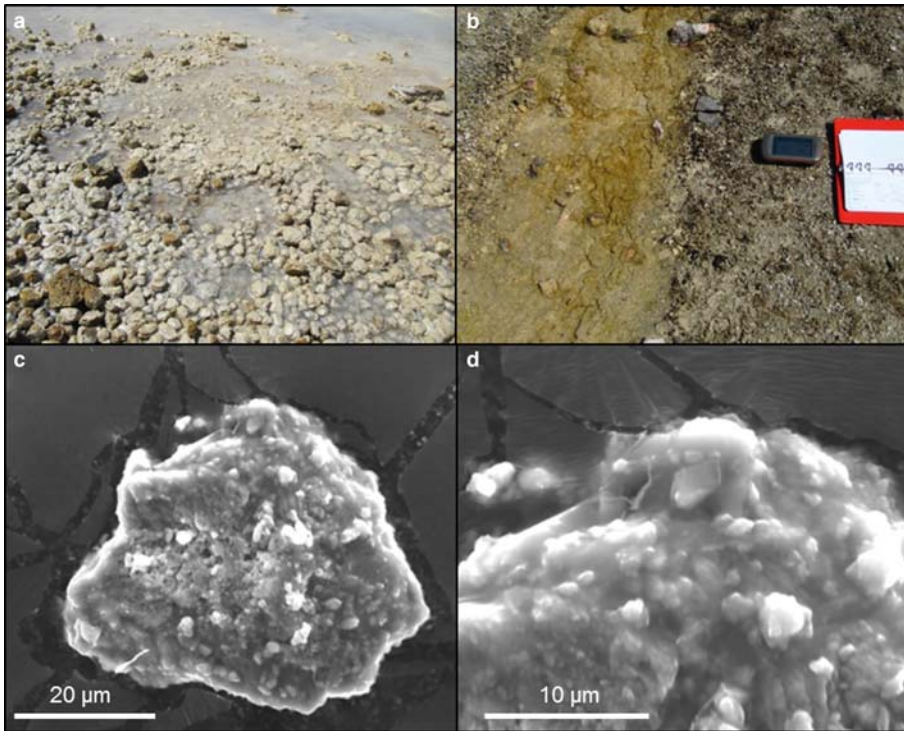


FIG. 4. Stream 2: (a) site 2 comprised of CaCO_3 'pebbles' coated in fine grained white material; (b) bed of site 3 cemented by tufa deposit; (c) electron micrograph of CaCO_3 particle from streamwater suspension site 2; (d) higher magnification electron micrograph of c.

wallrock. This type of alteration may be important in regard to understanding rock–matrix diffusion processes influencing radionuclide migration within the CDZ.

The presence of Ca-rich, high-pH streamwaters at Herbert's Quarry is balanced by the the

widespread CaCO_3 precipitation through interaction with atmospheric CO_2 , paucity of silicate rock, pervasive oxic conditions and low water temperature, which limits the site as an analogue for a cement leachate plume in the CDZ around a cementitious GDF. However, the site may hold

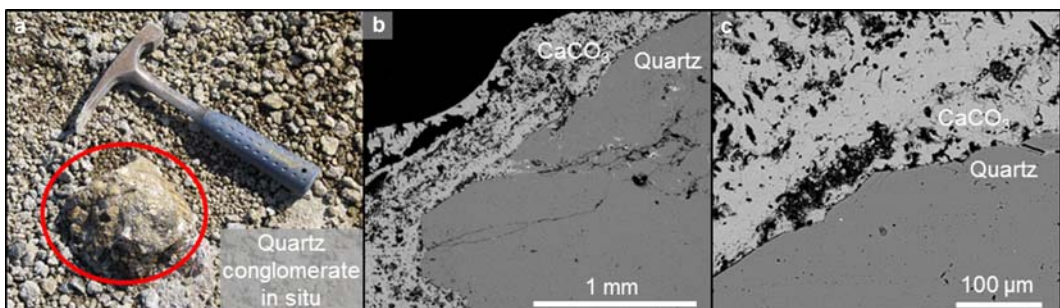


FIG. 5. (a) Quartz conglomerate cemented in tufa in dry stream bed *in situ*; (b) electron micrograph of CaCO_3 formed around quartz in conglomerate; (c) higher magnification electron micrograph of CaCO_3 formed around quartz in conglomerate.

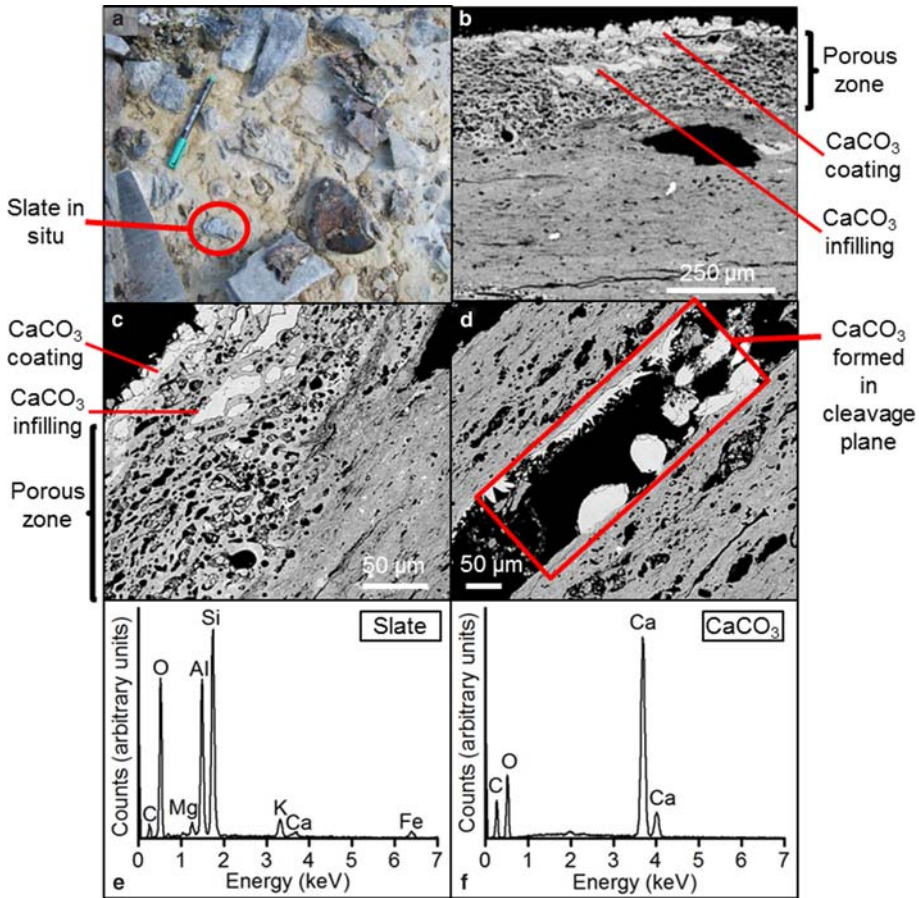


FIG. 6. Slate cemented in tufa (*a*) *in situ*; (*b*) in section via SEM exhibiting increased porosity at surface with CaCO_3 infilling; (*c*) higher magnification electron micrograph of increased porosity with CaCO_3 infilling; (*d*) electron micrograph of CaCO_3 in slate cleavage plane; (*e*) EDX spectrum of slate and (*f*) EDX spectrum of CaCO_3 .

interest for microbial studies at high pH as alkaliphilic bacteria may be present which are starting to be recognized as important components for deep disposal (Rizoulis *et al.*, 2012; Bassil *et al.*, 2014; Williamson *et al.*, 2013) and further, targeted studies may be warranted.

Acknowledgements

This study was funded by the Engineering and Physical Sciences Research Council (EPSRC) through the Nuclear Fission Research, Science and Technology (Nuclear FiRST) Doctoral Training Centre (DTC) (grant number: EP/G037140/1) and has been supported by the Natural Environment Research Council (NERC) through the Biogeochemical Gradients and RADionuclide

transport BIGRAD project (grant numbers: NE/H006494/1, NE/H006494/2, NE/H005927/1, NE/H007768/1, NE/H006540/1, NE/H005617/1). The authors thank Natural Resources Wales and the Brecon Beacons National Park Authority for permission to collect samples from the Mynydd Du Site of Special Scientific Interest (which includes Herbert's Quarry). AEM publishes with the permission of the Executive Director of the British Geological Survey (NERC).

References

- ANDRA (2012) *Low and Intermediate Level Short-lived Waste* [online]. Available at: <www.andra.fr/international/pages/en/menu21/waste-management/waste-classification/short-lived-low-and-intermediate-level-waste-1609.html> [accessed 19/01/2014].

- Andrews, J.E., Gare, S.G. and Dennis, P.F. (1997) Unusual isotopic phenomena in Welsh quarry water and carbonate crusts. *Terra Nova*, **9**, 67–70.
- Atkinson, A. (1985) *The Time Dependence of pH within a Repository for Radioactive Waste Disposal*. UKAEA, AERE-R 11777.
- Bassil, N.M., Bryan, N. and Lloyd, J.R. (2014). Microbial degradation of isosaccharinic acid at high pH. *The ISME Journal*. 1751-7362/14. 1–11.
- Berner, U.R. (1992) Evolution of pore water chemistry during degradation of cement in a radioactive waste repository environment. *Waste Management*, **12**, 201–219.
- Braney, M.C., Haworth, A., Jefferies, N.L. and Smith, A.C. (1993) A study of the effects of an alkaline plume from a cementitious repository on geological materials. *Journal of Contaminant Hydrology*, **13**, 379–402.
- British Geological Survey (2014) *BGS Lexicon – Named Rock Unit: Dowlais Limestone Formation* [online]. Available at <http://data.bgs.ac.uk/doc/Lexicon/NamedRockUnit/DWL.html> [accessed 07/6/2014]
- Calch (2014) *Discover the Lime Industry of the Black Mountains* [online]. Available at: <http://www.calch.org.uk/> [accessed 20/04/2014]
- Chermak, J.A. (1992) Low temperature experimental investigation of the effect of high pH NaOH solutions on the Opalinus shale, Switzerland. *Clays and Clay Minerals*, **40**, 650–658.
- Chermak, J.A. (1993) Low temperature experimental investigation of the effect of high pH KOH solutions on the Opalinus shale, Switzerland. *Clays and Clay Minerals*, **41**, 365–372.
- DEFRA (2008) *Managing Radioactive Waste Safely: A Framework for Implementing Geological Disposal*. Department of the Environment, Food and Rural Affairs, UK.
- Fernandez, R., Rodríguez, M., Vigil de la Villa, R. and Cuevas, J. (2010) Geochemical constraints on the stability of zeolites and C–S–H in the high pH reaction of bentonite. *Geochimica et Cosmochimica Acta*, **74**, 890–906.
- Gaucher, E. and Blanc, P. (2006) Cement/clay interactions – A review: experiments, natural analogues, and modeling. *Waste Management*, **26**, 776–788.
- Hodgkinson, E.S. and Hughes, C.R. (1999) The mineralogy and geochemistry of cement/rock reactions: high-resolution studies of experimental and analogue materials. *Geological Society of London, Special Publications*, **157**, 195–211.
- IAEA (1989) *Natural Analogues in Performance Assessments for the Disposal of Long Lived Radioactive Wastes*. Technical Report Series, 304.
- Lagerblad, B. and Trägårdh, J. (1994) *Conceptual Model for Concrete Long Time Degradation in a Deep Nuclear Waste Repository*. SKB Technical Report 95-21.
- Mäder, U., Fierz, T., Frieg, B., Eikenberg, J., Ruthi, M., Albinsson, Y., Mori, A., Ekberg, S. and Stille, P. (2006) Interaction of hyperalkaline fluid with fractured rock: Field and laboratory experiments of the HPF project (Grimsel Test Site, Switzerland). *Journal of Geochemical Exploration*, **90**, 68–94.
- McKinley, I.G. and Alexander, W.R. (1992) A review of the use of natural analogues to test performance assessment models of a cementitious near field. *Waste Management*, **12**, 253–259.
- May, H.M., Helmke, P.A. and Jackson, M.L. (1979) Gibbsite solubility and thermodynamic properties of hydroxy-aluminium ions in aqueous solution at 25°C. *Geochimica et Cosmochimica Acta*, **43**, 861–868.
- Miller, W., Alexander, R., Chapman, N., McKinley, I. and Smellie, J. (2000) *Geological Disposal of Radioactive Wastes & Natural Analogues*. Elsevier Science Ltd., Oxford, UK.
- Milodowski, A.E., Hysslop, E.K., Pearce, J.M., Wetton, P. D., Kemp, S.J., Longworth, G., Hodgkinson, E.S. and Hughes, C.R. (1998) Mineralogy, petrology and geochemistry. In: *Maqarin Natural Analogue Study: Phase III* (J.A.T. Smellie, editor). TR 98-04. Swedish Nuclear Fuel and Waste Management Company, Stockholm.
- Moyce, E.B.A., Rochelle, C., Morris, K., Milodowski, A.E., Chen, X., Thornton, S., Small, J.S. and Shaw, S. (2014) Rock alteration in alkaline cement waters over 15 years and its relevance to the geological disposal of nuclear waste. *Applied Geochemistry*, **50**, 91–105.
- NAGRA (2014) *Geological Repository for Low- and Intermediate-level Waste* [online]. Available at: <www.nagra.ch/en/tlsmae.htm> [accessed 19/01/2014].
- NDA (2010a) *Geological Disposal: Generic Disposal System Technical Specification*. NDA/RWMD/044.
- NDA (2010b) *Geological Disposal: Geosphere Status Report*. NDA/RWMD/035.
- Nuclear Waste Management Organisation (2010) *DGR Key Features* [online]. Available at: <www.nwmo.ca/dgr_keyfeatures> [accessed 19/01/2014].
- OECD-NEA (2008) *Moving Forward with Geological Disposal of Radioactive Waste: a Collective Statement by the NEA Radioactive Waste Management Committee (RWMC)*. NEA no. 6433.
- Pokrovsky, O.S. and Schott, J. (2004) Experimental study of brucite and precipitation in aqueous solutions: surface speciation and chemical affinity control. *Geochimica et Cosmochimica Acta*, **68**, 31–45.
- Ramirez, S. (2005) Alteration of the Callovo-Oxfordian clay from Meuse-Haute Marne underground laboratory (France) by alkaline solution. I. A XRD and CEC study. *Applied Geochemistry*, **20**, 89–99.
- Rizoulis, A., Steele, H., Morris, K. and Lloyd, J. (2012) The potential impact of anaerobic microbial metabolism during the geological disposal of intermediate-level waste. *Mineralogical Magazine*. **76**, 3261–3270.

- Savage, D. (2010) *A Review of PA-relevant Data from Analogues of Alkaline Alteration*. Wettingen: NAGRA.
- Savage, D. (2011). A review of analogues of alkaline alteration with regard to long-term barrier performance. *Mineralogical Magazine*, **75**, 2401–2418.
- Savage, D. and Rochelle, C. (1993) Modelling reactions between cement pore fluids and rock: Implications for porosity change. *Journal of Contaminant Hydrology*, **13**, 365–378.
- Savage, D., Bateman, K., Hill, P., Hughes, C., Milowdowski, A., Pearce, J., Rae, M. and Rochelle, C. (1992) Rate and mechanism of the reaction of silicates with cement pore fluids. *Applied Clay Science*, **7**, 33–45.
- Surdam, R.C. (1977) Zeolites in closed hydrologic systems. Pp. 65–92 in: *Mineralogy and Geology of Natural Zeolites* (F.A. Mumpton, editor). Mineralogical Society of America, Short Course Notes, 5.
- Taylor, M.W. and Surdam, R.C. (1981) Zeolite reactions in the tuffaceous sediments at Teels Marsh, Nevada. *Clays and Clay Minerals*, **90**, 341–352.
- Techer, I., Bartier, D., Boulvais, Ph., Tinseau, E., Suchorski, K., Cabrera, J. and Dauzeres, A. (2012) Tracing interaction between natural argillites and hyper-alkaline fluids from engineered cement paste and concrete: Chemical and isotopic monitoring of a 15-years old deep-disposal analogue. *Applied Geochemistry*, **27**, 1384–1402.
- Tinseau, E., Bartier, D., Hassouta, L., Devol-Brown, I. and Stammose, D. (2006) Mineralogical characterization of the Tournemire Argillite after in situ interaction with concretes. *Waste Management*, **26**, 789–800.
- Williamson, A.J., Morris, K., Shaw, S., Byrne, J.M., Boothman, C. and Lloyd, J.R. (2013) Microbial reduction of Fe(III) under alkaline conditions relevant to geological disposal. *Applied and Environmental Microbiology*, **79**, 3320–3326.