

CAMBRIDGE

Marine Microbiology

B. AUSTIN

This concise textbook, suitable for undergraduate and postgraduate students in both microbiology and marine biology, provides a sound introduction to the subject of marine microbiology whilst emphasising new and exciting developments in the field. The book covers basic subject matter, providing a practical guide to microbiological techniques and methods, and a sound introduction to fundamental topics, such as the habitats, ecology and taxonomy of marine micro-organisms. In addition, the text covers recent findings in the fields of biotechnology, fish and shellfish pathology and deep sea microbiology.

222 pp. 1988 0 521 32252 9 Hc £27.50 net
0 521 31130 6 Pb £10.95 net

The Provident Sea

D. H. CUSHING

Through the use of original scientific material, Dr Cushing describes the history of fish stock management, including whales and seals, from the origins of fisheries and whaling science through to more recent problems arising from over-exploitation. The text describes the development of science and institutions in fisheries, whaling and sealing and the consequent appearance of increasingly sophisticated and efficient gathering methods. The author also discusses the conflict which arose through the advent of increasingly industrialised methods of capture and the 'Law of the Sea' conference set up in an attempt to resolve this problem.

336 pp. 1988 0 521 25727 1 £37.50 net

Cambridge University Press

The Edinburgh Building, Shaftesbury Road, Cambridge CB2 2RU.

Cover: The photograph on the outside of the cover was taken by David Nicholson at Pedney Beach, Cornwall.

Inside front cover: The Plymouth Laboratory by night (photograph by David Nicholson)

Inside back cover: Scanning electron micrographs of coccolithophores: scale x10,000 (photographs by Derek Harbour). Upper: *Gephyrocapsa muelleriae* Breheret. Lower: *Emiliana huxleyi* (Lohmann) Hay & Mohler.

© *The Marine Biological Association of the United Kingdom* 1989

CAMBRIDGE UNIVERSITY PRESS

THE PITT BUILDING, TRUMPINGTON STREET, CAMBRIDGE CB2 1RP

32 EAST 57TH STREET, NEW YORK, NY 10022, USA

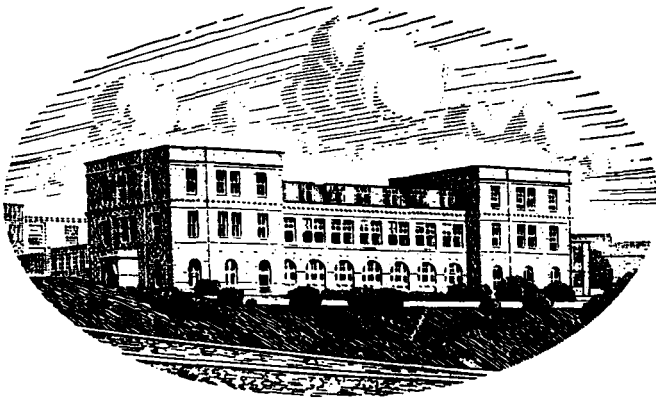
10 STAMFORD ROAD, OAKLEIGH, MELBOURNE 3166, AUSTRALIA

Printed in Great Britain by the University Press, Cambridge

**JOURNAL OF THE
MARINE BIOLOGICAL ASSOCIATION
OF THE UNITED KINGDOM**

The Council of the Marine Biological Association wish it to be understood that they do not accept responsibility for the accuracy of statements published in this Journal, excepting when those statements are contained in an official report of the Council.

**JOURNAL OF THE
MARINE BIOLOGICAL
ASSOCIATION
OF THE UNITED KINGDOM**



THE PLYMOUTH LABORATORY

VOLUME 68

1988

**CAMBRIDGE UNIVERSITY PRESS
CAMBRIDGE
LONDON NEW YORK NEW ROCHELLE
MELBOURNE SYDNEY**

PUBLISHED BY
THE PRESS SYNDICATE OF THE UNIVERSITY OF CAMBRIDGE

The Pitt Building, Trumpington Street, Cambridge, CB2 1RP
32 East 57th Street, New York, NY 10022, USA
10 Stamford Road, Oakleigh, Melbourne 3166 Australia

© Copyright Marine Biological Association of the UK 1988
Printed in Great Britain at the University Press, Cambridge

CONTENTS OF VOLUME 68

Number 1, pp. 1-217, 5 February 1988

Number 2, pp. 219-363, 4 May 1988

Number 3, pp. 365-548, 1 August 1988

Number 4, pp. 549-797, 7 November 1988

	Page
Report of the Council for 1987-88	751
Income and Expenditure Account and Balance Sheet	791
Alexander, C.G.	
The paragnaths of some intertidal crustaceans	581
Al-Kadhomiy, N.K. and Hughes, G.M.	
Histological study of different regions of the skin and gills in the mudskipper <i>Boleophthalmus boddarti</i> with respect to their respiratory function	413
See also Hughes and Al-Kadhomiy	489
Ansell, A.D., Robb, L. and Powell, H.T.	
Algal-induced dislodgement as a cause of bivalve mortality on some Scottish beaches	219
Barnes, R.S.K.	
On reproductive strategies in adjacent lagoonal and intertidal-marine populations of the marine gastropod <i>Hydrobia ulvae</i>	365
Basford, D. and Eleftheriou, A.	
The benthic environment of the North Sea (56° to 61°N)	125
Beard, J.B., see Davenport and Beard	15
Bellan-Santini, D., see Dauvin and Bellan-Santini	659
Bhaud, M.	
Change in setal pattern during early development of <i>Eupolyornia nebulosa</i> (Polychaeta: Terebellidae) grown in simulated natural conditions	677
Boalch, G.T., see Southward, Boalch and Maddock	423
Bryan, G.W., Gibbs, P.E. and Burt, G.R.	
A comparison of the effectiveness of tri-n-butyltin chloride and five other organotin compounds in promoting the development of imposex in the dog-whelk, <i>Nucella lapillus</i>	733
Burnell, G.M., see Gosling and Burnell	251
Burt, G.R.	
See Bryan, Gibbs and Burt	733
See Gibbs, Pascoe and Burt	715
Caceci, T., Neck, K.F., Lewis, D.H. and Sis, R.F.	
Ultrastructure of the hepatopancreas of the Pacific white shrimp, <i>Penaeus vannamei</i> (Crustacea: Decapoda)	323
Christensen, T.	
Salinity preference of twenty species of <i>Vaucheria</i> (Tribophyceae)	531
Claridge, P.N., see Potter, Gardner and Claridge	295
Dando, P.R., see Southward and Dando	627

Dauvin, J.-C. and Bellan-Santini, D. Illustrated key to <i>Ampelisca</i> species from the north-eastern Atlantic	659
Davenport, J. and Beard, J.B. Observations on the temperature and salinity relations of <i>Lasaea rubra</i>	15
Davies, A.G. and Smith, M.A. Alkaline phosphatase activity in the western English Channel	239
De La Serna, J.M., <i>see</i> Muñoz-Chápuli, Rey Salgado and De La Serna	315
Diop, M., <i>see</i> Guillou and Diop	41
Edwards, J.M. <i>See</i> Potts, Keenleyside and Edwards	277
<i>See</i> Potts, Robinson and Edwards	287
Eleftheriou, A., <i>see</i> Basford and Eleftheriou	125
Evans, F., <i>see</i> Roff, Middlebrook and Evans	143
Fernandez Castro, N. and Le Pennec, M. Modalities of brooding and morphogenesis of larvae in <i>Ostrea puelchana</i> (D'Orbigny) under experimental rearing	399
French, D., <i>see</i> Kruuk, Nolet and French	601
Gardner, D.C., <i>see</i> Potter, Gardner and Claridge	295
Gibbs, P.E., Pascoe, P.L. and Burt, G.R. Sex change in the female dog-whelk, <i>Nucella lapillus</i> , induced by tributyltin from antifouling paints	715
<i>See also</i> Bryan, Gibbs and Burt	733
Gosling, E.M. and Burnell, G.M. Evidence for selective mortality in <i>Chlamys varia</i> (L.) transplant experiments	251
Guillou, M. and Diop, M. Ecology and demography of a population of <i>Anseropoda placenta</i> (Echinodermata: Asteroidea) in the Bay of Brest, Brittany	41
Harbison, G.R., <i>see</i> Larson, Madin and Harbison	689
Harris, R.P., <i>see</i> Pingree and Harris	519
Heffernan, P. Ultrastructural and histochemical studies of the digestive system of <i>Pholoe minuta</i> (Polychaeta: Sigalionidae)	447
Heffernan, P. and Keegan, B.F. The larval development of <i>Pholoe minuta</i> (Polychaeta: Sigalionidae) in Galway Bay, Ireland	339
Holmes, J.M.C. and O'Connor, J.P. A portable light-trap for collecting marine crustaceans	235
Hughes, G.M. and Al-Kadhomy, N.K. Changes in scaling of respiratory systems during the development of fishes	489
<i>See also</i> Al-Kadhomy and Hughes	413
Hughes, G.M. and Kikuchi, Y. Effects of temperature on the deformability of red blood cells of rainbow trout and ray	619

Hughes, R.G. Dispersal by benthic invertebrates: the <i>in situ</i> swimming behaviour of the amphipod <i>Corophium volutator</i>	565
Jenkins, K.D., <i>see</i> Mason, Jenkins and Sullivan	61
Keegan, B.F., <i>see</i> Heffernan and Keegan	339
Keenleyside, M.H.A., <i>see</i> Potts, Keenleyside and Edwards	277
Kelley, D.F. Age determination in bass and assessment of growth and year-class strength	179
Kikuchi, Y., <i>see</i> Hughes and Kikuchi	619
Kruuk, H., Nolet, B. and French, D. Fluctuations in numbers and activity of inshore demersal fishes in Shetland	601
Larson, R.J., Madin, L.P. and Harbison, G.R. <i>In situ</i> observations of deepwater medusae in the genus of <i>Deepstaria</i> , with a description of <i>D. reticulum</i> , sp. nov.	689
Le Pennec, M., <i>see</i> Fernandez Castro and Le Pennec	399
Lewis, D.H., <i>see</i> Caceci <i>et al.</i>	323
Lewis, J. Cysts and sediments: <i>Gonyaulax polyedra</i> (<i>Lingulodinium machaerophorum</i>) in Loch Creran	701
Lynn, D.H. and Montagnes, D.J.S. Taxonomic descriptions of some conspicuous species of strobilidiine ciliates (Ciliophora: Choreotrichida) from the Isles of Shoals, Gulf of Maine	639
Lynn, D.H., Montagnes, D.J.S. and Small, E.B. Taxonomic descriptions of some conspicuous species in the family Strombidiidae (Ciliophora: Oligotrichida) from the Isles of Shoals, Gulf of Maine	259
McCleave, J.D., <i>see</i> Wippelhauser and McCleave	81
MacOscar, K.C., <i>see</i> Parker, Rosell and MacOscar	555
Madin, L.P., <i>see</i> Larson, Madin and Harbison	689
Maddock, L., <i>see</i> Southward, Boalch and Maddock	423
Mason, A.Z., Jenkins, K.D. and Sullivan, P.A. Mechanisms of trace metal accumulation in the polychaete <i>Neanthes arenaceodentata</i>	61
Middlebrook, K., <i>see</i> Roff, Middlebrook and Evans	143
Montagnes, D.J.S. <i>See</i> Lynn and Montagnes	639
<i>See</i> Lynn, Montagnes and Small	259
Muñoz-Chápuli, R., Rey Salgado, J.C. and De La Serna, J.M. Biogeography of <i>Isistius brasiliensis</i> in the north-eastern Atlantic, inferred from crater wounds on swordfish (<i>Xiphias gladius</i>)	315
Mustaquim, J. Isozyme variation in three <i>Nereis</i> species from five localities in the U.K.	549
Neck, K.F., <i>see</i> Caceci <i>et al.</i>	323
Nicolaidou, A. Notes on the behaviour of <i>Pectinaria koreni</i>	55

Nolet, B., <i>see</i> Kruuk, Nolet and French	601
Nugegoda, D. and Rainbow, P.S. Effect of a chelating agent (EDTA) on zinc uptake and regulation by <i>Palaemon elegans</i> (Crustacea: Decapoda)	25
O'Connor, J.P., <i>see</i> Holmes and O'Connor	235
Parker, J.G., Rosell, R.S. and MacOscar, K.C. The phytoplankton production cycle in Belfast Lough	555
Pascoe, P.L., <i>see</i> Gibbs, Pascoe and Burt	715
Pawlik, J.R. Larval settlement and metamorphosis of gregarious sabellariid polychaetes: <i>Sabellaria alveolata</i> compared with <i>Phragmatopoma californica</i>	101
Pingree, R.D. and Harris, R.P. An <i>in vivo</i> fluorescence response in the Bay of Biscay in June	519
Potter, I.C., Gardner, D.C. and Claridge, P.N. Age composition, growth, movements, meristics and parasites of the whiting, <i>Merlangius merlangus</i> , in the Severn Estuary and Bristol Channel	295
Potts, G.W., Keenleyside, M.H.A. and Edwards, J.M. The effect of silt on the parental behaviour of the sea stickleback, <i>Spinachia</i> <i>spinachia</i>	277
Potts, G.W., Robinson, S.G. and Edwards, J.M. An underwater event recorder for use in behavioural research	287
Powell, H.T., <i>see</i> Ansell, Robb and Powell	219
Pugh, P.R. & Youngbluth, M.J. A new species of <i>Halistemma</i> (Siphonophora: Physonectae: Agalmidae) collected by submersible	1
Rainbow, P.S., <i>see</i> Nugegoda and Rainbow	25
Rangeley, R.W. and Thomas, M.L.H. Littoral stratification in growth form and fecundity of the rock barnacle, <i>Semibalanus</i> <i>balanoides</i>	591
Rey Salgado, J.C., <i>see</i> Muñoz-Chápuli Rey Salgado and De La Serna	315
Robb, L., <i>see</i> Ansell, Robb and Powell	219
Robinson, S.G., <i>see</i> Potts, Robinson and Edwards	287
Roff, J.C., Middlebrook, K. and Evans, F. Long-term variability in North Sea zooplankton off the Northumberland coast: productivity of small copepods and analysis of trophic interactions	143
Rosell, R.S., <i>see</i> Parker, Rosell and MacOscar	555
Scott, J.M. Effect of growth rate on the physiological rates of a chemostat-grown rotifer <i>Enicentrum</i> <i>linnhei</i>	165
Simkiss, K., <i>see</i> Watkins and Simkiss	93
Sis, R.F., <i>see</i> Caceci <i>et al.</i>	323
Small, E.B., <i>see</i> Lynn, Montagnes and Small	259

Smith, M.A., <i>see</i> Davies and Smith	239
Southward, A.J., Boalch, G.T. and Maddock, L. Fluctuations in the herring and pilchard fisheries of Devon and Cornwall linked to change in climate since the 16th century	423
Southward, A.J. and Dando, P.R. Distribution of Pogonophora in canyons of the Bay of Biscay: factors controlling abundance and depth range	627
Southward, A.J. and Southward, E.C. Disappearance of the warm-water hermit crab <i>Clibanarius erythropus</i> from south-west Britain	409
Southward, E.C. Development of the gut and segmentation of newly settled stages of <i>Ridgeia</i> (Vestimentifera): implications for relationship between Vestimentifera and Pogonophora <i>See also</i> Southward and Southward	465 409
Stock, J.H. Lamippidae (Copepoda: Siphonostomatoida) parasitic in <i>Alcyonium</i>	351
Sullivan, P.A., <i>see</i> Mason, Jenkins and Sullivan	61
Thomas, M.L.H., <i>see</i> Rangeley and Thomas	591
Thompson, T.E. Acidic allomones in marine organisms	499
Waite, M.E. and Walker, G. The haemocytes of balanomorph barnacles	391
Walker, G. Observations on the larval development of <i>Sacculina carcini</i> (Crustacea: Cirripedia: Rhizocephala) <i>See also</i> Waite and Walker	377 391
Watkins, B. and Simkiss, K. The effect of oscillating temperatures on the metal ion metabolism of <i>Mytilus edulis</i>	93
Wippelhauser, G.S. and McCleave, J.D. Rhythmic activity of migrating juvenile American eels <i>Anguilla rostrata</i>	81
Youngbluth, M.J., <i>see</i> Pugh and Youngbluth	1

CORRIGENDA

Page 347, Table 1, line 2, column 4, for Blake (1975) read Lacalli (1981).

Page 348, line 7, for Blake (1975) read Lacalli (1981).

Index to Volume 67, p. ix

For: Ryan, T.H.

See Bone *et al.* 545

See Roden *et al.* 359

Read: Ryan, K.P. *See* Bone *et al.* 545

Ryan, T.H. *See* Roden *et al.* 359

SUBJECT INDEX

Behaviour

- Diurnal activity of burrowing polychaetes, 55-59
- Parental behaviour of the sea stickleback, 277-285
- Rhythmic swimming activity of young eels, 81-91
- Swimming behaviour of *Corophium volutator*, 565-579

Biochemistry

- Acid secretion in marine organisms, 499-517
- Alkaline phosphatase activity in Channel waters, 239-250

Breeding, Rearing and Fecundity

- Experimental rearing of oysters, 399-407
- Morphology of rock barnacles related to habitat, 591-599
- Reproduction of *Hydrobia ulvae*, 365-375

Comparative Anatomy

- Allometric relationships between respiratory area and body mass in fishes, 489-498
- Morphology of rock barnacles related to habitat, 591-599
- Paragnaths of intertidal crustaceans, 581-590
- Possible phylogenetic relationship among tube-worms, Vestimentifera and Pogonophora, 465-487
- Two deepwater medusae, 689-699

Development, Growth and Maturation

- Development of young vestimentiferans, 465-487
- Growth and age determination of bass, 179-214
- Larval development in cultured oysters, 399-407
- Larval development of *Sacculina*, 377-390
- Polychaete larvae in Galway Bay, 339-350
- Setal patterns in young terebellids, 677-687
- Settlement and metamorphosis in sabellariid polychaetes, 101-124

Ecology and Distribution

- Bivalve dislodgement caused by algal growth, 219-233
- Copepods in the North Sea, 143-164
- Dinoflagellate cysts in Loch Creran, 701-714
- North Sea benthic environment, 125-141
- Pogonophora in Biscay canyons, 627-638
- Shark distribution inferred from bite wounds on swordfish, 315-321
- Starfish in the Bay of Brest, 41-54

Genetics

- Isozymes of *Nereis*, 549-553
- Mortality in transplanted *Chlamys*, 251-258

New Species

- Deepstaria reticulum* sp. nov., 691
- Enalcyonium confusum* n. sp., 358
- Halistemma transliratum* sp. nov., 1
- Leegaardiella ovalis* n. sp., 653
- Leegaardiella sol* n. gen., n. sp., 650
- Strobilidium epacrum* n. sp., 642
- Strobilidium multinucleatum* n. sp., 644
- Strobilidium sphaericum* n. sp., 646

Parasitology

- Copepod parasites of *Alcyonium*, 351-359
- Larval development of *Sacculina carcini*, 377-390
- Parasites of whiting in the Severn Estuary, 295-313

Phycology

- Alkaline phosphatase activity in Channel waters, 239-250
- Chlorophyll *a* fluorescence changes in the Bay of Biscay, 519-529
- Phytoplankton production in Belfast Lough, 555-564
- Salinity preference of *Vaucheria* spp., 531-545

Physical Oceanography

- Fluorescence changes in the Bay of Biscay, 519-529
- North Sea benthic environment, 125-141

Physiology and Experimental Biology

- Deformability of fish erythrocytes, 619-625
- Effect of light cycle and temperature on *Pectinaria*, 55-59
- Imposex in dog-whelks induced by six organotin compounds, 733-744
- Imposex in dog-whelks induced by TBT, 715-731
- Mortality in transplanted *Chlamys*, 251-258
- Physiological parameters and growth rate of rotifers, 165-177
- Temperature effects on metal metabolism, 93-100
- Temperature and salinity tolerance of molluscs, 15-23
- Zinc and cadmium uptake by polychaetes, 61-80
- Zinc regulation in Crustacea, 25-40

Pollution Studies

- Imposex in dog-whelks induced by six organotin compounds, 733-744
- Imposex in dog-whelks induced by TBT, 715-731
- Zinc regulation in Crustacea, 25-40

SUBJECT INDEX

Population Studies

- Copepods in the North Sea, 143-164
- Echinoderm population off Brittany, 41-54
- Growth and ageing of bass, 179-214
- Herring and pilchards in the Western
Approaches associated with climatic
change, 423-445
- Inshore fish populations in Shetland, 601-617
- Whiting in the Severn Estuary, 295-313

Structure and Histology

- Haemocytes in barnacles, 391-397
- Histology of the polychaete gut, 447-464
- Paragnaths of intertidal crustaceans, 581-590

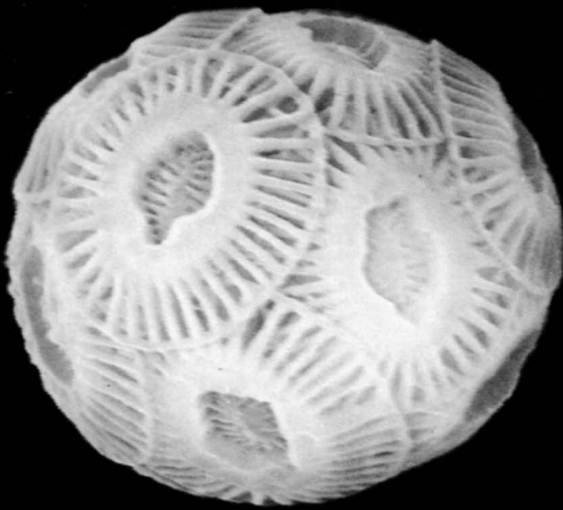
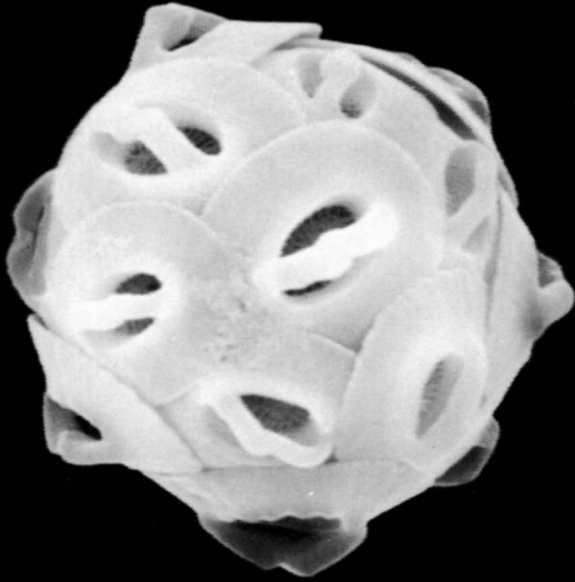
- Respiratory epithelia in the mudskipper, 413-422
- Ultrastructure of the crustacean hepatopancreas,
323-337

Taxonomy and Life History

- Copepod parasites of *Alcyonium*, 351-359
- Description of seven ciliates, 639-658
- Key to the genus *Ampelisca*, 659-676
- Taxonomy of ten planktonic ciliates, 259-276

Technique and Methodology

- A portable light-trap for crustaceans, 235-238
- An underwater event recorder, 287-293



JMBA

VOLUME 69:1 FEBRUARY 1989

CONTENTS

Davenport, J. The effects of salinity and low temperature on eggs of the Icelandic capelin <i>Mallotus villosus</i>	1
Essink, K., Kleef, H. L. and Visser, W. On the pelagic occurrence and dispersal of the benthic amphipod <i>Corophium volutator</i>	11
Hughes, R. G. and Henderson, D. H. J. Morphological adaptations of <i>Aglaophenia harpago</i> (Hydrozoa: Plumulariidae) to enhance feeding efficiency	17
Emson, R. H. and Whitfield, P. J. Aspects of the life history of a tide pool population of <i>Amphipolis squamata</i> (Ophiuroidea) from South Devon	27
Crescitelli, F. The visual pigments of a deep-water malaco-steid fish	43
Alexander, C. G. Tegumental glands in the paragnaths of <i>Palaemon serratus</i> (Crustacea: Natantia)	53
McFadden, Y. M. T. and Myers, A. A. The life history and reproductive biology of <i>Odostomia eulimoides</i> (Gastropoda: Opisthobranchia) on the south coast of Ireland	65
Horwood, J. W., Greer Walker, M. and Witthames, P. The effect of feeding levels on the fecundity of plaice (<i>Pleuronectes platessa</i>)	81
Austen, M. C. New species of <i>Terschellingia</i> (Nematoda: Linhomoeidae) from the Tamar estuary, England and the Maldives Islands	93
Grigg, H., Holmes, L. J. and Bardwell, S. J. Patterns of variation in the dry body weight of <i>Calanus finmarchicus</i> in copepodite Stage V during autumn and winter in the Firth of Clyde	101
Eleftheriou, A. and Basford, D. J. The macrobenthic infauna of the offshore northern North Sea	123
Henderson, P. A. On the structure of the inshore fish community of England and Wales	145
Wood, A. P. and Kelly, D. P. Methylo-trophic and autotrophic bacteria isolated from lucinid and thyasirid bivalves containing symbiotic bacteria in their gills	165
Fuller, S. C. and Lutz, R. A. Shell morphology of larval and post-larval mytilids from the north-western Atlantic	181
Nott, J. A. and Langston, W. J. Cadmium and the phosphate granules in <i>Littorina littorea</i>	219
Maddock, L., Harbour, D. S. and Boalch, G. T. Seasonal and year-to-year changes in the phytoplankton from the Plymouth area, 1963-1986	229
Book Notices	245