

The Journal of Laryngology and Otology

EDITED BY

WALTER HOWARTH

ASSISTANT EDITOR
G. H. BATEMAN

WITH THE COLLABORATION OF
Sir V. NEGUS R. G. MACBETH

Contents

NASO-PHARYNGEAL STENOSIS	W. R. DENNY and C. P. WILSON ✓
THE ROSEN OPERATION—EARLY EXPERIENCE	WILLIAM MCKENZIE ✓ and E. H. RAINER
HEARING LOSS OF THE PERCEPTIVE TYPE	STEEN JOHNSEN ✓
THE VOCAL CORD POLYP	S. S. EPSTEIN, ✓ P. WINSTON, I. FRIEDMANN and F. C. ORMEROD
TREATMENT OF SINUSITIS IN CHILDHOOD: THE EFFECT OF A DETERGENT	C. A. HOLBOROW ✓
TREATMENT OF CHRONIC SINUSITIS	T. M. BANHAM ✓
CLINICAL RECORDS—	
BILATERAL MALIGNANT DISEASE OF THE MIDDLE EAR	H. B. JUBY ✓
ACUTE OSTEOMYELITIS OF THE MAXILLA IN AN INFANT WITH METASTATIC FOCI	A. E. W. GREGSON and ✓ P. M. YEOMAN
GENERAL NOTES	

London

Headley Brothers Ltd

109 Kingsway WC2

Annual Subscription £3/3/0 net, U.S.A. \$10

Monthly, 7/6 net post free

ADVERTISEMENTS

The Journal of Laryngology and Otology

(FOUNDED in 1887 by MORELL MACKENZIE and NORRIS WOLFENDEN)

EDITED BY

WALTER HOWARTH

ASSISTANT EDITOR

G. H. BATEMAN

WITH THE COLLABORATION OF

Sir V. NEGUS

R. G. MACBETH

1. Original Articles are accepted on the condition that they have not been published elsewhere.

2. Manuscripts should be typewritten, on one side only of the paper, and well spaced. Captions to illustrations should be typed on a separate sheet and sent at the same time as original photographs etc.

The Harvard system of recording references should be used, e.g. GREEN, C., and BROWN, D. (1951) *J. Laryng.*, 65, 33. Abbreviations of Journals should follow the style recommended in *World Medical Periodicals*, published by World Health Organization 1952.

It is most important that authors should verify *personally* the accuracy of every reference before submitting a paper for publication.

3. Galley proofs and engraver's proofs of illustrations are sent to the author. Corrections, which should be kept to a minimum must be clearly marked, and no extra matter added. Proofs should be returned within 5 days.

4. Illustration blocks are provided free up to the limit of £10 per article; beyond this authors are expected to pay half the cost. Coloured illustrations will be charged in full to authors.

Blocks will normally be held by the Printers for three years after which they will be destroyed. Any author who has borne a part of the cost of his blocks is entitled to have these returned to him, but a request for this must be sent within three years of the appearance of the article, to HEADLEY BROTHERS LTD., 109 Kingsway London, WC2.

5. Orders for reprints should be sent when returning galley proofs, and for this purpose special forms are supplied.

6. Authors of original communications on Oto-Laryngology in other journals are invited to send a copy, or two reprints, to the *Journal of Laryngology*. If they are willing, at the same time, to submit their own abstract (in English, French, Italian, or German) it will be welcomed.

7. Editorial communications may be addressed to THE EDITOR, *Journal of Laryngology*, c/o HEADLEY BROTHERS LTD., 109 Kingsway London, WC2.

8. The annual subscription is three guineas sterling (U.S.A. \$10) post free, and is payable in advance.

9. Single copies will be on sale at 7s. 6d. each; copies of parts up to Vol. LXIII may be purchased at 4s. each.

10. All subscriptions, advertising and business communications should be sent to the publishers, HEADLEY BROTHERS LTD., 109 KINGSWAY LONDON, WC2.

United States of America

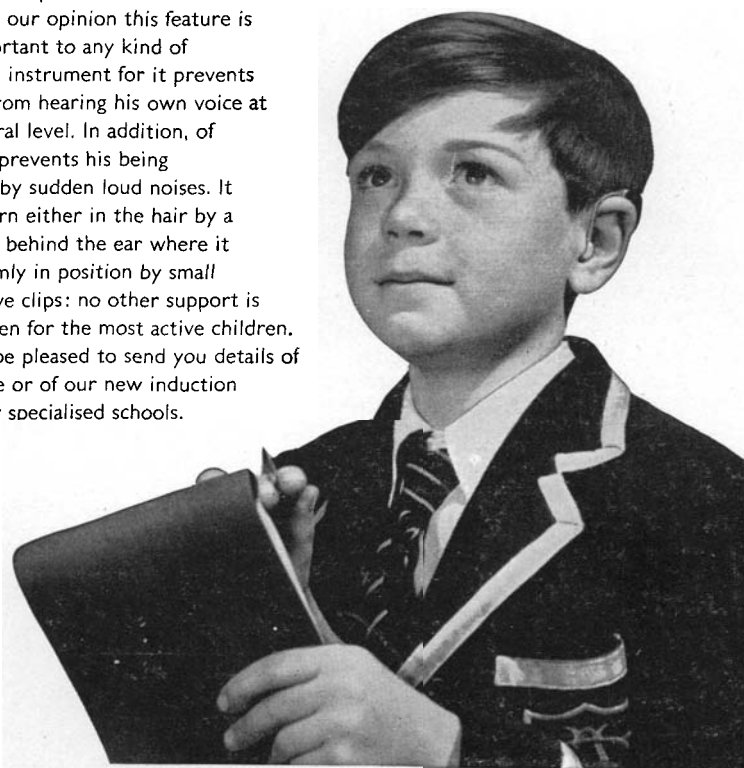
Orders for this *Journal* may be sent through local bookseller, or to STECHERT-HAFNER, INC., 31-33 East 10th Street, New York, or direct to the publishers, HEADLEY BROTHERS LTD., 109 KINGSWAY LONDON, WC2, England.

Please mention *The Journal of Laryngology* when replying to advertisements

ORETTE

The new Multitone headborne hearing aid
The smallest aid to have
automatic volume control

In spite of its miniature size, the Multitone ORETTE incorporates automatic volume control. In our opinion this feature is most important to any kind of headborne instrument for it prevents the user from hearing his own voice at an unnatural level. In addition, of course, it prevents his being disturbed by sudden loud noises. It can be worn either in the hair by a woman or behind the ear where it is held firmly in position by small unobtrusive clips: no other support is needed even for the most active children. We shall be pleased to send you details of the Orette or of our new induction system for specialised schools.



MULTITONE ELECTRIC COMPANY LIMITED
25 Dover Street, London, W.1. Tel: HYDe Park 9977

CRC 1

Please mention *The Journal of Laryngology* when replying to advertisements



INVALUABLE AIDS TO DIAGNOSIS

THE RANGE of the internationally known Peters audiometers is designed to meet all audiometric requirements, from those of a large Clinic to audiometric tests in schools.

In addition to a large speech audiometer for free-field work the range includes three pure-tone audiometers:

The SPD/2 Clinic Audiometer illustrated above, a most comprehensive instrument providing many facilities for advanced techniques. The SPD/3 Consulting Audiometer designed to meet all normal audiometric needs.

The SPD/1 Portable (Basic Diagnostic) the most recent addition

to the range, which ideally fills basic requirements in a portable form.

All three instruments offer a single zero reference level for all measurements, the Peters patented continuously variable attenuator and provision for simple speed audiometry. All are made to the same high standard, differing only in the facilities which they offer.

For the convenience of specialists all these instruments are available for demonstration at the ACOUSTICON Showrooms or, on request, at the specialist's consulting room or hospital.



Literature and any information on request:

122 Wigmore Street, London, W.1. Telephone: Welbeck 0935

St. Ann's Arcade, 12 St. Ann's Square, Manchester.

Telephone: Blackfriars 2109

128 Hope Street, Glasgow, C.2. Telephone Central 4634

ALFRED PETERS AND SONS LIMITED, VICTORIA WORKS, GELL STREET, SHEFFIELD, 3

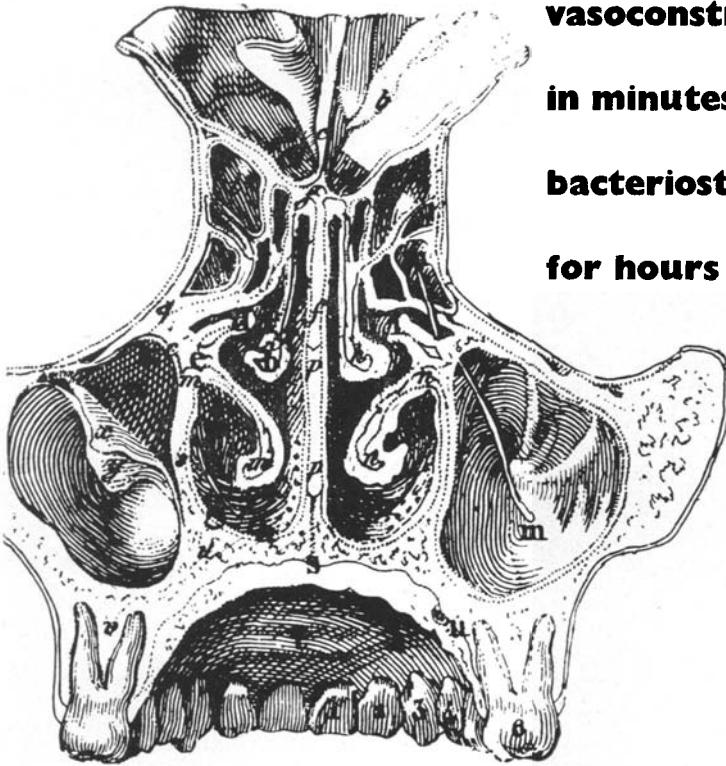
Please mention *The Journal of Laryngology* when replying to advertisements

*'... it is singularly effective
in chronic and acute sinusitis'*

(SILCOX, L. E. (1954) *Arch. Otolaryng.* **59**, 312)

Sulfex

**vasoconstriction
in minutes —
bacteriostasis
for hours**



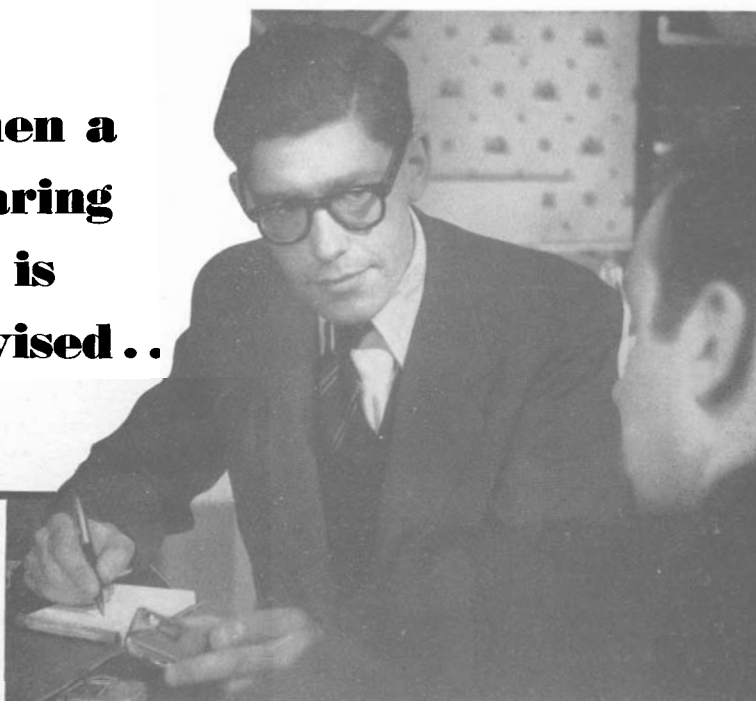
Smith Kline & French Laboratories Ltd Coldharbour Lane, London SE5

SX:PA77

'Sulfex' is a trade mark

Please mention *The Journal of Laryngology* when replying to advertisements

**When a
hearing
aid is
advised . .**



**. . you may confidently
recommend your patients
to S. C. INGRAM**

- ★ They can try the different makes of hearing aids
- ★ They get impartial advice on all makes of hearing aids
- ★ Their personal needs are given individual and continued attention
- ★ A full report on each fitting recommended is sent to the patient's ear specialist
- ★ They can compare at one consultation the different makes one with another

S. C. INGRAM Independent Hearing Aid Consultant

On the approved List of the National Institute for the Deaf

2 SHEPHERD STREET, SHEPHERD MARKET, LONDON, W.1

Hyde Park 9042

Please mention *The Journal of Laryngology* when replying to advertisements

AMPLIVOX MODEL 61 THE CLINICAL AUDIOMETER OF INTERNATIONAL REPUTE

"Messrs. Amplivox were among the first firms to produce an audiometer in this country, and their larger model is one of the best instruments of the kind now made in the world at a competitive price."—The LANCET.

- Eleven exact test frequencies 125-12,000 c.p.s.
- Simplified hearing loss dial. The same set of figures is read for both bone and air conduction at all frequencies, and for speech.
- Bone conduction tests can be made from 125-4,000 c.p.s.
- Masking Tone calibrated in decibels, permitting accurate control of masking.
- Double Air receivers enable test tones to be switched instantly from ear to ear.
- Speech test circuit monitors speech level, permitting accurate measurement of hearing loss for speech.
- Loudness Balance Control establishes presence of recruitment in monaural deafness.
- Automatic voltage compensator.

Recruitment Test Set accessory establishes presence of recruitment by amplitude modulation, enabling each ear to be tested independently.

Speech Turntable, English made P.B. and Harvard Spondee Records available.

Full details are available from the manufacturers who will gladly arrange demonstrations if required.



The Basic Instrument of Modern Otology

ACCURATE • COMPLETE • SIMPLE TO OPERATE

AMPLIVOX LTD., 2 BENTINCK ST., LONDON, W.1 (Welbeck 2591)

Please mention *The Journal of Laryngology* when replying to advertisements

CONTENTS

	PAGE
NASO-PHARYNGEAL STENOSIS. W. R. Denny and C. P. Wilson (London)	645
THE ROSEN OPERATION—EARLY EXPERIENCE. William McKenzie and E. H. Rainer (London)	655
HEARING LOSS OF THE PERCEPTIVE TYPE. Steen Johnsen (Copen- hagen)	667
THE VOCAL CORD POLYP. S. S. Epstein, P. Winston, I. Friedmann and F. C. Ormerod (London)	673
TREATMENT OF SINUSITIS IN CHILDHOOD: THE EFFECT OF A DETER- GENT. C. A. Holborow (London)	689
TREATMENT OF CHRONIC SINUSITIS. T. M. Banham (Truro)	693
CLINICAL RECORDS—	
Bilateral Malignant Disease of the Middle Ear. H. B. Juby (London)	700
Acute Osteomyelitis of the Maxilla in an Infant with Metasta- tic Foci. A. E. W. Gregson and P. M. Yeoman (Leeds)	703
GENERAL NOTES	707

For Advertisement space in this Journal apply to:
HEADLEY BROTHERS Ltd, 109 Kingsway London WC 2

Please mention *The Journal of Laryngology* when replying to advertisements