

CAMBRIDGE

JOURNALS

Archaeological Dialogues

Editors

Michael Dietler, University of Chicago, USA

Sarah Tarlow, University of Leicester, UK

Jeremia Pelgrom, Koninklijk Nederlands Instituut, Rome, Italy

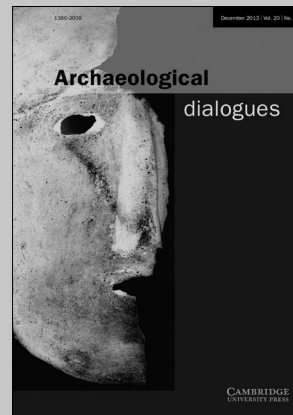
Archaeology is undergoing rapid changes in terms of its conceptual framework and its place in contemporary society. In this challenging intellectual climate, *Archaeological Dialogues* has become one of the leading journals for debating innovative issues in archaeology. Firmly rooted in European archaeology, it now serves the international academic community for discussing the theories and practices of archaeology today. True to its name, debate takes a central place in *Archaeological Dialogues*.

Price information

is available at: <http://journals.cambridge.org/ard>

Free email alerts

Keep up-to-date with new material – sign up at
<http://journals.cambridge.org/ard-alerts>



Archaeological Dialogues

is available online at:
<http://journals.cambridge.org/ard>

To subscribe contact Customer Services

in Cambridge:

Phone +44 (0)1223 326070

Fax +44 (0)1223 325150

Email journals@cambridge.org

in New York:

Phone +1 (845) 353 7500

Fax +1 (845) 353 4141

Email

subscriptions_newyork@cambridge.org

For free online content visit:
<http://journals.cambridge.org/ard>



CAMBRIDGE
UNIVERSITY PRESS

CAMBRIDGE

JOURNALS

The Classical Review

Published for The Classical Association

Editor

Mike Edwards, University of Wales Trinity Saint David, UK
Roger Rees, University of St Andrews, UK

The Classical Review publishes informative reviews from leading scholars on new work covering the literatures and civilizations of ancient Greece and Rome. Publishing over 150 high quality reviews and 50 brief notes every year, *The Classical Review* is an indispensable reference tool, essential for keeping abreast with current classical scholarship.

Price information

is available at: <http://journals.cambridge.org/car>

Free email alerts

Keep up-to-date with new material – sign up at
<http://journals.cambridge.org/car-alerts>



The Classical Review
is available online at:
<http://journals.cambridge.org/car>

To subscribe contact Customer Services

in Cambridge:

Phone +44 (0)1223 326070
Fax +44 (0)1223 325150
Email journals@cambridge.org

in New York:

Phone +1 (845) 353 7500
Fax +1 (845) 353 4141
Email
subscriptions_newyork@cambridge.org

For free online content visit:
<http://journals.cambridge.org/car>



CAMBRIDGE
UNIVERSITY PRESS

Notes for Contributors

The *Cambridge Archaeological Journal* (ISSN 0959-7743) was founded in 1991 as one of the key initiatives of the McDonald Institute for Archaeological Research. It has come to be recognized as one of the leading journals in archaeological theory. CAJ is published three times a year in February, May, August and November with articles available online earlier. It covers significant archaeological research, both theoretical and descriptive.

We are keen to receive articles and other material that deals with broadly-defined social, symbolic and cognitive issues such as art and iconography, burial and ritual, representations and symbolism, and the evolution of human cognition. We aim to promote research into these issues, and to provoke discussion and debate.

CAJ has no restriction on period or place, and we are happy to receive material from any part of the world. Recently published papers have spanned the whole range of archaeology from the Lower Palaeolithic to Colonialism, and from the Pacific to Central Asia, from Maya cities to Neolithic northwest Europe.

Submissions

All manuscripts should be submitted via CAJ 's online submission system, which can be found at: <http://mc.manuscriptcentral.com/caj>.

Submission of an article is taken to imply that it has not previously been published, and has not been submitted for publication elsewhere. Upon acceptance of a paper, the author will be asked to assign copyright (on certain conditions) to the McDonald Institute for Archaeological Research.

Contributors are responsible for obtaining permission to reproduce any material in which they do not own copyright, to be used in both print and electronic media, and for ensuring that the appropriate acknowledgements are included in their manuscript.

Articles should normally be up to 12,000 words (including references), but longer articles will be considered if their length is justified. There is also provision for shorter notes of up to 5000 words. In the case of articles (though not shorter notes) an abstract of up to 180 words should be supplied. In both cases the affiliation and email address of each author should appear just before the references and a 50-word biography of each author specifying current academic position, subject interests and any relevant publications should be included after the bibliography.

All figures will be published in colour online if desired. Figures for revised versions which have been accepted for publication should be submitted as individual high-quality digital files. There is some scope for including online supplementary material.

For matters of style, prospective contributors should use the current issue of the Journal as a guide to preferred practice. Detailed guidelines are available at http://assets.cambridge.org/CAJ/CAJ_ifc.pdf. Manuscripts may be submitted as written but, if accepted, must be converted to journal style before the article can go into production.

Offprints. Authors receive a complimentary pdf of their paper on publication. Offprints may be purchased if ordered at proof stage.

CAMBRIDGE ARCHAEOLOGICAL JOURNAL

Volume 25 Number 2 May 2015

Articles		
Aubrey Cannon & Katherine Cook	Infant Death and the Archaeology of Grief	399–416
Erin Gibson	Movement, Power and Place: The Biography of a Wagon Road in a Contested First Nations Landscape	417–434
Antonio Blanco-González	Unconventional Prehistoric Worlds: Untangling the Later Bronze Age in Central Iberia	435–460
José Antonio González Zarandona	Towards a Theory of Landscape Iconoclasm	461–475
Robert Schon	Weight Sets: Identification and Analysis	477–494
Julien Vieugué, Laure Salanova, Martine Regert, Sigrid Mirabaud, Anne-Solenn Le Hô & Éric Laval	The Consumption of Bone Powder in the Early Neolithic Societies of Southeastern Europe: Evidence of a Diet Stress?	495–511
Daniel A. Contreras	Landscape Setting as Medium of Communication at Chavín de Huántar, Peru	513–530
Reviews		
Nicholas Postgate	<i>Agency in Ancient Writing</i> , edited by Joshua Englehardt	531–533
Stephen Shennan	<i>First Migrants: Ancient Migration in Global Perspective</i> , by Peter Bellwood	533–534
Antonio Blanco-González	<i>Space and Time in Mediterranean Prehistory</i> , edited by Stella Souvatzi & Athena Hadji	534–537
Simon Mays	<i>Medicine, Healing and Performance</i> , edited by Effie Gemi-Iordanou, Stephen Gordon, Robert Matthew, Ellen McInnes & Rhiannon Pettitt	537–538