

***In situ* Liquid TEM Study for Degradation Mechanisms of Fuel Cell Catalysts during Potential Cycling Test**

Shinya Nagashima^{1,5}, Kenta Yoshida^{2,3}, Tomoki Hiroyama², Kun Liu², Yipu Kang², Toshihiro Ikai⁴, Hisao Kato⁴, Tetsuo Nagami⁴ and Keisuke Kishita⁵

¹. Materials Research and Development Laboratory, Japan Fine Ceramics Center, Atsuta-ku, Nagoya, 456-8587, Japan

². Nanostructures Research Laboratory, Japan Fine Ceramics Center, Atsuta-ku, Nagoya, 456-8587, Japan

³. Institute for Advanced Research, Nagoya University, Chikusa-ku, Nagoya, 464-8603, Japan

⁴. Catalyst Design Department, Material Engineering Division, Toyota Motor Corporation, Toyota-cho, Toyota, Aichi, 471-8572, Japan

⁵. Material Analysis Department, Material Development Division, Toyota Motor Corporation, Toyota-cho, Toyota, Aichi, 471-8572, Japan

The polymer electrolyte fuel cell (PEFC) is a promising energy source for fuel cell vehicles. The typical electrocatalyst used in PEFCs consists of platinum nanoparticles on carbon black (Pt/C). The development of advanced electrocatalysts for PEFCs requires reduction of Pt usage and enhancement of durability [1-3]. To achieve further design improvements for Pt/C electrocatalysts, it is essential to understand the degradation mechanisms in real space for Pt/C electrocatalysts.

We applied *in situ* liquid TEM observation technique using a liquid flow cell TEM holder with electrical biasing capabilities (Poseidon, Protochips Inc.) into the differential pumping environmental TEM (Titan ETEM, FEI Company) for direct observation of structural changes of Pt/C electrocatalysts. The electrochemical cell simulating environment of activated PEMFC was comprised of deposited Pt/C electrocatalyst onto an electrode on a MEMS chip and flowing electrolytic solution of 0.1 M and 0.2 M HClO₄. We obtained cyclic voltammetry (CV) curves by electrochemical measurement and dynamic TEM movies simultaneously.

Figure 1-3 are selected area captured (SAC) images of movies obtained from Pt/C electrocatalysts in HClO₄ solution during potential cycling tests. We succeeded in direct observation of degradation behaviour of Pt/C electrocatalysts such as dissolution of Pt nanoparticles (Figure 1), detachment of a Pt nanoparticle from carbon support (Figure 2) and aggregation via Pt nanoparticles migration (Figure 3) which had been suggested [1-3].

In conclusion, *in situ* liquid TEM observation during potential cycling tests is a powerful tool for understanding of electrochemical behaviour of electrocatalysts of PEMFCs in nanometer scale.

References:

[1] Y. Shao-Horn, W. C. Sheng, S. Chen, P. J. Ferreira, E. F. Holby and D. Morgan, *Top catal*, **46**, (2007), p. 285-305.

[2] X. Yu, S. Ye, *Journal of Power Sources*, **172**, (2007), p. 145-154.

[3] J. C. Meier, C. Galeano, I. Katsounaros, A. A. Topalov, A. Kostka, F. Schüth and K. J. J. Mayrhofer, *ACS Catal*, **2**, (2012), p. 832-843.

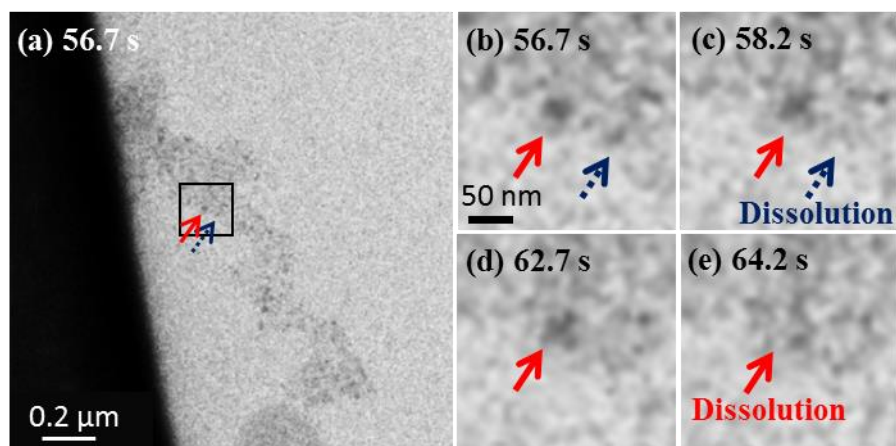


Figure 1. SAC images obtained from the Pt/C electrocatalysts over the potential range from -0.75 V to 0.30 V (vs. Pt) at a scan rate of 50mV/s in 0.1 M HClO₄ at room temperature.

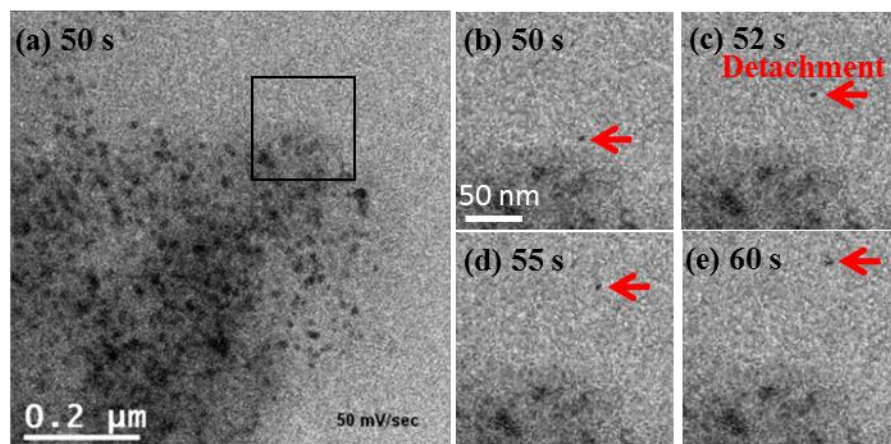


Figure 2. SAC images obtained from the Pt/C electrocatalysts over the potential range from -0.70 V to 0.45 V (vs. Pt) at a scan rate of 50mV/s in 0.2 M HClO₄ at room temperature.

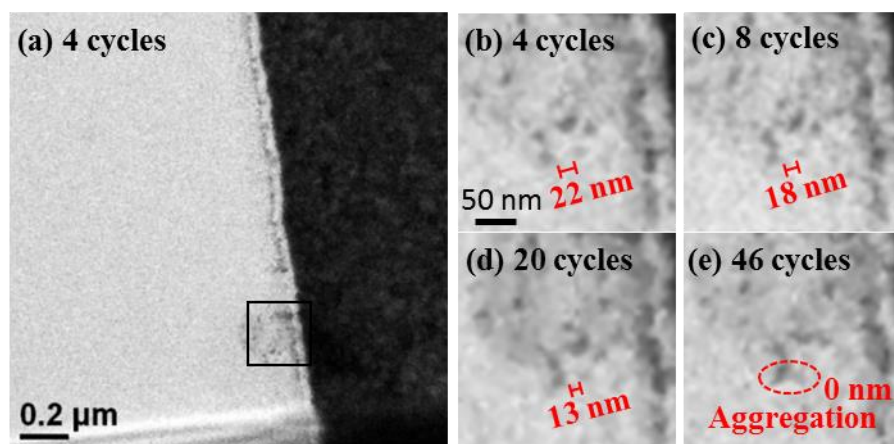


Figure 3. SAC images obtained from the Pt/C electrocatalysts over the potential range from -0.70 V to 0.45 V (vs. Pt) at a scan rate of 500mV/s in 0.2 M HClO₄ at room temperature.