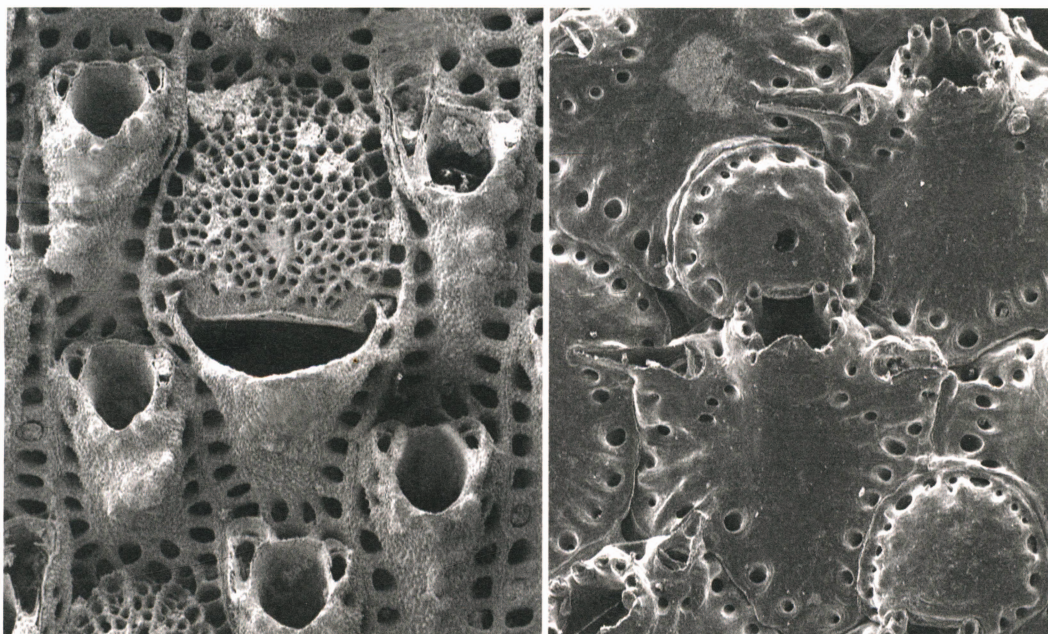


JOURNAL OF
PALEONTOLOGY

METRARABDOTOS AND RELATED GENERA (BRYOZOA:
CHEILOSTOMATA) IN THE LATE PALEOGENE AND NEOGENE OF
TROPICAL AMERICA

ALAN H. CHEETHAM, JOANN SANNER, AND JEREMY B. C. JACKSON



THE PALEONTOLOGICAL SOCIETY MEMOIR 67

SUPPLEMENT TO JOURNAL OF PALEONTOLOGY □ ISSN 0022-3360 □ JPALAZ 81 1 1-92 JANUARY 2007

Memoirs of The Paleontological Society are occasional publications consisting of monographs and symposia that are too extensive for publication in the Journal of Paleontology as part of the regular issues. Ordinarily, memoirs are published as supplements to a regular issue of the Journal. Inquiries concerning submittal of manuscripts for inclusion in the Memoir Series may be made to the Editors of the Journal of Paleontology.

For information on cost and availability of back numbers of the Memoir Series, please contact: SEPM Business Office, 1731 East 71st St., Tulsa, OK 74136-5108, for numbers 1 (1968) through 16 (1985) or Journal of Paleontology, P.O. Box 1897, Lawrence, KS 66044-8897, jps@allenpress.com, for number 17 (1986) and following.

The JOURNAL OF PALEONTOLOGY (ISSN 0022-3360) is published bimonthly by The Paleontological Society, 810 East 10th St., Lawrence, KS 66044, USA. Dues and subscriptions for members of The Paleontological Society are \$86 per year. Subscription price is \$165 per year. Periodical postage paid at Lawrence, KS. For information on prices of back issues of the JOURNAL, please contact: SEPM Business Office, P.O. Box 4756, Tulsa, OK 74159, for volumes 1 (1927) through 59 (1985) or Paleontological Society Business Office, P.O. Box 1897, 810 East 10th St., Lawrence, KS 66044-8897, for volumes 60 (1986) and following.

Communications about the JOURNAL, notices, subscriptions, rates, changes of address, and nonreceipt of preceding numbers should be addressed to: JOURNAL OF PALEONTOLOGY Subscriptions Office, P.O. Box 1897, 810 East 10th St., Lawrence, KS 66044-8897, U.S.A., jps@allenpress.com. Claims for nonreceipt of preceding numbers must be submitted within three months (six months if foreign) of the date of publication in order to be filled gratis. Communications about membership and requests for blanks for nomination of new members in The Paleontological Society should be directed to the Secretary: Roger D. K. Thomas, Department of Earth and Environment, Franklin & Marshall College, P.O. Box 3003, Lancaster, PA 17604-3003.

Submit manuscripts online at <http://journalofpaleontology.allentrack.net>

Editors for the Journal are Richard Lupia and Steve Westrop, School of Geology and Geophysics, University of Oklahoma, Norman, OK 73072. Associate editors are: Jason S. Anderson, University of Calgary, janders@ucalgary.ca; Laurie C. Anderson, Louisiana State University, laurie@geol.lsu.edu; David S. Berman, Carnegie Museum of Natural History, bermand@carnegiemn.org; Daniel B. Blake, University of Illinois, dblake@uiuc.edu; Robert L. Carroll, McGill University, robert.carroll@mcgill.ca; Keith Dewing, Geological Survey of Canada, kdewing@NRC.gc.ca; William A. DiMichele, National Museum of Natural History, Dimichele.Bill@nmnh.si.edu; Robert J. Elias, University of Manitoba, eliasrj@Ms.UManitoba.CA; Michael Engel, University of Kansas, msengel@u.ku.edu; John R. Groves, University of Northern Iowa, John.Groves@uni.edu; Steven J. Hageman, Appalachian State University, hagemansj@appstate.edu; Peter J. Harries, University of South Florida, harries@chuma.cas.usf.edu; Martin J. Head, Brock University, mhead@brocku.ca; Eric Hilton, Field Museum of Natural History, ehilton@fieldmuseum.org; Ed Landing, New York State Museum, elanding@mail.nysed.gov; Stephen A. Leslie, University of Arkansas, saleslie@ualr.edu; Bruce Lieberman, University of Kansas, blieber@ku.edu; Mike Melchin, St. Francis Xavier University, Canada, mmelchin@stfx.ca; Brian Pratt, University of Saskatchewan, brian.pratt@usask.ca; Eric Scott, San Bernardino County Museum, escott@sbcn.sbcounty.gov; James Sprinkle, University of Texas, echino@mail.utexas.edu; David M. Work, Maine State Museum; david.work@maine.gov.

The JOURNAL OF PALEONTOLOGY is printed offset by Allen Press, Inc., Lawrence, KS 66044.

Copyright © 2007, The Paleontological Society
ALLEN PRESS, INC., LAWRENCE, KANSAS

COPYRIGHT STATEMENT

The appearance of the code at the top of the first page of an article in this journal indicates the copyright owner's consent that copies of the article may be made for personal or internal use, or for the personal or internal use of specific clients. This consent is given on the condition, however, that the copier pay the stated per copy fee through the Copyright Clearance Center, Inc., P.O. Box 765, Schenectady, New York 12301, for copying beyond that permitted by Sections 107 or 108 of the U.S. Copyright Law. This consent does not extend to other kinds of copying, such as copying for general distribution, for advertising or promotional purposes, for creating new collective works, or for resale.

Ⓢ This paper meets the requirements of ANSI/NISO Z39.48-1992 (Permanence of Paper).

CONTENTS

ABSTRACT	1	<i>Metrarabdotos jungi</i> n. sp.	57
INTRODUCTION	1	<i>Metrarabdotos chipolanum</i> Cheetham, 1968	58
MORPHOLOGY OF <i>METRARABDOTOS</i> , <i>ADEONELLOPSIS</i> , <i>REPTADEONELLA</i> , AND		<i>Metrarabdotos kugleri</i> Cheetham, 1968	58
<i>ESCHAROIDES</i>	4	<i>Metrarabdotos pacificum</i> (Osburn, 1952)	60
Colony form and development	4	<i>Metrarabdotos unguiculatum</i> Canu and Bassler, 1928a ..	62
Morphology and structure of ordinary autozooids	5	<i>Metrarabdotos cookae</i> Cheetham, 1968	62
Morphology of avicularia	8	Other eastern Atlantic species possibly related to crown group	
Morphology of maternal zooids and brooding	9	B	63
SPECIMENS STUDIED AND THEIR STRATIGRAPHIC PROVENANCE	9	<i>Metrarabdotos</i> cf. <i>M. maleckii</i> Cheetham, 1968	63
DISCRIMINATION OF SPECIES IN <i>METRARABDOTOS</i>	10	<i>Metrarabdotos helveticum</i> (Roger and Buge, 1947)	66
Methods	10	<i>Metrarabdotos thomseni</i> n. sp.	66
Results	13	FAMILY Exochellidae Bassler, 1935	66
CLADISTIC RELATIONSHIPS OF <i>METRARABDOTOS</i> SPECIES	14	GENUS <i>Escharoides</i> Milne Edwards, 1836b	66
Methods	14	<i>Escharoides guraboensis</i> n. sp.	67
Results	16	<i>Escharoides costifer</i> (Osburn, 1914)	67
PATTERNS OF MORPHOLOGICAL CHANGE WITHIN <i>METRARABDOTOS</i> SPECIES		FAMILY Adeonidae Busk, 1884	69
.....	18	GENUS <i>Adeonellopsis</i> MacGillivray, 1886	69
Trajectories of change within observed species ranges	18	<i>Adeonellopsis cribrospiramen</i> n. sp.	71
Implications for species origins	20	<i>Adeonellopsis deformis</i> (Canu and Bassler, 1919)	72
TAXONOMIC IMPLICATIONS OF <i>METRARABDOTOS</i> CLADOGRAMS	21	<i>Adeonellopsis guraboensis</i> n. sp.	75
Groupings of tropical American species	21	<i>Adeonellopsis antilleana</i> n. sp.	75
Contributions of character suites to distinctions between groups	23	<i>Adeonellopsis limonensis</i> n. sp.	77
Relationships with eastern Atlantic <i>Metrarabdotos</i> species	24	<i>Adeonellopsis subsulcata</i> (Smitt, 1873)	79
Taxonomic conclusion	26	GENUS <i>Reptadeonella</i> Busk, 1884	81
SPECIES DISTINCTIONS IN RELATED GENERA AND CLADISTIC RELATION TO		<i>Reptadeonella buddae</i> n. sp.	81
<i>METRARABDOTOS</i>	26	<i>Reptadeonella buricaensis</i> n. sp.	83
Tropical American species of related genera	26	<i>Reptadeonella tubulifera</i> (Canu and Bassler, 1930)	83
Cladistic relationships with tropical American <i>Metrarabdotos</i> ..	26	<i>Reptadeonella bipartita</i> (Canu and Bassler, 1928b)	85
SYSTEMATIC PALEONTOLOGY	27	<i>Reptadeonella collinsae</i> n. sp.	87
FAMILY Metrarabdotosidae Vigneaux, 1949	27	<i>Reptadeonella hastingsae</i> Cheetham and Sandberg, 1964 ..	88
GENUS <i>Metrarabdotos</i> Canu, 1914	28	ACKNOWLEDGMENTS	88
<i>Metrarabdotos</i> stem group	29	REFERENCES	88
<i>Metrarabdotos floridanum</i> Cheetham, 1968	29	INDEX	92
<i>Metrarabdotos micropora</i> (Gabb and Horn, 1862)	30		
<i>Metrarabdotos aguilerai</i> n. sp.	32	ILLUSTRATIONS	
<i>Metrarabdotos hispaniolae</i> n. sp.	32	FIGURES	
<i>Metrarabdotos</i> crown group A	35	1—General features of <i>Metrarabdotos</i> Canu, 1914, <i>Escharoides</i>	
<i>Metrarabdotos saundersi</i> n. sp.	35	Milne Edwards, 1836b, <i>Adeonellopsis</i> MacGillivray, 1886, and	
<i>Metrarabdotos boldi</i> n. sp.	37	<i>Reptadeonella</i> Busk, 1884	3
<i>Metrarabdotos coatesi</i> n. sp.	39	2—Typical form of erect (adeoniform) colonies in <i>Adeonellopsis</i> and	
<i>Metrarabdotos tuberosum</i> Canu and Bassler, 1928b	41	<i>Metrarabdotos</i>	6
<i>Metrarabdotos arawakorum</i> n. sp.	42	3—Early colony development in <i>Metrarabdotos</i> and <i>Adeonellopsis</i>	
<i>Metrarabdotos colligatum</i> Canu and Bassler, 1919	42	7
<i>Metrarabdotos auriculatum</i> Canu and Bassler, 1923	44	4—Umbonuloid ultrastructure of frontal shields in <i>Metrarabdotos</i>	
Eastern Atlantic species apparently related to crown group A		and <i>Adeonellopsis</i>	8
.....	46	5—Paleogene correlation chart, showing formations in tropical	
<i>Metrarabdotos moniliferum</i> (Milne Edwards, 1836a)	46	America from which <i>Metrarabdotos</i> was collected	10
<i>Metrarabdotos thomasi</i> Cheetham, 1968	47	6—Neogene correlation chart, showing formations in tropical Amer-	
<i>Metrarabdotos</i> crown group B	47	ica from which <i>Metrarabdotos</i> was collected	11
<i>Metrarabdotos cubaguaense</i> n. sp.	47	7—Two examples of character coding from homogeneous subsets	
<i>Metrarabdotos vokesorum</i> n. sp.	49	of species mean values obtained with Duncan's multiple range	
<i>Metrarabdotos butlerae</i> Cheetham, 1968	51	test (DMRT)	18
<i>Metrarabdotos lacrymosum</i> Canu and Bassler, 1919	52	8—Cladistic relationships among tropical American species of <i>Me-</i>	
<i>Metrarabdotos lopezense</i> n. sp.	54	<i>trarabdotos</i>	18
<i>Metrarabdotos tainorum</i> n. sp.	55	9—Cladogram from Figure 8 visually fitted to stratigraphic ranges	
		of <i>Metrarabdotos</i> species	21

10—Patterns of morphological change in six species of <i>Metrarabdotos</i> in which reanalysis resulted in assignments of colonies different from those in Cheetham (1986a) (Table 11)	22
11—Phenetic relationships among tropical American <i>Metrarabdotos</i> species of stem group (S), crown groups A (C _A) and B (C _B), and selected eastern Atlantic species.	23
12—Cladograms incorporating two eastern Atlantic <i>Metrarabdotos</i> species	24
13—Cladograms incorporating four additional eastern Atlantic <i>Metrarabdotos</i> species	25
14—Cladistic relationships among <i>Escharoides</i> , <i>Adeonellopsis</i> , <i>Reptadeonella</i> , and three groups of <i>Metrarabdotos</i> species	27
15— <i>Metrarabdotos floridanum</i> Cheetham, 1968 and <i>M. micropora</i> (Gabb and Horn, 1862)	31
16— <i>Metrarabdotos aguilerai</i> n. sp. and <i>M. hispaniolae</i> n. sp.	34
17— <i>Metrarabdotos saundersi</i> n. sp. and <i>M. boldi</i> n. sp.	36
18— <i>Metrarabdotos coatesi</i> n. sp. and <i>M. tuberosum</i> Canu and Bassler, 1928b	40
19— <i>Metrarabdotos arawakorum</i> n. sp. and <i>M. colligatum</i> Canu and Bassler, 1919	43
20— <i>Metrarabdotos auriculatum</i> Canu and Bassler, 1923	45
21— <i>Metrarabdotos cubaguaense</i> n. sp. and <i>M. vokesorum</i> n. sp.	48
22— <i>Metrarabdotos butlerae</i> Cheetham, 1968	51
23— <i>Metrarabdotos lopezense</i> n. sp. and <i>M. lacrymosum</i> Canu and Bassler, 1919	53
24— <i>Metrarabdotos tainorum</i> n. sp. and <i>M. jungi</i> n. sp.	56
25— <i>Metrarabdotos chipolanum</i> Cheetham, 1968 and <i>M. kugleri</i> Cheetham, 1968.	59
26— <i>Metrarabdotos pacificum</i> (Osburn, 1952) and <i>M. unguiculatum</i> Canu and Bassler, 1928a	61
27— <i>Metrarabdotos cookae</i> Cheetham, 1968	63
28— <i>Metrarabdotos</i> cf. <i>M. maleckii</i> Cheetham, 1968	64
29— <i>Metrarabdotos thomsoni</i> n. sp.	68
30— <i>Escharoides costifer</i> (Osburn, 1914) and <i>E. guraboensis</i> n. sp.	70
31— <i>Adeonellopsis cribrospiramen</i> n. sp.	72
32— <i>Adeonellopsis deformis</i> (Canu and Bassler, 1919)	74
33— <i>Adeonellopsis guraboensis</i> n. sp.	76
34— <i>Adeonellopsis antilleana</i> n. sp.	78
35— <i>Adeonellopsis limonensis</i> n. sp.	80
36— <i>Adeonellopsis subsulcata</i> (Smitt, 1873)	82
37— <i>Reptadeonella buddae</i> n. sp., <i>R. buricaensis</i> n. sp., and <i>R. tubulifera</i> (Canu and Bassler, 1930)	84
38— <i>Reptadeonella bipartita</i> (Canu and Bassler, 1928b) and <i>R. colinsae</i> n. sp.	86
39— <i>Reptadeonella hastingsae</i> Cheetham and Sandberg, 1964	87

TABLES

1—Morphological characters used in discriminant analysis (DA) of <i>Metrarabdotos</i>	12
2—Summary of material used for discriminant analysis (DA) of <i>Metrarabdotos</i>	12
3—Rank order for morphological characters in stepwise discriminant analyses (DAs) of <i>Metrarabdotos</i>	14
4—Distinctiveness of tropical American species of <i>Metrarabdotos</i> after final discriminant analysis (DA50)	15
5—Morphological characters coded by Duncan's multiple range test (DMRT) for cladistic analysis of <i>Metrarabdotos</i>	17
6—Comparison of morphological characters in <i>Metrarabdotos</i> with respect to rank order in discriminant analysis and "codability" for cladistic analysis	18
7—Character states in <i>Metrarabdotos</i> species for characters of ordinary autozooids	18
8—Character states in <i>Metrarabdotos</i> species for characters of ordinary avicularia	19
9—Character states in <i>Metrarabdotos</i> species for characters of special avicularia	19
10—Character states in <i>Metrarabdotos</i> species for characters of ovicell-bearing zooids	20
11—Changes in species assignment for colonies in Cheetham (1986a) and this paper	21
12—Confidence intervals for stratigraphic first occurrences of <i>Metrarabdotos</i> species in interval of detailed sampling in the Dominican Republic	22
13—Discriminant analyses of tropical American <i>Metrarabdotos</i> species assigned to stem group (S) and crown groups A (C _A) and B (C _B)	23
14—Classification of eastern Atlantic <i>Metrarabdotos</i> species into stem group (S) and crown groups A (C _A) and B (C _B)	25
15—Morphological characters and character states for cladistic analysis of <i>Escharoides</i> , <i>Adeonellopsis</i> , <i>Reptadeonella</i> , and three groups of <i>Metrarabdotos</i>	26
16—Character states for <i>Escharoides</i> , three groups of <i>Metrarabdotos</i> , <i>Adeonellopsis</i> , and <i>Reptadeonella</i>	27
17—Measurements (mm) of <i>Metrarabdotos</i> stem group species	33
18—Measurements (mm) of <i>Metrarabdotos</i> crown group A species	38
19—Measurements (mm) of eastern Atlantic <i>Metrarabdotos</i> species apparently related to crown group A	46
20—Measurements (mm) of <i>Metrarabdotos</i> crown group B species	50
21—Measurements (mm) of eastern Atlantic <i>Metrarabdotos</i> species possibly related to crown group B	65
22—Measurements (mm) of <i>Escharoides</i> species	69
23—Measurements (mm) of <i>Adeonellopsis</i> species	73
24—Measurements (mm) of <i>Reptadeonella</i> species	85