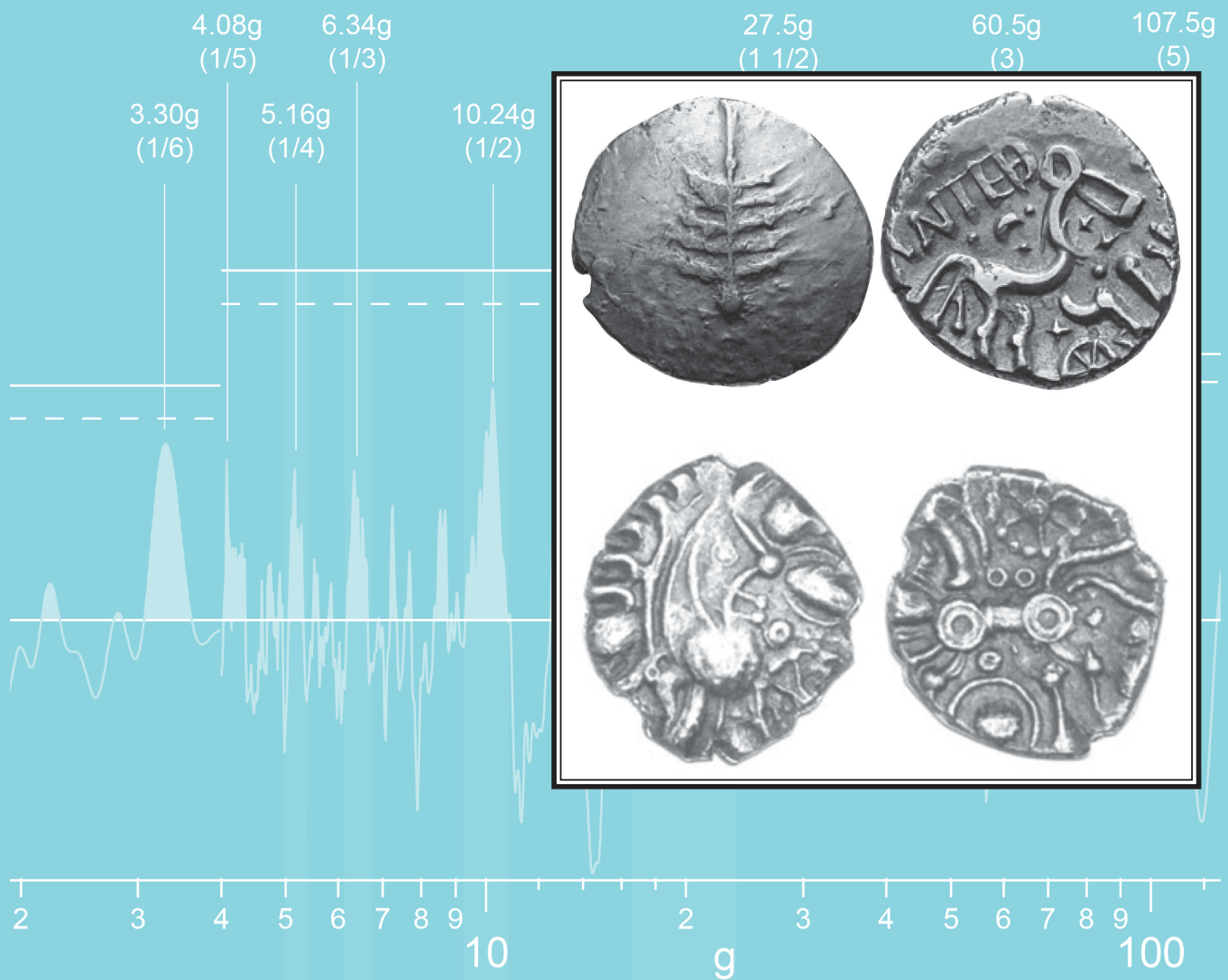


# CAMBRIDGE ARCHAEOLOGICAL JOURNAL



McDonald Institute for Archaeological Research  
University of Cambridge

CAMBRIDGE  
UNIVERSITY PRESS

# CAMBRIDGE ARCHAEOLOGICAL JOURNAL

Published by Cambridge University Press on behalf of  
the McDonald Institute for Archaeological Research, University of Cambridge

Editor: John Robb  
Associate Editors: Elizabeth DeMarrais and Augusta McMahon  
Book Reviews: Thomas Leppard

## Editorial Advisory Board

Benjamin Alberti	<i>Framingham State University</i>
Anthony Aveni	<i>Colgate University</i>
Graeme Barker	<i>Cambridge University</i>
Cyprian Broodbank	<i>Cambridge University</i>
John Creese	<i>North Dakota State University</i>
Matthew Davies	<i>University College London</i>
Rowan Flad	<i>Harvard University</i>
Clive Gamble	<i>University of Southampton</i>
Takeshi Inomata	<i>University of Arizona</i>
Gavin Lucas	<i>University of Iceland</i>
Kathleen Morrison	<i>University of Chicago</i>
April Nowell	<i>University of Victoria</i>
Timothy Pauketat	<i>University of Illinois</i>
Colin Renfrew	<i>Cambridge University</i>
Matthew Spriggs	<i>Australian National University</i>
David Robinson	<i>University of Central Lancashire</i>
Penny Wilson	<i>University of Durham</i>

*Cambridge Archaeological Journal* (ISSN 0959-7743) is published four times a year in February, May, August and November. Four parts form a volume. It covers all areas and periods of archaeology, with a particular focus on the role of human intellectual abilities as reflected for example in the art, religion and symbolism of early societies.

All articles for publication in *Cambridge Archaeological Journal* are peer-reviewed.

© The McDonald Institute for Archaeological Research

**Editorial Office.** Cambridge Archaeological Journal, McDonald Institute for Archaeological Research, University of Cambridge, Downing Street, Cambridge CB2 3ER, UK. Telephone (01223) 339004 or 339336. Email enquiries may be directed to the editor (John Robb, [jer39@cam.ac.uk](mailto:jer39@cam.ac.uk)).

**Subscriptions.** Orders, which must be accompanied by payment, may be sent to any bookseller or subscription agent or direct to the publisher: Cambridge University Press, University Printing House, Shaftesbury Road, Cambridge CB2 8RU, or in the USA, Canada or Mexico to Cambridge University Press, Journals Fulfillment Department, 1 Liberty Plaza, Floor 20, New York, NY 10006. The subscription prices (excluding VAT) of volume 29 (2019), which include delivery by air where appropriate plus electronic access to institutional subscribers are: £321 (\$588 in the USA, Canada and Mexico) for institutions, £42 (\$76 in the USA, Canada and Mexico) for individuals ordering direct from the publisher and certifying that the journal is for their personal use, plus a specially reduced rate of £21 (\$38 in the USA, Canada and Mexico) for students. Single parts are £92 (\$169 in the USA, Canada and Mexico). EU subscribers (outside the UK) who are not registered for VAT should add VAT at their country's rate. Vat registered subscribers should provide their

VAT registration number. Japanese prices for institutions are available from Kinokuniya Company Ltd, P.O. Box 55, Chitose, Tokyo 156, Japan.

Copies of the journal for subscribers in the USA, Canada and Mexico are sent by air to New York to arrive with minimum delay.

**Advertising.** For details contact the publisher at the addresses given above.

**Copying.** The journal is registered with the Copyright Clearance Center, Rosewood Drive, Danvers, MA 01923. Organizations in the USA who are registered with CCC may therefore copy material (beyond the limits permitted by sections 107 and 108 of US copyright law) subject to payment to CCC of the per copy fee of \$12.00 Code 0959-7743/2019 \$12.00.

This consent does not extend to multiple copying for promotional or commercial purposes. ISI Tear Sheet Service, 3501 Market Street, Philadelphia, PA 19104, USA is authorized to provide single copies of separate articles for private use only. Organizations authorized by the Copyright Licensing Agency may also copy material subject to the usual conditions. For all other use permission should be sought from Cambridge University Press.

Information on *Cambridge Archaeological Journal* and all other Cambridge journals can be accessed via [www.journals.cambridge.org](http://www.journals.cambridge.org)

Information on the McDonald Institute and its publications can be accessed via [www.mcdonald.cam.ac.uk](http://www.mcdonald.cam.ac.uk). Telephone: (01223) 339336, Email: [info@mcdonald.cam.ac.uk](mailto:info@mcdonald.cam.ac.uk), Fax: (01223) 339285

Cover images: (background) from Ialongo *CAJ* 29(1), Figure 10; (inset) from Pudney *CAJ* 29(1), Figure 5.

# Cambridge Archaeological Journal

Vol. 29, No. 1, February 2019

## ARTICLES

- The Philippines from c. 14,000 to 4,000 cal. BP in Regional Context**  
BY ALFRED F. PAWLIK & PHILIP J. PIPER 1–22
- Coins and Cosmologies in Iron Age Western Britain** BY CAROLINE PUDNEY 23–44
- Beyond Ethnic Boundaries: Architectural Practices and Social Identity in the Mandara Highlands, Cameroon** BY MELCHISEDEK CHÉTIMA 45–63
- Were Acheulean Bifaces Deliberately Made Symmetrical? Archaeological and Experimental Evidence** BY CERI SHIPTON, CHRIS CLARKSON & ROMMY COBDEN 65–79
- Architectural Assemblages: The Northwest Complex at Zincirli**  
BY DAVID KERTAI 81–101
- The Earliest Balance Weights in the West: Towards an Independent Metrology for Bronze Age Europe** BY NICOLA IALONGO 103–124
- Protection and Purity: Symbolic Functions of the Iron Age Saunas of the Iberian Northwest** BY NADYA H. PROCIUK 125–140
- Archaeological Demography as a Tool for the Study of Women and Gender in the Past** BY JENNIFER C. FRENCH 141–157
- An Inka Offering at Yayno (North Highlands, Peru): Objects, Subjects and Gifts in the Ancient Andes** BY GEORGE F. LAU 159–179
- REVIEW  
*The Ancient Greek Farmstead*, by Maeve McHugh  
REVIEWED BY DAVID K. PETTEGREW 181–182
- CORRIGENDUM 183