

**CORRIGENDUM**

**REVIEW ARTICLE**

# Color signals through dorsal and ventral visual pathways

---

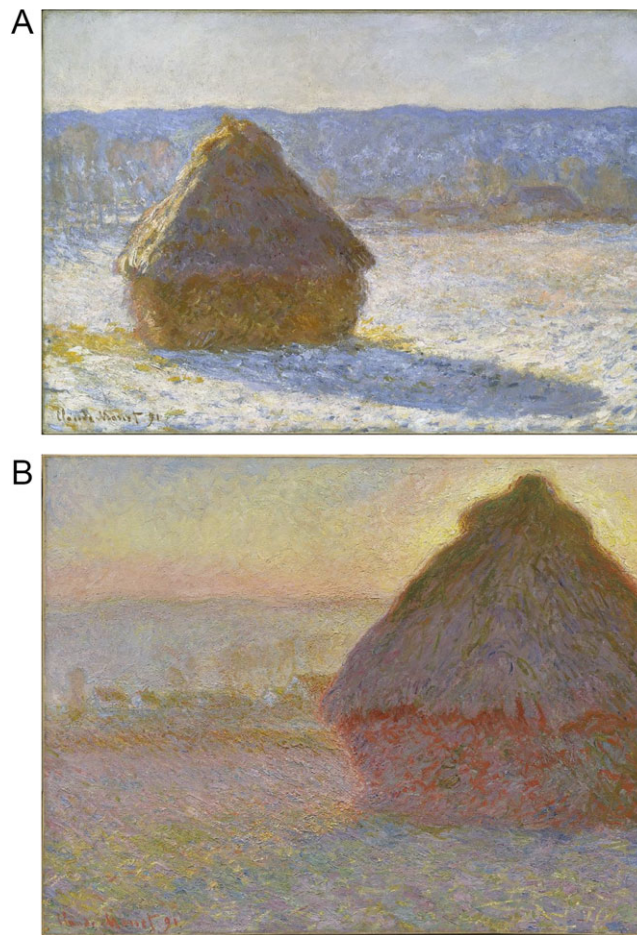
BEVIL R. CONWAY

Neuroscience Program, Wellesley College, Wellesley, Massachusetts

doi:10.1017/S0952523813000382, Published online by Cambridge University Press, 8 October 2013.

(This article was published in Volume 31, Number 2, 2014, pp. 197–209.)

The author regrets that the above article was originally published with incorrectly titled and credited paintings for Fig. 7 A and B (p. 203). The painting in part (A) was mistitled as *Morning Snow Effect* and the painting in part (B) was mistitled as *Haystacks (Sunset)*. The full credit for the reproduction of these paintings was not included in the original article. The correct caption for fig. 7 is reproduced herein.



**Fig. 7.** (A) Claude Monet, French, 1840 -1926. *Grainstack (Snow Effect)*, 1891. Oil on canvas. 65.4 x 92.4 cm (25 3/4 x 36 3/8 in.) Museum of Fine Arts, Boston. Gift of Miss Aimée and Miss Rosamond Lamb in memory of Mr. and Mrs. Horatio Appleton Lamb, 1970.253. Photograph © 2013 Museum of Fine Arts, Boston. (B) Claude Monet, French, 1840 -1926. *Grainstack (Sunset)* 1891. Oil on canvas. 73.3 x 92.7 cm (28 7/8 x 36 1/2 in.) Museum of Fine Arts, Boston. Juliana Cheney Edwards Collection, 25.112. Photograph © 2013 Museum of Fine Arts, Boston. Monet routinely depicts shadows with blue, surrounded by daylight yellow–orange.