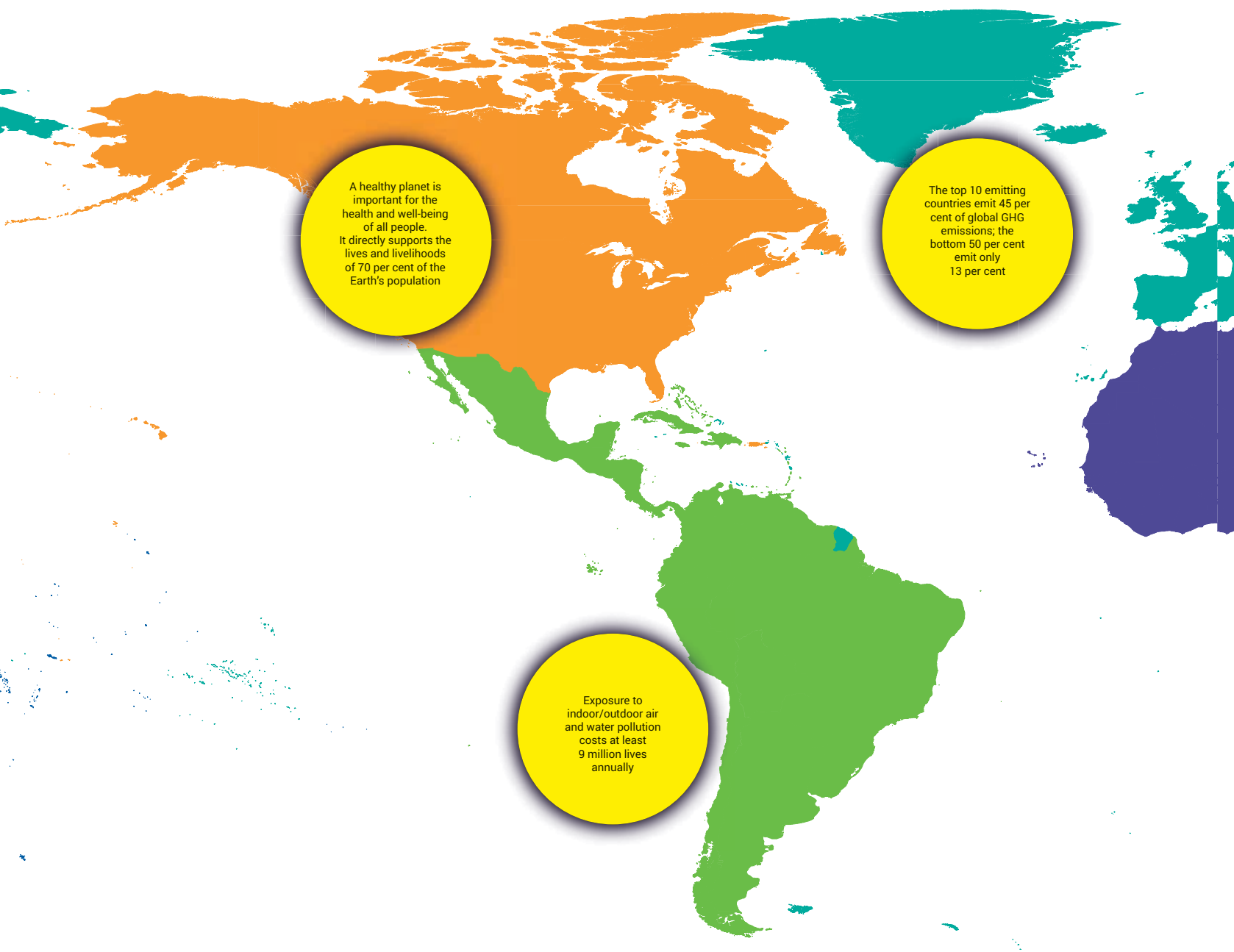


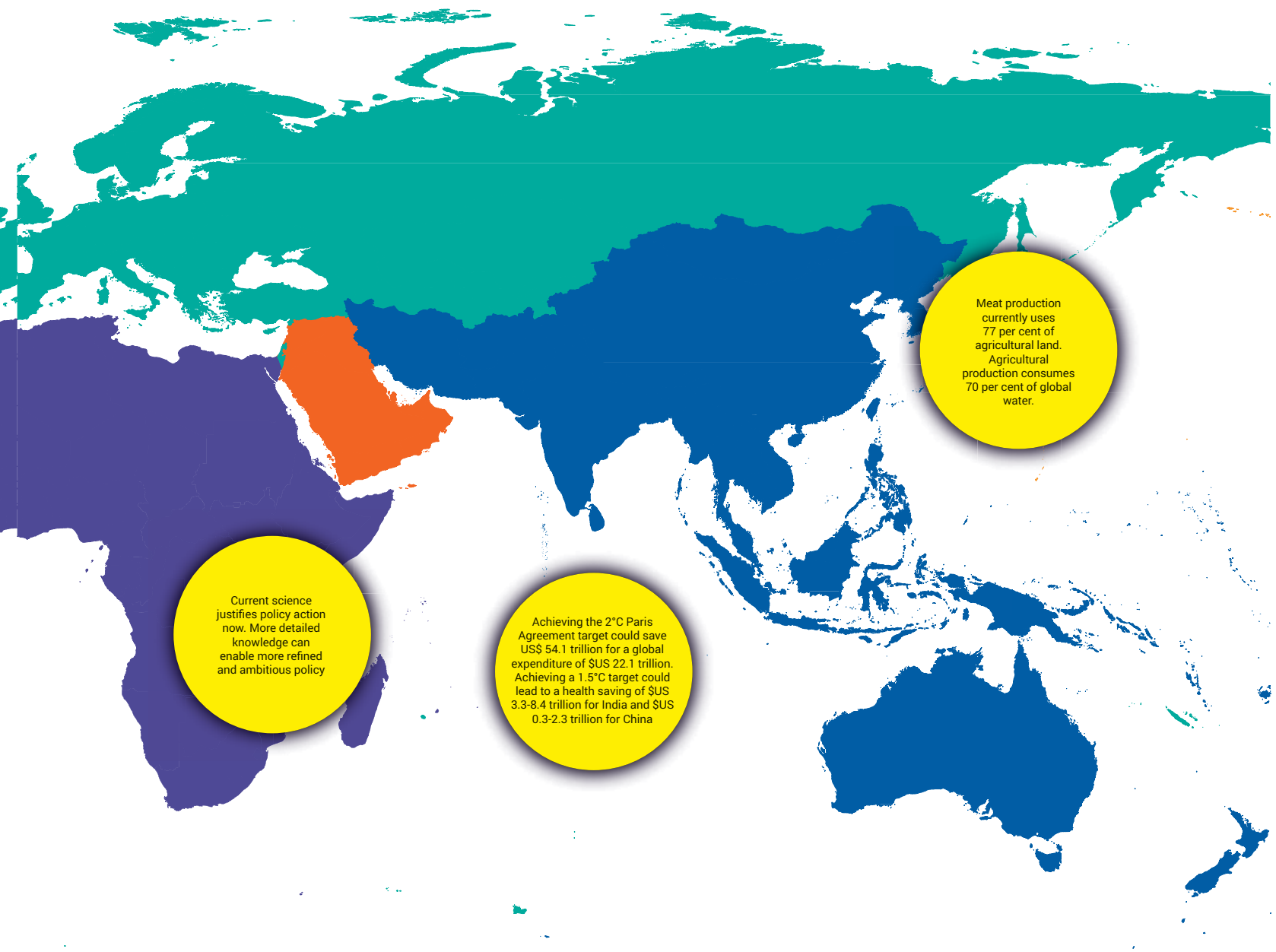
**GLOBAL ENVIRONMENT OUTLOOK**  
**GEO-6**  
**HEALTHY PLANET, HEALTHY PEOPLE**



A healthy planet is important for the health and well-being of all people. It directly supports the lives and livelihoods of 70 per cent of the Earth's population

The top 10 emitting countries emit 45 per cent of global GHG emissions; the bottom 50 per cent emit only 13 per cent

Exposure to indoor/outdoor air and water pollution costs at least 9 million lives annually



Current science justifies policy action now. More detailed knowledge can enable more refined and ambitious policy

Achieving the 2°C Paris Agreement target could save US\$ 54.1 trillion for a global expenditure of \$US 22.1 trillion. Achieving a 1.5°C target could lead to a health saving of \$US 3.3-8.4 trillion for India and \$US 0.3-2.3 trillion for China

Meat production currently uses 77 per cent of agricultural land. Agricultural production consumes 70 per cent of global water.