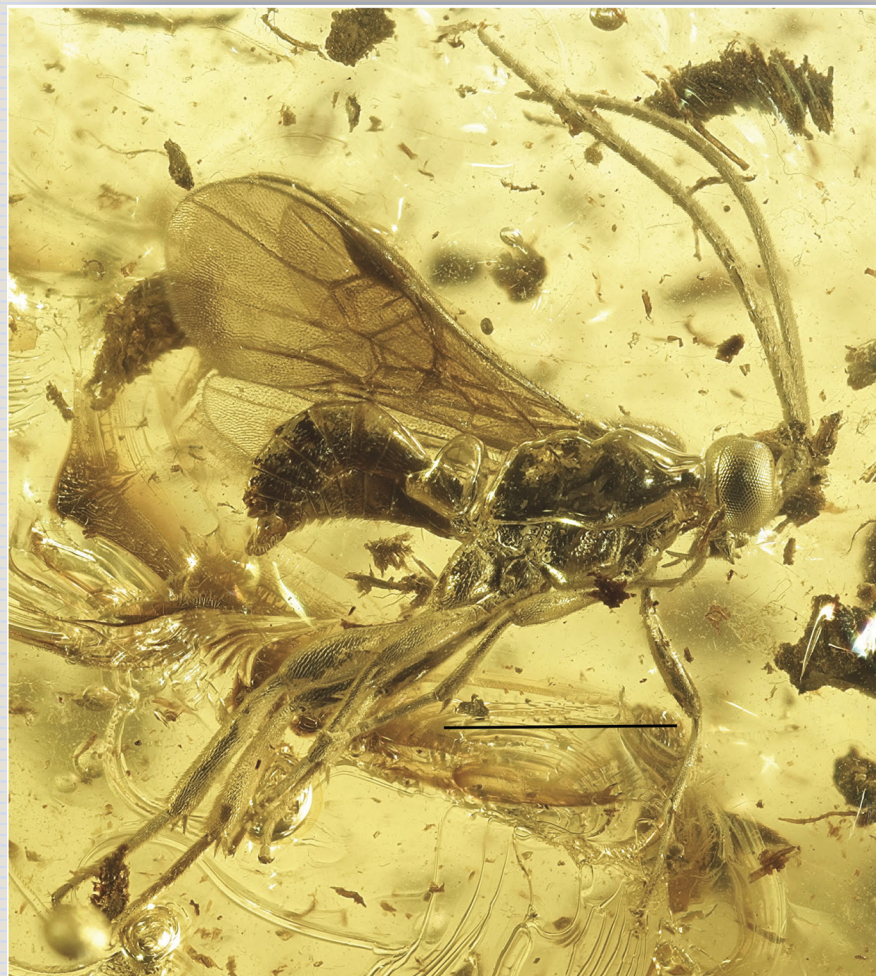


# JOURNAL of PALEONTOLOGY



VOL 95 | NO 6 | NOVEMBER 2021



**CAMBRIDGE**  
UNIVERSITY PRESS



## OFFICERS AND EDITORS OF THE PALEONTOLOGICAL SOCIETY



*President*

WILLIAM DiMICHELE,  
Smithsonian Institution  
president@paleosoc.org

*President-Elect*

ANNE RAYMOND,  
Texas A&M  
presidentelect@paleosoc.org

*Past President*

BRUCE MacFADDEN,  
Florida Museum of Natural History  
pastpresident@paleosoc.org

*Secretary*

CLAUDIA JOHNSON,  
Indiana Univ.  
secretary@paleosoc.org

*Treasurer*

JONATHAN R. HENDRICKS,  
Paleontological Research Institution  
treasurer@paleosoc.org

*JP Editor-in-Chief*

BRENDA R. HUNDA,  
Cincinnati Museum Center  
BHunda@cincymuseum.org

*JP Co-Editors*

JISUO JIN,  
Univ. of Western Ontario  
jjin@uwo.ca

HANS-DIETER SUES,  
Smithsonian Institution  
suesh@si.edu

ELLEN CURRANO,  
Univ. of Wyoming  
ecurrano@uwyo.edu

*JP Associate Editors*

BJORN BERNING,  
Upper Austrian State Museum

JOSEPH BOTTING,  
Nanjing Institute of Geology  
and Paleontology,  
Chinese Academy of Sciences

CHENYANG CAI,  
Nanjing Institute of Geology and  
Palaeontology,  
Chinese Academy of Sciences

TOM CRONIN,  
U.S. Geological Survey

WILLIAM A. DiMICHELE,  
Smithsonian Institution

JAN OVE EBBESTAD  
Museum of Evolution,  
Uppsala Univ.

ROBERT J. ELIAS,  
Univ. of Manitoba

NADIA FRÖBISCH,  
Museum für Naturkunde

PETER J. HARRIES,  
North Carolina State

MICHAEL HAUTMANN,  
Univ. of Zurich

MARTIN J. HEAD,  
Brock Univ.

THOMAS HEGNA,  
SUNY Fredonia

SAMANTHA HOPKINS,  
Univ. of Oregon

BRIAN HUBER,  
Smithsonian Institution

NIGEL HUGHES,  
Univ. of California

NATHAN JUD,  
Univ. of Florida

MICHAEL KAMINSKI  
King Fahd University of Petroleum and  
Minerals

DANIEL KSEPKA,  
Bruce Museum

MARCUS KEY,  
Dickinson College

JAMES LAMSDALL,  
West Virginia Univ.

MAX LANGER,  
Universidade de São Paulo

BERTRAND LEFEBVRE,  
Lyon Univ.

STEPHEN A. LESLIE,  
James Madison Univ.

BRUCE LIEBERMAN,  
Univ. of Kansas

ALEX LIU,  
Univ. of Cambridge

STEVEN LoDUCA,  
Eastern Michigan Univ.

RICK LUPIA,  
Univ. of Oklahoma

GABRIELA MÁNGANO,  
Univ. of Saskatchewan

GREG McDONALD,  
Bureau of Land Management

RICHARD MOOI,  
California Academy of Sciences

ALISON MURRAY,  
Univ. of Alberta

GALINA NESTELL,  
Univ. of Texas at Arlington

PAULA NOBLE,  
Univ. of Nevada

ANDRZEJ PISERA,  
Polish Academy of Sciences

BRIAN PRATT,  
Univ. of Saskatchewan

SIMON SCHNEIDER,  
CASP

CRAIG SCOTT,  
Royal Tyrrell Museum of Paleontology

MARY SILCOX,  
Univ. of Toronto Scarborough

COLIN SPROAT,  
Univ. of Saskatchewan

PAUL TAYLOR,  
Natural History Museum London

DAVID VARRICCHIO,  
Montana State Univ.

STEVE WESTROP,  
Oklahoma Museum

DAVID M. WORK,  
Maine State Museum

MARGARET M. YACOBUCCI,  
Bowling Green State Univ.

SAMUEL ZAMORA,  
Geological Survey of Spain

RENBIN ZHAN,  
Nanjing Institute of Geology and  
Palaeontology,  
Chinese Academy of Sciences

SHUNXIN ZHANG,  
Canada-Nunavut Geoscience Office

ZHIFEI ZHANG,  
Northwest Univ.

*Paleobiology Editor-in-Chief*  
MARK PATZKOWSKY,  
Penn State Univ.

*Paleobiology Co-Editors*  
NADIA FRÖBISCH,  
Museum für Naturkunde

KEVIN BOYCE,  
Stanford Univ.

WOLFGANG KIESSLING,  
Universitat Erlangen

JAMES CRAMPTON,  
GNA Science

*Managing Editor*  
JESSICA KASTIGAR,  
JournalofPaleontology@cambridge.org  
Paleobiology@cambridge.org

*Communications Officer*  
TAORMINA LEPORE,  
Univ. of California, Berkeley  
tlepore@berkeley.edu

*Program Coordinator*  
MATTHEW CLAPHAM,  
Univ. of California, Santa Cruz  
mclapham@ucsc.edu

*Editor, Special Publications*  
COLIN SUMRALL,  
Univ. of Tennessee, Knoxville  
csumrall@utk.edu

*Education/Outreach Coordinator*  
ROWAN LOCKWOOD,  
College of William & Mary  
rxlock@wm.edu

*Diversity and Inclusion Coordinator*  
DENA SMITH,  
Univ. of Colorado  
dena.smith@colorado.edu

*Amateur/Avocational Liaison*  
LINDA McCALL,  
NC Fossil Club Past-President  
lndmccall02@yahoo.com

*Representatives At Large*  
DANITA BRANDT,  
Michigan State Univ.  
brandt@msu.edu

PHOEBE COHEN,  
Williams College  
pac3@williams.edu

*Student Representatives*  
ANNAKA CLEMENT,  
North Dakota State Univ.  
annaka.clement@nds.edu

JEANETTE PIRLO,  
Univ. of Florida  
jpirlo@flmnh.ufl.edu

*Section Chairs*  
Cordilleran:  
CARLIE PIETSCH,  
San Jose State Univ.  
carlie.pietsch@sjsu.edu

North Central:  
CARRIE SCHWEITZER,  
Kent State Univ.  
cschweit@kent.edu

Northeastern:  
JACALYN WITTMER  
MALINOWSKI,  
SUNY Geneseo  
malinowski@geneseo.edu

Rocky Mountain:  
BROOKE LONG-FOX,  
S. Dakota School of Mines & Tech.  
brooke.long@mines.sdsmt.edu

South Central:  
VICTORIA CHRAIBI,  
Tarleton State Univ.  
chraibi@tarleton.edu

Southeastern:  
TOM TOBIN,  
Univ. of Alabama  
ttobin@ua.edu

Cover illustration: Habitus, lateral view of *Microtypus eocenus* n. sp., holotype, male from the Eocene, Yantarny, Kaliningrad Province, Russia. Belokobylskij et al., Fig. 7.

## SUBSCRIPTION INFORMATION

*The Journal of Paleontology* [ISSN 0022-3360] is published bimonthly (January, March, May, July, September, and November) by Cambridge University Press (One Liberty Plaza, 20th Floor, New York, NY 10006) for the Paleontological Society. Members of the Paleontological Society automatically receive electronic subscriptions to the *Journal of Paleontology* and *Paleobiology* as a benefit of membership. Institutional subscriptions can be purchased direct from Cambridge University Press or through any major subscription agent. Print-only, online-only, and bundled print and online prices are all available, and subscription prices are tiered according to institution type and size.

Please contact Cambridge University Press for further details:

### **For customers in North America**

Email: [subscriptions\\_newyork@cambridge.org](mailto:subscriptions_newyork@cambridge.org); Phone: (800) 872-7423, option 4

### **For customers outside of North America**

Email: [journals@cambridge.org](mailto:journals@cambridge.org);

Phone: +44 (0)1223-32-6070; Fax: +44 (0)1223-32-5150

**Downloads** of individual articles are available on <https://www.cambridge.org/core/journals/journal-of-paleontology>.

**Reprints** of individual articles may be ordered. For information on reprints, please contact Cambridge University Press.

**Archives** of previous issues are available on <https://www.cambridge.org/core/journals/journal-of-paleontology>.

**Permissions** All rights reserved. Permissions and reproduction policies, request forms, and contacts are available at: <http://www.cambridge.org/about-us/rights-permissions/>

## ADVERTISING

To advertise in the journal please contact M. J. Mrvica Associates, 2 West Taunton Avenue, Berlin, NJ 08009; Phone: 856-768-9360; Fax: 856-753-0064; Email: [mjmrvica@mrvica.com](mailto:mjmrvica@mrvica.com)

## ABSTRACTING AND INDEXING

Abstracting and indexing information for the *Journal of Paleontology* is available at: <https://www.cambridge.org/core/journals/journal-of-paleontology/information/abstracting-and-indexing>.

## POSTAL INFORMATION

Periodicals postage rate paid at New York, NY, and at additional mailing offices. POSTMASTER: Send address changes in the USA, Canada, and Mexico to: *Journal of Paleontology*, Cambridge University Press, Journals Fulfillment Department, One Liberty Plaza, 20th Floor, New York, NY 10006. Send address changes elsewhere to the *Journal of Paleontology*, Cambridge University Press, Journals Fulfillment Department, UPH, Shaftesbury Road, Cambridge CB2 8BS, England.

Copyright © 2021 The Paleontological Society. All rights reserved.

*Printed in the United States of America*