

THE ANNUAL
OF THE
BRITISH SCHOOL AT ATHENS

No. 57

1962

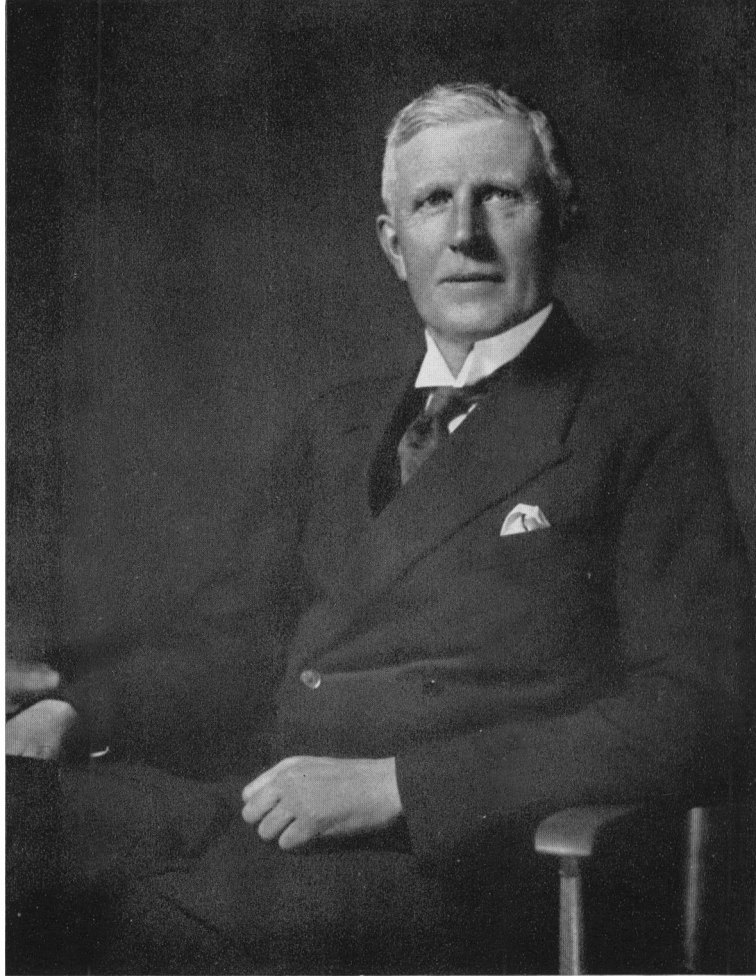
THE BRITISH SCHOOL AT ATHENS

31-34 GORDON SQUARE, LONDON, W.C.1

Published by the Managing Committee

PRICE: FIVE GUINEAS NET

PRINTED IN GREAT BRITAIN
AT THE UNIVERSITY PRESS, OXFORD
BY VIVIAN RIDLER
PRINTER TO THE UNIVERSITY



Photograph Elliott and Fry

MARCUS NIEBUHR TOD

δόγμα φιλελλήνων· πολύπειρον ἐπαινέσαι ἄνδρα
Μάρκον ἀκριβείας ἀφθονίας θ' ἔνεκεν
τῶν δ' εὐεργεσιῶν ἀγανῆ στεφανῶσαι ἀμοιβῆ
ἦν ἂν ἐπίστωνται λῶστα τελεῖν λόγοιοι.
παιδείας γὰρ ἐπ' ἄκρον ἀφιγμένος ἱστορίαισιν
δείκνυσ' Ἑλλαδικῶν ἴχνη ἀμυδρὰ χερῶν,
καὶ πόλεων τὰ κρυφαῖα τεκμαίρεται ἠδ' ἰδιωτῶν,
ὧ γε καὶ ἄφθογοι γῆρυν ἰᾶσι λίθοι.
πρόφρων δ' εὐτάκτου σοφίας μετὰ πᾶσι δίδωσιν
φροντίδ' ἀειμνήστοις ῥήμασι μειγνύμενος.
αἰδοῦνται δὲ νέοι θαλεροῦ πυκίν' ἔργα γέροντος,
ὃς δισσήν ἀρετὴν εἰς μετελήλυθ' ἀνήρ
ὥς τόδ' ἔχειν κάλλιστον· ἐφημερίοις τε βροτοῖσιν
αὐτὸς Ἀληθεία τ' ἐξ ἴσου ἐστὶ φίλος.

K. J. DOVER

THE BRITISH SCHOOL OF ARCHAEOLOGY AT ATHENS

Patron: H.R.H. THE PRINCE PHILIP, DUKE OF EDINBURGH, K.G., K.T., G.B.E.

MANAGING COMMITTEE 1961-62

PROFESSOR C. M. ROBERTSON, M.A., *Chairman*
Appointed by the University of Oxford

PROFESSOR BERNARD ASHMOLE, C.B.E., M.C., M.A., B.LITT., F.B.A., *Trustee*

PROFESSOR R. J. HOPPER, B.A., PH.D., F.S.A., *Trustee*
Joint Editor of the *Annual*

PROFESSOR D. L. PAGE, M.A., F.B.A., *Trustee*

H.B.M. AMBASSADOR AT ATHENS, *Vice-President*

DR. JOAN EVANS, P.S.A., *Vice-President*

SIR JOHN FORSDYKE, K.C.B., M.A., *Vice-President*

SIR CLIFFORD NORTON, K.C.M.G., C.V.O., M.A., *Vice-President*

DR. A. J. TOYNBEE, C.H., M.A., D.LITT., F.B.A., F.S.A., *Vice-President*

R. M. COOK, ESQ., M.A.
Appointed by the University of Cambridge

PROFESSOR P. E. CORBETT, M.A.
Appointed by the University of London

PROFESSOR D. TALBOT RICE, M.B.E., M.A., B.SC., D.LITT., F.S.A.
Appointed by the University of Edinburgh

P. M. FRASER, ESQ., M.C., M.A., F.B.A.
Appointed by All Souls College, Oxford; Representative of the British Academy

M. S. BRIGGS, ESQ., F.R.I.B.A.
Appointed by the Royal Institute of British Architects

J. BOARDMAN, ESQ., M.A., F.S.A.

PROFESSOR J. M. COOK, M.A., F.S.A.

V. R. D'A. DESBOROUGH, ESQ., M.A., F.S.A.

M. F. B. FITCH, ESQ., F.S.A.

W. G. G. FORREST, ESQ., M.A.

D. E. L. HAYNES, ESQ., B.A.

MISS W. LAMB, M.A., SC.D., F.S.A.

SIR RICHARD NOSWORTHY, K.C.M.G., M.A.

Secretary: MISS EDITH CLAY, F.S.A. (until 31 March 1962)

MRS. M. J. THORNTON, B.A. (from 1 April 1962), 31-34 Gordon Square,
London, W.C. 1.

Hon. Treasurer: MICHAEL BAIRD, ESQ., F.S.A.

Treasurer: H. E. KNEEN, ESQ., West Winds, The Parks, Minehead, Somerset

Director

M. S. F. HOOD, ESQ., M.A., F.S.A.

TABLE OF CONTENTS

DAVID M. LEWIS. The federal constitution of Keos	1
A. M. WOODWARD. Athens and the oracle of Ammon	5
D. M. METCALF. The Aegean coastlands under threat: some coins and coin hoards from the reign of Heraclius	14
P. M. FRASER. Two dedications from Cyrenaica (<i>Plate 1</i>)	24
JOHN BOARDMAN. Archaic finds at Knossos (<i>Plates 2-5</i>)	28
D. M. BAILEY. Lamps from Tharros in the British Museum (<i>Plates 6-8</i>)	35
JOHN CHADWICK. Further Linear B tablets from Knossos (<i>Plates 9-20</i>)	46
J. E. JONES, L. H. SACKETT, and A. J. GRAHAM. The Dema house in Attica (<i>Plates 21-31</i>)	75
L. H. JEFFERY. The inscribed gravestones of archaic Attica (<i>Plates 32-41</i>)	115
R. HOPE SIMPSON and J. F. LAZENBY. Notes from the Dodecanese (<i>Plates 42-45</i>)	154
D. HEReward. Inscriptions from the Khersonese	176
W. H. C. FRENCH and D. E. JOHNSTON. The Byzantine basilica church at Knossos (<i>Plates 46-53</i>)	186

FIGURES IN THE TEXT

THE AEGEAN COASTLANDS UNDER THREAT

Fig. Map of coin hoards from the reign of Heraclius	15
---	----

ARCHAIC FINDS AT KNOSSOS

Fig. 1. Bronze 'kothon' from Knossos	29
Fig. 2. Ivory plaque from Knossos	31
Fig. 3. Relief pithos fragments from Knossos	32
Fig. 4. Clay protome from Knossos	33

LAMPS FROM THARROS IN THE BRITISH MUSEUM

Fig. Lamps from Tharros, Sardinia (sc. 1:4)	43
---	----

FURTHER LINEAR B TABLETS FROM KNOSSOS

Figs. (unnumbered). Linear B tablet fragments and sealings	<i>passim</i> 48–71
Fig. (unnumbered). Two Linear A inscriptions from Knossos	74
Fig. (unnumbered). Possible hieroglyphic tablet at Knossos	74

THE DEMA HOUSE IN ATTICA

Fig. 1. The Dema house, excavated remains, plan	76
Fig. 2. General area of the Dema house, map	82
Fig. 3. Corinthian and Laconian tiles (sc. 1:12)	84
Fig. 4. Marble and terracotta louters and bath: profiles and reconstruction	85
Fig. 5. Profiles of skyphoi, bolsals, one-handlers, and bowls (sc. 1:2)	90
Fig. 6. Stamped palmette patterns (sc. 1:1)	91
Fig. 7. Black-glazed, various shapes (sc. 1:2)	92
Fig. 8. Profiles of semi-glazed lekanai (sc. 1:2)	94
Fig. 9. Profiles of semi-glazed lekanis and lids (sc. 1:2)	95
Fig. 10. Amphora profiles (sc. 1:3)	97
Fig. 11. Profiles of kitchen ware and pithoi (sc. 1:2 and 1:4)	98
Fig. 12. Comparative plans of Greek houses	104
Fig. 13. Reconstruction of Dema house	112

THE INSCRIBED GRAVESTONES OF ARCHAIC ATTICA

Fig. 1. Athens, fifth-century walls and gates (based on J. Travlos, fig. 20)	116
Fig. 2. Inscription 1, face (a)	117
Fig. 3. Inscription 1, cutting on top	117
Fig. 4. Inscription 3, top	118
Fig. 5. Inscription 9, top	120
Fig. 6. Inscription 17	123
Fig. 7. Inscription, Kerameikos, seventh century?	124
Fig. 8. Inscription, Kerameikos, seventh–sixth century?	124
Fig. 9. Inscription EM, unnumbered, top	128

Fig. 10. Inscription 23 (from <i>IG</i> i. 465)	130
Fig. 11. Inscription 27	131
Fig. 12. Inscription 39 (from <i>AJA</i> 1903, 292)	135
Fig. 13. Inscription 42	137
Fig. 14. Inscription 46 (Austin, <i>Stoichedon Style</i> , fig. 1)	139
Fig. 15. Inscription 46, sculptor's signature	139
Fig. 16. Inscription 54 (from <i>IG</i> i. 475)	142
Fig. 17. Inscription 56	144

NOTES FROM THE DODECANESE

Fig. 1. Sketch-map of the Dodecanese	155
Fig. 2. Sketch-map of Karpathos and Kasos	158
Fig. 3. Site of Arkaseia	162
Fig. 4. Pália Pí	164
Fig. 5. Sketch-map of Leros, Kalymnos, Kos, and Nisyros	170

INSCRIPTIONS FROM THE KHERSONESE

Figs. 1–10. Inscriptions	<i>passim</i> 176–85
--------------------------	----------------------

THE BYZANTINE BASILICA CHURCH AT KNOSSOS

Figs. 1–2. Knossos basilica. Plan showing the walls and mosaics	<i>between</i> 186 and 187
Knossos basilica. Section A–A across basilica (see Fig. 1)	
Fig. 3. Knossos basilica. Plan showing the location of burials	<i>facing</i> 188
Fig. 4. East–west section through length of basilica	189
Fig. 5. (a) North–south section on the south aisle; (b) north–south section across tower	191
Fig. 6. Peacock lintel from narthex (sc. 1:4)	193
Fig. 7. Carved lintel from narthex (sc. 1:12)	193
Fig. 8. Minoan bowl from 'Bishop's Tomb' (sc. 2:3)	193
Fig. 9. (a) and (b) Glass from the 'Bishop's Tomb' (sc. 1:2, 1:3)	196
Fig. 10. Bracelet from Tomb 1 (sc. 1:2)	205
Fig. 11. Pagan sculpture and inscribed fragments (sc. 1:4)	216
Figs. 12–21. Pottery and small objects.	<i>passim</i> 219–31
Fig. 22. Lamp fragments from cemetery (sc. 1:4)	232
Fig. 23. Glass fragments (sc. 1:4)	233
Fig. 24. Small finds (sc. 1:2)	234

LIST OF PLATES

Frontispiece: MARCUS NIEBUHR TOD

TWO DEDICATIONS FROM CYRENAICA

1. (*a*) and (*b*) Two dedications from Cyrenaica.

ARCHAIC FINDS AT KNOSSOS

- 2–5. Archaic finds at Knossos.

LAMPS FROM THARROS IN THE BRITISH MUSEUM

6. Lamps from Tharros, Sardinia. (*a*) Punic. (*b*) Attic.
7. Lamps from Tharros, Sardinia. (*a*) Attic. (*b*) Greek, mainly Attic.
8. Lamps from Tharros, Sardinia. (*a*) Greek and Roman. (*b*) Profiles, Punic and Attic.

FURTHER LINEAR B TABLETS FROM KNOSSOS

- 9–19. Linear B tablets from Knossos
20. A Linear B inscription (X 0495), two Linear A inscriptions and a possible hieroglyphic tablet from Knossos.

THE DEMA HOUSE IN ATTICA

21. Dema house: site and general views.
22. Dema house.
23. Dema house.
24. Dema house.
25. Dema house: the conduit.
26. Dema house: small finds.
27. Dema house: kraters.
28. Dema house: figured and glazed ware.
29. Dema house: glazed and semi-glazed ware.
30. Dema house: large coarse ware.
31. Dema house: reconstruction sketches.

THE INSCRIBED GRAVESTONES OF ARCHAIC ATTICA

- 32–41. Inscribed gravestones.

NOTES FROM THE DODECANESE

42. (*a*) Pigadhia (Karpathos). Acropolis of Potidaion from the west.
(*b*) Pothia (Kalymnos). Perakastro and Kastro tou Choriou.
(*c*) Kalymnos. Perakastro from the south.
43. (*a–d*) Karpathos.

44. (*a-d*) Karpathos.
45. (*a*) Kasos. Poli, seen from Ofri.
 - (*b*) Syme. Town and Kastro.
 - (*c*) Kastro (Syme). Circuit walls on north-west side.
 - (*d*) Pontikokastro (Syme). South side of Round Tower, with interlocking blocks.

THE BYZANTINE BASILICA CHURCH AT KNOSSOS

- 46-50. The site and the tombs.
- 51-52. Tomb 23, inscription, and sculpture.
53. Miscellaneous finds.