

PGT Digital Imaging...

...ImageCraft™, highest pixel density per displayed image... over 20% more than its competition.

At the touch of a key... micrographs digitized, color enhanced, and processed to provide more data than you ever thought possible.

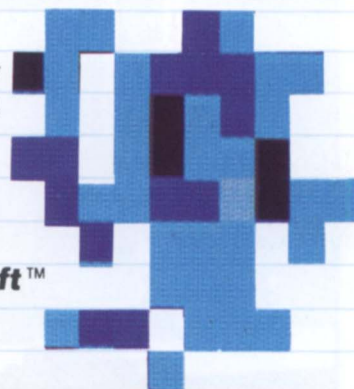
PGT **ImageCraft™**... 400 x 400 pixel image display with immediate access to 512 x 400 pixel images.

MegaPlane™... ultra high resolution imaging display system... features immediate access to 1024 x 800 pixel images, 256 simultaneously assigned colors from 16 million color palette... including 256 true gray levels on monitor and *instantaneous* video refresh.

Image contrast enhancement, automatic area fraction display, instantaneous zoom and roam, sophisticated image comparison capabilities... and many special purpose software options available for a variety of image analysis requirements.

There is a PGT system especially suited to your needs... with EDS X-ray analysis functions, or specifically for image analysis.

Remember these names...
SYSTEM4plus - ImageCraft™
- Ultra - MegaPlane™



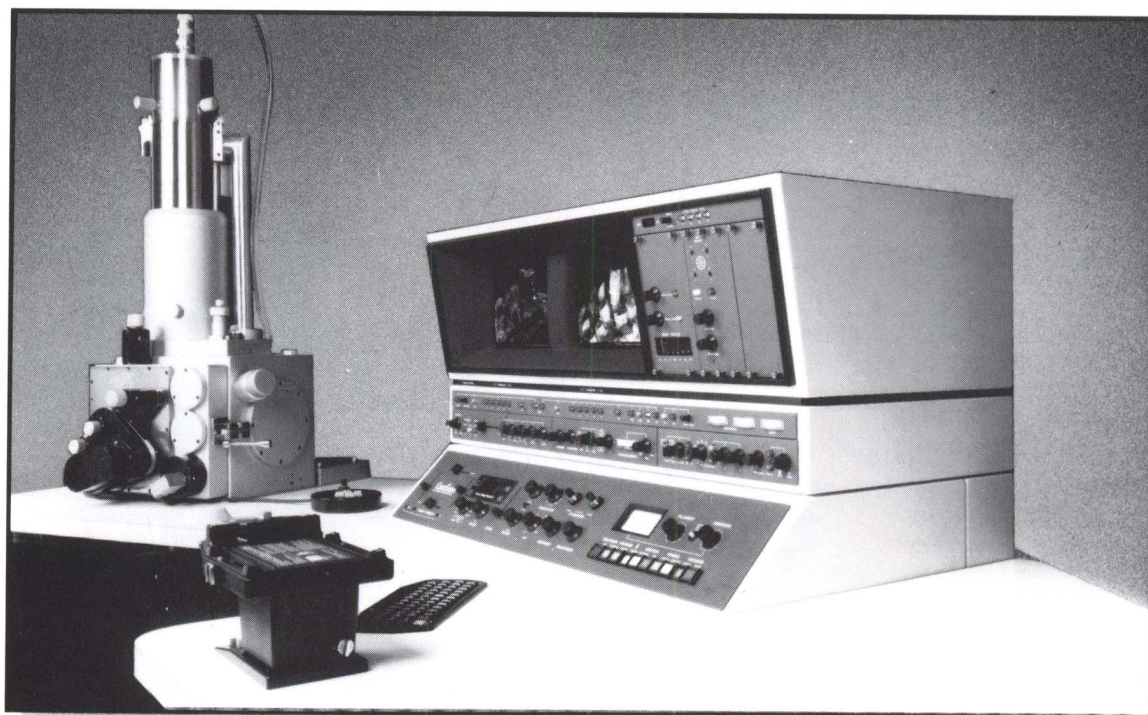
PRINCETON GAMMA-TECH, INC.

1200 State Road, Princeton, NJ 08540 • 609-924-7310 • Telex: (WUT) 843486 GAMMATECH PRIN, (ITT) 4754029 PGT USA
568 Weddell Drive, Suite 1, Sunnyvale, CA 94089 • 408-734-8124

CamScan

Scanning Electron Microscopes

Technical Excellence, Outstanding Quality and Reliable Service.



The CamScan line of advanced research scanning microscopes is the result of extensive programs of design, development and engineering based on a real appreciation of the needs of the microscopist. Nothing has been spared to obtain the highest technical specifications and workmanship.

CamScan Key Features:

LARGE SPECIMEN CHAMBER

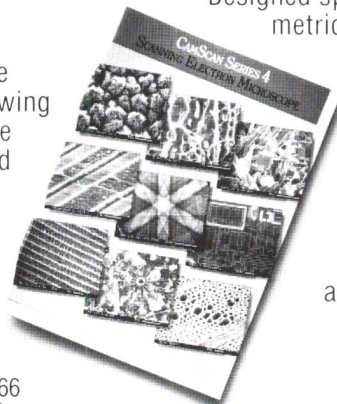
Large enough to house virtually any sample encountered in scanning microscopy. A viewing window and internal illuminator simplify the manipulation of bulky or awkwardly shaped samples.

EUCENTRIC STAGE

The technical superiority of the eucentric stage design provides high stability precision movements with excellent control of position and orientation for specimens of all types and sizes.

MICROANALYTICAL GEOMETRY

Designed specifically to give the optimum geometrical configuration between sample, electron beam and X-ray detectors for accurate quantitative microanalysis.



UNIQUE ERGONOMIC DESIGN

The layout and functions of the microscope controls ensure optimum performance, rapid results and simple operation for all samples.



WEST
6678 Owens Drive
Pleasanton, California 94566
(415) 463-0200 • Tlx 704483

EAST
780 Commonwealth Drive
Warrendale, Pennsylvania 15086
(412) 776-5260 • Tlx 902867

For more information on CamScan Scanning Electron Microscopes, please write for our brochure.

**THIS IS THE LAST ISSUE
OF THE MRS BULLETIN
YOU WILL RECEIVE
UNLESS . . .**

**You attended
the 1985 MRS Fall Meeting in Boston**

or

**You have renewed your membership in the
Materials Research Society for 1986**

**To continue receiving the BULLETIN and additional
benefits of MRS Membership, such as subscription to
Journal of Materials Research, advance notification of MRS
meetings, discounts on MRS proceedings, and more.**

Look for the 1986 dues notice in the mail.

1985 MRS MEMBERSHIP

I am professionally involved in materials science and engineering and I would like to join the Materials Research Society.

Name _____

Title _____

Address _____

City _____ State _____

Zip/Postal Code _____ Country _____

Telephone _____

This address is: _____ Home _____ Institution

_____ Regular membership dues enclosed (\$45.00)*

_____ Student membership dues enclosed (\$15.00)

Students must enclose evidence of university registration

_____ Member subscription to *Materials Letters*, Vol. IV (\$17.50)

_____ Student member subscription to *Journal Of Materials Research* (\$15.00)

_____ Donation \$ _____

TOTAL ENCLOSED \$ _____

*\$25.00 of dues applies to subscription to *Journal of Materials Research*

Return to: Membership Department
Materials Research Society
9800 McKnight Road, Suite 327
Pittsburgh, PA 15237
Telephone (412) 367-3003