

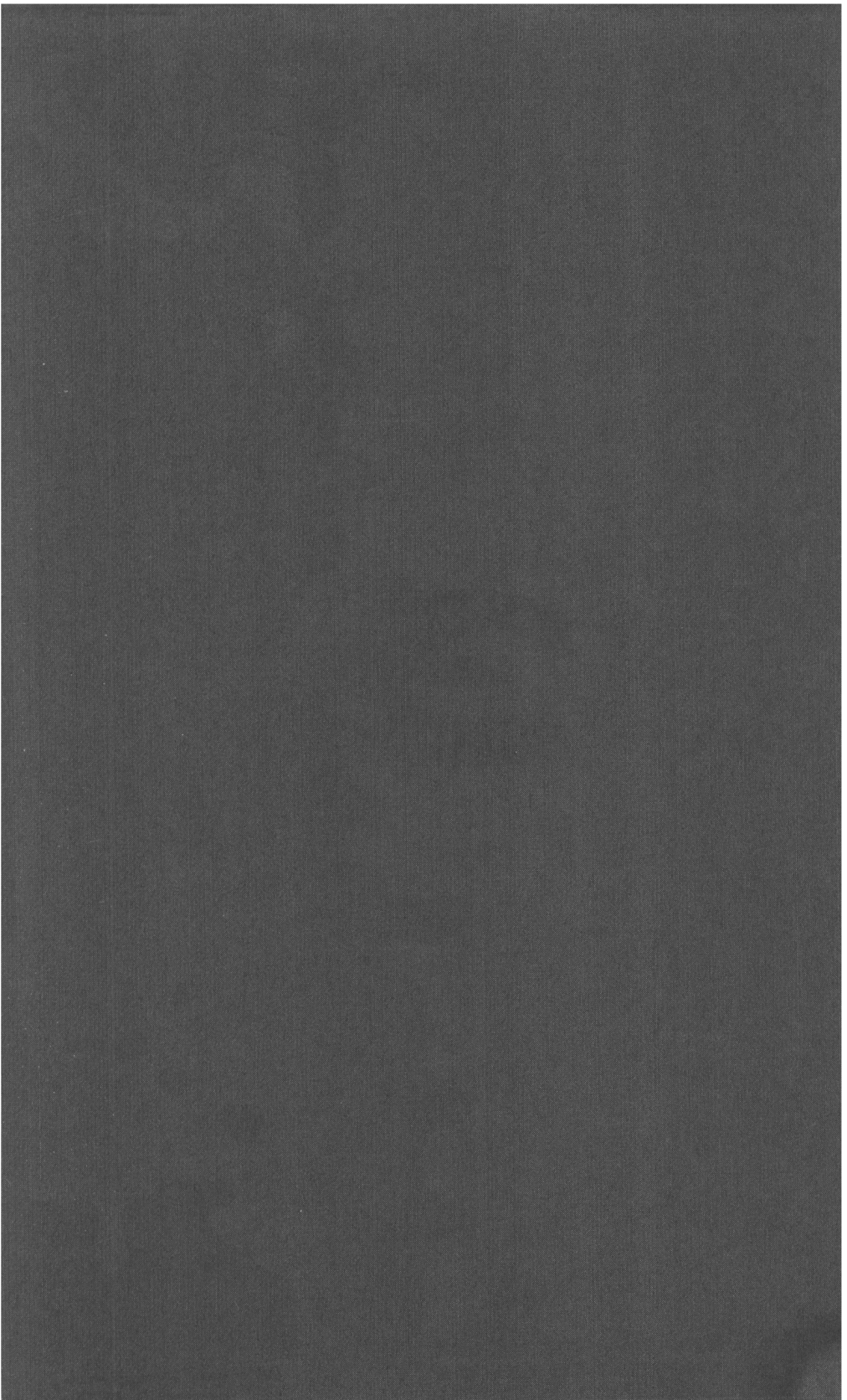
The Geologist: A Popular Illustrated Monthly Magazine of Geology, Volume 3

Samuel Joseph Mackie

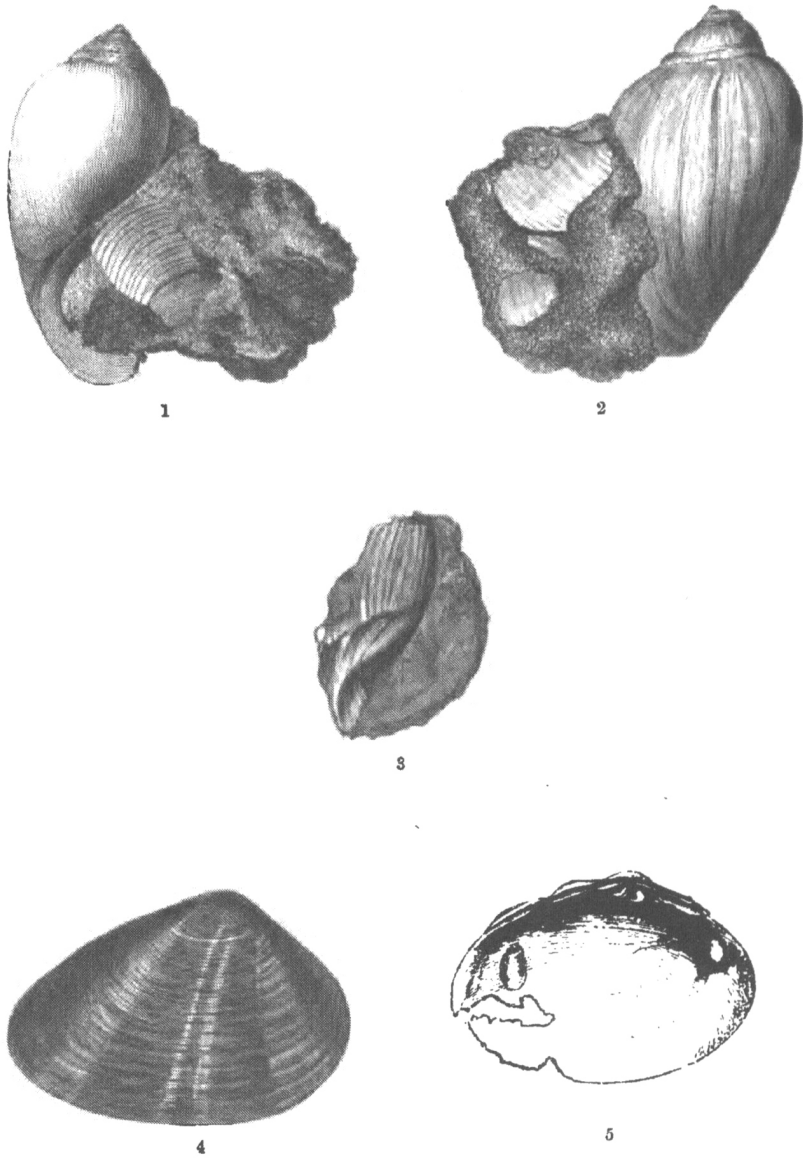
Nabu Public Domain Reprints:

You are holding a reproduction of an original work published before 1923 that is in the public domain in the United States of America, and possibly other countries. You may freely copy and distribute this work as no entity (individual or corporate) has a copyright on the body of the work. This book may contain prior copyright references, and library stamps (as most of these works were scanned from library copies). These have been scanned and retained as part of the historical artifact.

This book may have occasional imperfections such as missing or blurred pages, poor pictures, errant marks, etc. that were either part of the original artifact, or were introduced by the scanning process. We believe this work is culturally important, and despite the imperfections, have elected to bring it back into print as part of our continuing commitment to the preservation of printed works worldwide. We appreciate your understanding of the imperfections in the preservation process, and hope you enjoy this valuable book.



Geol. Per. 15.



PITHARELLA RICKMANI AND CYRENA DULWICHIENSIS.

(Figs. 1 to 3.)

(Figs. 4 and 5.)

In the Collection of F. E. Edwards, Esq., F.G.S.

S. J. Mackie, del.

THE GEOLOGIST;

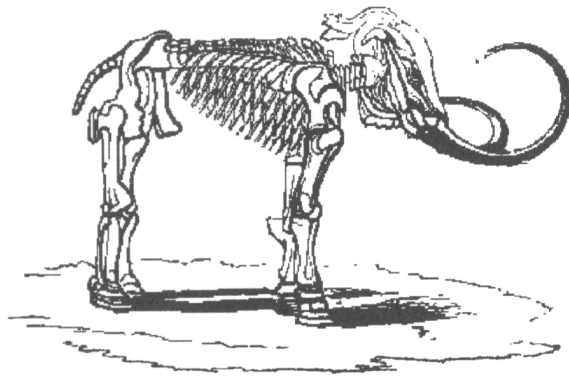
A POPULAR ILLUSTRATED

MONTHLY MAGAZINE

OF

GEOLOGY.

EDITED BY S. J. MACKIE, F.G.S., F.S.A.



LONDON :
"GEOLOGIST" OFFICE, 22, SOUTHAMPTON-STREET, STRAND.

1860.