

Climatic changes cause synchronous population dynamics and adaptive strategies among coastal hunter-gatherers in Holocene northern Europe

Erlend Kirkeng Jørgensen^{a*} , Petro Pesonen^b, Miikka Tallavaara^c

^aDepartment of Archaeology, History, Religious Studies and Theology, UiT—The Arctic University of Norway, 9037 Tromsø, Norway

^bDepartment of Biology, University of Turku, 20500 Turku, Finland

^cDepartment of Geosciences and Geography, University of Helsinki, 00100 Helsinki, Finland

*Corresponding author e-mail address: erlend.k.jorgensen@uit.no (E.K. Jørgensen).

(RECEIVED March 6, 2019; ACCEPTED December 17, 2019)

Abstract

Synchronized demographic and behavioral patterns among distinct populations is a well-known, natural phenomenon. Intriguingly, similar patterns of synchrony occur among prehistoric human populations. However, the drivers of synchronous human ecodynamics are not well understood. Addressing this issue, we review the role of environmental variability in causing human demographic and adaptive responses. As a case study, we explore human ecodynamics of coastal hunter-gatherers in Holocene northern Europe, comparing population, economic, and environmental dynamics in two separate areas (northern Norway and western Finland). Population trends are reconstructed using temporal frequency distributions of radiocarbon-dated and shoreline-dated archaeological sites. These are correlated to regional environmental proxies and proxies for maritime resource use. The results demonstrate remarkably synchronous patterns across population trajectories, marine resource exploitation, settlement pattern, and technological responses. Crucially, the population dynamics strongly correspond to significant environmental changes. We evaluate competing hypotheses and suggest that the synchrony stems from similar responses to shared environmental variability. We take this to be a prehistoric human example of the “Moran effect,” positing similar responses of geographically distinct populations to shared environmental drivers. The results imply that intensified economies and social interaction networks have limited impact on long-term hunter-gatherer population trajectories beyond what is already proscribed by environmental drivers.

Keywords: Synchronicity; Moran effect; Human ecodynamics; Hunter-gatherers; Paleodemography; Maritime adaptation; Fennoscandia

INTRODUCTION

Synchronized demographic and behavioral patterns among distinct and geographically separate populations is a well-known natural phenomenon that has been demonstrated across animal and plant populations. The study of spatial synchrony has thus become a key topic in population ecology. “Spatial synchrony” refers to coincident changes in the abundance or adaptive response of geographically disjunct populations (Liebhold et al., 2004). Three primary mechanisms have been offered to explain such synchrony:

(1) dispersal or migration among populations, (2) trophic interactions with populations of other species that are themselves spatially synchronous or mobile, and (3) spatially correlated environmental influences (Liebhold et al., 2004). This last phenomenon, known as the “Moran effect,” reflects upon the tendency of spatially separated populations to fluctuate in synchrony when exposed to similar environmental conditions (Moran, 1953). The Moran effect is often thought to be the result of synchronous weather or climate influences acting on spatially disjunct populations (Moran, 1953; Koenig, 2002; Rosenstock et al., 2011; Kahilainen et al., 2018).

For prehistoric humans, Shennan et al. (2013) were the first to identify synchrony in ¹⁴C date-based human population proxies across mid-Holocene Europe. This synchrony was attributed to migration and population growth, induced by the introduction of agriculture 8000–6000 cal yr BP.

Cite this article: Jørgensen, E. K., Pesonen, P., Tallavaara, M. 2022. Climatic changes cause synchronous population dynamics and adaptive strategies among coastal hunter-gatherers in Holocene northern Europe. *Quaternary Research* 108, 107–122. <https://doi.org/10.1017/qua.2019.86>

Recently, Freeman et al. (2018) argued that synchronous patterns in ^{14}C time series observed across the globe during the Holocene were the result of intensified networks of trade and migration within continents, while convergent cultural evolution toward more energy-consuming political economies with higher carrying capacities account for global synchrony. However, as Freeman et al. (2018) admit, they omit climate change as the driving force behind the observed synchrony, despite it being the explanation most commonly used in ecology. This is critical, as climate can influence human growth rates either directly (extreme events) or indirectly by affecting environmental productivity and, consequently, food availability. We suggest that evaluating the role of climate change in driving synchronous human demographic and adaptive responses requires analyses sensitive to regionally specific ecological conditions.

Here, we compare Holocene hunter-gatherer ecodynamics in two northern European regions: western Finland and northern Norway. We investigate the role of climate in controlling coastal hunter-gatherer population trends and changes in adaptive strategies between the two regions. We show that population size and adaptive strategies change synchronously between western Finland and northern Norway. These changes coincide with climate changes and consequent changes in food availability. Thus, our results highlight the role of environmental factors in creating spatial synchrony in long-term human population dynamics across space.

REGIONAL SETTING

The data catchment areas of our study are the coasts of northern Troms and western Finnmark Counties, constituting the northwesternmost margin of Norway (69°–71° latitude), and the Ostrobothnian coast in western-central Finland (63°–65° latitude) (Fig. 1).

The study areas occupy northern coastal ecotones while simultaneously being different systems in terms of ecology and geography. These areas are positioned along different aquatic systems: northern Norway is on the oceanic interface of the North Atlantic and the Barents Sea, where upwelling, salinity, and significant tidal actions produce a highly productive coast. Western Finland is adjacent to the more enclosed Gulf of Bothnia in the Baltic Sea, marked by relatively low salinity and minimal tides. Also, the topography of these areas differ: western Finland is a flat continuous coastline, while northern Norway is a rugged, mountainous coastline scattered with islands and deep-cutting fjords.

By the time of the mid-Holocene, the two areas had quite different ecological systems. The Finnish area has a significantly more productive terrestrial ecosystem compared with that of northern Norway, primarily due to latitudinal differences. Major changes occurred in the terrestrial environment during the mid-Holocene, as the previously species-rich mixed forest of the Finnish terrestrial system became increasingly dominated by spruce (*Picea abies*). This turned the forest ecosystem into a modern boreal taiga dominated by spruce (*Picea abies*) and pine (*Pinus sylvestris*) (Seppä et al., 2009a).

A recent compilation of a large set of pollen cores from across northern Norway indicates a patchwork of vegetation cover, structured by both the inland/coast axis and the west/east axis, in which the outer coastal area of northwestern Norway was characterized by birch (*Betula*) forest cover exceeding current conditions (Sjögren and Damm, 2019). This likely impacted the biogeography of key terrestrial mammals with a shift from postglacial large herds of migratory ecotype reindeer (*Rangifer tarandus*) to smaller herds of sedentary ecotype reindeer (*R. tarandus*) (Hood, *in press*, p.23).

Another important factor in area selection is the fact that Fennoscandia hosts archaeological records of continuous hunter-gatherer populations throughout the Holocene. These records demonstrate shared adaptive characteristics between the areas with reliance on marine subsistence technologies at an early stage. What is more, there are some indications of participation in extensive interaction spheres, as evidenced by shared material culture traits such as slate technology, ceramics, rock art, imported amber, and early metal products (Damm, 2006; Nordqvist et al., 2012; Ramstad et al., 2015). However, very little evidence exists to determine the magnitude of interaction between the areas. The assumed connections must therefore be seen as highly tentative, and we stress that there is more evidence indicating separate rather than shared culture-history in these areas.

The areas have some similarities in postglacial colonization history, but also exhibit important differences. Following the deglaciation of the final Pleistocene, coastal areas of the Fennoscandian/Baltic shield became increasingly accessible for colonization by marine flora and faunas. This process is thought to have triggered a significant incentive for humans to colonize the postglacial coastal landscape of northernmost Europe. This entailed a radical economic shift: From terrestrially oriented foraging societies of the late-glacial Ahrensburgian and Butovo/Veretye groups on the Eurasian plain, moving north and west and developing the maritime adaptations quintessential to the Scandinavian Mesolithic (Schmitt et al., 2006; Bang-Andersen, 2012, 2013; Schmitt, 2015; Schmitt and Svedhage, 2015; Dolukhanov et al., 2017). The colonization of Norway at the termination of the Younger Dryas (11,700 cal yr BP) occurred along a coastal route requiring seafaring vessels and the know-how of a marine-oriented economy (Bjerck, 2017). The case is somewhat different in Finland, which was colonized via a terrestrial route. The Finnish case is most in line with the model suggesting maritime adaptations originated in Upper Paleolithic river resource utilization and were later adapted to larger water bodies, allowing people to move into the marine niche on the oceanic coasts (Vasil'evskii et al., 1998; see also; Cziesla, 2007, 2018; Terberger et al., 2013). At the Pleistocene/Holocene transition, most of present-day Finland was submerged due to glacio-isostatic loading, yet the ensuing isostatic uplift rapidly transformed the area from a postglacial coast into a patchwork of rivers, lakes, and wetlands. The archaeological record also testifies to aquatic economies from the very onset. Complex technologies used for aquatic resource exploitation are evident already from the early Holocene, including the

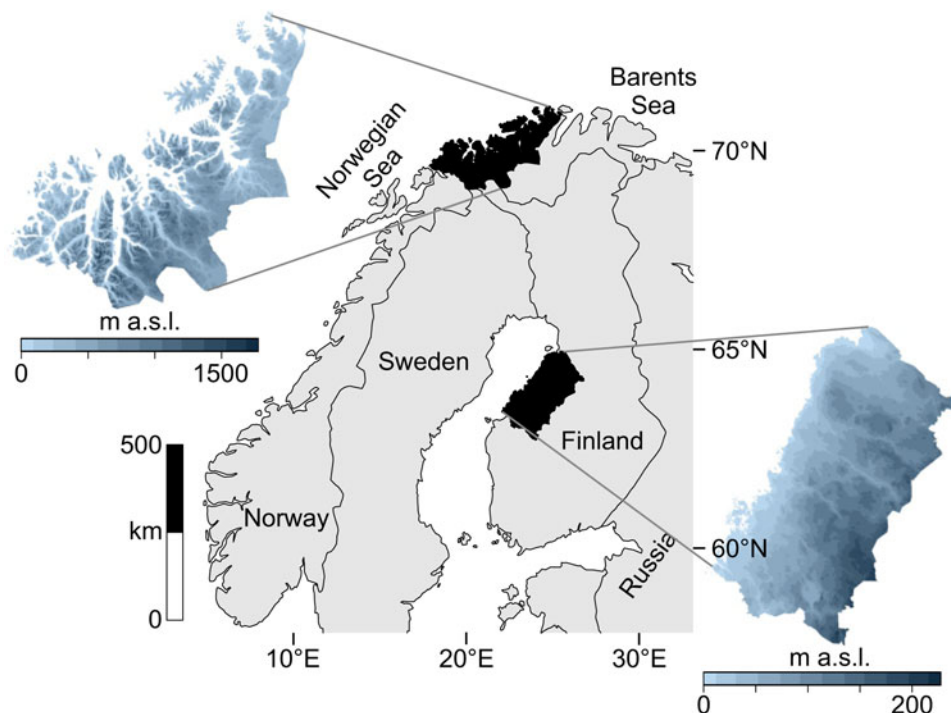


Figure 1. Map of the two study regions within northern Europe.

spectacularly well-preserved Antrean fishnet dated to 10,500 cal yr BP. During the mid-Holocene, massive stationary fishing structures, such as weirs and lath screen traps recovered from multiple estuaries, offer extensive evidence of marine-oriented facilities requiring substantial investment (Koivisto, 2012; Koivisto and Nurminen, 2015; Butler et al., 2019; Groß et al., 2018; Koivisto et al., 2018). The different routes to maritime adaptations underline the comparative relevance of the cases and provide pertinent insight into the evolution of full-fledged maritime adaptations.

Data quality is also a vital factor in area selection. Both areas have been intensively investigated archaeologically, including large-scale excavations and surveys. Together with excellent paleoenvironmental records, the two regions offer robust testing grounds for evaluating changing human ecodynamics.

MATERIALS AND METHODS

Human population size proxies

We reconstruct human population trends in the two areas using temporal frequency distributions of archaeological materials. We consider the time span from the early Holocene colonization at ~12,000 cal yr BP to about 2000 cal yr BP, at which point farming achieved a more permanent foothold and changes in settlement patterns and economy ensued in northern Fennoscandia. Before this, farming made minimal impact on both areas, particularly in northern Norway.

For western Finland, we use the temporal distribution of 754 shoreline-dated sites as the basis of the population reconstruction (Tallavaara and Pesonen, 2018). A gradual and well-

established shoreline displacement due to postglacial isostatic uplift provides high-resolution dating on the basis of elevation above sea level. As with radiocarbon dates, we assume that variation in the number of sites reflects relative changes in past population size. The sites have primarily been identified through LiDAR mapping, and the current sample exclusively consists of sites positively confirmed as archaeological remains by field surveys. Included site types range from open-air sites to pithouse sites of variable sizes to row-house sites and megastructures. Despite a potentially lower chronological resolution, we argue that this approach is justifiable, as it substantially boosts sample size in an area containing few radiocarbon-dated sites. Further, the approach helps overcome investigation biases, as all identifiable site types are included regardless of the presence of radiocarbon dates. Thus, this site-based proxy sidesteps many of the sampling biases inherent in radiocarbon-based population proxies. This approach also takes advantage of the favorable isostatic properties of the area. Western Finland is positioned near the weight center of the Fennoscandian ice cap, resulting in isostatic uplift of more than 200 m over the past 12,000 yr. Given a mostly flat topography, the isostatic rebound of the area provides ideal conditions for high-resolution shoreline dating. Virtually identical trends have been established between the regional site-based reconstruction and the summed probability distribution (SPD), which is based on radiocarbon dates covering the total area of Finland (Tallavaara and Pesonen, 2018). This strengthens the reliability of the site-based proxy.

For northern Norway, the reconstruction of population dynamics is based on the SPD method of radiocarbon-dated site-occupation events (Shennan and Edinborough, 2007;

Williams, 2012; cf. Ramsey, 2017). This method is premised on the proportional relation between population size and datable components of the archaeological record (Rick, 1987; see Haynes, 1969; Kirch, 1980). This so-called dates-as-data premise implies that smaller populations leave behind a smaller sample of archaeologically visible traces compared with larger populations. Major efforts have been made to test this premise (Surovell and Brantingham, 2007; Surovell et al., 2009; Shennan, 2013; Timpson et al., 2014). Following the results in Edinborough et al. (2017), the method has demonstrated its usefulness in reconstructing paleodemographic fluctuations. For the current study, archaeological radiocarbon dates were collected for the coast of northwestern Norway, which contains the densest and most recently produced radiocarbon record in northern Norway. The data set (N = 735) exclusively comprises radiocarbon dates from secure archaeological contexts, made on terrestrial carbon (data set available at: <https://dataverse.no/dataset.xhtml?persistentId=doi:10.18710/AV9R5X>). These have been further vetted for taphonomic, investigative, and sampling biases (Jørgensen, 2018). The dates were then structured into 503 bins of 200 yr to control for overrepresentation of more intensively investigated sites. Further details on auditing measures of the current data set are presented in Jørgensen (2018). Although the population proxies for our two study areas are derived from different source data, we have opted for this strategy, as it produced samples of comparable size.

Paleoenvironmental data

Holocene environmental changes are represented by eight paleoecological and paleoclimatic proxies. We selected available proxies related to the productivity of terrestrial and marine environments and, consequently, to food availability for hunter-gatherers. Somewhat different environmental proxy types represent the two areas. This is the result of regional differences in depositional and geomorphic qualities, as well as unequal conditions for preservation of paleoenvironmental proxy data. The paleoenvironmental proxies discussed in this paper are summarized in Table 1.

Prehistoric human population dynamics in western Finland are compared with: (1) a measure of annual mean temperature, which is a stack of four pollen-based temperature reconstructions across southern and central Finland; (2) the strength and length of the growing season, which is based on organic matter flux in a varved lake (Ojala and Aleinius, 2005; Ojala et al., 2008); (3) Baltic Sea surface temperature (SST) reconstruction, derived from TEX86-paleothermometer measurements (Warden et al., 2017); and (4) Baltic Sea salinity levels (‰) based on the compilation of several proxies (Gustafsson and Westman, 2002). Salinity is important in tracking changes in oceanic versus the enclosed, brackish conditions of the Baltic Sea. This has ecological implications, as salinity levels structure aquatic biogeography and affect the productivity of the Baltic Sea.

For northern Norway, the SST of the North Atlantic Current collected at the offshore shelf break tracks variation in

mixing of warm Atlantic and cold Arctic waters at the mid-Norwegian margin (Calvo et al., 2002). Ocean mixing is a significant factor in structuring marine biogeography and for inferring large-scale oceanographic and environmental conditions. Two proxies of inner coastal aquatic conditions in northern Norway are included, as the fjord biome is of great importance to the human populations in the area. Bottom water temperatures (BWT) of a major fjord system (Malangen fjord) in the study area track changes in the coastal current (Husum and Hald, 2004). In addition, we contribute a new paleoproductivity measure of the same local fjord environment. The fjord productivity proxy is made up of previously unpublished data, courtesy of Jochen Knies at the Norwegian Geological Survey. The percentage of carbonate is used as a direct marker of productivity in the fjord as it relates to the abundance of calcium/chalk-dependent zooplankton, which in turn is the foundation of the marine trophic pyramid. This assumption is justified, as the relative proportion of terrigenous-free (biogenic) carbonate has been shown to be a highly suitable indicator of changes in paleoproductivity in the area (Knies et al., 2003, pp. 1–2; cf. Gardner et al., 1997).

We also include a humification index from the outermost western coast of Norway. The peat humification index is a combined indicator of temperature and precipitation—evapotranspiration—that also reflects changes in terrestrial productivity (Vorren et al., 2012).

Maritime resource exploitation data

To explore potential synchrony between adaptive strategies, population size, and environment, we assembled multiple indicators of marine resource use.

To track changes in the subsistence/adaptive strategies in western Finland, we calculate two closely related measures: the proportion of seal bones in archaeofaunal assemblages in coastal sites (seal NISP (Number of Identified Specimens)/total NISP) and the index of seal bones relative to terrestrial mammals (seal NISP/(seal NISP + terrestrial mammal NISP)) (Grayson, 1984). Although not a direct quantitative measure of seal consumption, we assume that changes in the proportion of seal bones reflect changes in the importance of seals in human diet. As a secondary premise, we assume that such variation indirectly reflects adaptive adjustments following either environmental or technological changes. The archaeofaunal data consist of 37,810 burnt bone fragments from 72 archaeological assemblages across the Finnish coast. These data were extracted from the archives of osteological reports compiled by Pirkko Ukkonen and Kristiina Mannermaa at the Finnish Museum of Natural History and from osteological reports at the National Board of Antiquities. The faunal record was attributed to broad chronological periods based on time constraints given by associated radiocarbon dates or typological artifact attribution: Early Mesolithic (11,000–8500 cal yr BP), Late Mesolithic (8500–7200 cal yr BP), Early Sub-Neolithic (7200–6000 cal yr BP), Middle

Table 1. Climate records employed for paleoenvironmental review.

No.	Site	Tracks ^a	Latitude (°N)	Longitude (°E)	Elevation (m)	Source	Proxy	Function in climate review	Citation
1	Finland Lakes Arapisto, Kuivajärvi, Laihalampi and Nautajärvi	Annual mean temperature	61.3	26.0	136.6	Lake	Pollen, multiple combined	Four pollen-based temperature reconstructions stacked into a mean annual temperature for the Finnish boreal zone	Heikkilä and Seppä, 2003; Sarmaja-Korjonen and Seppä, 2007; Ojala et al., 2008; Seppä et al., 2009b
2	Lake Nautajärvi	Growing season intensity	61.5	24.4	103.7	Lake	Organic matter flux, varved lake	Provides a measure of the environmental growth potential, tracking strength and length of primary production season	Ojala and Alenius, 2005; Ojala et al., 2008
3	Baltic Sea (core 303600)	Baltic SST	56.6	19.2	-175	Marine	TEX86, thaumarchaeotal membrane lipids	SST of the Baltic Sea	Warden et al., 2017
4	Baltic Sea, multiple sites	Baltic salinity	—	—	—	Marine	Salinity, $\delta^{18}\text{O}$, molluscan fauna	Tracks changes in oceanic vs. enclosed, brackish conditions; important for structuring the aquatic biogeography as salinity affects productivity	Gustafsson and Westman, 2002
5	Norway N. Atlantic shelf break (MD95-2011, JM997-948/2A BC)	North Atlantic Current SST	66.58	7.38	-1048	Marine	Alkenones, diatoms, forams, $\delta^{18}\text{O}$.foram	U37K-derived SST of the North Atlantic Current tracking variations in admixture of warm Atlantic and cold Arctic waters at the mid-Norwegian margin	Calvo et al., 2002
6	Fjord Malangen (JM98-1-PC)	Fjord BWT	69.5	18.4	-213	Marine	$\delta^{18}\text{O}$.foram	BWT of inner fjord marine core; tracks changes in the coastal current	Husum and Hald, 2004
7	Fjord Malangen (JM98)	Fjord productivity	69.5	18.4	-213	Marine	Forams, carbonate %	Paleoproductivity measure of the local fjord environment	Knies (previously unpublished)
8	Rystad 1	Effective evapotranspiration	68.24	13.78	40	Peat	humification index, colorimetric	Indicator of temperature and precipitation combined — evapotranspiration — on the outermost western coast	Vorren et al., 2012

^aBWT, bottom water temperature; SST, sea-surface temperature.

Sub-Neolithic (6000–5400 cal yr BP), and Late Sub-Neolithic (5400–3500 cal yr BP).

Due to poor preservation of organic remains, there is no representative archaeofaunal sample to draw on from the Norwegian area, and we had to devise an alternative measure of marine resource use. To map changes in marine resource use, we assembled a “slate index,” premised on the strong affinity between maritime adaptive strategies and the use of slate tools. The slate index tracks the abundance of slate tools relative to other lithic industries, based on the averaged frequencies of slate versus cryptocrystalline lithic materials from a selection of reliably dated site assemblages. The data set consists of 37 securely dated lithic assemblages covering the entire local Stone Age chronology, with more than 22,000 lithic objects. Importantly, most of the assemblages stem from multiphase sites of significant occupation history. This factor helps control for variation in site function. As the ecological properties of a single coastal site are assumed to be more or less stable, any major variation in lithic assemblage composition through time is assumed to reflect changes in subsistence strategies.

Based on the near-universal reliance on slate tools among circumpolar maritime hunter-gatherers (Fitzhugh, 1974), we assume that slate tools provide a reliable indication of maritime resource exploitation. There have been multiple attempts at explaining the strong prevalence and assumed superiority of slate tools for maritime economic purposes (Gjessing, 1953; Dumond, 1968; Ritchie, 1969; Fitzhugh, 1974; Clark, 1980, 1982; Morin, 2004; Graesch, 2007; Dinwiddie, 2014). As a basic premise, we follow several arguments and empirical demonstrations (Clark, 1979; Wilhelmsson, 1996; Nuñez, 1998; Morin, 2004) that slate technologies can reduce handling costs and facilitating mass harvesting of marine resources (*sensu* Madsen and Schmitt, 1998), and thus alter the energy budget and ranking of marine/terrestrial resources. As a result, slate technology could significantly boost food security and survivorship, and hence population numbers, among maritime hunter-gatherers. In northern Norway, slate tools have an almost exclusively coastal distribution, supporting our assumption that slate tools were used primarily as a maritime technology and thus are a relevant proxy for marine resource exploitation. Despite lower sampling density of inland sites potentially contributing to this picture, a review of existing data suggests two patterns: (1) There is literally no evidence for slate tool production in the interior, indicating import (Hood, 1992, p. 521). (2) In the rare cases of locally procured material, inland slate tools appear to be of a much more silicified raw material and subject to a different reduction sequence, occasionally even made by recycling greenstone tools (see Rigajokka site [Helskog, 1974, pp. 4–5]) — thus not really slate at all.

RESULTS

Figure 2 shows the reconstructed population dynamics/trajectories for northern Norway and western Finland and reveals a clearly synchronous pattern between the two regions. A

major feature in both reconstructions is the prominent boom-and-bust cycle between 6500/6000 and 5000 cal yr BP. However, in northern Norway the highest population levels apparently occur ca. 300 yr earlier than in western Finland. In addition to this major population boom-and-bust, the population proxies further indicate minor, synchronous declines at 8200 and 7000 cal yr BP.

Figure 3 further shows a correspondence between long-term human population dynamics and environmental variability in both areas. In the Finnish data set, proxies covering both marine and terrestrial productivity show increasing trends culminating around 6000 cal yr BP, concurrent with the prominent population peak (Fig. 3b–e). This is particularly evident in the marked correspondence between the reconstructed population trend, growing season intensity (Fig. 3c), and the Baltic Sea SST (Fig. 3d). The subsequent population decline coincides with declining late Holocene productivity (see also Tallavaara and Seppä, 2012). Furthermore, population dips observed in both areas at around 8200 and 7000 cal yr BP coincide with shorter-duration downturns in temperature and growing season intensity (Fig. 3b–d).

The pattern is similar in the Norwegian study area, where marine proxies (Fig. 3i–k) show peaking SSTs and marine productivity around 6000 cal yr BP. The North Atlantic Current conveyed higher quantities of warm Atlantic water during the mid-Holocene and the coastal water temperature and marine productivity peaked in the major fjord system within the study area (Fig. 3i). This indicates a mild climate with increased Atlantic water in the fjord system that drove the production of carbonate (either produced *in situ* or transported with the Atlantic water).

In accordance with the Finnish data, temperatures and productivity declined after 6000 cal yr BP. The evapotranspiration reconstruction (Fig. 3h) shows a slightly different pattern, as the highest values occur between 7500 and 6500 cal yr BP. Nevertheless, very stable conditions are recorded around the 6000 cal yr BP population peak, while a general climate shift toward highly variable conditions occurred with the transition to the late Holocene.

In northern Norway, the population decline at 8200 cal yr BP coincide with the Storegga tsunami, caused by the massive submarine landslide in the Norwegian Sea (Romundset and Bondevik, 2011). Furthermore, the 7000 cal BP downturn corresponds to the Tapes transgression (Sørensen et al., 1987; Romundset et al., 2011). Thus, taphonomic loss of archaeological material may be responsible for the declines in the Norwegian population proxy (see also Jørgensen, 2018, 5). However, this is most likely an insufficient cause, as the population declines at 8200 and 7000 cal yr BP perfectly mirror the Finnish settlement data, in which no such taphonomic loss is observed. This suggests that these specific declines in northern Norway most likely are actual demographic events. Although low amplitude, these apparent population dips correspond to a hiatus in settlement sites in Finland and reduced site numbers in Norway.

Considering the precise synchrony of these events between western Finland and northern Norway, it is of interest that the

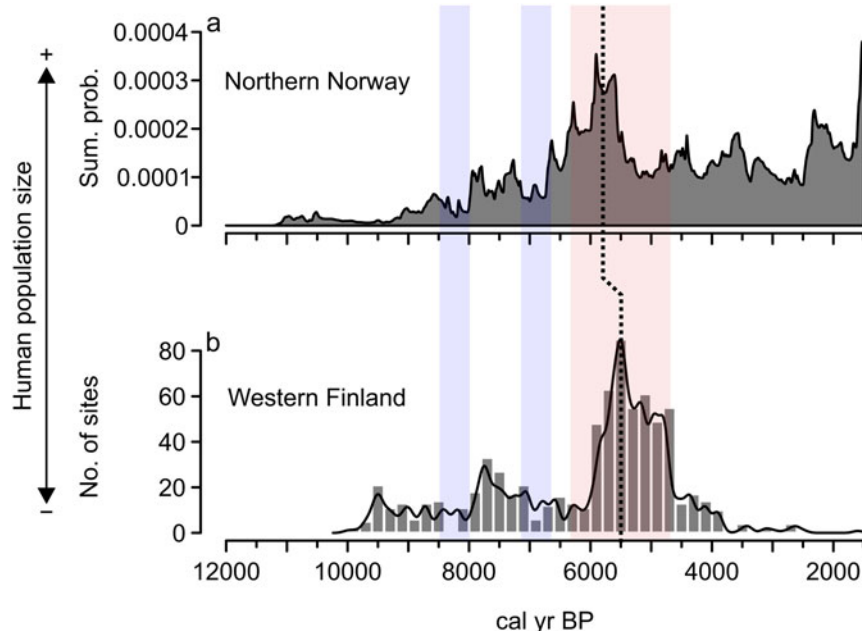


Figure 2. Comparative figure of reconstructed population trends of the two areas. Blue bars mark synchronous, negative fluctuations. Red bar marks synchronous, positive fluctuation. Dotted, vertical line illustrates the lag in timing of the most significant population cycle between the areas.

main population event appears to occur slightly earlier in northern Norway, with a more gradual buildup and more abrupt collapse compared with the Finnish population cycle. The slight variation in dating of these events may be the result of the methods used to reconstruct population dynamics. This has been indicated previously, as a similar age shift in the highest population levels between different population proxies has been observed in the Finnish data (Tallavaara and Pesonen, 2018). Another possibility is that the timing of the main population cycle corresponds to different timings of the most favorable environmental conditions in the separate areas. This is supported by the identification of a latitudinal gradient in the timing and duration of the peak Holocene thermal maximum occurring earlier in the higher latitudes of Fennoscandia (Eldevik et al., 2014, p. 228). Future efforts should aim at discriminating between methodological and climatic effects in explaining this lag, as well as further issues of data resolution.

In addition to the correspondence between population and environmental proxies, proxies indicating marine resource use also correlate with population and environmental proxies in both areas. Marine resource use increases along with increasing population size and environmental productivity until around 6000 cal yr BP and declines as population size and productivity proxies decrease. The Finnish archaeofaunal record (Fig. 3f) shows that during the boom phase of the mid-Holocene population event, seal bones make up more than 70% of the coastal archaeofaunal assemblages. The trend of seal exploitation intensity corresponds to both the growth and decline phases of the population trajectory.

In Norway, the use of slate intensified from 7000 cal yr BP and became the dominant lithic industry by the time of the

population peak (Fig. 3l). By this time, slate concentrations often constituted as much as 80% of coastal assemblages. We assume that this reflects a change in adaptive strategies toward more intensified use of marine resources in the region. A shift away from slate in favor of a more expedient technology based on local quartz occurred simultaneous with the population decline. Slate was still important for some time after the 5500 cal yr BP population decline, but the slate component is reduced from 70%–80% to about 30%. In addition to the slate index, several other characteristics of the Norwegian archaeological record support the idea of increased marine resource use during the population boom. From 7000 cal yr BP, larger coastal sites consisting of multiple pit houses emerge. Despite there being some indications of pit-house construction occurring before this period, this represented a marked change in settlement longevity (Damm et al., 2019; Gjerde and Skandfer, 2018), indicating increased locational investment in coastal sites and a shift in coastal settlement pattern and organization. Furthermore, recent investigations of differences in coast and inland human presence clearly demonstrate an almost complete lack of inland occupation concurrent with the major population peak at the coast (Jørgensen and Riede, 2019; Hood et al., *in press*). This corroborates the previous impression that major population packing occurred on the coast and that activity in the interior was minimal at this time (Hood, 2012). Given the significant difference in magnitude between inland and coastal settlements, packing does not seem a sufficient explanation. We suggest actual population growth followed coastal packing, although this is in need of further enquiry.

Highlighting this, the archaeological and rock art records suggest technological and organizational intensification of

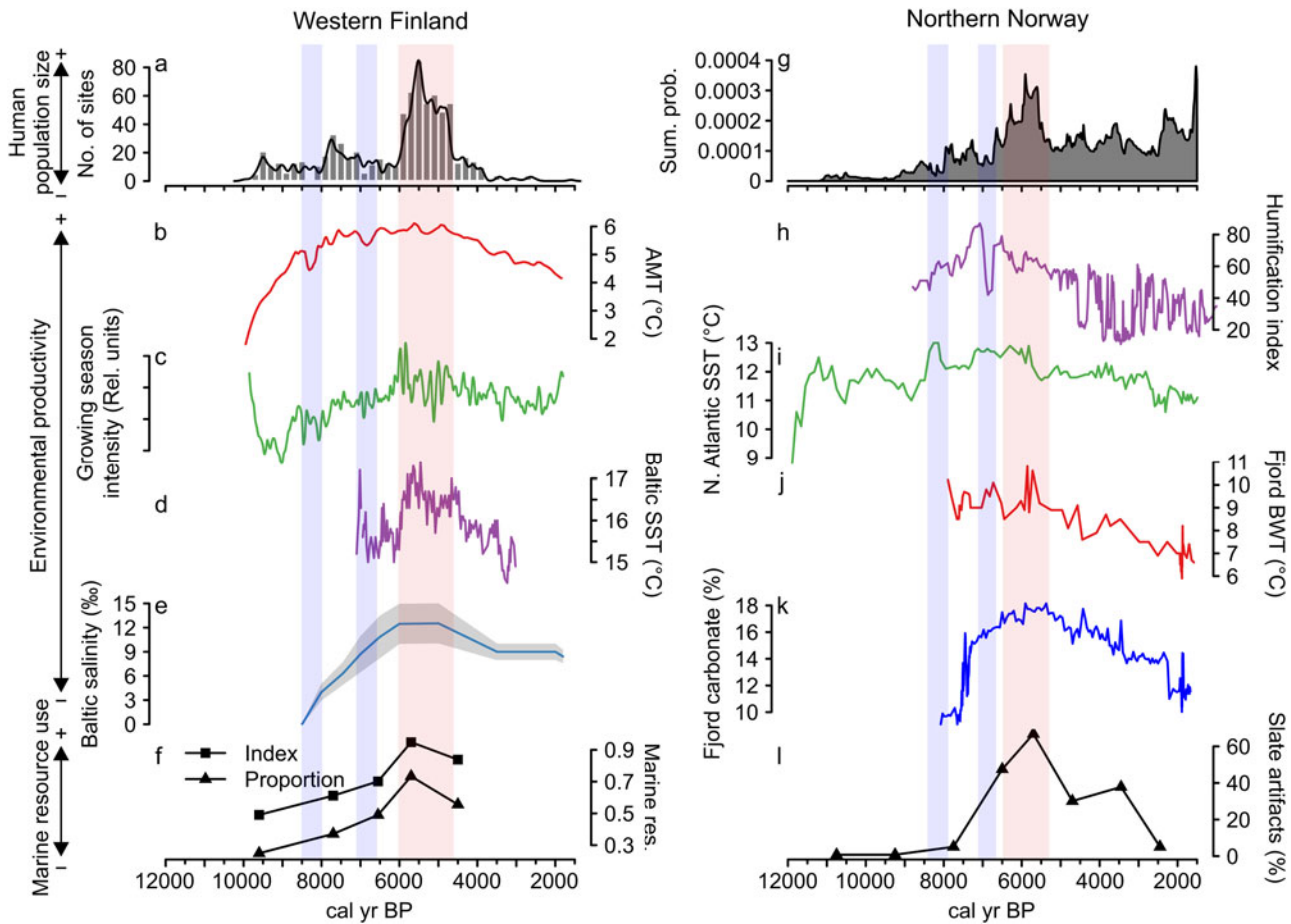


Figure 3. Combined figure of reconstructed population trends, climate proxy comparisons, and marine resource exploitation indicators: (a) Finnish area population reconstruction; (b) Finnish area annual mean temperature (AMT); (c) Finnish area growing-season intensity; (d) Baltic Sea surface temperature (SST); (e) Baltic Sea salinity; (f) index and proportion of seal bones in Finnish faunal assemblages; (g) Norwegian area population reconstruction; (h) Norwegian evapotranspiration; (i) North Atlantic coastal current temperature (SST); (j) Norwegian fjord bottom water temperature (BWT); (k) Norwegian fjord productivity (carbonate %); and (l) proportion of slate tools in coastal, northern Norwegian lithic assemblages.

marine resources through the introduction of more efficient hunting/processing tools and (most likely) cooperative hunting strategies (Gjerde, 2018). Dietary investigations of the only mid-Holocene human individual currently known from northern Norway (Måløy Island) demonstrate a spectacularly high intake of marine protein (Günther et al., 2018, S1, 12). Discriminating the isotopic signature of marine mammal protein from that of migratory cod is difficult due to comparable trophic levels (Schulting et al., 2016), but migratory cod is by far the most dominant species in the region’s faunal record during the time of the population boom (Olsen, 1967; Utne, 1973; Engelstad, 1983; Renouf, 1989). Tentatively, this may indicate adaptive adjustments toward lower-ranked fish resources. Systematic diachronic sampling of biochemical dietary proxies may help resolve these issues in the future.

DISCUSSION

Our main finding is the clear spatial synchronicity in demographic trends and adaptive strategies between two

geographically separate human populations. Our results also strongly suggest that this synchronicity is related to the variability in both terrestrial and marine productivity, which themselves are correlated between the two areas. While the details of these human ecodynamics and the pathways toward increased populations and maritime adaptations differ between the two focus regions, the outcomes are comparable. This suggests that the long-term demographic trajectories in both areas were ultimately regulated by climate and its downstream effect on both terrestrial and marine productivity and hence food availability for hunter-gatherers. The high productivity of the mid-Holocene would have increased the environmental carrying capacity, and in concert with highly stable climatic conditions, offered unprecedented potential for human population growth. This seemingly mechanistic climate forcing of human populations is further supported by the synchronous decline in population numbers and environmental productivity after 5500 cal yr BP, as well as by short-term declines at 8200 and 7000 cal yr BP. Thus, our results apparently demonstrate Moran effects in action among

human populations. The implication being that climate has the potential to synchronize long-term human population trajectories among foraging economies. Future research would need to investigate to what extent this relation also holds for food-producing populations.

Although our results suggest that climate is the most likely explanation for the spatial synchrony between the northern Norwegian and western Finnish hunter-gatherer populations, other mechanisms may still be in play. The trend correspondence between population size, climate, and adaptive strategies highlights the more generalized problem of what should be ascribed causal primacy among demographic, environmental, and technological factors in bringing about synchronous adaptive strategies: Did marine resource exploitation vary independently of population size, or did the maritime specialization result from changes in population size, thus being density dependent? The latter option fits the concept of marine resources becoming attractive only when population packing restricts terrestrial hunting capabilities, creating an imbalance between human population growth and its (assumed) preference for a terrestrial resource base (Binford, 2001, pp. 188, 210; Kelly, 2013). This is thought to follow from the high handling and initial investment costs in aquatic resource exploitation in order to turn a profit, exemplified by the development of boats, specialized fishing equipment and marine hunting gear, as well as bulk processing and storage (Osborn, 1977; see also Yesner et al., 1980; Steffian et al., 2006; Fitzhugh, 2016). Yet maritime intensification would also require some other factor responsible for the initial population growth necessary to achieve sufficient population packing to mitigate the higher investment costs.

In our case, however, this seems problematic. First, human population growth and marine resource exploitation appear to increase alongside a coupled marine–terrestrial productivity increase. One might point to the significantly fewer trophic levels in high-latitude, terrestrial ecosystems as a possible limitation to terrestrially based human population growth (cf. Steele, 1985; Carr et al., 2003; Steele et al., 2019). The abundance of ungulates is strictly regulated by density-dependent mechanisms in boreal forests (Bergerud et al., 2012, p. 102), and is arguably less resilient in the face of human overexploitation than marine resources (Minc and Smith, 1989; Gunderson, 2000). It is therefore not clear whether continued terrestrial growth results in a linear increase in resource abundance relevant to human economic exploitation. This is an unresolved issue for future research to consider, yet current data do not support scarce terrestrial resources as the driving factor of the regime shift in marine exploitation. Further lacking support is the possibility of a significantly earlier terrestrial productivity peak driving the shift toward intensified marine economies (particularly in light of a wider range of terrestrial proxies from northern Norway [Balascio and Bradley, 2012; Wittmeier et al., 2015; Sjögren and Damm, 2019]). Second, the intensity of marine resource use appears to decline along with declining terrestrial (and marine) productivity. Third, if marine resources are secondary to terrestrial resources, it would make it

difficult to explain how aquatic resources could support the population growth observed in our data or how some of the highest population densities in the ethnographic record are found among maritime-adapted hunter-gatherers. For now, we cannot resolve the causal relationship between technological change and population growth. The fact that increase and decrease of marine resource use follow the trends in environmental productivity nevertheless suggests that adaptive changes in our study areas were ultimately subordinate to climate changes.

An alternative to endemic population growth in ecological terms is dispersal between populations, which is another common factor causing spatial synchrony and may pertain to our case as well, for example, through source-sink dynamics (Kawecki, 2004). Agriculture was broadly adopted across northern parts of continental Europe, southern Scandinavia, and the British Isles ca. 6000 cal yr BP. This created an unparalleled population boom roughly synchronous to the pattern observed in the population proxies from western Finland and northern Norway. Intuitively, this might suggest that the mid-Holocene population peak in our study area relates to agricultural expansion, either directly through incoming farmers contributing to the population growth or indirectly by displacing hunter-gatherers into northern “foraging refugia,” as suggested for central Europe (Silva and Vander Linden, 2017). The direct influence of farmers is problematic, however, as solid evidence for agriculture in our study areas is significantly younger than the 6000 cal yr BP population event (Sjögren, 2009, p. 707; Sjögren and Arntzen, 2013; Lahtinen et al., 2017; cf. Mökkönen, 2009). Indirect influences of agriculture are equally problematic. First, the hunter-gatherer population in northern Norway was already growing some 500 yr before agriculture was introduced to southern Scandinavia. The same pattern of pre-agricultural population growth is evident when reviewing the population reconstruction of Holocene Finland in its entirety (Tallavaara et al., 2010; Tallavaara and Seppä, 2012). Second, displacement of hunter-gatherers from south to north would neither explain the remarkable population decline after 6000 cal yr BP or short-term declines at 8200 and 7000 cal yr BP.

In the case of observed synchronicity among human populations, an additional synchronizing factor of social interactions through trade and networks has been proposed (Freeman et al., 2018). The dissemination of improved subsistence technologies could tentatively drive synchronous demographic and adaptive strategies within our study areas. If so, cultural diffusion might facilitate the observed shift in marine exploitation regime while also contributing to population growth. This is particularly pertinent for two technological industries in the area: slate tools and early pottery.

The slate index (Fig. 3i) demonstrates strong correspondence with population dynamics in Norway. Assuming that slate tools are superior in marine resource processing, one might expect slate industries to be of comparable importance among the coastal population of the Finnish area. No such quantitative data set or overview for Finland currently exists. However, there are some similarities in slate technology that

may suggest social networking in action between Finland and Norway (cf. Äyräpää, 1950; Huurre, 1983). Such is demonstrated by the long (100–150 mm) and slender (10–15 mm) Pyheensilta/Nyelv lance points occurring in both areas. A review of a large set of lance points, including a depot containing points at various stages of completion (Hesjedal et al., 1996, p. 70), demonstrates remarkable standardization in production technique and morphometric qualities. The standardized breadth and hafting characteristics of Pyheensilta points, as well as the frequent resharping of broken distal ends, reflect optimal characteristics for effective marine hunting. Maritime technologies are strongly associated with multi-component and replaceable components, given the complexity of hunting on water and the need for quick replacement/repair of hunting gear—a “maintainable” characteristic within an otherwise mostly “reliable” technology (sensu Bleed, 1986). We therefore suggest that the Pyheensilta/Nyelv lances provide a telling example of shared marine subsistence technology. We equally maintain that the adoption of common technologies followed similar adaptive strategies to shared environmental conditions.

The other significant change with potential ramifications for the synchronous mid-Holocene population and marine boom-and-bust cycles is the introduction of ceramic technology. Ceramics dispersed throughout northern and eastern Fennoscandia around 7200 cal yr BP in the form of Early Comb Ware—concurrent with the uptake of slate technology in northern Norway. The demographic impact of ceramic technologies is, tentatively, the enhancement of the nutritional uptake of various foodstuffs through cooking, which may reduce child mortality (Jordan and Zvelebil, 2010, p. 54). Interestingly, the beginning of pottery production in our study areas roughly coincides with the beginning of the mid-Holocene population growth and increase in marine resource use proxies, when Finnish sites (<6000 cal yr BP) are characterized by large quantities of pottery (Nuñez, 1990; Pesonen and Leskinen, 2009). Although it has been suggested that the uptake of pottery was related to the intensification of marine resources, lipid analyses of food crusts on pottery walls suggest a wide range of resources were processed in the vessels (Cramp et al., 2014; Pääkkönen et al., 2016; Papakosta and Pesonen, 2019).

Crucially, major discrepancies in the uptake and maintenance of ceramic technologies in the area go against subsistence technologies as a causal factor in the observed synchrony. In Finland, pottery was in use throughout prehistory, despite the reduced importance of marine resources and the population decline after 5000 cal yr BP. In northern Norway, however, pottery did not disperse beyond the very easternmost region and was likely a short-lived effervescence based on the short duration and small number of ceramics recovered, with a complete lack of later Comb Ceramic phases (cf. Skandfer, 2003; Hood and Helama, 2010). There are potential functional reasons for this discrepancy, beyond the greater geographical proximity of the Finnish area to dispersive centers of ceramic technology in Eurasia. The eco-setting of western Finland, which was likely more

conducive to year-round habitation, in combination with the evidently strong emphasis on estuarine/riverine fisheries, meant that populations could benefit from ceramics for bulk processing and storage. In Norway, there is to date no evidence to support surplus production of riverine/estuarine resources throughout the Stone Age (see Engelstad, 1984; Renouf, 1986, p. 10). However, mass processing and storage through passive technologies such as preservation through air-drying of stockfish has deep roots in Norway (Perdikaris, 1999; Star et al., 2017). The climatic conditions required for such preservative techniques are very specific to the northern Norwegian coast and are not met in the Finnish area. Although archaeologically elusive, we see no reason why the basic innovation of leaving fish to dry by itself would not have been practiced already during the mid-Holocene. If so, the appeal of pottery may have been negligible to the Norwegian population.

We cannot exclude the effects of migration, social interactions, or cultural diffusion. It is conceivable that the adoption of new and potentially improved subsistence technologies occurring simultaneously across northern Europe contributed to the growth phase of the 6500/6000 cal yr BP population cycle. The explanatory power of subsistence technology, however, is undermined by the fact that the population decline occurred independently of changes in subsistence technologies in our study areas and by the fact that both population growth and decline phases coincided with environmental changes. We therefore believe that the observed synchronicity in the long-term population dynamics is better explained by climate-induced variability in environmental productivity acting over large areas, albeit at much larger temporal scales than typically observed in ecological research. This result is at odds with the conclusion of Freeman et al. (2018), who found that environmental variability made no discernible impact on population synchrony. Instead, they suggested that societies dependent on organic sources of energy appear no more synchronous with solar energy fluctuations than fossil fuel-based economies. However, their conclusions are hampered by the use of sunspot data as a measure of environmental variability. Although solar energy is the primary driver of Earth's climate, the influence of solar activity cycles on climatic variability appears to be limited at best (George and Telford, 2017; Schurer et al., 2014; Telford et al., 2015; Turner et al., 2016).

Instead, net primary productivity (NPP) is the crucial driver of energy availability for the immediate-return, organic economies most typical of hunter-gatherers (Tallavaara et al., 2018), as opposed to economies reliant on stored energy reserves (Kander et al., 2013). NPP is controlled by temperature and precipitation, which can be correlated across distances of up to 5000 km, but not globally (Koenig, 2002). Therefore, there is no justification for using any single record of climate or energy availability, such as Greenland ice cores or sunspot data, when analyzing synchrony among prehistoric populations. In addition, taphonomic loss of archaeological material must be taken into account, as the exponential-like shape prevalent across the mean trends of human proxy

records may well be influenced by taphonomic processes (Surovell and Brantingham, 2007; Surovell et al., 2009).

Consequently, Freeman et al. (2018) do not properly address environmental variability or energy availability as a potential driver of synchrony. However, they demonstrate that spatial synchrony decreases with distance between proxy records. Importantly, the adjacent U.S. states Arizona and New Mexico could make for a convincing case in which synchrony is best explained by social interaction and cultural diffusion. However, geographical affinity also implies being subjected to similar environmental parameters. Without further investigation of archaeological and environmental records at the regional scale, spatial proximity is not in itself a sufficient condition to come to a conclusion about the causes of synchronicity. We therefore reiterate Koenig's (2002, p. 288) argument, stating that "patterns of spatial autocorrelation in environmental factors should be carefully considered before concluding that synchrony in any particular system is driven by some factor beyond environmental correlation."

Despite some indications that both foraging and early farming communities were equally susceptible to climate change (Bevan et al., 2017; Warden et al., 2017), hunter-gatherer populations are generally assumed to be more directly controlled by NPP (Tallavaara et al., 2018). Still, hunter-gatherers relying on marine resources may take a hybrid form through delayed-return systems, as bulk processing and storage of energy for lean-season consumption is a common characteristic of many northern, maritime groups (Fitzhugh, 2016). Such delayed-return economies help overcome the limitations imposed by the direct consumption characterizing organic economies. Either way, the archaeological record suggests that the maritime adaptations under study could only mitigate low-amplitude annual variations and at best delay specific returns on an interannual scale. This is not sufficient to significantly boost carrying capacities or mitigate increased variation in resource abundance like modern economies, which are basically extreme delayed-return systems relying on nuclear or fossil fuels (and therefore unsuitable as a comparative case). The limited and short-term mitigation capabilities of pre-industrial economic systems in significantly delaying returns would explain the inability of the populations to avoid decline along with reduced environmental productivity before 5000 cal yr BP.

It seems that convergent cultural evolution toward more energy-consuming economies becomes important *after* the adoption of intensified agriculture relying on active niche construction and yielding reliable surpluses. Consequently, we suggest that intensified economies and social interaction networks have limited impact on long-term hunter-gatherer population trajectories beyond what is already proscribed by external, environmental drivers.

CONCLUSION

This paper reviewed environmental productivity in relation to subsistence strategies in aquatic settings to unpack the drivers

of synchrony between separate human populations. We presented a case study of two northern European subregions and demonstrated significantly synchronous trends across demographic, adaptive, and environmental parameters. Based on an evaluation of different hypotheses, we suggested that the synchronous human ecodynamic trends across Holocene coastal Fennoscandia were a result of shared variability in environmental productivity. Considering that the population trajectories of the two separate areas display remarkable synchronicity and that these follow attendant climate variability in a lockstep manner, the results lend support to the notion that changes in environmental productivity more or less directly induce changes in hunter-gatherer population size. The peak in productivity during the mid-Holocene would have drastically increased the environmental carrying capacity and so provided unprecedented human demographic growth potential. In addition, the long-term stability of the environment during the mid-Holocene may also have been a contributory factor to the observed human ecodynamics, dampening the amplitude of fluctuations that might otherwise be difficult to mitigate with short-duration, delayed-return, risk-reduction measures (Riede et al., 2018).

Our results further demonstrate that major economic changes correspond to demographic and environmental dynamics as evidenced by a suite of marine resource exploitation proxies. It is striking that both populations developed similar adaptive strategies, relying heavily on marine resources. Unpacking the causal mechanisms behind this regime shift toward intensive marine exploitation is beyond our ability at this point. The possibility that population growth was driven primarily by a change in subsistence technology, however, is undermined by the fact that the population decline apparently occurred independent of changes in subsistence technologies in our study areas and by the fact that both population growth and decline phases coincide with environmental changes. More detailed technological investigations are needed in order to properly understand these relations.

Future research should aim at establishing the extent to which the mid-Holocene productivity increase was coupled between marine and terrestrial environments and determining the human implications of a potential imbalance in marine versus terrestrial ecosystem responses to large-scale climate change. If the productivity increase was actually stronger in the marine environment, it may provide a working hypothesis as to why we observe economic, technological, and social-organizational shifts in mid-Holocene northeastern Fennoscandia. However, the paleoproductivity proxies presented here suggest a coupled response between marine and terrestrial ecosystems.

Another venue for further exploration is potential threshold effects operational in maritime adaptations. It is conceivable that the profitability of marine resource exploitation increases nonlinearly, given all its costs (high handling and initial investments), whenever marine productivity increases above some critical level. The pathways responsible for steering ocean-atmospheric interactions are multifaceted

(Wunsch, 2005; Yu and Weller, 2007) and may imply more complex climatic drivers of marine productivity compared with terrestrial productivity (Bromley et al., 1967; Behrenfeld et al., 2006; Meehl et al., 2011; Holt et al., 2016; Schmitt, 2018). It is necessary to identify and model various ecosystem components and thermal thresholds to evaluate this properly. Yet thresholds imply sharp changes in resource use between different system states, while our data indicate rather gradual changes in marine resource use in both areas. Identifying and distinguishing between thresholds versus gradual changes is fundamentally problematic in past ecodynamic systems due to issues of sampling and resolution. Yet the fact that the intensification and deintensification of maritime economies occurred over a multimillennial period clearly indicate gradual developmental trends.

Although a previous study found only minimal evidence for environmental variability as a cause of synchronicity (Freeman et al., 2018), the Fennoscandian archaeological record clearly demonstrates the important role of spatially correlated environmental influences—Moran effects—in creating spatial synchrony among hunter-gatherer populations. The implication is, contrary to Freeman et al. (2018), that intensified economies and social interaction networks have limited impact on long-term hunter-gatherer population trajectories beyond what is already proscribed by external, environmental drivers.

ACKNOWLEDGMENTS

This paper benefited from input from several people. We would especially like to thank Jochen Knies at the Norwegian Geological Survey, who very generously shared and allowed us to use his Malangen Fjord paleoproductivity data. We are grateful for the opportunity to present and discuss this work at the SARG 2018 conference at Alta, Norway, which provided useful input. We thank Felix Riede, Charlotte Damm, Bryan Hood, and three anonymous reviewers for their insightful feedback. In addition, we thank the editors at *Quaternary Research* for generously sharing thoughtful reviews that undoubtedly helped improve this paper. This work was supported by the Stone Age Demographics project funded by the Research Council of Norway (grant no. 261760) and through a doctoral fellowship funded by UiT—The Arctic University of Norway.

MT would like to acknowledge financial support from Kone Foundation and Academy of Finland.

REFERENCES

- Äyräpää, A., 1950. Skifferspetsarna i östra Fenno-Skandien. *Finskt Museum* 57, 9–43.
- Balascio, N.L., Bradley, R.S., 2012. Evaluating Holocene climate change in northern Norway using sediment records from two contrasting lake systems. *Journal of Paleolimnology* 48, 259–273.
- Bang-Andersen, S., 2012. Colonizing contrasting landscapes: the pioneer coast settlement and inland utilization in southern Norway 10,000–9500 years before present. *Oxford Journal of Archaeology* 31, 103–120.
- Bang-Andersen, S., 2013. Missing Boats—or Lacking Thoughts? *Norwegian Archaeological Review* 46, 81–83.
- Behrenfeld, M.J., O'Malley, R.T., Siegel, D.A., McClain, C.R., Sarmiento, J.L., Feldman, G.C., Milligan, A.J., Falkowski, P.G., Letelier, R.M., Boss, E.S., 2006. Climate-driven trends in contemporary ocean productivity. *Nature* 444, 752–755.
- Bergerud, A.T., Lutich, S.N., Camps, L., 2012. *The Return of Caribou to Ungava*. 1st ed. McGill-Queen's University Press, Montreal.
- Bevan, A., Colledge, S., Fuller, D., Fyfe, R., Shennan, S., Stevens, C., 2017. Holocene fluctuations in human population demonstrate repeated links to food production and climate. *Proceedings of the National Academy of Sciences USA* 114(49), E10524–E10531. <https://doi.org/10.1073/pnas.1709190114>.
- Binford, L.R., 2001. *Constructing Frames of Reference: An Analytical Method for Archaeological Theory Building Using Ethnographic and Environmental Data Sets*. University of California Press, Berkeley.
- Bjerck, H.B., 2017. Settlements and seafaring: reflections on the integration of boats and settlements among marine foragers in Early Mesolithic Norway and the Yámana of Tierra del Fuego. *Journal of Island and Coastal Archaeology* 12, 276–299.
- Bleed, P., 1986. The optimal design of hunting weapons: maintainability or reliability. *American Antiquity* 51, 737–747.
- Bromley, L.R.A., De Saussure, V.A., Clipp, J.C., Wright, J.S., 1967. Heat capacities of sea water solutions at salinities of 1 to 12‰ and temperatures of 2.degree. to 80.degree. *Journal of Chemical and Engineering Data* 12, 202–206.
- Butler, D.H., Koivisto, S., Brumfeld, V., Shahack-Gross, R., 2019. Early Evidence for Northern salmonid fisheries discovered using novel mineral proxies. *Science Reports* 9, 147.
- Calvo, E., Grimalt, J., Jansen, E., 2002. High resolution U37K sea surface temperature reconstruction in the Norwegian Sea during the Holocene. *Quaternary Science Reviews* 21, 1385–1394.
- Carr, M.H., Neigel, J.E., Estes, J.A., Andelman, S., Warner, R.R., Largier, J.L., 2003. Comparing marine and terrestrial ecosystems: implications for the design of coastal marine reserves. *Ecological Applications* 13, 90–107.
- Clark, D.W., 1979. *Ocean Bay: An Early North Pacific Maritime Culture*. National Museum of Canada, Ottawa.
- Clark, D.W., 1980. Relationships of North Pacific and American Arctic centres of slate grinding. *Canadian Journal of Archaeology/Journal Canadien d'Archéologie* 27–38.
- Clark, D.W., 1982. An example of technological change in prehistory: the origin of a regional ground slate industry in south-central coastal Alaska. *Arctic Anthropology* 19, 103–125.
- Cramp, L.J.E., Evershed, R.P., Lavento, M., Halinen, P., Mannermaa, K., Oinonen, M., Kettunen, J., Perola, M., Onkamo, P., Heyd, V., 2014. Neolithic dairy farming at the extreme of agriculture in northern Europe. *Proceedings of the Royal Society of London B* 281, 20140819.
- Cziesla, E., 2007. Robbenjagd in Brandenburg? Gedanken zur Verwendung großer Widerhakenspitzen. *Ethnographisch-Archäologische Zeitschrift* 48, 1–48.
- Cziesla, E., 2018. Seal-hunting in the Final Palaeolithic of northern Europe. In: Persson, P., Riede, F., Skar, B., Breivik, H.M., Jonsson, L. (Eds.) *The Ecology of Early Settlement in Northern Europe. Conditions for Subsistence and Survival*. Vol. 1. Equinox, Sheffield, UK, pp. 55–97.
- Damm, C.B., 2006. Interregional contacts across northern Fennoscandia 6000–4000 BC. Arneborg, J., Grønnow, B. (Eds.) *Dynamics of Northern Societies. Proceedings of the SILA/NABO Conference on Arctic and North Atlantic Archaeology*. PNM, Publications from the National Museum, Studies in

- Archaeology and History, Vol. 10. National Museum of Denmark, Copenhagen, pp. 199–208.
- Damm, C.B., Skandfer, M., Jørgensen, E.K., Sjögren, P., Vollan, K.W.B., Jordan, P., 2019. Investigating long-term human ecodynamics in the European Arctic: towards an integrated multi-scalar analysis of Early and Mid Holocene cultural, environmental and palaeodemographic sequences in Finnmark County, northern Norway. *Quaternary International*
- Dinwiddie, J., 2014. The Ground Slate Transition on the Northwest Coast: Establishing a Chronological Framework. M.Sc. thesis, Portland State University, Portland, OR. <https://doi.org/10.15760/etd.2075>
- Dolukhanov, P.M., Kosheleva, E.A., Lisitsyn, S.N., Subetto, D.A., 2017. 1.5—Eastern Fennoscandia and the adjacent regions of the northwestern East European Plain. In: Kotlyakov, V.M., Velichko, A.A., Vasil'ev, S.A. (Eds.), *Human Colonization of the Arctic: The Interaction Between Early Migration and the Paleoenvironment*. Academic Press, London, pp. 51–72.
- Dumond, D.E., 1968. On the presumed spread of slate grinding in Alaska. *Arctic Anthropology* 5, 82–91.
- Edinburgh, K., Porčić, M., Martindale, A., Brown, T.J., Supernant, K., Ames, K.M., 2017. Radiocarbon test for demographic events in written and oral history. *Proceedings of the National Academy of Sciences USA* 114, 12436–12441.
- Eldevik, T., Risebrobakken, B., Bjune, A.E., Andersson, C., Birks, H.J.B., Dokken, T.M., Drange, H., et al., 2014. A brief history of climate—the northern seas from the Last Glacial Maximum to global warming. In: *Dating, Synthesis, and Interpretation of Palaeoclimatic Records and Model-Data Integration: Advances of the INTIMATE project (INTEGRation of Ice core, Marine and TERrestrial records, COST Action ES0907)*. Special issue, *Quaternary Science Reviews* 106, 225–246.
- Engelstad, E., 1983. *The Iversfjord Locality: A Study of Behavioral Patterning during the Late Stone Age of Finnmark, North Norway*. Tromsø Museum, Tromsø.
- Engelstad, E., 1984. Diversity in arctic maritime adaptations: an example from the Late Stone Age of arctic Norway. *Acta Borealia* 1, 3–24.
- Fitzhugh, B., 2016. The origins and development of Arctic maritime adaptations in the subarctic and arctic Pacific. In: Max Friesen, M., Mason, O. (Eds.), *The Oxford Handbook of the Prehistoric Arctic*. Oxford Handbooks Online. <https://doi.org/10.1093/oxfordhb/9780199766956.013.20>.
- Fitzhugh, W., 1974. Ground slates in the Scandinavian Younger Stone Age with reference to circumpolar maritime adaptations. *Proceedings of the Prehistoric Society* 40, 45–58.
- Freeman, J., Baggio, J.A., Robinson, E., Byers, D.A., Gayo, E., Finley, J.B., Meyer, J.A., Kelly, R.L., Anderies, J.M., 2018. Synchronization of energy consumption by human societies throughout the Holocene. *Proceedings of the National Academy of Sciences USA* 115, 9962–9967.
- Gardner, J.V., Dean, W.E., Dartnell, P., 1997. Biogenic sedimentation beneath the California Current System for the past 30 kyr and its paleoceanographic significance. *Paleoceanography* 12, 207–225.
- George, S.S., Telford, R.J., 2017. Fossil forest reveals sunspot activity in the early Permian: COMMENT. *Geology* 45, e427–e427.
- Gjerde, J.M., 2018. Marine mammals in the rock art of Alta, Norway, northernmost Europe, In: *Whale on the Rock II / 한국의 선사미술 II. Ulsan Petroglyph Museum, Ulsan*. pp. 193–208.
- Gjerde, J.M., Skandfer, M., 2018. Large Mesolithic house-pits at Tønsnes, coastal northern Norway: evidence of a winter aggregation site? In: Blankholm, H.P. (Ed.), *Early Economy and Settlement in Northern Europe—Pioneering, Resource Use, Coping with Change*. Equinox eBooks Publishing, Sheffield, UK, pp. 69–76.
- Gjessing, G., 1953. The circumpolar Stone Age. *Antiquity* 27, 131–136.
- Graesch, A.P., 2007. Modeling ground slate knife production and implications for the study of household labor contributions to salmon fishing on the Pacific Northwest Coast. *Journal of Anthropology and Archaeology* 26, 576–606.
- Grayson, D.K., 1984. *Quantitative Zooarchaeology: Topics in the Analysis of Archaeological Faunas*. Academic Press, Orlando.
- Groß, D., Zander, A., Boethius, A., Dreibrodt, S., Grøn, O., Hansson, A., Jessen, C., et al., 2018. People, lakes and seashores: studies from the Baltic Sea basin and adjacent areas in the early and Mid-Holocene. *Quaternary Science Reviews* 185, 27–40.
- Gunderson, L.H., 2000. Ecological resilience—in theory and application. *Annual Review of Ecology, Evolution, and Systematics* 31, 425–439.
- Günther, T., Malmström, H., Svensson, E.M., Omrak, A., Sánchez-Quinto, F., Kılınc, G.M., Krzewińska, M., et al., 2018. Population genomics of Mesolithic Scandinavia: investigating early postglacial migration routes and high-latitude adaptation. *PLoS Biology* 16, e2003703.
- Gustafsson, B.G., Westman, P., 2002. On the causes for salinity variations in the Baltic Sea during the last 8500 years. *Paleoceanography* 17, 12-1–12-14.
- Haynes, C.V., 1969. The earliest Americans. *Science* 166, 709–715.
- Heikkilä, M., Seppä, H., 2003. A 11,000yr palaeotemperature reconstruction from the southern boreal zone in Finland. *Quaternary Science Reviews* 22, 541–554. [https://doi.org/10.1016/S0277-3791\(02\)00189-0](https://doi.org/10.1016/S0277-3791(02)00189-0)
- Helskog, E., 1974. *Innberetning om utgravninger ved Alta-Kautokeino-Vassdraget 1974*. Institutt for Museumsvirksomhet, Universitetet i Tromsø, Arkeologisk avdeling, Tromsø Museum, Tromsø.
- Hesjedal, A., Damm, C., Olsen, B., Storli, I., 1996. *Arkeologi på Slettnes: dokumentasjon av 11.000 års bosetning*. Tromsø Museum, Tromsø.
- Holt, J., Schrum, C., Cannaby, H., Daewel, U., Allen, I., Artioli, Y., Bopp, L., et al., 2016. Potential impacts of climate change on the primary production of regional seas: A comparative analysis of five European seas. *Progress in Oceanography* 140, 91–115.
- Hood, B.C., 1992. Prehistoric Foragers of the North Atlantic: Perspectives on Lithic Procurement and Social Complexity in the North Norwegian Stone Age and the Labrador Maritime Archaic. Doctoral dissertation, University of Massachusetts, Amherst.
- Hood, B.C., 2012. The empty quarter? Identifying the Mesolithic of interior Finnmark, north Norway. *Arctic Anthropology* 49, 105–135.
- Hood, B.C., in press. Settlement models for interior Finnmark. In: Skandfer, M., Blankholm, H.P., Hood, B.C. (Eds.), *Archaeological Perspectives on Hunter-Gatherer Landscapes and Resource Management in Interior North Norway*. Equinox, Sheffield, UK.
- Hood, B.C., Blankholm, H.P., Skandfer, M., in press. Conclusion: resource management and landscape use in a long-term perspective. In: Skandfer, M., Blankholm, H.P., Hood, B.C. (Eds.), *Archaeological Perspectives on Hunter-Gatherer Landscapes and Resource Management in Interior North Norway*. Equinox, Sheffield, UK.
- Hood, B.C., Helama, S., 2010. Karlebotnbakken reloaded: shifting the chronological significance of an iconic late stone age site in

- Varangerfjord, North Norway. *Fennoscandia Archaeologica* 27, 35–43.
- Husum, K., Hald, M., 2004. A continuous marine record 8000–1600 cal. yr BP from the Malangenfjord, north Norway: foraminiferal and isotopic evidence. *The Holocene* 14, 877–887.
- Huurte, Matti. 1983. *Pohjois-Pohjanmaan ja Lapin historia I - Pohjois-Pohjanmaan ja Lapin esihistoria*. Kuusamo.
- Jordan, P., Zvelebil, M., 2010. *Ceramics before Farming: The Dispersal of Pottery among Prehistoric Eurasian Hunter-Gatherers*. Routledge, Walnut Creek, CA.
- Jørgensen, E.K., 2018. The palaeodemographic and environmental dynamics of prehistoric Arctic Norway: an overview of human-climate covariation. *Quaternary International* (in press). <https://doi.org/10.1016/j.quaint.2018.05.014>.
- Jørgensen, E.K., Riede, F., 2019. Convergent catastrophes and the termination of the Arctic Norwegian Stone Age: a multi-proxy assessment of the demographic and adaptive responses of mid-Holocene collectors to biophysical forcing. *The Holocene* 29, 1782–1800.
- Kahilainen, A., Nouhuys, S. van, Schulz, T., Saastamoinen, M., 2018. Metapopulation dynamics in a changing climate: Increasing spatial synchrony in weather conditions drives metapopulation synchrony of a butterfly inhabiting a fragmented landscape. *Global Change Biology* 24, 4316–4329. <https://doi.org/10.1111/gcb.14280>
- Kander, A., Malanima, P., Warde, P., 2013. *Power to the People: Energy in Europe over the Last Five Centuries*. Princeton University Press, Princeton, NJ.
- Kawecki, T.J., 2004. 16—Ecological and Evolutionary Consequences of Source-Sink Population Dynamics. In: Gaggiotti, I.H.E. (Ed.), *Ecology, Genetics and Evolution of Metapopulations*. Academic, Burlington, MA, pp. 387–414.
- Kelly, D.R.L., 2013. *The Lifeways of Hunter-Gatherers: The Foraging Spectrum*. 2nd rev. ed. Cambridge University Press, Cambridge.
- Kirch, P.V., 1980. The archaeological study of adaptation: theoretical and methodological issues. *Advances in Archaeological Method and Theory* 3, 101–156.
- Knies, J., Hald, M., Ebbesen, H., Mann, U., Vogt, C., 2003. A deglacial–middle Holocene record of biogenic sedimentation and paleoproductivity changes from the northern Norwegian continental shelf. *Paleoceanography* 18(4), 1–13.
- Koenig, W.D., 2002. Global patterns of environmental synchrony and the Moran effect. *Ecography* 25, 283–288.
- Koivisto, S., 2012. Subneolithic fishery in the Iijoki River estuary, northern Ostrobothnia, Finland. *Journal of Wetland Archaeology* 12, 22–47.
- Koivisto, S., Latvakoski, N., Perttola, W., 2018. Out of the peat: preliminary geophysical prospection and evaluation of the mid-Holocene stationary wooden fishing structures in Haapajärvi, Finland. *Journal of Field Archaeology* 43, 166–180.
- Koivisto, S., Nurminen, K., 2015. Go with the flow: stationary wooden fishing structures and the significance of estuary fishing in Subneolithic Finland. *Fennoscandia Archaeologica* 32, 55–77.
- Lahtinen, M., Oinonen, M., Tallavaara, M., Walker, J.W., Rowley-Conwy, P., 2017. The advance of cultivation at its northern European limit: process or event? *The Holocene* 27, 427–438.
- Liebold, A., Koenig, W.D., Bjørnstad, O.N., 2004. Spatial synchrony in population dynamics. *Annual Review of Ecology, Evolution, and Systematics* 35, 467–490.
- Madsen, D.B., Schmitt, D.N., 1998. Mass collecting and the Diet Breadth model: a Great Basin Example. *Journal of Archaeological Science* 25, 445–455.
- Meehl, G.A., Arblaster, J.M., Fasullo, J.T., Hu, A., Trenberth, K.E., 2011. Model-based evidence of deep-ocean heat uptake during surface-temperature hiatus periods. *Nature Climate Change* 1, 360–364.
- Minc, L.D., Smith, K.P., 1989. The Spirit of Survival: Cultural Responses to Resource Variability in North Alaska. In: Halstead, P., O’Shea, J.M. (Eds.), *Bad Year Economics: Cultural Responses to Risk and Uncertainty*. Cambridge University Press, Cambridge, pp. 8–39.
- Mökkönen, T., 2009. Kivikautinen maanviljely Suomessa. *Suomen Museo* 34, 5–38.
- Moran, P. A. P., 1953. The statistical analysis of the Canadian Lynx cycle. *Australian Journal of Zoology*. 1, 291–298. <https://doi.org/10.1071/zo9530291>
- Morin, J., 2004. Cutting edges and salmon skin: variation in salmon processing technology on the northwest coast. *Canadian Journal of Archaeology/Journal Canadien d’Archéologie* 28, 281–318.
- Nordqvist, K., Herva, V.-P., Ikäheimo, J., Lahelma, A., 2012. Early copper use in Neolithic north-eastern Europe: an overview. *Estonian Journal of Archaeology* 16, 3–25.
- Núñez, M., 1990. On Subneolithic pottery and its adoption in late Mesolithic Finland. *Fennoscandia Archaeologica* 7, 26.
- Núñez, M., 1998. Slates, the “plastics” of Stone Age Finland. In: Holm, L., Knutsson, K. (Eds.), *Proceedings of the Third Flint Alternatives Conference at Uppsala, Sweden, October 18–20, 1996*. Occasional Papers in Archaeology. Department of Archaeology and Ancient History, Uppsala University, Uppsala, Sweden, pp. 105–124.
- Ojala, A.E.K., Alenius, T., 2005. 10000 years of interannual sedimentation recorded in the Lake Nautajärvi (Finland) clastic-organic varves. *Palaeoecology, Palaeoclimatology, Palaeoecology* 219, 285–302.
- Ojala, A.E.K., Alenius, T., Seppä, H., Giesecke, T., 2008. Integrated varve and pollen-based temperature reconstruction from Finland: evidence for Holocene seasonal temperature patterns at high latitudes. *The Holocene* 18, 529–538.
- Olsen, H., 1967. *Varanger-Funnene*. Vol. 4, Osteologisk Materiale: innledning-Fisk-Fugl. Universitetsforlaget, Tromsø.
- Osborn, A., 1977. *Aboriginal Exploitation of Marine Food Resources*. PhD dissertation, University of New Mexico, Albuquerque.
- Pääkkönen, M., Bläuer, A., Evershed, R.P., Asplund, H., 2016. Reconstructing food procurement and processing in early comb ware period through organic residues in Early Comb and Jäkärälä Ware pottery. *Fennoscandia Archaeologica* 33, 57–75.
- Papakosta, V., Pesonen, P., 2019. Lipid residues in early hunter-gatherer ceramics from Finland. In: Mannermaa, K., Manninen, M.A., Pesonen, P., Seppänen, L. (Eds.), *Helsinki Harvest. Proceedings of the 11th Nordic Conference on the Application of Scientific Methods in Archaeology (SMIA)*. Monographs of the Archaeological Society of Finland (MASF) 7. Archaeological Society of Finland, Helsinki, pp. 32–47.
- Perdikaris, S., 1999. From chiefly provisioning to commercial fishery: long-term economic change in Arctic Norway. *World Archaeol.* 30, 388–402.
- Pesonen, P., Leskinen, S., 2009. Pottery of the Stone Age hunter-gatherers in Finland. In *Ceramics before Farming: The Dispersal of Pottery Among Prehistoric Eurasian Hunter-Gatherers*, edited by P. Jordan and M. Zvelebil, pp. 299–318. Left Coast Press, Walnut Creek.
- Ramsey, C.B., 2017. Methods for Summarizing Radiocarbon Datasets. *Radiocarbon* 59, 1809–1833.

- Ramstad, M., Axelsson, T., Strinnholm, A., 2015. Amber. In: *The Oxford Handbook of Neolithic Europe*. Oxford University Press, Oxford, pp. 657–672.
- Renouf, M.A.P., 1986. Excavations at a Younger Stone Age settlement in Varangerfjord, Norway. *Polar Record* 23, 273–288.
- Renouf, M.A.P., 1989. *Prehistoric Hunter-Fishers of Varangerfjord, Northeastern Norway: Reconstruction of Settlement and Subsistence During the Younger Stone Age*. British Archaeological Reports Publishing, Oxford.
- Rick, J.W., 1987. Dates as data: an examination of the Peruvian pre-ceramic radiocarbon record. *American Antiquity* 52, 55–73.
- Riede, F., Høye, T.T., Tejsner, P., Veldhuis, D., Willerslev, R., 2018. Special section introduction: socioecological disequilibrium in the circumpolar north. *Human Ecology* 46, 615–620.
- Ritchie, W.A., 1969. Ground Slates: East and West. *American Antiquity* 34, 385–391.
- Romundset, A., Bondevik, S., 2011. Propagation of the Storegga tsunami into ice-free lakes along the southern shores of the Barents Sea. *Journal of Quaternary Science* 26, 457–462.
- Romundset, A., Bondevik, S., Bennike, O., 2011. Postglacial uplift and relative sea level changes in Finnmark, northern Norway. *Quaternary Science Reviews* 30, 2398–2421.
- Rosenstock, T.S., Hastings, A., Koenig, W.D., Lyles, D.J., Brown, P.H., 2011. Testing Moran's theorem in an agroecosystem. *Oikos* 120, 1434–1440. <https://doi.org/10.1111/j.1600-0706.2011.19360.x>
- Sarmaja-Korjonen, K., Seppä, H., 2007. Abrupt and consistent responses of aquatic and terrestrial ecosystems to the 8200 cal. yr cold event: a lacustrine record from Lake Arapisto, Finland. *The Holocene* 17, 457–467. <https://doi.org/10.1177/0959683607077020>
- Schmitt, L., 2015. Early colonization, glacial melt water, and island mass effect in the archipelago of western Sweden: a case history. *Oxford Journal of Archaeology* 34, 109–117.
- Schmitt, L., Larsson, S., Schrum, C., Alekseeva, I., Tomczak, M., Svedhage, K., 2006. “Why they came”; the colonization of the coast of western Sweden and its environmental context at the end of the last glaciation. *Oxford Journal of Archaeology* 25, 1–28.
- Schmitt, L., Svedhage, K., 2015. Chronological aspects of the Hensbacka—a group of hunter-gatherers/fishers on the west coast of Sweden during the Pleistocene/Holocene transition: an example of early coastal colonization. *Danish Journal of Archaeology* 4, 75–81.
- Schmitt, R., 2018. The ocean's role in climate. *Oceanography* 31, 32–40.
- Schulting, R., Budd, C., Denham, S., 2016. Re-visiting the Viste skeleton, western Norway. *Mesolithic Misc.* 24, 22–27.
- Schurer, A.P., Tett, S.F.B., Hegerl, G.C., 2014. Small influence of solar variability on climate over the past millennium. *Nature Geoscience* 7, 104–108.
- Seppä, H., Alenius, T., Bradshaw, R.H.W., Giesecke, T., Heikkilä, M., Muukkonen, P., 2009a. Invasion of Norway spruce (*Picea abies*) and the rise of the boreal ecosystem in Fennoscandia. *Journal of Ecology* 97, 629–640.
- Seppä, H., Bjune, A.E., Telford, R.J., Birks, H.J.B., Veski, S., 2009b. Last nine-thousand years of temperature variability in Northern Europe. *Climate of the Past* 5, 523–535. <https://doi.org/https://doi.org/10.5194/cp-5-523-2009>
- Shennan, S., 2013. Demographic continuities and discontinuities in Neolithic Europe: evidence, methods and implications. *Journal of Archaeological Method and Theory* 20, 300–311.
- Shennan, S., Downey, S.S., Timpson, A., Edinborough, K., Colledge, S., Kerig, T., Manning, K., Thomas, M.G., 2013. Regional population collapse followed initial agriculture booms in mid-Holocene Europe. *Nature Communications*. 4. <https://doi.org/10.1038/ncomms3486>
- Shennan, S., Edinborough, K., 2007. Prehistoric population history: from the Late Glacial to the Late Neolithic in central and northern Europe. *Journal of Archaeological Science* 34, 1339–1345.
- Silva, F., Vander Linden, M., 2017. Amplitude of travelling front as inferred from 14 C predicts levels of genetic admixture among European early farmers. *Science Reports* 7, 11985.
- Sjögren, P., 2009. Climate, cod and crops: coastal land use in the SW Barents Sea region during the past 2.5 ka. *The Holocene* 19, 703–716.
- Sjögren, P., Arntzen, J.E., 2013. Agricultural practices in Arctic Norway during the first millennium B.C. *Vegetation History and Archaeobotany* 22, 1–15.
- Sjögren, P., Damm, C., 2019. Holocene vegetation change in northernmost Fennoscandia and the impact on prehistoric foragers 12 000–2000 cal. a BP—a review. *Boreas* 48, 20–35.
- Skandfer, M., 2003. *Tidlig, nordlig kamkeramikk: typologi, kronologi, kultur*. Universitetet i Tromsø, Tromsø.
- Sørensen, R., Bakkelid, S., Torp, B., 1987. Land Uplift. Nasjonalatlas for Norge. Hovedtema 2: Landformer, berggrunn og løsmasser. Kartblad 2.3.3. Norwegian Mapping Authority, Hønefoss.
- Star, B., Boessenkool, S., Gondek, A.T., Nikulina, E.A., Hufthammer, A.K., Pampoulie, C., Knutsen, H., et al., 2017. Ancient DNA reveals the Arctic origin of Viking Age cod from Haithabu, Germany. *Proceedings of the National Academy of Sciences USA* 114, 9152–9157.
- Steele, J.H., 1985. A comparison of terrestrial and marine ecological systems. *Nature* 313, 355–358.
- Steele, J.H., Brink, K.H., Scott, B.E., 2019. Comparison of marine and terrestrial ecosystems: suggestions of an evolutionary perspective influenced by environmental variation. *ICES Journal of Marine Science* 76, 50–59.
- Steffian, A.F., Saltonstall, P.G., Kopperl, R.E., 2006. Expanding the kachemak: surplus production and the development of multi-season storage in Alaska's Kodiak Archipelago. *Arctic Anthropology* 43, 93–129.
- Surovell, T.A., Brantingham, P.J., 2007. A note on the use of temporal frequency distributions in studies of prehistoric demography. *Journal of Archaeological Science* 34, 1868–1877.
- Surovell, T.A., Byrd Finley, J., Smith, G.M., Brantingham, P.J., Kelly, R., 2009. Correcting temporal frequency distributions for taphonomic bias. *Journal of Archaeological Science* 36, 1715–1724.
- Tallavaara, M., Eronen, J.T., Luoto, M., 2018. Productivity, biodiversity, and pathogens influence the global hunter-gatherer population density. *Proceedings of the National Academy of Sciences USA* 115, 1232–1237.
- Tallavaara, M., Pesonen, P. 2018. Human ecodynamics in the north-west coast of Finland 10,000–2000 years ago. *Quaternary International*. <https://doi.org/10.1016/j.quaint.2018.06.032>.
- Tallavaara, M., Pesonen, P., Oinonen, M., 2010. Prehistoric population history in eastern Fennoscandia. *Journal of Archaeological Science*. 37, 251–260. <https://doi.org/10.1016/j.jas.2009.09.035>
- Tallavaara, M., Seppä, H., 2012. Did the mid-Holocene environmental changes cause the boom and bust of hunter-gatherer population size in eastern Fennoscandia? *The Holocene* 22, 215–225.
- Telford, R., Rehfeld, K., St. George, S., 2015. Is there robust evidence of solar variability in palaeoclimate proxy data? Presented at the EGU General Assembly Conference, Austria, Vienna 12–17 April, p. 12156.

- Terberger, T., Floss, H., Heinzlmann, P., Kotula, A., Serangeli, J., 2013. Down the river Rhine ca. 16,000 years ago: new evidence from the site Dreieich-Götzenhain. In: Pastoors, A., Auffermann, B. (Eds.), *Pleistocene Foragers: Their Culture and Environment, Festschrift in Honour of Gerd-Christian Weniger for His Sixtieth Birthday, Wissenschaftliche Schriften des Neanderthal-Museums*. Neanderthal Museum, Mettmann, Germany, pp. 101–115.
- Timpson, A., Colledge, S., Crema, E., Edinborough, K., Kerig, T., Manning, K., Thomas, M.G., Shennan, S., 2014. Reconstructing regional population fluctuations in the European Neolithic using radiocarbon dates: a new case-study using an improved method. *Journal of Archaeological Science* 52, 549–557.
- Turner, T.E., Swindles, G.T., Charman, D.J., Langdon, P.G., Morris, P.J., Booth, R.K., Parry, L.E., Nichols, J.E., 2016. Solar cycles or random processes? Evaluating solar variability in Holocene climate records. *Science Reports* 6, 23961.
- Utne, A., 1973. En veidekulturs boplass i Lofoten, Storbåthallaren ved Nappstraumen. (Mag. Art. Dissertation). Institute of Social Science, Department of Archaeology, University of Tromsø, Tromsø.
- Vasil'evskii, R.S., Bland, R.L., Gokhman, A., Workman, W., Workman, K., 1998. Fishing as an early form of maritime adaptation on the Pacific Coast of northeast Asia. *Arctic Anthropology* 35, 281–295.
- Vorren, K.-D., Jensen, C.E., Nilssen, E., 2012. Climate changes during the last c. 7500 years as recorded by the degree of peat humification in the Lofoten region, Norway. *Boreas* 41, 13–30.
- Warden, L., Moros, M., Neumann, T., Shennan, S., Timpson, A., Manning, K., Sollai, M., Wacker, L., Perner, K., Häusler, K., Leipe, T., Zillén, L., Kotilainen, A., Jansen, E., Schneider, R.R., Oeberst, R., Arz, H., Damsté, J.S.S., 2017. Climate induced human demographic and cultural change in northern Europe during the mid-Holocene. *Science Reports* 7, 15251.
- Wilhelmsson, Å., 1996. *Skifferknivar—förekomst, utbredning och användning. Praktiska och teoretiska studier kring knivar från södra Norrland*. Unpublished CD-dissertation at Umeå University Department of Archeology, Umeå, Sweden.
- Williams, A.N., 2012. The use of summed radiocarbon probability distributions in archaeology: a review of methods. *Journal of Archaeological Science* 39, 578–589.
- Wittmeier, H.E., Bakke, J., Vasskog, K., Trachsel, M., 2015. Reconstructing Holocene glacier activity at Langfjordjøkelen, Arctic Norway, using multi-proxy fingerprinting of distal glacier-fed lake sediments. *Quaternary Science Reviews* 114, 78–99.
- Wunsch, C., 2005. The total meridional heat flux and its oceanic and atmospheric partition. *Journal of Climate* 18, 4374–4380.
- Yesner, D.R., Ayres, W.S., Carlson, D.L., Davis, R.S., Dewar, R., Morales, M.R.G., Hassan, F.A., et al., 1980. Maritime hunter-gatherers: ecology and prehistory [and comments and reply]. *Current Anthropology* 21, 727–750.
- Yu, L., Weller, R.A., 2007. Objectively analyzed air–sea heat fluxes for the global ice-free oceans (1981–2005). *Bulletin of the American Meteorological Society* 88, 527–540. <https://doi.org/10.1175/BAMS-88-4-527>