

Beyond Newgrange: Brú na Bóinne in the later Neolithic

By STEPHEN DAVIS¹ and KNUT RASSMANN²

The Brú na Bóinne World Heritage Site, Ireland is best known for its megalithic monuments, in particular the great developed passage tombs of Knowth, Dowth, and Newgrange, and its abundance of megalithic art. However, our understanding of the wider Brú na Bóinne landscape has changed beyond all recognition in the last decade owing to the application of modern, non-invasive survey technologies – in particular LiDAR and large-scale geophysical survey – and most recently as a result of the hot, dry summer of 2018 which revealed a series of remarkable cropmarks between Newgrange and the River Boyne. Despite a lack of excavation it can be argued, based on their morphological characteristics, that many of the structures revealed belong within the corpus of late Neolithic ritual/ceremonial structures, including earthen henges, square-in-circle monuments, palisaded enclosures, and pit/post-alignments. These display both extraordinary diversity, yet also commonality of design and architecture, both as a group and with the passage tombs that preceded them. This paper provides an up-to-date survey of the late Neolithic and presumed late Neolithic landscape of Brú na Bóinne. It provides new evidence and new insights from ongoing survey campaigns, suggesting parallels within the British Neolithic but also insular development within some monument classes.

Keywords: Brú na Bóinne, Newgrange, Knowth, geophysical survey, LiDAR, Neolithic landscape

The unusually dry summer of 2018 brought exceptional conditions for aerial archaeology across Britain and Ireland. Arguably, some of the most striking discoveries of this drought came from Ireland and, in particular, from the Brú na Bóinne World Heritage site, revealing a series of cropmark enclosures including some of unusual design (Condit & Keegan 2018). In parallel to these remarkable aerial discoveries, many other previously unidentified archaeological features have been revealed by an ongoing programme of large-scale geophysical survey, covering *c.* 350 ha of the World Heritage Site core area and buffer zones since 2014. These discoveries provided the initial impetus for this review, the main objective of which is to provide an up-to-date survey of the late Neolithic monumentality of Brú na Bóinne and to place some of these recent discoveries in a regional context. It must be stressed at the outset that any synthesis of these sites is severely

hampered by the lack of excavation of Irish henge monuments in recent decades (*cf.* Smyth 2009, 91). Much of the information presented here can therefore only be based upon analogies with excavated sites in Ireland and elsewhere and interpretations are likely to be subject to change with any future excavation and dating of archaeological features.

THE ARCHAEOLOGICAL ENSEMBLE OF THE BEND IN THE BOYNE (BRÚ NA BÓINNE)

Brú na Bóinne is one of only two UNESCO World Heritage Sites in the Republic of Ireland and one of the most significant prehistoric archaeological landscapes in Europe. The ‘Bend in the Boyne’ occupies a broad, rock-cut meander in the river, bounded to the north by a second, smaller river, the Mattock (Lewis *et al.* 2017). The area is best known for its Neolithic passage tombs, especially the large developed tombs of Knowth, Dowth, and Newgrange, which were constructed towards the end of the 4th millennium BC (see dates summarised in Smyth 2009; Eogan & Cleary 2017), and for the remarkable corpus of megalithic

¹UCD School of Archaeology, Belfield, Dublin 4. stephen.davis@ucd.ie

²Römisch-Germanische Kommission, Palmengartenstraße 10-12. 60325 Frankfurt a. M. knut.rassmann@dainst.de

art within the necropolis (c. 400 decorated stones at Knowth alone; O'Sullivan 2006).

In addition to the middle Neolithic tombs, for which it is justifiably famous (Herity 1975; Eogan 1986; Eogan & Doyle 2010), Brú na Bóinne preserves a remarkable collection of probable late Neolithic monuments that are especially concentrated in the area between Newgrange and the River Boyne. These comprise an increasingly diverse group of earthen and timber monuments, most likely dating to the early–middle 3rd millennium BC. They include ‘embanked enclosures’ (see Stout 1991) or henge monuments (see below), circular/sub-circular enclosures incorporating a central four-post setting (‘square-in-circle’ monuments or ‘four-post structures’ – eg, Bradley 2007, 119; Noble *et al.* 2012; Carlin & Cooney 2017), and timber structures, including palisades and post alignments. This monumental complex has seen relatively little ground-based research and has largely been discovered in recent years through aerial photography, satellite imagery, analysis of LiDAR data, and large-scale geomagnetic surveys (Davis *et al.* 2013; Megarry & Davis 2013 Condit & Keegan 2018; Davis 2018; Leigh *et al.* 2018; Rassmann *et al.* 2019; see Fig. 1 & Table 1). Along with chance discoveries of late Neolithic material during excavations in the vicinity of Knowth and Newgrange these sites, many of which have little or no surface expression, are crucial to our understanding of Brú na Bóinne in the period following passage tomb construction.

A note on site names in Brú na Bóinne

Historically, sites within Brú na Bóinne were assigned single letter identifiers, first by Coffey (1912) with subsequent revision by Claire O’Kelly (1978); while initially useful, this led to an inevitable shortage once the end of the alphabet was reached with Tomb Z (O’Kelly *et al.* 1978). This has in turn led to a more *ad hoc* naming of sites in recent years, such as the sites regrettably identified by one of the authors as Sites LP1 and LP2 (LP = Low Profile; Davis *et al.* 2013) and the more recent descriptive names assigned by Condit and Keegan (2018) such as ‘The Great Palisade’, ‘The Geometric Henge’ and the ‘Great Rectangular Palisade Enclosure’. Clearly the naming of these sites is long overdue for revision. In the current paper O’Kelly’s (1978) identifiers are used where possible; however, ‘new’ sites are lacking these and

so they are primarily referred to using the unique Irish Sites and Monuments Record (SMR) number.¹ Most of the potential archaeological sites identified by the ongoing campaign of geomagnetic survey have not yet been included in the SMR database and have each been assigned a unique identifier within the survey GIS, comprising a two or three-letter townland abbreviation and a site number. These are summarised in Table 1 and Figure 1, which also identifies the means by which more recently discovered sites have been identified. Additionally, within Brú na Bóinne there remain issues of classification regarding some site types. Some sites that are almost certainly passage tombs and have been discussed as such within the literature (eg, the Ballinacrad tombs; Cooney 2000, 154) are recorded within the SMR and RMP as mound barrows and/or mounds. Similarly, the classifications ‘henge’ and ‘embanked enclosure’ are used interchangeably and seemingly arbitrarily. For the purposes of this paper, henges and embanked enclosures are regarded as indistinguishable. Passage tombs, mound barrows, and mounds within Brú na Bóinne are more problematic and have tended to be treated as ‘known unknowns’ – sites that are widely known and accepted as passage tombs (eg, Herity 1975) but are not classified as such within the Irish RMP or SMR.

EXCAVATION AND CHRONOLOGY

As already stated, there has been little excavation of henge monuments or timber circles within Brú na Bóinne in recent decades and no earthen henge monument has been excavated here since the partial excavations at Monknewtown (Sweetman 1971; 1976). Both O’Kelly *et al.* (1983) and Sweetman *et al.* (1985) excavated elements of the Newgrange Pit Circle, with further excavations undertaken at the possible Western Circle (Sweetman *et al.* 1987) and the Knowth four-post structure (Eogan & Roche 1997; 1999). In this context, the test excavation of part of the ‘Great Rectangular Palisade’ in 2018 (Leigh *et al.* 2018; 2019) represents the most significant recent excavation within the Brú na Bóinne late Neolithic complex. While the dates from the Knowth four-post structure, possible Western Circle, and Newgrange Pit Circle cluster in the early–middle 3rd millennium BC, those from the Monknewtown Henge remain highly problematic, ranging from the middle Neolithic through to the early

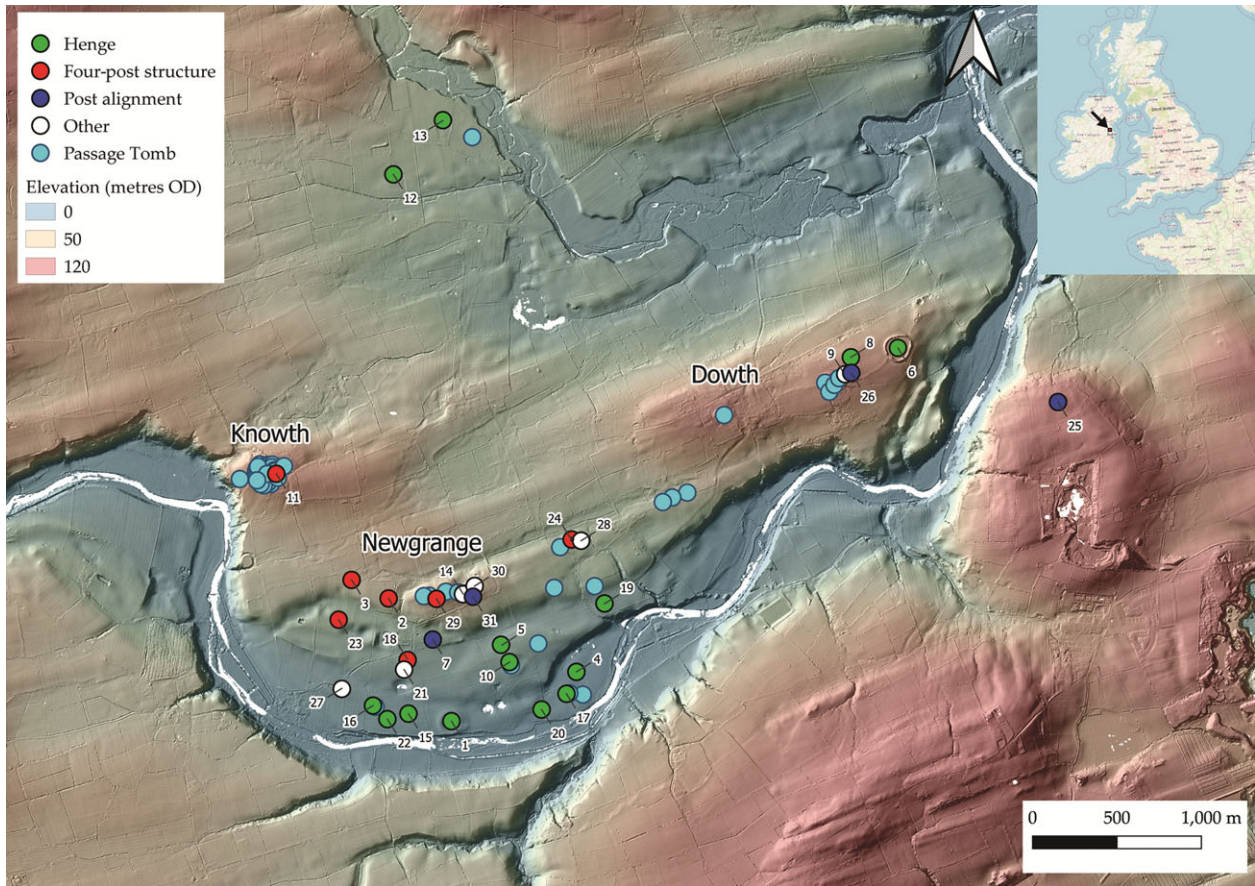


Fig. 1.

LiDAR-based 32-direction hillshade showing potential late Neolithic sites. Passage tomb and probable passage tomb locations also marked. Elevation data over 32-direction hillshade. For key see Table 1 (LiDAR data courtesy of Meath County Council)

medieval period. These dates are summarised in Smyth (2009, appendix iv).

THE 'EMBANKED ENCLOSURES' OR HENGES OF BRÚ NA BÓINNE

The class of monuments known in Ireland as 'embanked enclosures' are generally considered to be analogous to British henge monuments (Stout 1991; Condit & Simpson 1998; O'Sullivan *et al.* 2012). In form these mostly comprise large (140–200 m), saucer-shaped earthen enclosures, most of which are greatly denuded with surviving banks significantly less than 1 m in height. They are predominantly located on the lower terraces of the Boyne and incorporate a gentle to moderate slope, often facing towards water (*cf.* Richards 1996).

In her comprehensive (for the time) review of the Boyne embanked enclosures, Stout (1991) suggested that these monuments did not have internal ditches as in classic British henge monuments but were, instead, formed by scarping out an area internal to the line of the bank in order to create material for bank construction. This ditchless form has become widely accepted as normal for Ireland (eg, Harding 2003, 19) and has led to comparison with British sites lacking a ditch such as Mayburgh, Cumbria (Topping 1992). While this does appear to be the case in some Irish sites (eg, Ballynahatty, Co. Down and Fourknocks, Co. Meath), geophysical survey (eg, Davis 2013; Davis *et al.* 2013, and unpublished data), aerial photography (Condit & Keegan 2018), and limited excavation (eg, Danaher 2005; 2007; Ó Donnchadha & Grogan 2010) have, in recent years,

TABLE 1: SITES MARKED IN FIG. 1

Site no.	Usual name	Site type	Alternative name	Means of discovery	Eastings (ING)	Northings (ING)	Elevation m OD
1	Site P	H	ME026-006	AP	300777	271961	11.63
2	NG16	4P		G	300404	272689	42.81
3	NG10	4P		G	300185	272799	42.97
4	Small enclosure ¹	H		AP	301517	272254	6.52
5	Site A1 ²	H		ALS	301071	272415	22.95
6	Dowth Henge	H	Site Q; ME020-010	Historic	303423	274176	57.98
7	ME019-129	PA	Great Rectangular Palisade ¹	G	300666	272446	27.53
8	ME020-083	H		G	303144	274120	65.94
9	DOW19	OT	Dowth rectangular structure	G	303111	274019	69.11
10	Site A	H	ME019-049002	Historic	301121	272312	21.47
11	Knowth four-post structure	4P	ME019-030033	E	299738	273429	66.54
12	Monknewtown Pond	H	ME019-015	Historic	300433	275204	29.51
13	Monknewtown Henge	H	ME019-016001	Historic	300726	275526	32.79
14	Newgrange pit circle	OT	ME019-044002	E	300845	272715	48.05
15	ME026-033	H	Dronehenge; Geometric Henge ¹	AP	300522	272006	14.1
16	ME019-094	H	Site LP2 ² ; Univallate Henge ¹	ALS	300312	272054	15.46
17	ME019-058002	H	Site B1 enclosure	ALS	301458	272124	6.69
18	ME019-067002	4P		AP	274176	274176	24.81
19	ME019-103	H	Site LP1 ²	ALS	272446	272446	20.4
20	Riverside Henge ¹	H		AP	274120	274120	7.11
21	Great Palisade ¹	OT		AP	274019	274019	23.3
22	Hidden Henge ¹	H		AP	300397	271974	13.36
23	NG39	4P		G	300108	272563	30.53
24	DOW61	4P		G	301489	273039	35.41
25	OLD12	PA		G	304372	273854	92.02
26	DOW16	PA		G	303147	274027	68.24
27	NG51	OT		G	300127	272153	18.23
28	DOW62	OT		G	301545	273032	34.23
29	ME019-046005	4P	Newgrange Western Circle	E	300673	272704	54.3
30	Newgrange cursus	OT	ME019-044001	Historic	300912	272776	46.48
31	Pit circle avenue	PA		G	300892	272690	47.57

Means of discovery: AP = aerial photography; G = geophysics; E = excavation; ALS = airborne laser scanning (LiDAR). Other sites were recorded historically.

Site type: H = henge; 4P = four-post structure; PA = post alignment; OT = other.

¹Site name after Condit & Keegan (2018).

²Site name after Davis *et al.* (2013).

shown the situation to be much more complex with a number of sites now shown to have at least internal and, in some cases, external ditches.

Most Irish sites appear to possess only a single opening; however, both Dowth Henge and Newgrange Site P have indications of dual opposing entrances. The lack of *any* obvious opening in many of these sites is problematic but may indicate that the original entrance was relatively unelaborated, perhaps just a narrow break in the bank as appears to be the case in the west of Newgrange Site P. Similarly, at Tonafortes, Co. Sligo, Danaher (2007, 46) describes the entrance as comprising ‘an 8.2m-wide undug causeway . . . [with] no other associated features’. It is also possible that the lack of obvious entrance features is indicative of deliberate ‘blocking’ of entrances as sites fell from use (*cf.* Brophy & Noble 2012). The status of these monuments in Ireland is far from clear, with a wide-ranging review by Condit and Simpson (1998) identifying a very broad spectrum of potential ‘hengiform’ sites; to some extent this emphasises the point eloquently made by Alex Gibson (2012): that archaeologists can no longer clearly define what a henge actually is.

ARCHAEOLOGICAL PROSPECTION IN BRÚ NA BÓINNE: LIDAR AND AERIAL SURVEY

Prior to 2010 there were four recorded embanked enclosures/henge monuments in the wider Brú na Bóinne landscape: the Monknewtown Henge, partially excavated by Sweetman (1971; 1976) and subsequently largely destroyed; Sites A and P between Newgrange and the Boyne; and Dowth Henge (more rarely referred to as Site Q) to the east. The anomalous ‘ritual pond’ at Monknewtown is also a developed monument of this class, comprising a high enclosing bank surrounding a sunken, water-retaining central area. A radiocarbon date of 2847–2469 cal BC was obtained from a core through the waterlogged external ditch fill (Beta-288747; 4050±40 BP: Davis *et al.* 2010; recalibrated using IntCal20: Reimer *et al.* 2020). Sites A and P are similar in gross morphology, both being shallow and dish-shaped with no topographic evidence of either an inner or outer ditch or of internal scarping. They are flattened to their western side, possess broad, low banks, and each also includes an unusual annex to the eastern side, creating an additional defined space between the main enclosure and an apparent entrance (Stout 1991;

O’Sullivan *et al.* 2012; Davis *et al.* 2013). Site A encloses a substantial mound, most likely a passage tomb, but interpretation of the site is hampered by significant damage that occurred in the 1960s (O’Kelly *et al.* 1978, 50). While Dowth Henge is also flattened to one side (the south-west) it is substantively different from the other recorded Boyne sites, both in terms of its landscape position and gross morphology: it is situated in an elevated position above the Boyne and has substantial, well-preserved banks, dual opposing entrances and clear evidence of internal scarping. Arguably, however, the eccentric ovoid form seen at Dowth Henge is equivalent to the primary phase of Sites A and P (and of site ME026-033 – see below), representing the outline of the enclosure plus annex (Fig. 2).

LiDAR analysis in 2010 identified a further four possible henge monuments (Table 1; Fig 1: Sites 8, 9, 13 & 19) between Newgrange and the River Boyne (O’Sullivan *et al.* 2012; Davis *et al.* 2013), some of which have subsequently been confirmed by aerial photography (Condit & Keegan 2018). The same programme of research also identified a fifth site of this type at Carranstown, Co. Meath, a further 6 km south-east of Newgrange, midway between the cluster of sites in Brú na Bóinne and a second group of at least three henge monuments associated with the passage tomb cemetery at Fourknocks, Co. Meath (Stout 1991; O’Sullivan *et al.* 2012).

Aerial photography has contributed significantly to our understanding of the construction of these monuments, especially in the context of Collins’s (1957) excavations at the Giant’s Ring, Ballynahatty, Co. Down. Collins proposed a three-phase bank construction: an outer gravel ‘guide’ enclosure (most likely an early construction phase), insubstantial but defining the periphery of the bank; the main body of the bank made from earth and stone; and a boulder revetment placed on the inner shoulder of the monument (Fig. 3). Elements of this phased construction are apparent in aerial images of Site P taken over several decades. While the main body of the bank is visible as a substantial parchmark, an outer parchmark enclosure can also be seen in dry years (eg, 2018; Fig. 3). At Site P, the eastern annex, rather than being continuous with the main bank, is instead an extension of the outer enclosure. The irregular nature of the parchmark, especially in the annex, may suggest a segmented construction technique, also argued by Condit and Keegan (2018, 85–9) for Site A. Aerial imagery



Fig. 2.

Henges/embanked enclosures in Brú na Bóinne: *top left*: ME026-033 ('Dronehenge'); transcribed from aerial photography; *top right*: Site P; *bottom left*: Site A; *bottom right*: Dowth Henge; 32-direction LiDAR hillshade overlain with outlines of henge Sites A, P and ME026-033 plus annexes (aerial photography © BlueSky 2018; LiDAR data courtesy of Meath County Council)

also suggests the presence of an opposing, unelaborated narrow western entrance at Site P, present as a break in the parchmark of the main bank (Stout 1991, 247), and an internal ditch, neither of which are evident in the LiDAR survey.

Aerial photography from 2018 (Condit & Keegan 2018; Ken Williams pers. comm.) has led to substantially more detail being visible for ME019-094 (Site LP2: Davis *et al.* 2013) in addition to the identification of at least one, and up to four, previously unidentified monuments probably in this class.

The most striking of these new discoveries has become colloquially known as 'Dronehenge' (Murphy 2019) owing to it being first identified in drone imagery by local photographers Anthony

Murphy and Ken Williams. The site has subsequently been alternatively called the 'Geometric Henge' by Condit and Keegan (2018) but is referred to here by its SMR number, ME026-033 (Figs 2, 4 & 5). It possesses remarkable similarities to Site P (Fig. 5) and to ME019-094, the two sites located directly to its east and west (Fig. 4). The most unexpected new feature visible at both ME019-094 and ME026-033 is the segmented form of the main ditch circuits. In the case of ME019-094 (see further discussion below) the ditch comprises a single segmented circuit with suggestions of an external parchmark representing the low bank previously observed with LiDAR and most likely analogous to Collins' gravel enclosure; however, in ME026-033 these ditch sections are doubled, resulting

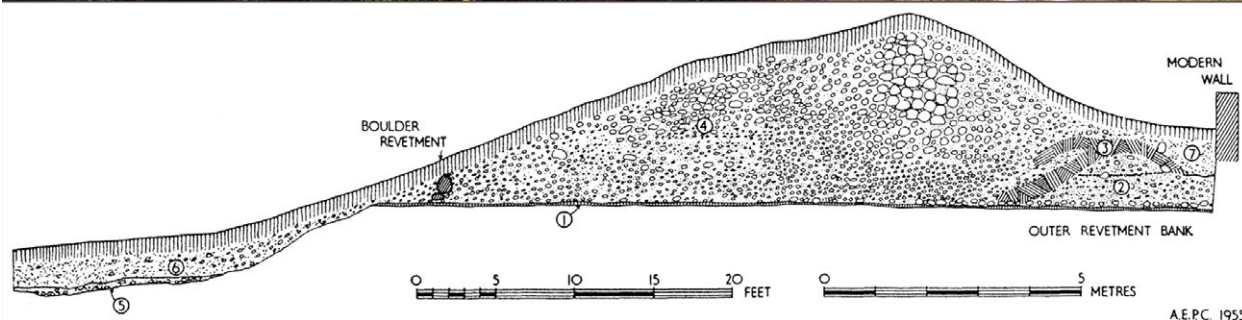


Fig. 3.

Top: Newgrange Site P, July 2018 (aerial photograph courtesy of Anthony Murphy); bottom: Section through bank at the Giant's Ring, Ballynahatty (after Collins 1957).

in a unique segmented double ditch form. As in Site P and Site A, an eastern annex is also evident at ME026-033, in this case as a separate section of segmented ditch using the same architectural motif as the main enclosure. The entrance into the annex is flanked by additional ditch sections, so that here there are three rather than two segments, with substantial pits or post-holes positioned either side, perhaps forming a façade.

Directly opposite the annex, in the position that in Site P is occupied by the narrow second entrance, is a rectangular structure. The inner (henge) side of this comprises a series of six substantial pits or post-holes

which form one side of a rectangular ditched structure with a narrow, extended entrance feature on the western side. Two large internal post-holes constitute possible roof supports and suggest this represents a roofed building. The series of six pits/post-holes corresponds with a low mound previously identified through LiDAR survey (Davis *et al.* 2010) and is evident as a parchmark in the 2018 data. This suggests a possible low bank at this point only, perhaps as an anchor for a substantial post setting. Outside the main segmented ditch are located two concentric pit/post circles which continue, at least partly, within the eastern annex. A series of less distinct anomalies present to

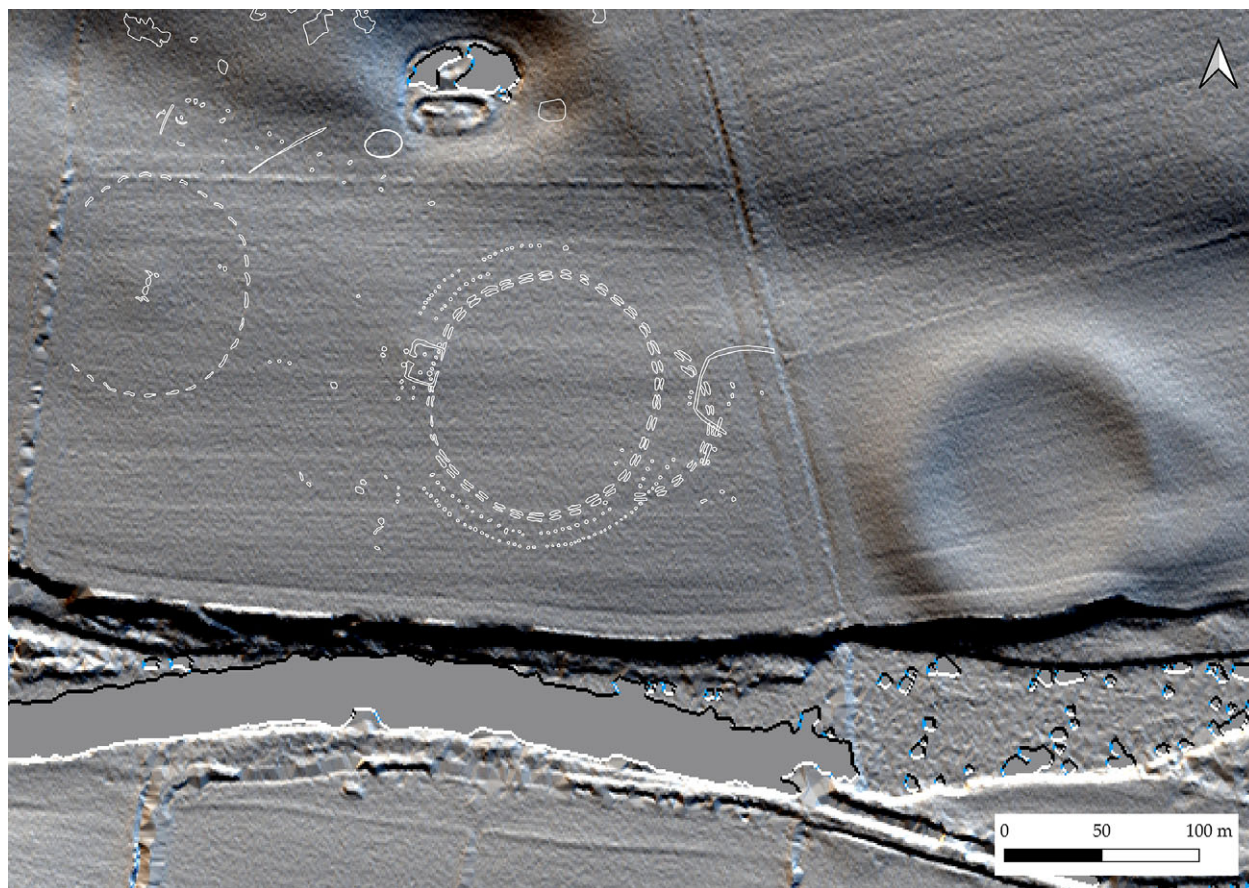


Fig. 4.

Brú na Bóinne henges: *left*: ME026-094 (Site LP2; Davis *et al.* 2013; ‘The Univallate Henge’; Condit & Keegan 2018); *centre*: ME026-033 (‘Dronehenge’); *right*: Site P. River Boyne to south of image (LiDAR 32-direction hillshade courtesy of Meath County Council).

the west of ME026-033 has been named by Condit and Keegan (2018, 58–62; figs 53–7) as ‘the Hidden Henge’; they consider these to form part of another large post-built enclosure. However, the exact nature of these features remains unclear and fragmentary.

Another cluster of sites has been identified *c.* 400 m to the east of Site P, adjacent to the probable passage tomb of Site B (Fig. 6). The low mound of Site B1 is located off-centre within a very low-profile embanked enclosure, first identified from LiDAR in 2010 (Davis *et al.* 2013). A clear enclosure ditch is evident at this site in the 2018 aerial imagery, positioned external to the previously identified bank. An additional large circular enclosure (‘The Riverside Henge’: Condit & Keegan 2018) is visible as a cropmark directly south-west of ME019-058002 and 400 m west of

Site P: this is the largest of all the Brú na Bóinne enclosures identified to date, with an internal diameter of 154 m. This site displays no evidence of any bank in aerial survey. A smaller enclosure (prosaically named ‘The Small Enclosure’ by Condit & Keegan 2018) is also visible as a cropmark north-north-east of ME019-058002, where the LiDAR survey shows it to be adjacent to a slight mound. This enclosure is anomalously small for an Irish henge monument and may represent the external ditch of a barrow, a number of which have been identified in geomagnetic survey further east along the river (unpublished data). This close spatial arrangement of an internally embanked site together with an apparently unembanked enclosure² offers a striking parallel to the Welsh sites of Llandegai A and B (Houlder 1968;



Fig. 5.

Left: ME026-033, otherwise known as ‘The Geometric Henge’ (Condit & Keegan 2018) or ‘Dronehenge’ (Murphy 2019) (transcribed from aerial imagery © BlueSky 2018 & from orthophotography provided by Ken Williams); *right:* Transcribed outline of ME026-033 overlain on Site P, rotation 10.8° anticlockwise. Scale identical

Lynch & Musson 2004; Gibson 2012a), the former of which is potentially early in date (Harding 2003, 15. NPL-221; 4420±140 BP, 2675–3515 cal BC; median probability 3110 BC; recalibrated with IntCal20: Stuiver *et al.* 2020). Both ME019-058002 and the Riverside Henge could be considered atypical henges, with Harding (2003) suggesting some of these stylistic traits (eg, external rather than internal bank as at Llandegai A) are likely to be early in the typological sequence of British and Irish henges.

HENGE MONUMENTS IN BRÚ NA BÓINNE: GEOPHYSICAL SURVEYS

To date only three of the embanked enclosures/henge monuments within Brú na Bóinne have been subject to geophysical survey using modern methods: ME019-094 (Site LP2; ‘Univallate Henge’), ME019-103 (Site LP1), and Dowth Henge (Davis *et al.* 2012; Davis 2013), with additional survey also covering the area of the Newgrange Pit Circle. The ‘Pit Circle’, excavated in part by O’Kelly *et al.* (1983) and Sweetman *et al.* (1985), has been interpreted by Sweetman (1997) as comparable to British henge monuments, despite its perimeter being comprised entirely of pits/post-holes. Geophysical surveys within Stout’s (1991) review, while innovative at the time, are not of sufficient spatial resolution to provide useful archaeological information.

At ME019-094 the slightly flattened ditch outline is clearly evident in the geomagnetic survey (Davis *et al.* 2013, 230), although the segmented form that is apparent in the aerial imagery is not clearly visible, but hinted at with the benefit of hindsight (Fig. 7). The most striking feature here is a NNE–SSW oriented linear anomaly within a central high resistance area. This is likely to represent a cut feature within the footings of a central mound. Given parallels with ME019-058002 and with Site A where probable passage tombs are enclosed by henge monuments this may represent the remains of a denuded passage tomb.

A further enclosure, ME019-103, initially described as Site LP1 (Davis *et al.* 2013; Fig. 1, Site 19; Fig. 8) is located *c.* 500 m north-east of Site B. Here, geophysical survey revealed weakly magnetic ditches both internal and external to the broad bank. These are not visible to the south where they may have been destroyed. To the east the monument is partly overbuilt by a small circular enclosure, which forms part of a substantial complex of probable later prehistoric features that extends east-north-east from here for almost a kilometre. This mirrors the situation noted by Gibson (2010, 245) at Dyffryn Lane, Pembrokeshire where the site remains a focus for ritual activity even after the construction of its closing central mound.

At Dowth Henge, multiple phases of geomagnetic survey have identified broad ditches both inside and

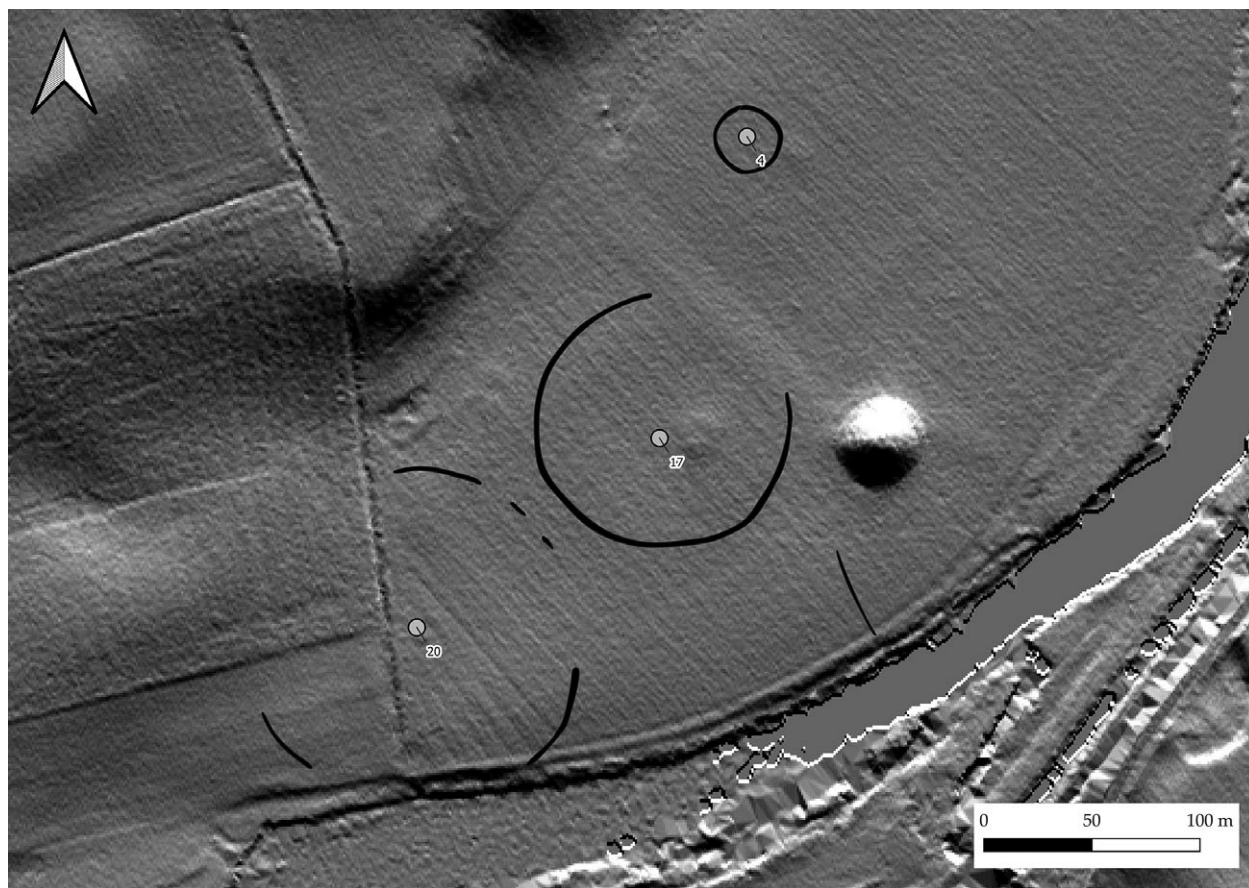


Fig. 6.

Presumed passage tomb of Site B, with mound and enclosure of Site B1 (ME019-058002) to west, 'Small Enclosure' to north and 'Riverside Henge' to south-west. Sites numbered after Table 1 (transcribed from aerial imagery © BlueSky 2018; Anthony Murphy 2020; 32-direction LiDAR hillshade, courtesy of Meath County Council)

outside the main enclosure (Davis 2013; Fig. 9). These appear to show clear interruption at both entrances, suggesting that these are both original features. Some confusion has arisen because of the construction of an ornamental 18th century 'tree ring' blocking the north-eastern entrance, the removal of which has caused extensive disturbance. The geomagnetic data shows berms both inside and outside the henge bank. For most of the perimeter the internal and external berms are comparatively narrow (*c.* 5 m); however, the external berm broadens to 12 m approaching the south-western entrance/egress (Davis 2013).

Within the henge enclosure, in addition to at least one roughly circular central pit or post arrangement, a pair of large pits or post-holes spaced 4.5 m apart is located directly in line with the south-west entrance.

Also central within Dowth Henge is a complex collection of elongated pits which may represent the footings of a demolished passage tomb similar to that centrally located within the Giant's Ring at Ballynahatty, Co. Down (*cf.* Hartwell 1991; 1998; 2002; Rassmann *et al.* 2019).

A second possible henge, ME020-083 (recorded in the SMR as a ring barrow), measuring 46 m in diameter with a broad internal ditch has been identified at Dowth, 200 m west of Dowth Henge adjacent to a complex of enclosures of unknown date. The most striking aspect of these associated features is a small rectangular structure, one side of which comprises a row of large post-holes, the other, two 'C'-shaped magnetic anomalies which are likely to represent heavily burned features (Fig. 10). This has obvious

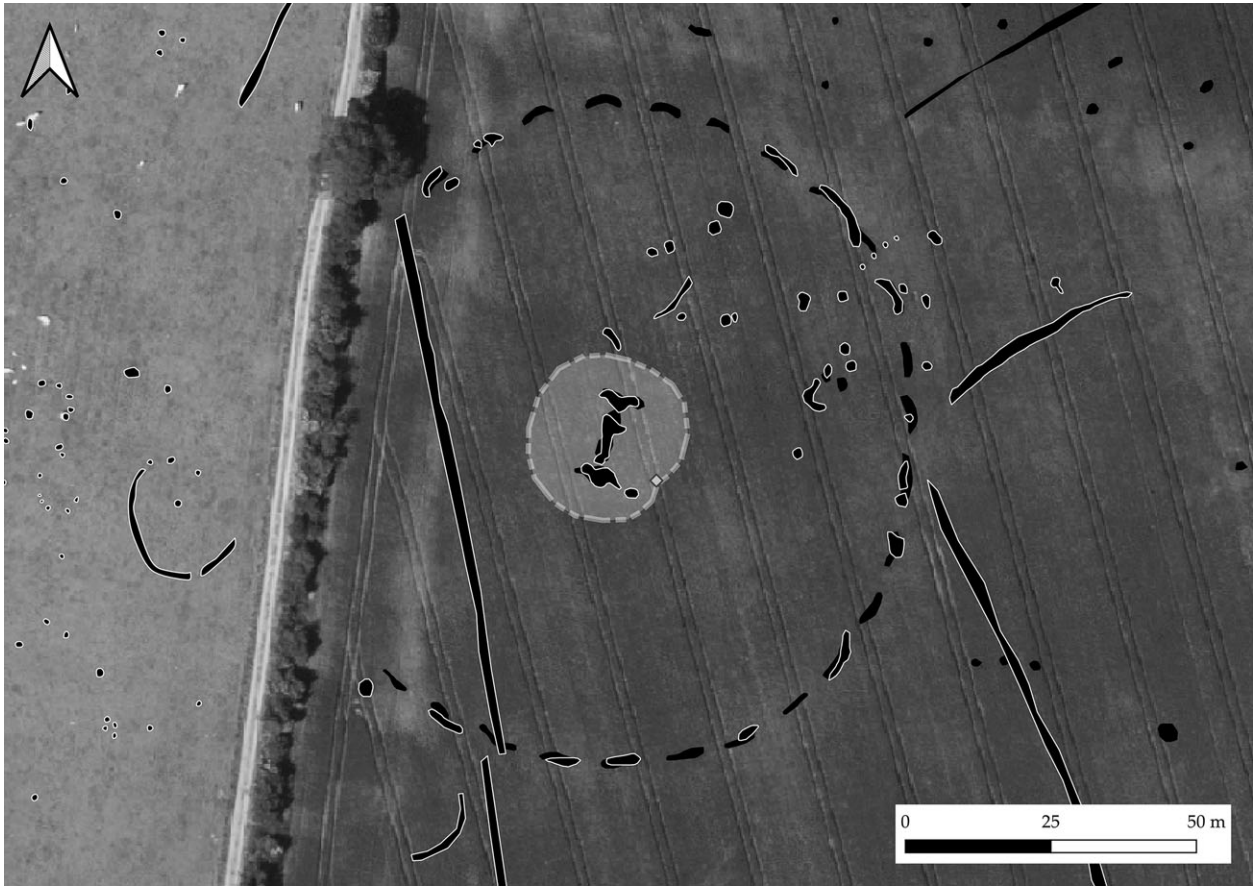


Fig. 7.

ME019-094 (Site LP2) Transcribed geomagnetic data (with white outline) overlying transcribed 2018 aerial imagery. Central shaded area represents limits of high resistance anomaly (geomagnetic survey, Kevin Barton; aerial imagery © BlueSky 2018, red channel only)

similarities to the structure identified by aerial photography at the western entrance of ME026-033.

Regional parallels: ME026-033

Segmented-ditch or causewayed enclosures are well-known in the early Neolithic period in Britain (Palmer 1976; Oswald 2001), with ‘formative henges’ (Harding 2003; Burrow 2010) such as Flagstones, Dorset (Woodward 1988; Healy 1997) and Stonehenge Phase 1 (Darvill 2006, 97; Darvill *et al.* 2012) sharing a similar construction technique with these earlier monuments. Similarly, some large henge enclosures such as the Ring of Brodgar (Downes *et al.* 2013, 110) and Mount Pleasant (Linford *et al.* 2019; Greaney *et al.* 2020) appear to continue this

tradition of irregular segmented ditches into the late Neolithic. There is still some debate as to the validity of ‘formative henge’ as a site type, in particular with the chronological implications of the word ‘formative’ – implying that these pre-date conventional henge monuments (Gibson 2012). Given this lack of clarity it might be more prudent to describe these as ‘atypical henges’.

A number of the Boyne monuments likely belong in this atypical group. The extreme regularity and uniformity of the short double ditch segments of ME026-033 finds no clear parallels in either the British or Irish Neolithic, aside from its neighbour ME019-094, which has single regular segments of the same form. The angular form to the north of ME026-033 may argue for the ditches having been

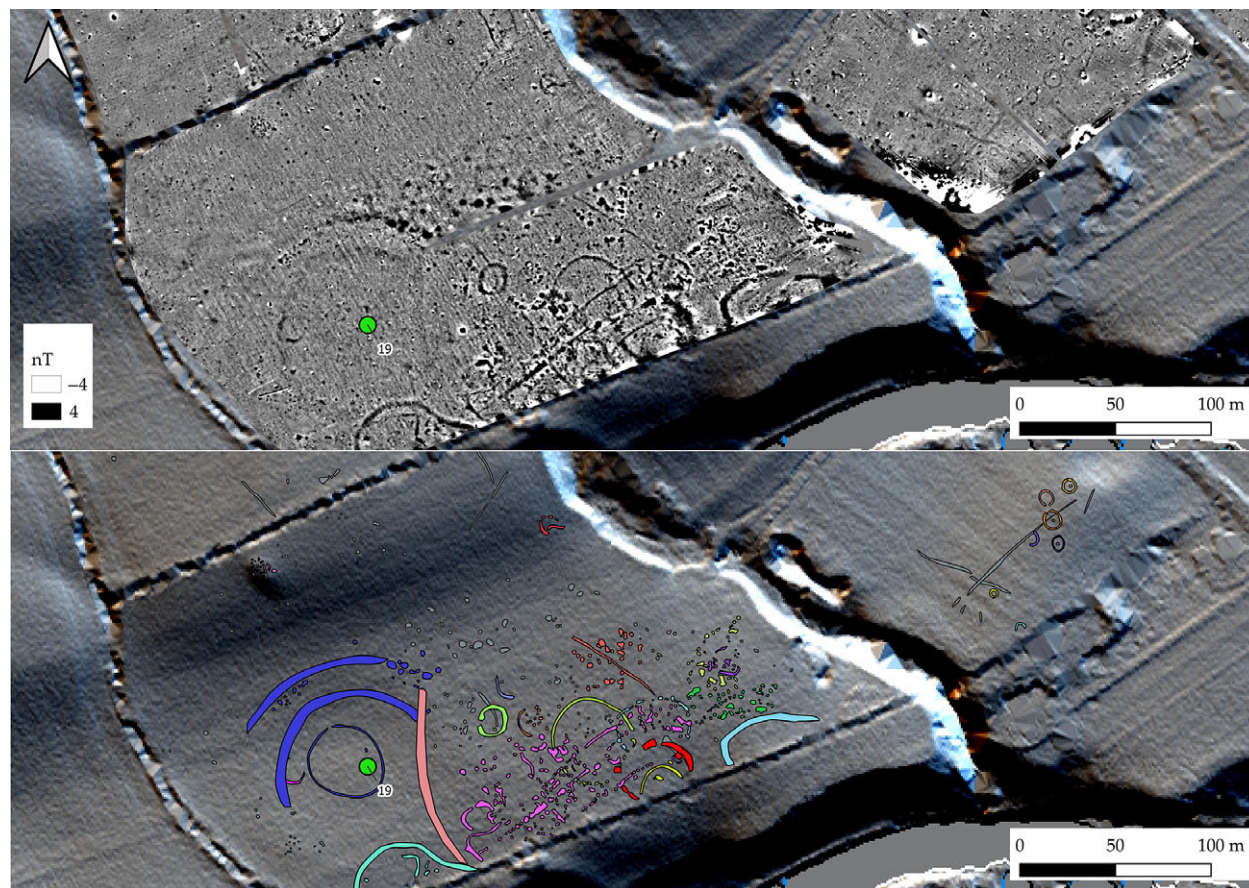


Fig. 8.

ME019-103 (Site LP1), transcribed geomagnetic survey showing internal and external ditches, absent to south. Complex of enclosures obscuring eastern perimeter (LiDAR 32-direction hillshade, data courtesy of Meath County Council)

dug in gangs rather than as a single unified project, as has been suggested in causewayed enclosures (Startin & Bradley 1981).

There are many parallels for henge monuments enclosing either stone or timber settings; however, the motif of a ditch within a palisade is unusual (Gibson 2004), although a timber circle was constructed around the small henge at Forteviot (Henge 1; Brophy & Noble 2012) and Milfield North was surrounded by a ring of pits (Harding 1981). If the palisade at ME026-033 is viewed as a precursor to bank construction, mirroring as it does the position of the earthen bank at Site P, then parallels could also be drawn with British sites where sub-bank enclosures have been identified. These

include Meini Gwyr, Carmarthenshire (*cf.* Darvill & Wainwright 2003, 36–8) where geophysical survey revealed a series of pits/post-holes described by the authors as ‘more or less under the centre of the bank’ (*ibid.*, 29) and Blackhouse Burn, Lanarkshire where the largely stone bank overlay and incorporated a timber palisade, dating to the later Neolithic (GU-1983; 4035 ± 55 BP; 2864–2410 cal BC; Lelong & Pollard 1998; recalibrated using IntCal20; Stuiver *et al.* 2020). Recent research at Durrington Walls (Gaffney *et al.* 2018, 264–6) has also demonstrated that an earlier monument comprising a series of substantial post-holes was overbuilt by and perhaps formalised by the construction of the later earthen henge enclosure.

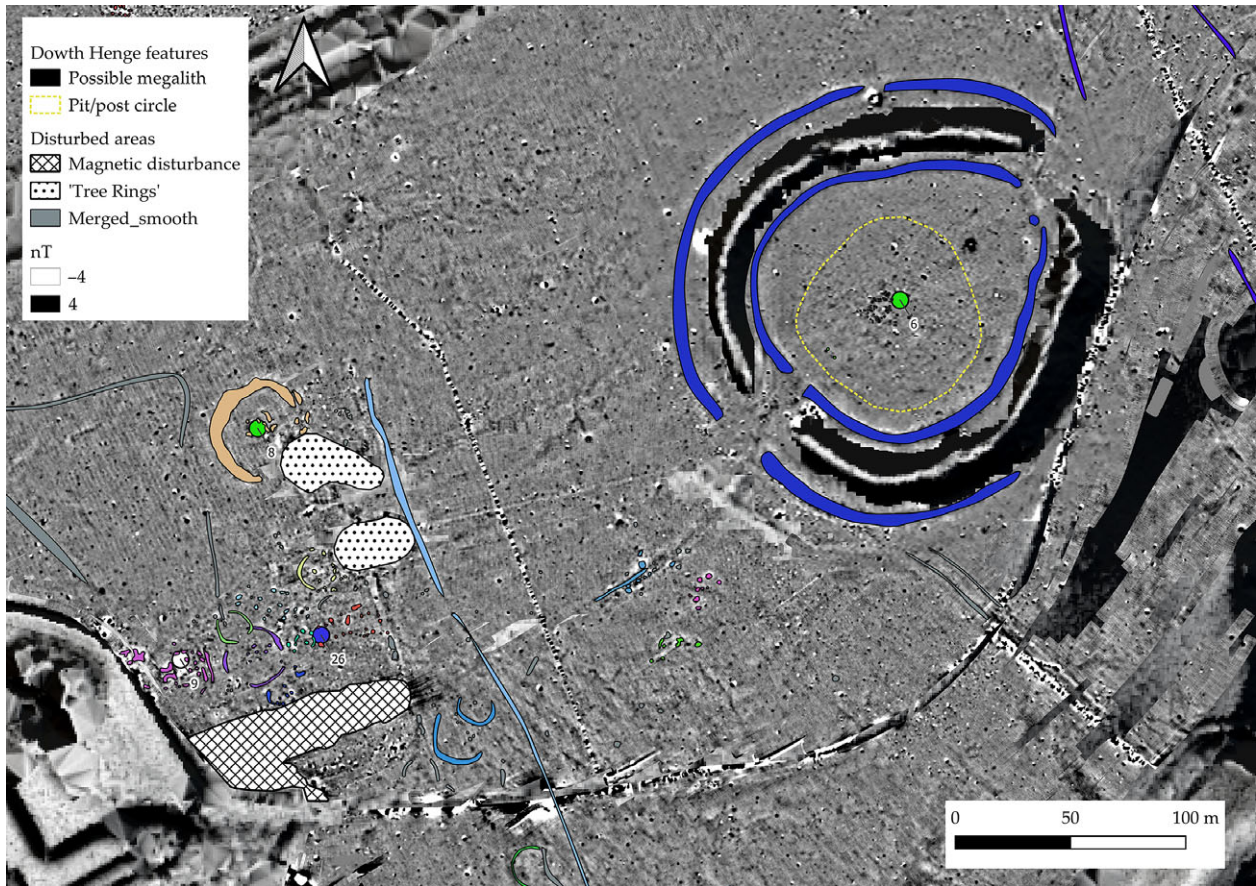


Fig. 9.

Douth Henge and wider area, transcribed geomagnetic data. ME020-083 visible to west of henge (LiDAR 32-direction hillshade courtesy of Meath County Council overlain by Local Relief Model, courtesy of Ralf Hesse)

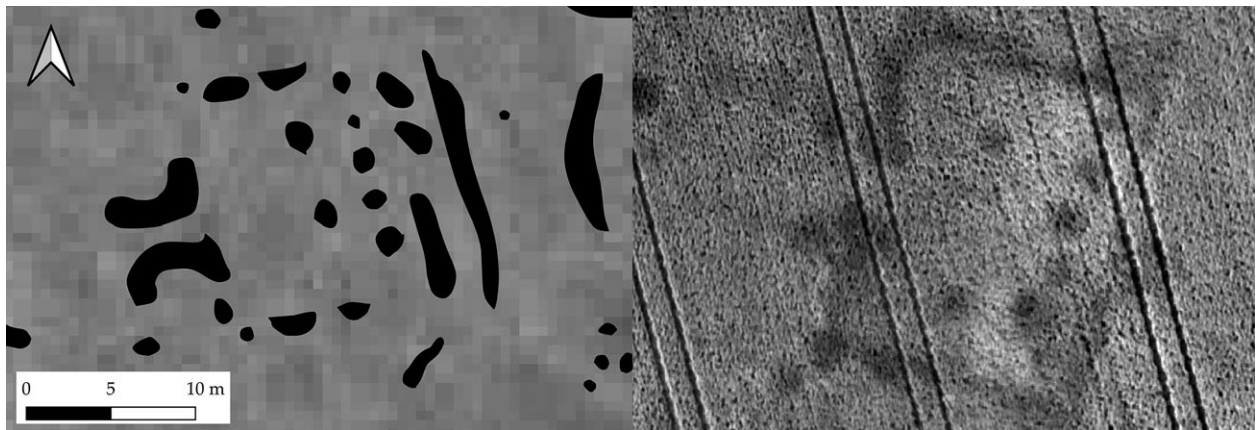


Fig. 10.

Left: Douth rectangular structure (Fig. 9; transcribed geomagnetic data); right: rectangular structure at western side of ME026-033, same scale (aerial imagery ©BlueSky 2018)

EMBANKED ENCLOSURES & STRUCTURAL DEVELOPMENT

From the range of earthworks preserved and evidence from aerial and geophysical survey it is possible that some of the enclosures in Brú na Bóinne were only ever surrounded by low banks and that the raising of banks to form substantial earthworks was limited to only a few monuments. However, once again excavation is required to understand fully the sequence of development at these sites.

At Site ME019-094 (Site LP2; Fig. 7) geophysical survey and aerial photography imply the monument had very insubstantial banks only, the external parchmark suggesting a bank width of *c.* 6.5 m, comparable to the outermost parchmark at Site P. At ME026-033 there is no evidence that the monument was ever embanked; the same is true of the ‘Riverside Henge’. It is suggested that where banks did occur they existed at most in the form of Collins’s (1957) outer gravel ‘guide enclosure’, most likely representing an early structural phase. While these enclosures are clearly delimiting space, they are unlikely for the most part, to be controlling any visual aspect of the landscape nor could they have done so without significant additional timber construction. An exception to this is Dowth Henge which, owing to its elevated position and substantial banks, offers a truly enclosed space, visually isolated from the outside world.

Site P and ME026-033 possess a remarkable degree of similarity to one another (Fig. 5) and differ principally in that Site P is enclosed by at least two phases of earthen bank while ME026-033 is likely to have instead been enclosed by timber uprights, perhaps planked or connected with screens. It is also possible that the segmented ditches at this site could have held short lengths of palisade or planking. The bank at Site P may effectively be formalising the double post enclosure seen at ME026-033. The principal difference is with the structure of the annex: at Site P this is preserved as an earthen rampart while at ME026-033 the post circuits run within the segmented ditch which defines the innermost boundary of the annex. Dowth Henge sees still further elaboration in the form of more significant internal and external ditches, two clear and opposing entrances, and substantial raised banks. This may imply that it falls late in the construction sequence of henges in Brú na Bóinne, in keeping with generally accepted dating evidence within a British context (Gibson 2012a, 13–20), or that

Dowth Henge has undergone significant modification and embellishment since its original construction.

As regards formal access to the interior of these enclosures, at the Newgrange Pit Circle, Site P, ME026-033 and at Dowth Henge, there are clearly formalised points of access/egress. At Sites P and Dowth Henge there are two apparent openings; however, in some cases the boundaries are essentially permeable at any point without palisading and planking. It may be that, as at the western opening of Site P, these formal access points exist but are unelaborated and potentially very narrow, or that they have been deliberately blocked upon the site’s abandonment (*cf.* Brophy & Noble 2012).

From currently available data it is impossible to say how many of the Brú na Bóinne henges were in concurrent use (or indeed, what or when that use might have been); however, the large number of these sites in close proximity suggests that perhaps each was used for a limited period only rather than them all being constructed and in use simultaneously. In terms of palisaded structures, these would have had a finite lifespan. The frequently-cited estimate of Wainwright and Longworth (1971, 224–5) of a rate of wastage of 15 years per inch for oak posts means that without replacement of posts it is likely that an enclosure of this type would be in substantial disrepair within a few centuries at most. Beyond this lifespan perhaps some of these monuments were further commemorated by the raising of significant earthen banks, emphasising the line of the former palisade.

TIMBER ARCHITECTURE: LATE NEOLITHIC/EARLY BRONZE AGE FOUR-POSTER STRUCTURES

Aerial and geophysical surveys to date have identified at least six four-poster or ‘square-in-circle’ monuments within Brú na Bóinne (Fig. 11), in addition to the ones excavated at Knowth (Eogan & Roche 1994) and possibly at Newgrange (Sweetman *et al.* 1987). One of these has recently been identified through aerial survey (ME019-067002; K. Williams pers. comm.; Condit & Keegan 2018, 25–32), with the other five identified through large-scale geomagnetic survey. Most of these monuments are in the area between Knowth and Newgrange and all are aligned in an easterly or south-easterly direction (Table 2). These have been referred to as possible mortuary enclosures (eg, Hartwell 1991, 11;

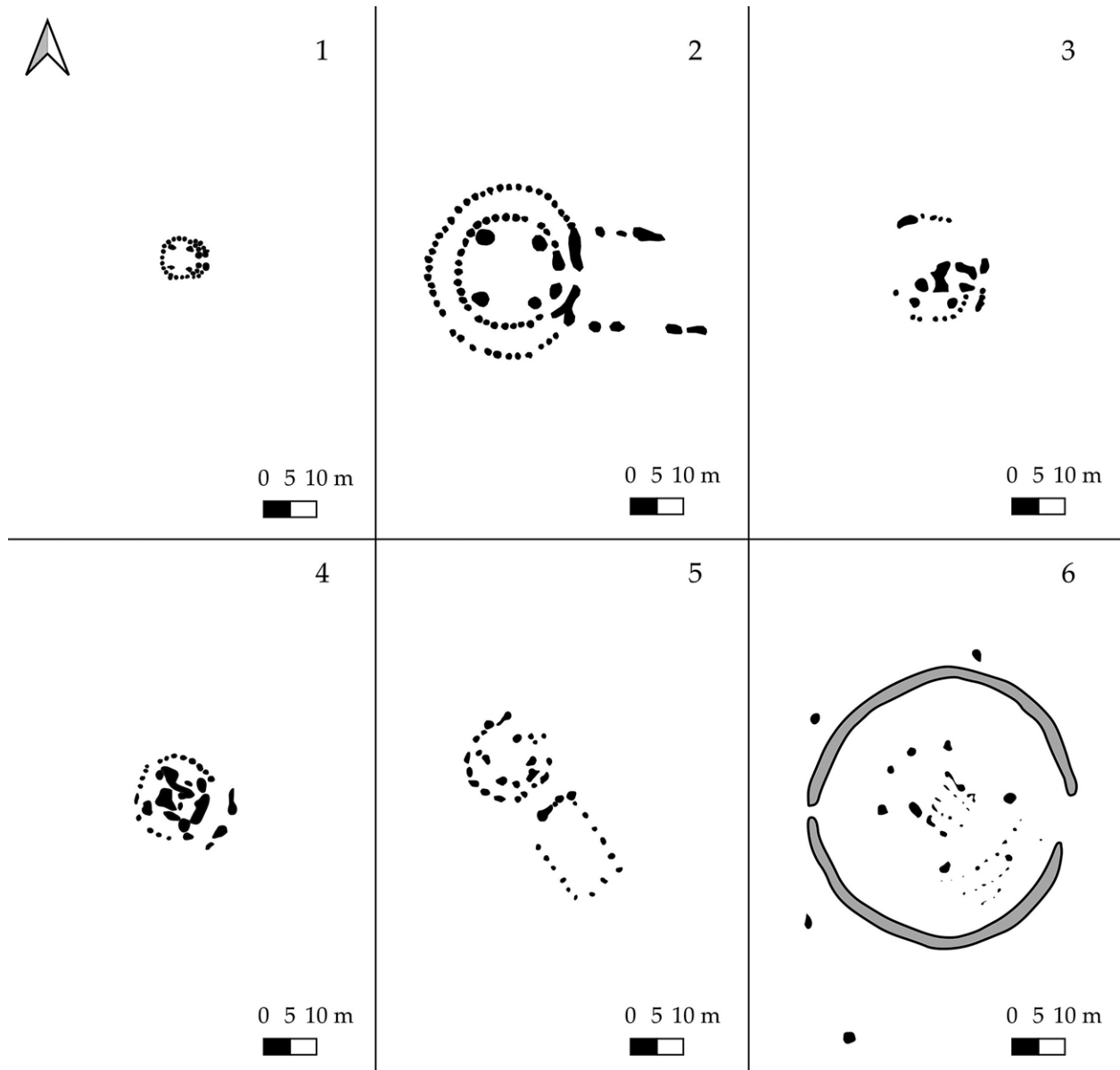


Fig. 11.

Brú na Bóinne four-poster structures drawn to same scale. 1. Knowth four-post structure, excavated outline (redrawn after Eogan & Roche 1994); 2. ME019-067002 (transcribed from aerial image); 3. DOW61; 4. NG39; 5. NG10; 6. NG16 (transcribed from geomagnetic data)

Condit & Keegan 2018, 25) although interpretation of them is still very much a matter for debate (see discussion in Carlin & Cooney 2017).

In addition to the common motif of a central rectangular setting that would have comprised four substantial posts, all display a degree of enhancement

on one side, usually including a pair of post-holes or pits and possibly reflecting an entrance arrangement. In the excavated example at Knowth, this comprises an eastern post-built 'porch' (Eogan & Roche 1994) or embellished façade, with ME019-067002 and NG10 also showing evidence of extended entrance

TABLE 2: APPROXIMATE DIMENSIONS AND AZIMUTH OF FOUR-POST STRUCTURES IN BRÚ NA BÓINNE

Site no.	Site name	Length	Width	Azimuth
2	NG16	16.5	18.2	137.5
3	NG10	5.2	6.9	143.4
11	Knowth 4-post structure	3.5	3.9	91.5
18	ME019-067002	10.4	11.7	95.5
23	NG39	7.3	8.6	115.8
24	DOW61	7.2	9.5	92.8

In all cases the central four-post setting is laterally compressed.

ME019-046005 excluded as it is not possible to determine dimensions of either four-post setting or azimuth.

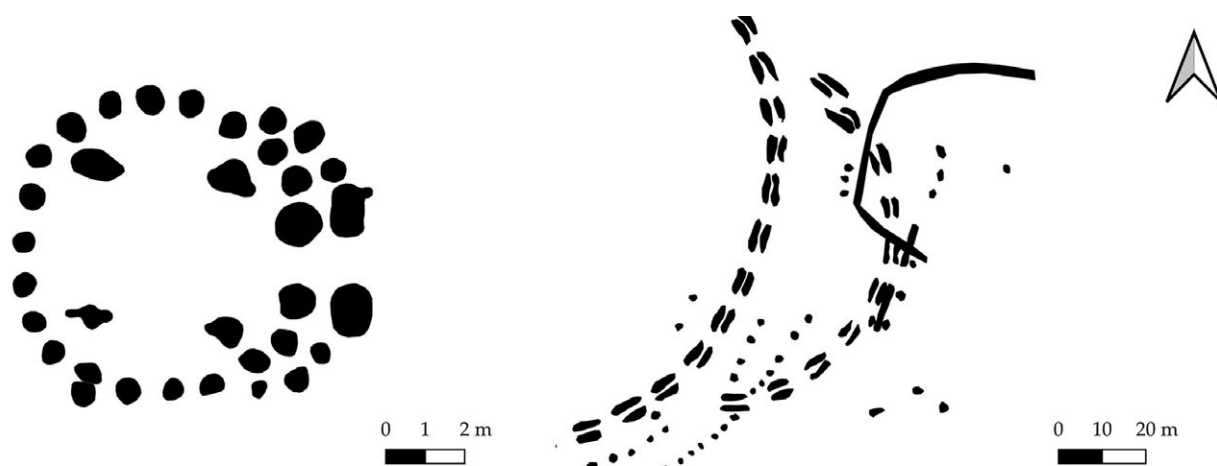


Fig. 12.

Left: Knowth four-post structure (redrawn from Eogan & Roche 1994); right: ME026-033 – eastern annex (transcribed from aerial photography)

avenues to the east and south-east respectively. Elsewhere in Ireland such aggrandisement of the eastern and south-eastern sides of monuments of this period has also been noted (eg, Ballynahatty; Hartwell 1998; 2002; Balgatheran, Co. Louth; Ó Drisceoil 2009). The enhancement of entrance features seen at these sites could be considered analogous with the annex structures seen at Site A, Site P and ME026-033 (Fig. 12).

In ME019-067002 the post-circle is doubled, with a parchmark between the two circuits suggesting the presence of a bank. This monument appears to be enclosed by a closely-spaced oval palisade *c.* 95 m in diameter (Condit & Keegan 2018, 29). DOW61 and NG39 also appear to possess a double circuit of posts although only the façade is visible in geomagnetic survey. This suggests the inner post-ring may have been burned or have burned material

incorporated into its fill, as at Ballynahatty (Hartwell 1998). This is also the case at the partially excavated Western Circle at Newgrange (Sweetman *et al.* 1987, 291), where none of the outer (Group 4) post-holes included packing stones or larger pieces of charcoal. As at ME019-067002, DOW61 appears to be set within a larger enclosure and possesses traces of an unusual ‘double-ditched entrance’ feature (see Fig 17), discussed further below.

The final example of these four-post structures (NG16) represents a greatly embellished form. This large, circular enclosure appears to be open to the east, facing towards Newgrange (Figs 11 & 13) and may have an opposing entrance to the west (Rassmann *et al.* 2019). The central area comprises two parallel short settings of pits or post-holes, oriented in a north-west to south-east direction and enclosing a secondary arrangement of smaller pits/post-holes. To the

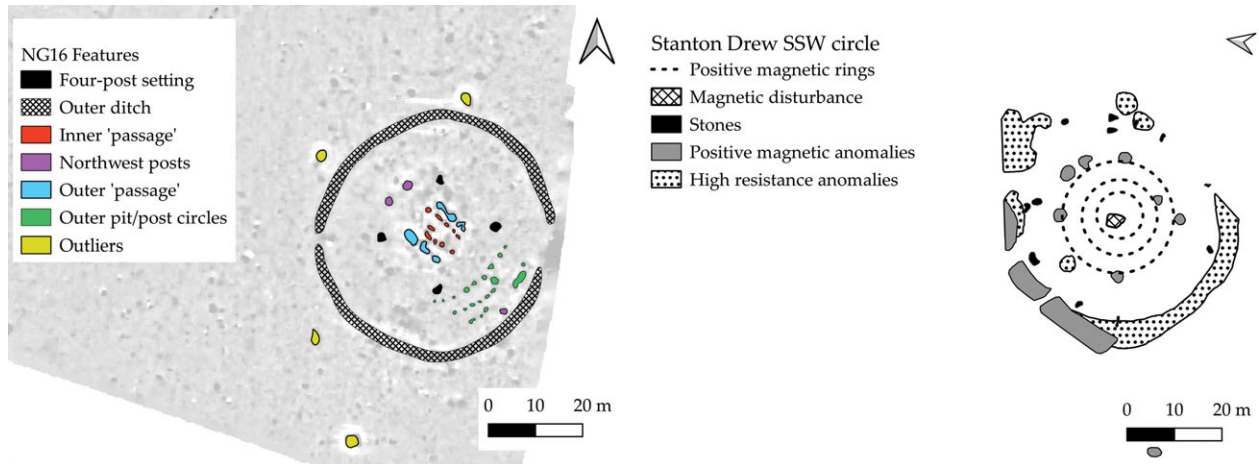


Fig. 13.

Newgrange Site NG16 (transcribed geomagnetic data) compared with SSW circle at Stanton Drew; identical scale (redrawn after David *et al.* 2004)

north-west of these lie two large pits or post-holes, mirrored at Balgatheran Building 3 among other sites (see Ó Drisceoil 2009, 94; Smyth 2014, 88) which, along with the central setting, create a defined axis of symmetry. To the south-east are traces of up to three concentric rings of pits or post-holes, flattened to this direction. This is paralleled in ME019-067002 and also at BHN6 at Ballynahatty where the excavated post-holes towards the entrance area were packed with burned material and charcoal (Hartwell 1998). The four-post arrangement at NG16 measures 18.2×16.5 m, approximately 1.5 times the size of any other similar structure in Ireland. Externally NG16 is surrounded by several highly magnetic anomalies, perhaps large post-holes or stone sockets, similar to outliers in a stone circle. This ‘lithicisation’ of timber settings has also been noted at Stanton Drew SSW (Fig. 13; David *et al.* 2004), Machrie Moor (Haggarty 1991), and on a smaller scale at Knowth (Eogan & Roche 1997, 103). Preliminary archaeo-astronomical assessment (Frank Prendergast pers. comm.) suggests the central setting of NG16 is, like Newgrange, aligned on the winter solstice sunrise. While the east–west orientation of the external ditch is shared with the ‘Great Linear Palisade’ (see below) and, as noted by Leigh *et al.* (2018), closely aligns on the spring and summer equinox sunrises, this may be a consequence of its position relative to Newgrange as opposed to a deliberate astronomical trait (*cf.* Ruggles 1997).

Regional parallels: Newgrange Site NG16

The architectural motif of squares within circles has been elaborated upon in detail elsewhere (eg, Pollard 2012, 100–2). Likewise, late Neolithic four-post structures have been reviewed elsewhere in both Scotland (Noble *et al.* 2012) and in Ireland (in Brophy 2016, 217–20; Smyth 2014; Carlin & Cooney 2017, 42–6).

The scale and complexity of the Newgrange site sets it apart from other four-post structures thus far recorded within Ireland and Scotland. However, geophysical survey at the SSW circle at Stanton Drew (David *et al.* 2004; Linford *et al.* 2018) provides a close parallel. Here, the outer stone circle (*c.* 44 m diameter) encloses three concentric rings of magnetic anomalies, interpreted as pits filled with ‘magnetically enhanced material’ (Fig. 13; David *et al.* 2004, 350). The Stanton Drew enclosure incorporates a series of larger anomalies on the boundary of the outermost ring, four of which form a large square setting with sides measuring *c.* 17 m in length. Further anomalies to the north-east create an axis of symmetry, as seen in some Irish four-post structures (see Smyth 2014, 88).

Another possible parallel can be seen at Coneybury Henge, Wessex (Richards 1990, 123–58; 259; Pollard 2012, 102). Here, a central linear setting of six post-holes and associated shallow features was excavated, with an additional two, more closely spaced post-holes apparently ‘flanking the axis of symmetry’ of the central setting (Richards 1990, 137), in this case

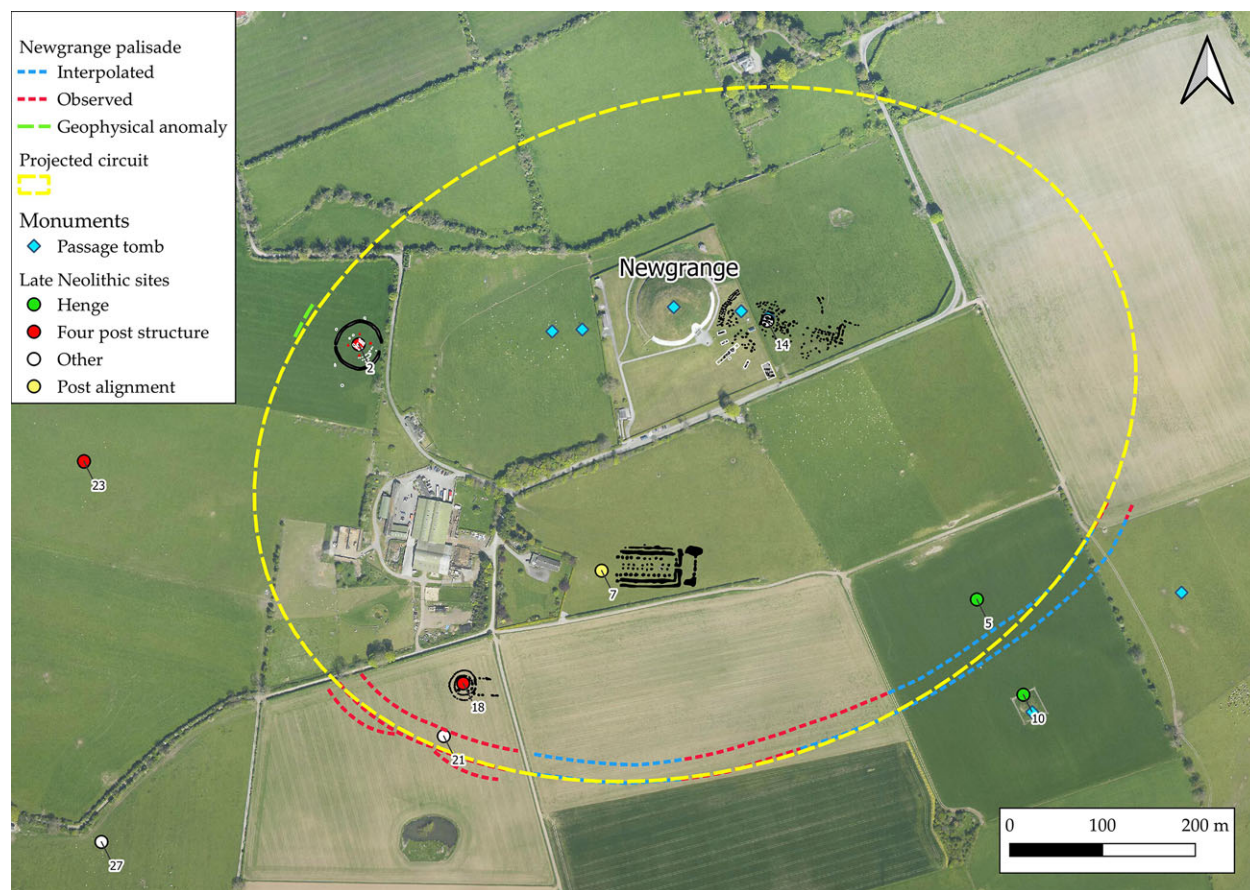


Fig. 14.

Newgrange and the ‘Great Palisade’. Circuit marked in red is recorded within aerial imagery; blue interpolated; green section visible in geomagnetic survey. Dashed yellow line is a projection of potential entire circuit (aerial imagery ©BlueSky 2018)

directly aligned with the entrance of the enclosure to the east. The central setting at Coneybury was surrounded by a ring of shallow post-holes. Based on ceramic evidence, Ellison (1990, 149) suggests that the enclosure at Coneybury post-dates the central setting. It is notable that these two parallels belong not to the Irish or Scottish corpus, but to southern England.

TIMBER ARCHITECTURE IN BRÚ NA BÓINNE: PALISADED ENCLOSURES

As well as the earthen enclosures identified or confirmed by aerial survey in 2018 perhaps the most remarkable discovery was an enormous palisaded enclosure that appears to enclose a large part of the Newgrange precinct (Figs 14 & 15). Dubbed by

Condit and Keegan (2018, 33) ‘The Great Palisade’, they suggest this could form a triple-palisaded enclosure approximately 900 m on its long axis with a post spacing of 1.5–2 m. A short section of palisade with similarly spaced magnetic anomalies is visible due west of Newgrange, potentially encompassing site NG16. The visibility of some sections of this palisade within the geomagnetic survey perhaps echoes the situation at Mount Pleasant where some portions of the palisade were destroyed by fire (Wainwright 1979, 240).

While Neolithic palisaded enclosures are well-documented from Britain (Whittle 1997; Gibson 1998a; 1998b; 2004; Hale *et al.* 2009; Noble & Brophy 2011; Millican 2016, 47–52) and to a lesser extent Ireland (Grogan & Roche 2002), the scale of this monument is exceptional. Again, detailed discussion is

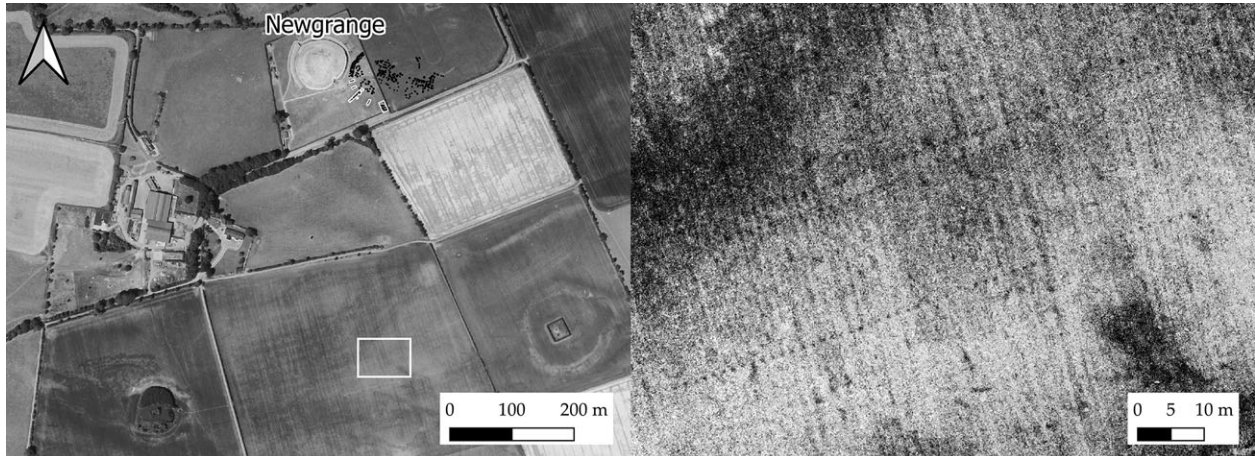


Fig. 15.

Detail of the 'Great Palisade' showing three palisade circuits (aerial image courtesy of Anthony Murphy, May 2020)

hampered by a lack of excavation and hence chronological control: in scale and complexity the only other parallels in Ireland are the Iron Age earthworks of The Dorsey and the Black Pig's Dyke, gigantic palisaded earthworks, the function of which remains enigmatic (Lynn 1977; Hurl & McSparron 2004). While the focus of the Newgrange palisade on so significant a Neolithic complex might argue for a late Neolithic date, there is considerable evidence of Iron Age activity within Brú na Bóinne (eg, Eogan 1968, 365–73; 1974, 68–87; 2012; Carson & O'Kelly 1977; Bendry *et al.* 2013) and the idea that monuments might have been either modified or constructed during this period can certainly not be discounted.

The only Neolithic palisaded enclosure of comparable size across Britain and Ireland is Hindwell in Wales, with approximate dimensions of 880 m east–west by 540 m north–south and enclosing an approximate area of 34 ha (Gibson 1998a). It is significantly smaller than the projected area of the Newgrange enclosure (55 ha). Considering that Hindwell itself is perhaps four times the size of its nearest rival (*ibid.*, 76), this represents timber monumentality on a massive scale and complexity. At Hindwell, for a single circuit of palisade, Gibson (1999, 154) estimates construction materials in the order of 1410 posts and 6300 tonnes of oak. He also suggests that enclosures of this type, where posts are not contiguous, are likely to have been planked in order to effectively manage access to the interior,

assuming this was an important part of their function. This would require further significant timber resources. The origin of such prodigious quantities of timber remains unclear but it is unlikely to have been available from within the immediate area of Brú na Bóinne (Davis 2017). As such, its felling, splitting, and transport to site may well have been as monumental a task as that of quarrying and moving orthostats and kerbstones in previous generations.

The closest parallels to the massive Newgrange enclosures in the Irish Neolithic are the timber structures at Ballynahatty, Co. Down (Hartwell 1998); these incorporate some features that closely resemble those evident at Newgrange albeit on a far smaller scale. The large, double-circuit four-post timber enclosure of Ballynahatty BHN6 is mirrored by the similar, although larger structure ME019-067002 at Newgrange. At Ballynahatty, this lies off-centre within the double oval timber palisade of BHN5, in the same manner that ME019-067002 lies off-centre within the likely circuit of the Newgrange palisades. The projected triple-palisaded enclosure, while incorporating Newgrange and ME019-067002 apparently intersects both the henge at Site A and the Newgrange cursus. It is possible that the point of intersection with Site A is responsible for the scarping of this enclosure noted to the north-west by Davis *et al.* (2013).

While Hale *et al.* (2009, 286) highlight that in many cases palisaded enclosures are overlooked by large Neolithic mounds, in this case it would seem possible that the triple palisade extends to actually enclose the

mound of Newgrange in addition to a substantial area around the tomb. Elsewhere within Brú na Bóinne the enclosure of passage tombs is a common motif but the palisade here would enclose not just a single tomb but an entire precinct, potentially delimiting an enormous ceremonial space between Newgrange and the river. This idea is possibly echoed in the enclosing ramparts described by Bergh (2000) at Knocknarea, Co. Sligo, where the entire plateau appears to have been enclosed by earth and stone banks. Similar large precincts appear to have been defined at some Irish ‘Royal’ sites, in particular at Rathcroghan, Co. Roscommon (Waddell *et al.* 2009) and Uisneach, Co. Westmeath (Schot 2011), again unexcavated and undated, but associated with probable later prehistoric landscapes.

TIMBER ARCHITECTURE IN BRÚ NA BÓINNE: LINEAR POST ALIGNMENTS

At least four linear post alignments have now been recorded in the wider area, including one each at Dowth and Oldbride to the south side of the river and two examples at Newgrange (Fig. 16). While published in a preliminary form (Smyth 2009, 22), no high-quality image of the geomagnetic survey from the Newgrange Pit Circle/cursus area is currently available for analysis. The pit circle itself is not clearly visible in the available geomagnetic data; however, a double pit or post-alignment is evident running in a north-west to south-east direction and terminating to the south-east in a perpendicular double pit or post row. At the north-west end of the post alignment are two short parallel pit or post-rows, potentially with some indications of burning. Part of a possible fifth post alignment was partially excavated by O’Kelly south-west of Newgrange (O’Kelly *et al.* 1983), although the location of this at the western limit of his excavation area and the lack of dating evidence hampers detailed interpretation.

The Oldbride alignment occupies an elevated position on the south side of the Boyne. It comprises two parallel rows of regularly spaced pits or post-holes which extend for *c.* 40 m in a north-west to south-east direction. The central pits/post-holes are enclosed within a weakly magnetic rectilinear feature. This alignment has clear similarities with those identified at Newgrange and Dowth. It may also be analogous with an undated structure excavated at Ballingowan, Co. Kerry (Moloney 2013; Long *et al.* 2020, 39–42,

95–7) and bears a striking similarity to the undated Scottish free-standing timber avenues reviewed by Millican (2016, 41–3).

The most remarkable of these linear structures was discovered through geophysical survey in 2015, extending for almost 200 m east–west on a low ridge beneath the main shale outcrop on which Newgrange stands (Leigh *et al.* 2018; Fig. 16). Briefly, the structure comprises two parallel rows of regularly spaced pits or post-holes, larger ones to the outside (5–7 m apart), smaller to the interior (4.5–5 m apart), enclosed within a regular double rectilinear enclosure. A narrow entrance feature, *c.* 3 m across is located to the east. A second probable post-built linear feature runs north–south, perpendicular to the long axis of the structure and perhaps controlling access to the entrance. Recent test excavations yielded a preliminary date of 2829–2468 cal BC from oak charcoal (heartwood) recovered from the basal fill of the outer ditch (UBA-38707; 4034±33 BP; Leigh *et al.* 2019; recalibrated using IntCal20; Stuiver *et al.* 2020); two further radiocarbon dates on animal bone were attempted but failed owing to poor collagen preservation (Matthew Stout pers. comm.). Given the nature of the material available for selection this date should obviously be treated with a degree of caution. Although this monument has been described as a ‘hybrid cursus’ (Leigh *et al.* 2019), the late Neolithic date and internal partitioning make it unlike other cursus monuments. While cursus monuments in Ireland are very much under-researched (Corlett 2014; Kenny 2014) and unexcavated, none of those so far identified has evidence for internal pits, double ditches, or a façade.

These post alignments most likely represent ceremonial avenues: both the Dowth example and that associated with the Newgrange Pit Circle are closely associated with both passage tombs (Site Z; the recently discovered tombs at Dowth Hall) and henge monuments (eg, Dowth Henge) or henge-like structures (the Newgrange Pit Circle). Post alignments are recorded within a number of significant late Neolithic landscapes in Britain and Ireland; however, in some ways they mirror discussion of henge monuments in that the one thing that is agreed upon is that they are ‘extremely heterogeneous’ (Waddington 1997, 22) and are associated with ‘a range of features of varying date’ (*ibid.*, 24). The earliest dated examples, like the Newgrange site, date from the late Neolithic and appear to be associated with Grooved

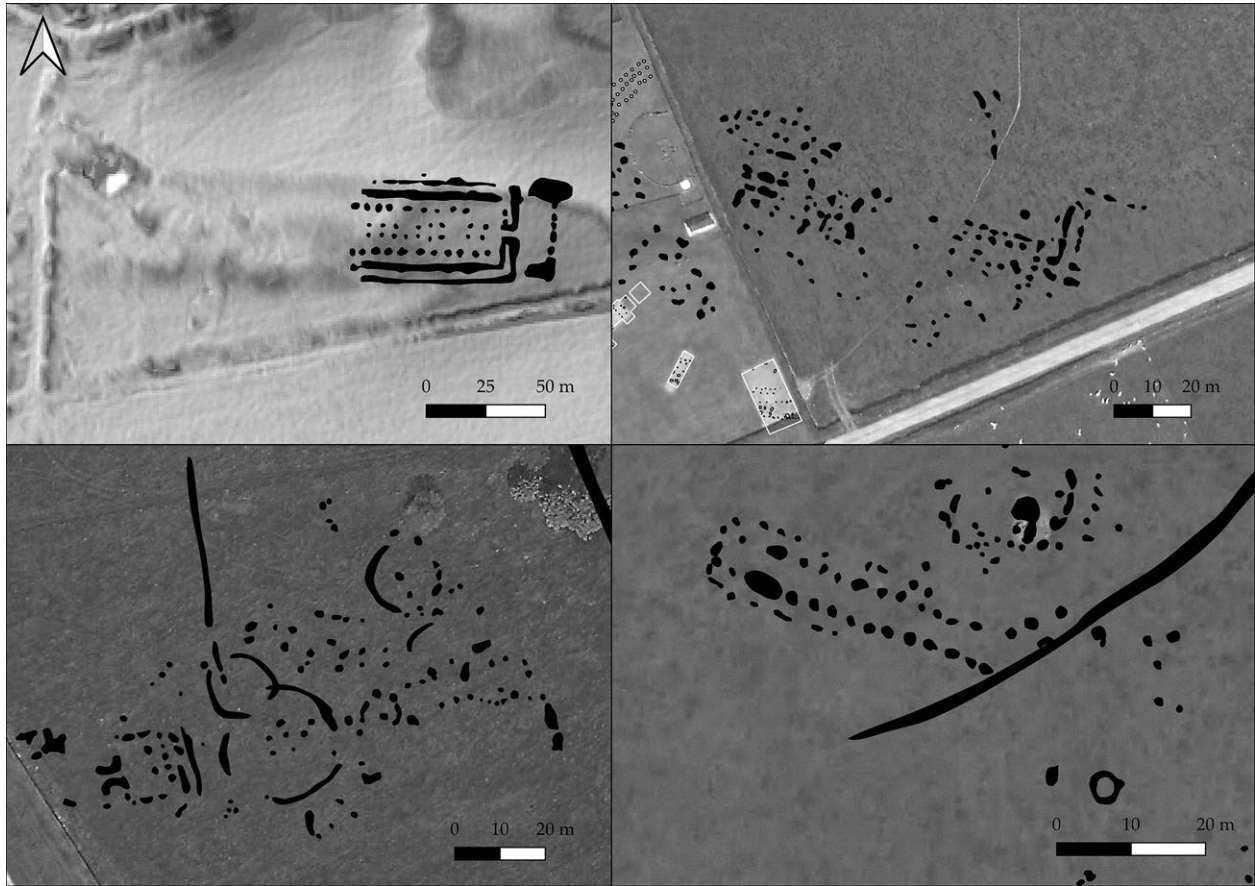


Fig. 16.

Linear post alignments, Brú na Bóinne: *clockwise from top left*: ME019-129 ('Great Rectangular Palisade') (transcribed resistivity data after Leigh *et al.* 2018, LiDAR data with Local Relief Model. Projected features in grey); Newgrange Pit Circle (transcribed geomagnetic survey after Smyth 2009); Oldbridge pit/post alignment OLD12 (transcribed geomagnetic survey); Dowth pit/post alignment DOW19 (transcribed geomagnetic survey)

Ware activity (*ibid.*, 29–30; Harding 2013, 136–7), although similar monuments seem to have been constructed well into the Bronze Age (Millican 2016, 41–2).

Two of the linear monuments described (Newgrange Pit Circle and Great Rectangular Palisade) also possess what could be termed 'double linear' entrances, comprising two linear ditch/palisade sections perpendicular to the direction of the alignment, each with a narrow, well-defined entrance. Two other similar features have been identified within the Brú na Bóinne geomagnetic surveys, one of which (DOW62) is associated with the four-post structure DOW61 (Fig. 17). It seems likely that these entrance features are formalising the approach

to certain structures, perhaps controlling access to important sites.

LATE NEOLITHIC ARCHITECTURE IN BRÚ NA BÓINNE: A COMMONALITY OF MOTIFS

As has been strongly argued elsewhere (Carlin 2017, 176–81) there are significant architectural commonalities between later Neolithic enclosures and the passage tombs that preceded them. In the case of ME026-033, Newgrange itself offers an obvious parallel: both have axial symmetry and significant aggrandisement to the front and the rear, with the elaborate entrance stone and the highly decorated opposing Kerbstone 52 at Newgrange mirrored by

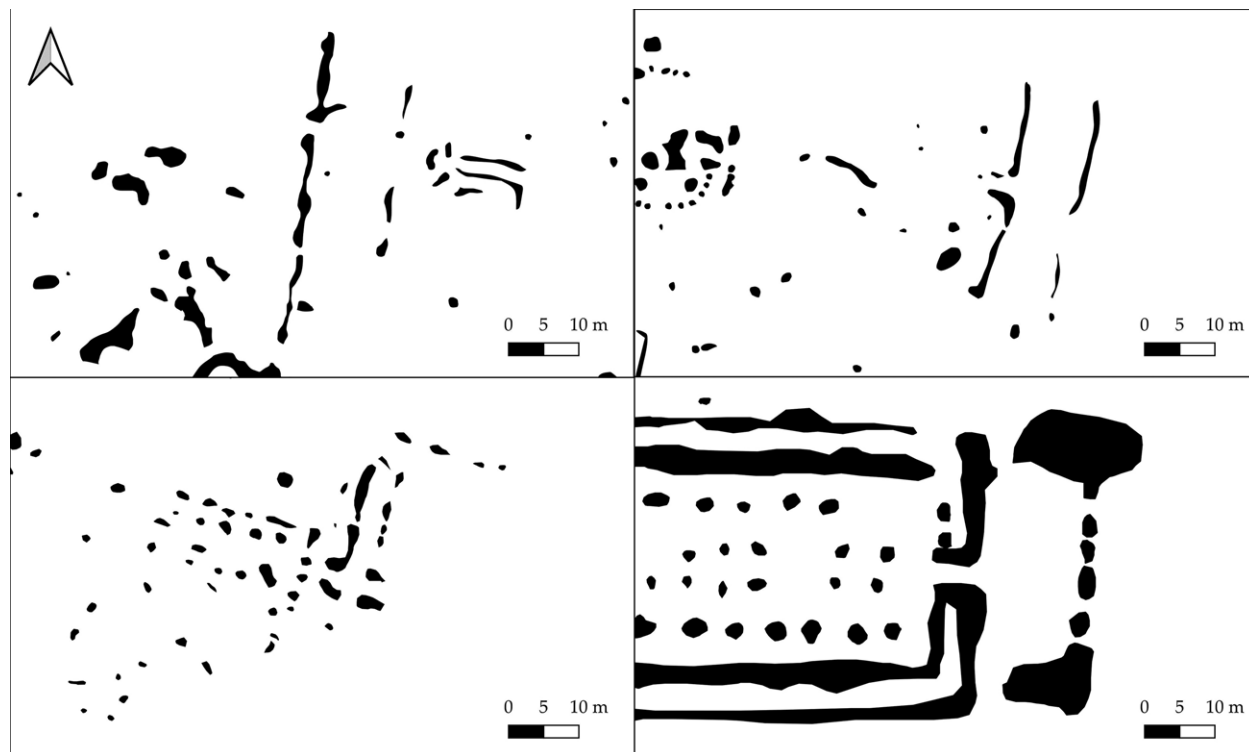


Fig. 17.

Double linear entrance features: *clockwise from top left*: NG51; DOW62 (transcribed from geomagnetic survey); ME019-129 ('Great Rectangular Palisade': redrawn after Leigh *et al.* 2018); Newgrange Pit Circle (transcribed from geophysical survey in Smyth 2009)

the annex and rectangular structure at ME026-033. Moreover, the idea of discontinuous boundaries, such as is evident at both ME019-094 and ME026-033, is most clearly demonstrated in the orthostatic passage tomb kerbs themselves and, at Newgrange, by the Great Stone Circle, although this is considered to be later in date than the pit circle (Sweetman *et al.* 1985, 208–9; Carlin 2017, 178). This stresses the idea that these sites are, at least in part, re-imaginings of stone structures in timber and earth.

Newgrange site NG16 also incorporates many of the same architectural motifs seen at Newgrange passage tomb. Here, the enclosing ditch mirrors a stone kerb, while centrally a timber 'passage', aligned on the winter solstice sunrise has clear parallels in the orthostatic passage of Newgrange. The circular post settings within the enclosure provide the concentricity or 'wrapping' evident in the design of Irish passage graves (Robin 2010; Richards & Cummings 2017). Darvill (2010, 4) describes the barrow at North Mains (Barclay 1983) as 'essentially a timber passage

grave': this seems a very appropriate description for some elements of the Newgrange structure, although chronology clearly remains a major issue and one that is only really possible to address through excavation.

Spatially, the Boyne four-post structures appear to be more within the domain of passage tombs than henge monuments: the recorded examples to date do not extend to the lowest floodplain terraces where most of the henges are located but are instead located in elevated areas, visible from the river. Questions of the domestic or ritual nature of these sites have been extensively discussed (eg, Sheridan 2004, 29; Smyth 2011, 22–3; Noble *et al.* 2012, 151–8; Brophy 2016). Increasingly these are interpreted as 'monumentalised versions of people's homes' (Carlin & Cooney 2017, 46), although the idea of a straightforward division between ceremonial and domestic life and architecture in the late Neolithic is generally recognised to be a gross oversimplification (eg, Noble *et al.* 2012, 167; Thomas 2015, 154; Carlin & Cooney 2017, 41–6).

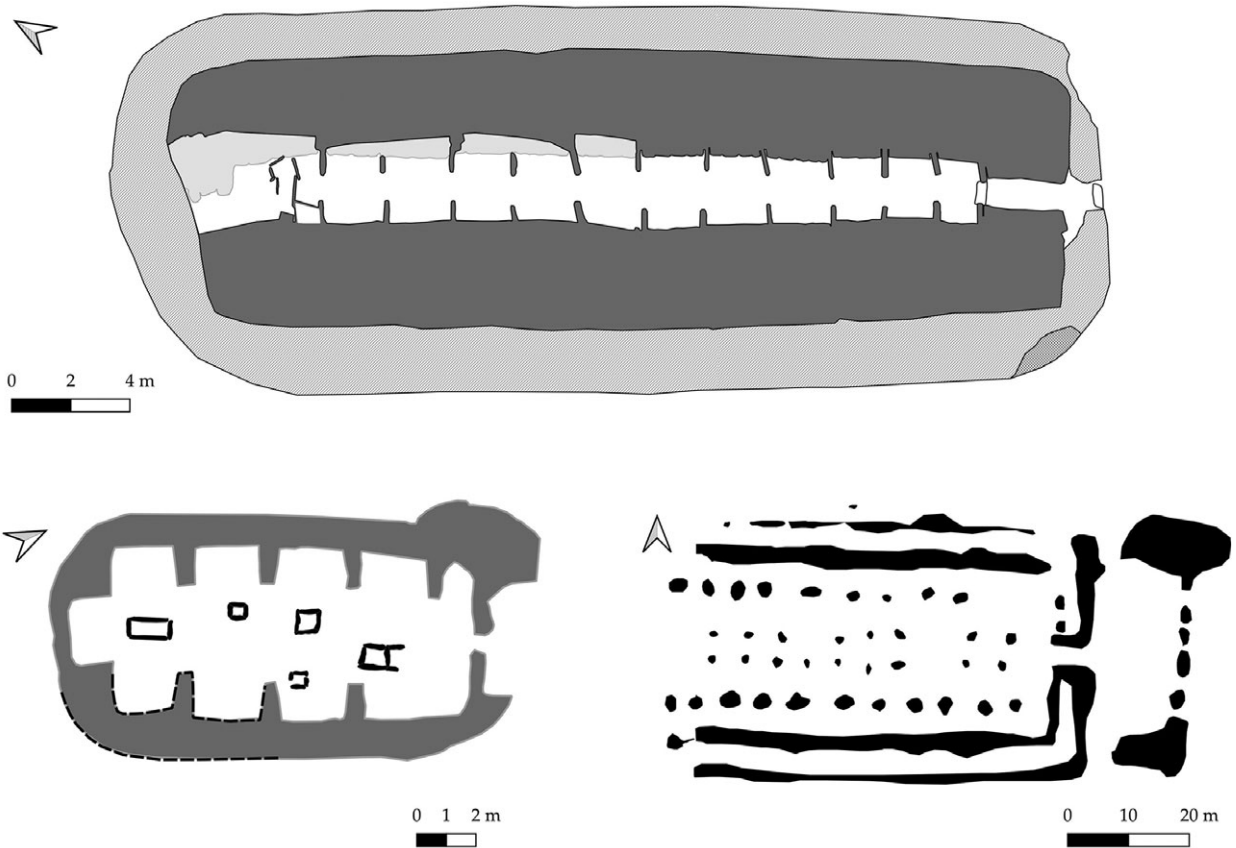


Fig. 18.

Rectangular architecture in Orkney and Brú na Bóinne: *top*: Midhowe plan (redrawn from Callander & Grant 1934); Ness of Brodgar Structure 8 (redrawn from Towers *et al.* 2017); Newgrange ME019-129 (‘Great Rectangular Palisade’)

The post alignments, especially ME019-129, while superficially cursus-like and perhaps having a similar ceremonial function, have their clearest parallels in rectangular building architecture although the scale of these structures at Brú na Bóinne probably precludes the possibility of them ever having been roofed. These similarities are at their most apparent in extended ‘piered’ structures within Orkney (eg, Structure 8 at the Ness of Brodgar) and in Orcadian stalled cairns (eg, Callandar & Grant 1934; Fig. 18), representing in elongated form the same parallels often drawn between Skara Brae type house architecture and four-post structures (Bradley 2007, 118–26; 2013). Parallels can be drawn between this design and the late 3rd millennium timber structures excavated at Balfarg, Fife, interpreted by Barclay and Russell-White (1993, 180) as ‘part of the continuum

... from the relatively small long mortuary enclosures to the great cursus monuments’, as well as with some early Neolithic long houses, especially from Scotland (eg, Crathes; Murray *et al.* 2009; or Lockerbie Academy; Kirby 2011) although these were constructed almost 1000 years earlier.

This continuum between cursus monuments, long mounds, long houses, and ‘mortuary enclosures’ has been discussed in detail elsewhere (Bradley 1983; Loveday 1985; 2006; Thomas 1999, 51–2; 2006; Millican 2016, 38–40). In the same way that Clare (1987, 462) draws parallels between early Neolithic timber mortuary structures beneath long barrows and timber settings associated with late Neolithic henge monuments, it is likely that these late Neolithic monuments represent ‘a conscious evocation’ of earlier monumental forms (Thomas 1999, 52).

CONCLUSIONS

This paper demonstrates not only the remarkable diversity but also the equally remarkable commonality of some of the motifs related to the probable late Neolithic monument complex within Brú na Bóinne. While many of the architectural themes are conserved between the middle–late Neolithic (as recently discussed by Carlin 2017) there is, as has been discussed elsewhere, a move towards timber and earthen construction rather than building in stone. In the majority of the Boyne enclosures, the control of visual aspects of the landscape seems to be of limited importance: while these enclosures may be delimiting areas of ceremonial activity from areas where such activity did not take place, visually it seems likely that the interior of many of these sites remained connected to the rest of the landscape, the act of enclosure in itself being the primary consideration (Younger 2015, 139–42). As regards what was actually being enclosed, in several sites the focus of enclosure would appear to be probable megalithic tombs (eg, Site A; ME019-103; ME019-058002; Dowth Henge); this mirrors the situation at Balregan (Ó Donnchadha & Grogan 2010), where appreciable quantities of middle Neolithic pottery were recovered in association with the henge ditch: the location of these later Neolithic enclosures is likely to have already been significant prior to their construction.

In the four-post structures some typical passage tomb motifs are very much apparent. At NG16 this not only includes some clear passage tomb cosmology (eg, axial symmetry; concentricity; winter solstice alignment) but is potentially treated in a similar fashion by being ‘henced’, similar to the sequence outlined at Coneybury by Pollard (2012, 102–3), and potentially ‘lithicised’ as at the Knowth timber circle, Machrie Moor, and arguably Newgrange itself. This treatment echoes the recent views of Carlin (2017), who stresses the degree of continuity in place and practice evident between the period of passage tomb construction, late Neolithic monumentality, and subsequent Beaker activity. While the smaller four-post structures can be compared to the Scottish monuments reviewed by Noble *et al.* (2012), NG16 finds its closest comparisons in southern England (eg, Stanton Drew SSW), perhaps arguing for closer contact between Brú na Bóinne and southern England in the late Neolithic. Similarly, wider regional contacts may in part explain the form of the linear

post-built structures: while it is likely that these functioned as ceremonial avenues, they are not cursus monuments in any conventional sense, but have echoes of long mound/long house architecture, insular in design but perhaps reflecting continued contact with Orkney and Mainland Scotland.

As an overall complex, the scale and diversity of the Boyne monuments invites few parallels and appears to represent a mix of broader regional ideas (eg, possible connections to Orkney, mainland Scotland and southern England) mingled with some insular developments in style. Despite this remarkable diversification, the late Neolithic monumentality of Brú na Bóinne remains firmly rooted in its megalithic past. Passage tombs are enclosed by henge monuments; post alignments, also aligned on megaliths, echo both earlier cursus monuments and rectangular building architecture; four-post structures reflect a range of architectural motifs familiar from the developed passage tombs of the area. While the Brú na Bóinne passage tomb cemetery clearly represents a period of intense landscape-scale activity in the centuries prior to *c.* 3000 BC, the activity seen in the post-passage tomb period is hardly less intensive or extensive; however, the changing construction materials (timber and earth) of these post-passage tomb monuments are such that many have only become visible owing to recent survey campaigns.

Clearly there are some obvious and very significant gaps in our knowledge so far as the late Neolithic complex in Brú na Bóinne is concerned, in particular as regards both the chronology and function of these sites. Several key research gaps highlighted within Smyth’s (2009) *World Heritage Site Research Framework* are as valid now as they were over a decade ago. Further excavation is sorely needed and it is clear that this review represents only a part of a continuing conversation on the late Neolithic and early Bronze Age monumentality of Brú na Bóinne and its wider regional connectivity.

Notes

¹ These numbers take the form of a two-letter county abbreviation (eg, ME for Meath), a two-digit code signifying on which 6-inch map sheet the site is to be found, and a unique site code. The SMR is distinct from the Record of Monuments and Places (RMP) in that the RMP refers to sites afforded statutory protection under Section 12 of the *National Monuments (Amendment) Act 1994* while sites recorded in the SMR, including most newly described sites, do not automatically have legal protection conferred upon them.

² The lack of a clear bank at Llandegai B was noted by Houlder (1968); despite considerable effort no clear bank remnant was found by Lynch and Musson (2004). More recently Kenney (2008, 8) posits an external bank for Llandegai B, presumably owing to its dual opposing entrances (Harding & Lee 1987, 41).

Acknowledgements: The authors would like to thank a number of colleagues for helpful discussion, comment, and suggestion, especially Richard Bradley and Alison Sheridan, as well as Muiris O’Sullivan, Geraldine Stout, Neil Carlin, Joanna Brück, and Susan Greaney who provided helpful comments on earlier drafts of this article. We would also like to thank BlueSky International and Meath County Council for the use of aerial and LiDAR data, Ken Williams and Anthony Murphy for allowing the use of their remarkable images, and the landowners of Brú na Bóinne, especially Austin Downey, Pascal and Kevin Hand, Brigid Salmanovic, and Alice and Owen Brennan, for allowing our continued survey campaigns. Early surveys at Sites LP1 and LP2 were funded by the Heritage Council and at Dowth Henge by the Office of Public Works. Thanks are due to Christine Markussen, Chris Carey, Susan Curran, Kevin Barton, and Joanna Leigh for assistance with early geophysical surveys and Conor McDermott for help with figures. The authors are also extremely grateful for the valuable and constructive comments provided by two anonymous referees.

BIBLIOGRAPHY

- Barclay, G. 1983. Sites of the third millennium BC to the first millennium AD at North Mains, Strathallan, Perthshire. *Proceedings of the Society of Antiquaries of Scotland* 113, 122–281
- Barclay, G. & Russell-White, C. 1993. Excavations in the ceremonial complex of the fourth to second millennium bc at Balfarg/Balbirnie, Glenrothes, Fife. *Proceedings of the Society of Antiquaries of Scotland* 123, 43–210
- Bendrey, R., Thorpe, N., Outram, A. & Wijngaarden-Bakker, L.H. van. 2013. The origins of domestic horses in north-west Europe: New direct dates on the horses of Newgrange, Ireland. *Proceedings of the Prehistoric Society* 79, 91–103
- Bergh, S. 2000. Transforming Knocknarea: The archaeology of a mountain. *Archaeology Ireland* 14, 14–18
- Bradley, R.J. 1983. The bank barrows and related monuments of Dorset in the light of recent fieldwork. *Proceedings of the Dorset Natural History & Archaeological Society* 105, 15–20
- Bradley, R.J. 2007. *The Prehistory of Britain and Ireland*. Cambridge: Cambridge University Press
- Bradley R.J. 2013. Houses of Commons, Houses of Lords: Domestic dwellings and monumental architecture in pre-historic Europe. *Proceedings of the Prehistoric Society* 79, 1–17
- Brophy, K. 2016. On ancient farms: A survey of Neolithic potentially domestic locations in lowland Scotland. In K. Brophy, G. MacGregor & I. Ralson (eds), *The Neolithic of Mainland Scotland*, 200–35. Edinburgh: Edinburgh University Press
- Brophy, K. & Noble, G. 2012. Henging, mounding and blocking: The Forteviot henge group. In Gibson (ed.) 2012b, 21–36
- Burrow, S. 2010. The formative henge: speculations drawn from the circular traditions of Wales and adjacent counties. In J. Leary, T. Darvill & D. Field (eds), *Round Mounds and Monumentality in the British Neolithic and Beyond*, 182–196. Oxford: Neolithic Studies Group Seminar Papers 10
- Callandar, J.G. & Grant, W.G. 1934. A long stalled chambered cairn or mausoleum (Rousay Type) near Midhowe, Rousay, Orkney. *Proceedings of the Society of Antiquaries of Scotland* 68, 320–50
- Carlin, N. 2017. Getting into the groove: Exploring the relationship between Grooved Ware and developed passage tombs in Ireland c. 3000–2700 cal BC. *Proceedings of the Prehistoric Society* 83, 155–88
- Carlin, N. & Cooney, G. 2017. Transforming our understanding of Neolithic and Chalcolithic society (4000–2200 cal BC) in Ireland. In M. Stanley, R. Swan & A. O’Sullivan (eds), *Stories of Ireland’s Past: Knowledge gained from NRA roads archaeology*, 23–56. Dublin: Transport Infrastructure Ireland
- Carson, R. & O’Kelly, C. 1977. A catalogue of the Roman coins from Newgrange, Co. Meath. *Proceedings of the Royal Irish Academy Section C* 77, 35–55
- Clare, T. 1987. Towards a reappraisal of henge monuments: Origins, evolution and hierarchies. *Proceedings of the Prehistoric Society* 53, 457–77
- Coffey, G. 1912. *New Grange and Other Incised Tumuli in Ireland*. Dublin: Hodges & Figgis
- Collins, A.E.P. 1957. Excavations at the Giant’s Ring, Ballynahatty. *Ulster Journal of Archaeology* 20, 44–50
- Condit, T. & Keegan, M., 2018. *Aerial investigation and mapping of the Newgrange landscape, Brú na Bóinne, Co. Meath. Interim Report, December 2018*. Available online at: <https://www.archaeology.ie/sites/default/files/files/bru-na-boinne-interim-report.pdf> [accessed 21/7/2020]
- Condit, T. & Simpson, D., 1998. Irish hengiform enclosures and related monuments: a review. In Gibson & Simpson (eds) 1998, 45–61
- Corlett, C. 2014. Some cursus monuments in South Leinster. *Archaeology Ireland* 28, 20–5
- Cooney, G. 2000. *Landscapes of Neolithic Ireland*. London: Routledge
- Danaher, E. 2005. Tonafortes: A ceremonial enclosure in County Sligo. *Archaeology Ireland* 19, 12–15
- Danaher, E. 2007. The archaeology of Tonafortes. In E. Danaher, *Monumental Beginnings: The archaeology of the N4 Sligo Inner Relief Road*, 43–60. Dublin: National Roads Authority
- Darvill, T. 2006. *Stonehenge: The biography of a landscape*. Stroud: History Press
- Darvill, T. 2010. Megaliths, monuments, and materiality. *Journal of Neolithic Archaeology* 10, 1–15

- Darvill, T. & Wainwright, G.J. 2003. Stone circles, oval settings and henges in south-west Wales and beyond. *Antiquaries Journal* 83, 9–45
- Darvill, T., Marshall, P., Parker-Pearson, M. & Wainwright, G. 2012. Stonehenge remodelled. *Antiquity* 86, 1021–40
- David, A., Cole, M., Horsley, T., Linford, N., Linford, P. & Martin, L. 2004. A rival to Stonehenge? Geophysical survey at Stanton Drew, England. *Antiquity* 78, 341–58
- Davis, S.R., 2013. New geophysical surveys at Dowth Henge, Brú na Bóinne. *PAST* 75, 1–3
- Davis, S.R., 2017. Environmental evidence from Knowth and its landscape setting. In Eogan & Cleary (eds) 2017, 569–649
- Davis, S.R. 2018. Secrets from the snow. *Archaeology Ireland* 32, 24–5
- Davis, S.R., Brady, C., Megarry, W. & Barton, K., 2013. LiDAR survey in the Brú na Bóinne World Heritage Site. In D. Cowley & R. Opitz (eds), *Interpreting Archaeological Topography: Lasers, 3D data, observation, visualisation and applications*, 225–39. Oxford: Oxbow Books
- Davis, S.R., Megarry, W., Brady, C., Lewis, H., Cummins, T., Guinan, L., Turner, J., Gallagher, C., Brown, A.G. & Meehan, R. 2010. *Boyne Valley Landscapes Project Phase III Final Report 2010*. Unpublished report to the Heritage Council. Irish National Strategic Archaeological Research (INSTAR) Programme, Grant No. AR01047
- Downes, J., Richards, C., Brown, J., Cresswell, A.J., Ellen, R., Davis, A.D., Hall, A., McCulloch, R., Sanderson, D.C.W. & Simpson, I.A. 2013. Investigating the great Ring of Brodgar. In C. Richards (ed.), *Building the Great Stone Circles of the North*, 90–118. Oxford: Windgather Press
- Ellison, A. 1990. The prehistoric pottery. In Richards 1990, 144
- Eogan, G. 1968. Excavations at Knowth, Co. Meath, 1962–65, with historical note by F. J. Byrne. *Proceedings of the Royal Irish Academy Section C* 67, 299–400
- Eogan, G. 1974. Report on the excavations of some passage graves, unprotected inhumation burials and a settlement site at Knowth, Co. Meath. *Proceedings of the Royal Irish Academy Section C* 74, 11–112
- Eogan, G., 1986. *Knowth and the Passage-tombs of Ireland*. London: Thames & Hudson
- Eogan, G. 2012. *Excavations at Knowth Volume 5: The archaeology of Knowth in the first and second millennia AD*. Dublin: Royal Irish Academy.
- Eogan, G. & Cleary, K. (eds). 2017. *Excavations at Knowth. Volume 6: The passage tomb archaeology of the Great Mound at Knowth*. Dublin: Royal Irish Academy
- Eogan, G. & Doyle, P. 2010. *Guide to the Passage Tombs at Brú na Bóinne*. Dublin: Wordwell
- Eogan, G. & Roche, H. 1994. A Grooved Ware wooden structure at Knowth, Boyne Valley, Ireland. *Antiquity* 68, 322–30
- Eogan, G. & Roche, H. 1997. *Excavations at Knowth Volume 2*. Dublin: Royal Irish Academy
- Eogan, G. & Roche, H. 1999. Grooved Ware from Brugh na Boinne and its wider context. In R. Cleal & A. MacSween (eds), *Grooved Ware in Britain and Ireland*, 91–111. Oxford: Neolithic Studies Group Seminar Papers 3
- Gaffney, V., Neubauer, W., Garwood, P., Gaffney, C., Löcker, K., Bates, R., Smedt, P.D., Baldwin, E., Chapman, H., Hinterleitner, A., Wallner, M., Nau, E., Filzwieser, R., Kainz, J., Trausmuth, T., Schneidhofer, P., Zotti, G., Lugmayer, A., Trinks, I. & Corkum, A. 2018. Durrington walls and the Stonehenge Hidden Landscape Project 2010–2016. *Archaeological Prospection* 25, 255–69
- Gibson, A.M. 1998a. Hindwell and the Neolithic palisaded sites of Britain and Ireland. In Gibson & Simpson (eds) 1998, 68–79
- Gibson, A.M. 1998b. *Stonehenge & Timber Circles*. Stroud: Tempus
- Gibson, A.M. 1999. *The Walton Basin Project: Excavation and survey in a prehistoric landscape 1993–7*. York: Council for British Archaeology Research Report 118
- Gibson, A.M. 2004. Round in circles. Timber circles, henges and stone circles: some possible relationships and transformations. In R. Cleal & J. Pollard (eds), *Monuments and Material Culture, Papers in Honour of an Avebury Archaeologist: Isobel Smith*, 70–82. Salisbury: Hobnob Press
- Gibson, A.M. 2010. Excavation and survey at Dyffryn Lane Henge Complex, Powys, and a reconsideration of the dating of henges. *Proceedings of the Prehistoric Society* 76, 213–48
- Gibson, A.M. 2012a. An introduction to the study of henges: Time for a change? In Gibson (ed.) 2012b, 1–20
- Gibson, A. (ed.) 2012b. *Enclosing the Neolithic: Recent studies in Britain and Europe*. Oxford: British Archaeological Report S2440
- Gibson, A. & Simpson, D. (eds) 1998. *Prehistoric Ritual and Religion. Essays in Honour of Aubrey Burl*. Stroud: Sutton
- Greaney, S., Hazell, Z., Barclay, A., Ramsey, C. B., Dunbar, E., Hajdas, I., Reimer, P., Pollard, J., Sharples, N. & Marshall, P. 2020. Tempo of a megahenge: A new chronology for Mount Pleasant, Dorchester, Dorset. *Proceedings of the Prehistoric Society* 86, 199–236
- Grogan, E. & Roche, H. 2002. Irish palisaded enclosures – a long story. In A. Gibson (ed.), *Behind Wooden Walls: Neolithic palisaded enclosures in Europe*, 24–27. Oxford: British Archaeological Report S1013
- Haggarty, A.M. 1991. Machrie Moor, Arran: Recent excavations at two stone circles. *Proceedings of the Society of Antiquaries of Scotland* 121, 51–94
- Hale, D., Platell, A. & Millard, A. 2009. A Late Neolithic palisaded enclosure at Marne Barracks, Catterick, North Yorkshire. *Proceedings of the Prehistoric Society* 75, 265–304
- Harding, A.F. 1981. Excavations in the prehistoric ritual complex near Milfield, Northumberland. *Proceedings of the Prehistoric Society* 47, 87–135
- Harding, A.F. & Lee, G.E. 1987. *Henge Monuments and Related Sites of Great Britain: Air photographic evidence and catalogue*. Oxford: British Archaeological Report 175

- Harding, J. 2003. *Henge Monuments of the British Isles*. Stroud: Tempus.
- Harding, J. 2013. *Cult, Religion, and Pilgrimage: Archaeological investigations at the Neolithic and Bronze Age monument complex of Thornborough, North Yorkshire*. York: Council for British Archaeology Research Report 174
- Hartwell, B. 1991. Ballynahatty: A prehistoric ceremonial centre. *Archaeology Ireland* 5, 12–15
- Hartwell, B. 1998. The Ballynahatty complex. In Gibson & Simpson (eds) 1998, 32–44
- Hartwell, B. 2002. A Neolithic ceremonial timber complex at Ballynahatty, Co. Down. *Antiquity* 76, 526–32
- Healy, F. 1997. Site 3. Flagstones. In R.J. Smith, F. Healy, M.J. Allen, E.L. Morris, I. Barnes & P.J. Woodward. *Excavations along the Route of the Dorchester Bypass, Dorset 1986–8*, 27–47. Salisbury: Wessex Archaeology Report 11
- Herity, M. 1975. *Irish Passage Graves: Neolithic tomb-builders in Ireland and Britain, 2500 B.C.* Dublin: Irish University Press
- Houlder, C. 1968. The henge monuments of Llandegai. *Antiquity* 42, 216–21
- Hurl D. & McSparron, C. 2004. Excavations at the Dorsey, Co. Armagh. *Ulster Journal of Archaeology* 63, 41–51
- Kenney, J. 2008. *Recent Excavations at Llandygai, near Bangor, North Wales*. Available online at http://orapweb.rcahms.gov.uk/coflein//P/PBC_01_01.pdf [Accessed 1/12/2020]
- Kenny, I. 2014. Another cursus comes to light. *Archaeology Ireland* 28, 21–5
- Kirby, M. 2011. *Lockerbie Academy: Neolithic and Early Historic timber halls, a Bronze Age cemetery, an undated enclosure and a post-Medieval corn-drying kiln in south-west Scotland*. Edinburgh: Scottish Archaeological Internet Report 46. <http://journals.socantscot.org/index.php/sair/article/download/3007/2986/> [Accessed 20/7/2020]
- Leigh, J., Stout, G. & Stout, M. 2018. A pathway to the cosmos at Newgrange Farm. *Archaeology Ireland* 32, 25–9
- Leigh, J., Stout, G. & Stout, M. 2019. Report on the Research Excavation at Newgrange Farm 2018. *Riocht na Midhe* 30, 15–51
- Lelong, O. & Pollard, T. 1998. The excavation and survey of prehistoric enclosures at Blackhouse Burn, Lanarkshire. *Proceedings of the Society of Antiquaries of Scotland* 128, 13–53
- Lewis, H., Gallagher, C., Davis, S.R., Turner, J., Foster, G., Brown, A.G., Breda, W. van, Mulrooney, G., Guinan, L., Brady, C. & Meehan, R. 2017. Developing a model of landscape evolution and land-use history of the River Boyne. In Eogan & Cleary (eds) 2017, 570–9
- Linford, N.T., Linford, P.K. & Payne, A.W. 2018. *Stanton Drew Stone Circles and Avenues, Bath and North East Somerset. Report on Geophysical Survey, July 2017*. York: Archaeology Data Service
- Linford, N.T., Linford, P.K. & Payne, A.W. 2019. *Mount Pleasant, West Stafford, Dorset: Report on Geophysical Survey, March and August 2019*. London: Historic England Research Report Series 92/2019
- Long, P., O’Keeffe, P. & Bennett, I. 202. *In the Vale of Tralee. The Archaeology of the N22 Bypass. TII Heritage* 9. Dublin: Transport Infrastructure Ireland.
- Loveday, R. 1985. *Cursuses and Related Monuments of the British Neolithic*. Unpublished PhD thesis, University of Leicester
- Loveday, R. 2006. *Inscribed Across the Landscape: The cursus enigma*. Stroud: Tempus
- Lynch, F. & Musson, C. 2004. A prehistoric and early medieval complex at Llandegai, near Bangor, north Wales. *Archaeologia Cambrensis* 150, 17–142
- Lynn, C.J. 1977. Excavations at the Dorsey, County Armagh, 1977. *Ulster Journal of Archaeology* 54/55, 61–77
- Megarry, W. & Davis, S.R., 2013. Beyond the bend: Remotely sensed data and archaeological site prospection in the Boyne Valley, Ireland. In D.C. Comer & M.J. Harrower (eds), *Mapping Archaeological Landscapes from Space*, 85–95. New York: Springer
- Millican, K. 2016. *The Timber Monuments of Neolithic Scotland*. Oxford: British Archaeological Report 623
- Moloney, C. 2013. Avenue to the heavens? *Seanda* 8, 10–13
- Murphy, A. 2019. *Dronehenge: The story behind the remarkable discovery at Newgrange*. Dublin: Liffey Press
- Murray, H.K., Murray, J.C. & Fraser, C. 2009. *A Tale of the Unknown Unknowns: A Mesolithic pit alignment and a Neolithic timber hall at Warren Field, Crathes*. Oxford: Oxbow Books
- Noble, G. & Brophy, K. 2011. Big enclosures: The later Neolithic palisaded enclosures of Scotland and their northwestern European context. *European Journal of Archaeology* 14, 60–87
- Noble, G., Greig, M., Millican, K., Anderson, S., Clarke, A., Johnson, M., McLaren, D. & Sheridan, A. 2012. Excavations at a multi-period site at Greenbogs, Aberdeenshire, Scotland and the four-post timber architecture tradition of Late Neolithic Britain and Ireland. *Proceedings of the Prehistoric Society* 78, 135–71
- Ó Donnchadha, B. & Grogan, E. 2010. *Site 116: Balregan 1 and 2 chainage: CH. 22.470 – 22.600 NGR: 302674/309977: Final report on behalf of Louth County Council and the National Roads Authority*. Dudalk: Louth County Council, unpublished report
- Ó Drisceoil, C. 2009. Archaeological excavations of a Late Neolithic Grooved Ware site at Balgatheran, County Louth. *Journal of the County Louth Archaeological & Historical Society* 27, 77–102
- O’Kelly, C. 1978. *Illustrated Guide to Newgrange and the Other Boyne Monuments*. Cork: Blackrock
- O’Kelly, M.J., Cleary, R.M., Lehane, D. & O’Kelly, C. 1983. *Newgrange, Co. Meath, Ireland: The late Neolithic/Beaker period settlement*. Oxford: British Archaeological Report S190
- O’Kelly, M.J., Lynch, F., O’Kelly, C., Twohig, D., Erskine, C.A., McCormick, F. & Roche, G. 1978. Three

- Passage-Graves at Newgrange, Co. Meath. *Proceedings of the Royal Irish Academy Section C* 78, 249–352
- O'Sullivan, M. 2006. The Boyne and beyond: A review of megalithic art in Ireland. In R. Joussaume, L. Laporte & C. Scarre (eds), *Origine et développement du mégalithisme de l'ouest de l'Europe. Actes du colloque international, 26–30 Octobre 2002, Bougon (France)*, 649–86. Niort: Conseil Général des Deux-Sèvres
- O'Sullivan, M., Davis, S.R. & Stout, G. 2012. Henges in Ireland: New discoveries and emerging issues. In Gibson (ed.) 2012b, 37–54
- Oswald, A., Dyer, C. & Barber, M., 2001. *The Creation of Monuments: Neolithic causewayed enclosures in the British Isles*. Swindon: English Heritage
- Palmer, R., 1976. Interrupted ditch enclosures in Britain: The use of aerial photography for comparative studies. *Proceedings of the Prehistoric Society* 42, 161–86
- Pollard, J. 2012. Living with sacred spaces: The henge monuments of Wessex. In Gibson (ed.) 2012b, 93–107
- Rassmann, K., Davis, S.R. & Gibson, J. 2019. Non- and minimally-invasive methods to investigate megalithic landscapes in the Brú na Bóinne World Heritage Site (Ireland) and Rousay, Orkney Islands in north-western Europe. *Journal of Neolithic Archaeology Special Issue* 5, 51–72
- Reimer, P. J., Austin, W. E. N., Bard, E., Bayliss, A., Blackwell, P. G., Bronk Ramsey, C., Butzin, M., Cheng, H., Edwards, R. L., Friedrich, M., Grootes, P. M., Guilderson, T. P., Hajdas, I., Heaton, T. J., Hogg, A. G., Hughen, K. A., Kromer, B., Manning, S. W., Muscheler, R., Palmer, J. G., Pearson, C., Plicht, J. van der, Reimer, R. W., Richards, D. A., Scott, E. M., Southon, J. R., Turney, C. S. M., Wacker, L., Adolphi, F., Büntgen, U., Capano, M., Fahrni, S. M., Fogtmann-Schulz, A., Friedrich, R., Köhler, P., Kudsk, S., Miyake, F., Olsen, J., Reinig, F., Sakamoto, M., Sookdeo, A. & Talamo, S. 2020. The IntCal20 Northern Hemisphere Radiocarbon Age Calibration Curve (0–55 cal KBP). *Radiocarbon* 62, 725–57
- Richards, C. 1996. Henges and water: Towards an elemental understanding of monumentality and landscape in Late Neolithic Britain. *Journal of Material Culture* 1, 313–36
- Richards, C. & Cummings, V. 2017. Passage graves as material technologies of wrapping. In P. Bickle; V. Cummings; D. Hofmann & J. Pollard (eds), *The Neolithic of Europe: Papers in honour of Alasdair Whittle*, 235–48. Oxford: Oxbow Books
- Richards, J. 1990. *The Stonehenge Environs Project: Archaeological Report*. London: Historic Buildings & Monuments Commission for England
- Robin, G., 2010. Spatial structures and symbolic systems in Irish and British passage tombs: The organization of architectural elements, parietal carved signs and funerary deposits. *Cambridge Archaeological Journal* 20, 373–418
- Ruggles, C.L.N. 1997. Whose equinox? *Journal for the History of Astronomy, Archaeoastronomy Supplement* 28, 45–50
- Schot, R. 2011. From cult centre to royal centre: Monuments, myths and other revelations at Uisneach. In R. Schot, C. Newman & E. Bhreathnach (eds), *Landscapes of Cult and Kingship*, 87–113. Dublin: Four Courts Press
- Sheridan, A. 2004. Going round in circles? Understanding the Irish Grooved Ware complex in its wider context. In H. Roche, E. Grogan, J. Bradley, J. Coles & B. Raftery (eds), *From Megaliths to Metals: Essays in honour of George Eogan*, 26–37. Oxford: Oxbow Books
- Smyth, J. 2009. *Brú na Bóinne World Heritage Site Research Framework*. Kilkenny: Heritage Council
- Smyth, J. 2011. The house and group identity in the Irish Neolithic. *Proceedings of the Royal Irish Academy Section C* 111, 1–31
- Smyth, J. 2014. *Settlement in the Irish Neolithic: New discoveries at the edge of Europe*. Oxford: Prehistoric Society Research Papers 6
- Startin, W. & Bradley, R. 1981. Some notes on work organisation and society in prehistoric Wessex. In C. Ruggles & A. Whittle. (eds), *Astronomy and Society During the Period 4000–1500 bc*, 289–96. Oxford: British Archaeological Report 88
- Stout, G. 1991. Embanked enclosures of the Boyne region. *Proceedings of the Royal Irish Academy Section C* 91, 245–84
- Sweetman, P.D. 1971. An earthen enclosure at Monknewtown, Slane, preliminary report. *Journal of the Royal Society of Antiquaries of Ireland* 101, 135–40
- Sweetman, P.D. 1976. An earthen enclosure at Monknewtown, Slane, Co. Meath. *Proceedings of the Royal Irish Academy Section C* 76, 25–73
- Sweetman, P.D., McCormick, F. & Mitchell, G.F. 1987. Excavation of a Late Neolithic/Early Bronze Age Site at Newgrange, Co. Meath. *Proceedings of the Royal Irish Academy Section C* 87, 283–98
- Sweetman, P.D., O'Sullivan, V.R., Gunn, H.M., Monk, J., Ó. Donnabháin, B. & Scannell, M. 1985. A Late Neolithic/Early Bronze Age Pit Circle at Newgrange, Co. Meath. *Proceedings of the Royal Irish Academy Section C* 85, 195–221
- Thomas, J. 2006. On the origins and development of cursus monuments in Britain. *Proceedings of the Prehistoric Society* 72, 229–41
- Thomas, J. 2015. *A Neolithic Ceremonial Complex in Galloway: Excavations at Dunragit and Droughduil, 1999–2002*. Oxford: Oxbow Books
- Topping, P. 1992. The Penrith henges: A survey by the Royal Commission on the Historical Monument of England. *Proceedings of the Prehistoric Society* 60, 285–324
- Towers, R., Card, N. & Edmonds, M. 2017. *The Ness of Brodgar: Digging Deeper*. Kirkwall: Orcadian Limited
- Waddell, J., Fenwick, J. & Barton, K. J. 2009. *Rathcroghan: Archaeological and geophysical survey in a ritual landscape*. Dublin: Wordwell
- Waddington, C., 1997. A review of 'pit alignments' and a tentative interpretation of the Milfield complex. *Durham Archaeological Journal* 13, 21–33.

- Wainwright, G.J. 1979, *Mount Pleasant Dorset: Excavations 1970–1971*. London: Report of the Research Committee of the Society of Antiquaries of London 37
- Wainwright, G.J. & Longworth, I.H., 1971. *Durrington Walls: Excavations 1966–1968*. London: Research Report of the Society of Antiquaries of London 29
- Whittle, A. 1997. *Sacred Mound and Holy Rings: Silbury Hill and West Kennet palisade enclosures: A later Neolithic complex in north Wiltshire*. Oxford: Oxbow Books
- Woodward, P.J. 1988. Pictures of the Neolithic: discoveries from the Flagstones House excavations, Dorchester, Dorset. *Antiquity* 62, 266–74
- Younger, R.K. 2015. De-henging the henge: a biographical approach to Scotland's henge monuments. Unpublished PhD thesis, University of Glasgow

RÉSUMÉ

Au delà Newgrange: Brú na Bóinne in the Later Neolithic, par Stephen Davis et Knut Rassmann.

Le site classé au patrimoine mondial de l'humanité, Brú na Bóinne, en Irlande est surtout célèbre pour ses monuments mégalithiques, en particulier les grandes tombes à couloir développées de Knowth, Dowth et Newgrange et son abondance d'art mégalithique. Toutefois, notre compréhension du paysage plus étendu du de Brú na Bóinne a changé au delà de toute reconnaissance dans la dernière décennie en raison de l'application de technologies modernes non intrusives, en particulier LiDAR et des relevés géophysiques à grande échelle et plus récemment comme résultat de l'été 2018 très chaud et très sec qui a révélé une série remarquable de traces dans les cultures entre Newgrange et la rivière Boyne. Malgré l'absence de fouilles, nous pouvons argumenter en nous appuyant sur leurs caractéristiques morphologiques qu'un grand nombre de ces structures relevées appartenaient à un corpus de structures rituelles/cérémonielles du fin néolithique comprenant des henges, des monuments 'carré dans un cercle', des enclos à palissade, fossés, alignement de trous/potaux. Ceux-ci montraient à la fois une extraordinaire variété et pourtant aussi une communalité de de dessin et d'architecture à la fois en tant que groupe et aussi avec les tombes à couloir qui les ont précédées. Cet article comporte une date présumée de la fin du Néolithique récent et fournit de nouveaux témoignages suggérant des parallèles à l'intérieur du Néolithique britannique mais aussi un développement insulaire à l'intérieur de certaines classes de monuments.

ZUSAMMENFASSUNG

Jenseits von Newgrange: Brú na Bóinne im Spätneolithikum, von Stephen Davis und Knut Rassmann

Die Welterbestätte Brú na Bóinne in Irland ist vor allem für seine megalithischen Denkmäler bekannt, insbesondere für die großen entwickelten Ganggräber von Knowth, Dowth und Newgrange, sowie für seine Fülle an megalithischer Kunst. Unser Verständnis der weiteren Landschaft von Brú na Bóinne hat sich jedoch im letzten Jahrzehnt drastisch verändert durch die Anwendung moderner, nicht-invasiver Surveytechnologien – insbesondere LiDAR und großflächige geophysikalische Vermessung – und zuletzt als Ergebnis des heißen, trockenen Sommers 2018, der eine Reihe bemerkenswerter Bewuchsmerkmale zwischen Newgrange und dem Fluss Boyne ans Licht brachte. Trotz fehlender Ausgrabungen kann aufgrund ihrer morphologischen Merkmale argumentiert werden, dass viele der aufgedeckten Strukturen zum Korpus spätneolithischer ritueller/zereemonieller Strukturen gehören, einschließlich Henges aus Erde, "Square-in-circle"-Monumente, Palisadeneinfriedungen und Gruben/Pfostenanlagen. Diese weisen sowohl eine außergewöhnliche Vielfalt auf als auch Gemeinsamkeiten in Design und Architektur, sowohl als Gruppe als auch mit den Ganggräbern, die ihnen vorausgingen. Dieser Beitrag bietet einen aktuellen Überblick über die spätneolithische und vermutlich spätneolithische Landschaft von Brú na Bóinne. Er liefert neue Belege und Erkenntnisse aus andauernden Surveykampagnen, die auf Parallelen innerhalb des britischen Neolithikums, aber auch auf eine insulare Entwicklung innerhalb einiger Denkmalklassen hinweisen.

RESUMEN

Más allá de Newgrange: Brú na Bóinne durante el Neolítico final, por Stephen Davis y Knut Rassmann

El sitio de Brú na Bóinne, en Irlanda, Patrimonio de la Humanidad, es el monumento megalítico más conocido de las grandes tumbas de corredor de Knowth, Dowth y Newgrange, y además presenta una gran abundancia de arte megalítico. Sin embargo, nuestra comprensión del paisaje de Brú na Bóinne se ha visto ampliada en la última década debido a la aplicación de modernas y tecnologías no invasivas de prospección –en particular LIDAR y prospección geofísica a gran escala- y, más recientemente, como resultado del verano de 2018 especialmente caluroso y seco, se ha observado una serie de marcas de cultivo entre Newgrange y el río Boyne. A pesar de la ausencia de una excavación, se puede sostener que las características morfológicas de muchas de las estructuras observadas pertenecen al corpus de construcciones rituales/ceremoniales del Neolítico antiguo, incluyendo henges, monumentos ‘square-in-circle’, recintos de empalizadas y alineamientos de postes y fosos. Estos muestran una gran diversidad, pero también elementos comunes de diseño y arquitectura, tanto como dentro del conjunto como con las tumbas de corredor precedentes. Este artículo aporta una puesta al día del Neolítico final y del paisaje presumiblemente del Neolítico final de Brú na Bóinne. Aporta nuevas evidencias y aspectos identificados en las campañas de prospección que actualmente se están llevando a cabo, sugiriendo paralelos dentro del Neolítico británico, pero también cierto carácter insular de algunos de estos monumentos.