

## Corrigendum


**Cite this article:** Horiba A, Hayashi M, Oka M, Funatsu T, Ishikawa T, Yamaguchi K, and Kawamata T. (2024) Gamma Knife treatment strategies for paediatric AVMs: approaches to refractory cases – CORRIGENDUM. *Journal of Radiotherapy in Practice*. 23(e6), 1–2. doi: page 1 of 2. doi: [10.1017/S1460396924000062](https://doi.org/10.1017/S1460396924000062)

**Keywords:**

gamma knife radiosurgery; arteriovenous malformation; pediatric

# Gamma Knife treatment strategies for paediatric AVMs: approaches to refractory cases – CORRIGENDUM

---

A. Horiba , M. Hayashi, M. Oka, T. Funatsu, T. Ishikawa, K. Yamaguchi and T. Kawamata

---

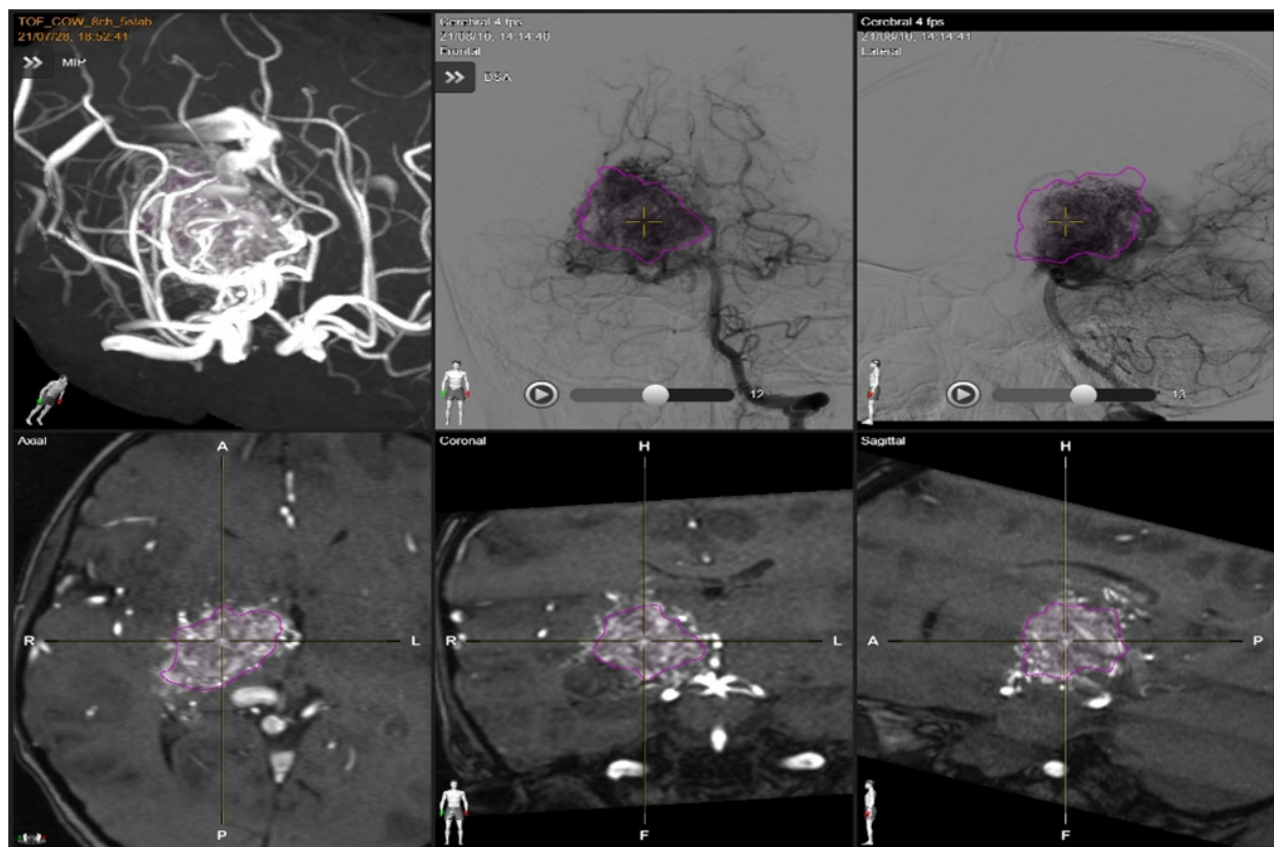
DOI: <https://doi.org/10.1017/S1460396924000013>, Published online by Cambridge University Press: 24 January 2024.

In the original article, figure 3 displayed confidential patient information. Figure 3 has since been updated within the article to remove the confidential information.

## Reference

Horiba A, Hayashi M, Oka M, et al. Gamma Knife treatment strategies for paediatric AVMs: approaches to refractory cases. *Journal of Radiotherapy in Practice*. 2024;23:e4. doi: [10.1017/S1460396924000013](https://doi.org/10.1017/S1460396924000013)

© The Author(s), 2024. Published by Cambridge University Press. This is an Open Access article, distributed under the terms of the Creative Commons Attribution licence (<https://creativecommons.org/licenses/by/4.0/>), which permits unrestricted re-use, distribution, and reproduction in any medium, provided the original work is properly cited.



**Figure 3.** Brainlab Elements workstation. Simple understanding of the supply region for each feeder from the entire nidus enclosed by the line. Red arrow; defective area surrounding by purple line indicates nidus part which feeding from anterior circulation.