

# Evidence-Based Acquisition through JISC Collections: A Guide for UK Librarians



[cambridge.org/core](https://www.cambridge.org/core)



**CAMBRIDGE**  
UNIVERSITY PRESS

# EBA and JISC Collections

---

## How does it work?



- ▶ UK Academic Institutions can now access Cambridge ebooks via an Evidence-Based Acquisitions model agreed through JISC collections
- ▶ Under this EBA model, institutions are given access to **tens of thousands of ebooks** from Cambridge and partner publishers before they make decisions about which titles to buy perpetual access to. The evidence to support the decision-making is supplied in the form of usage reports, indicating which titles are the most popular within the institution during that period.
- ▶ The JISC agreement allows you to select the full collection of ebooks, or lists in humanities, social sciences and science, technology, and medicine. The price you pay depends on your JISC banding tier.

## STEP 1: Payment

- Institutions can choose a 6 or 12-month access period to all Cambridge and partner ebooks.
- Payment is made before the access period according to the JISC banding for each institution.



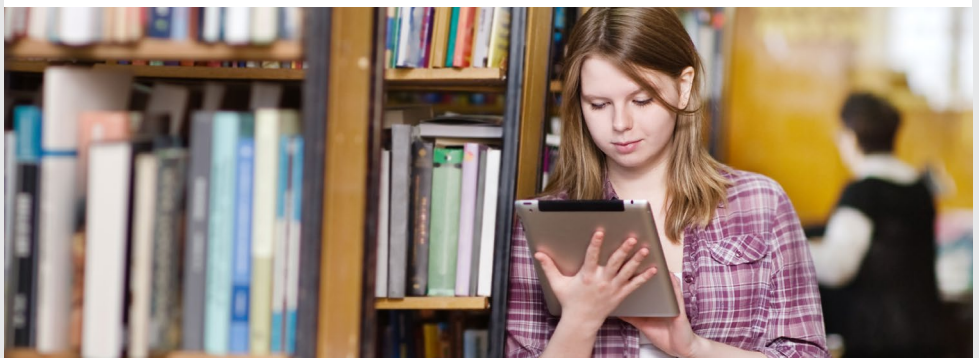
## STEP 2: Full Access

- Access is activated and usage is measured to help inform purchasing decisions



## STEP 3: Usage Report

- After a 6 or 12 month access period, institutions are provided with a usage report and can make additional payments, if they wish to purchase more titles in perpetuity. They can also request to begin another EBA under the same or different model.



**1 Does the package remain static during the period of the EBA?**

No, as we publish more ebooks they are added to your access. We will provide you with titles and records every month.

**2 How will Cambridge supply information about titles for our library catalogue?**

We will supply a list of titles and free cataloguer enhanced MARC records for you to add to your catalogue. We will also contact you each month with records for new titles added to the access.

**3 When the access is over, are we limited to allocating books to the value of the upfront fee?**

No, if at the end of the EBA access period you want to purchase books greater than the EBA fee, you are welcome to do so and pay the difference. Alternatively, if you are finding it difficult to decide which books to purchase, you could extend your EBA period for an additional fee.

**4 Is there a rental fee?**

No, the entire upfront fee is allocated against the list price of each of the books you are purchasing in perpetuity.

**5 Are we obligated to buy the most used titles?**

No, the decision to purchase rests with the librarian, we provide the usage data to help guide your decisions.

**6 How quickly can an EBA be set up?**

As soon we receive your EBA deposit fee, your access will be activated immediately and we will provide you with MARC records. We also give you the flexibility to choose your start date.

**7 We are interested in EBA but our subject focus is much narrower. Are there still options available?**

Yes, we can tailor specific EBA deals to your institution's needs. This is called a bespoke collection and falls outside the JISC collection, so please contact your Cambridge sales representative for more information if you're interested.

**8 How can we ensure the ebooks have high usage?**

We believe that your academics and students will use the EBA ebooks if they are aware of them. Cambridge has a dedicated library marketing team who can assist with raising awareness of the EBA. We can send email campaigns and provide posters and promotional materials, or simply offer advice to your library team on boosting usage. To request EBA marketing support please contact [library.marketing@cambridge.org](mailto:library.marketing@cambridge.org)