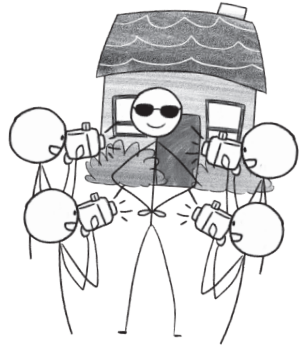


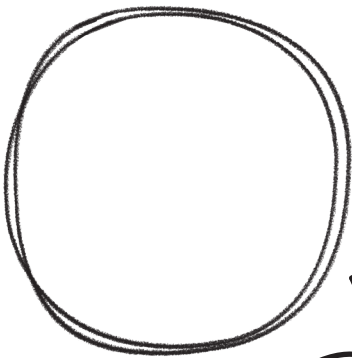


WHAT MAKES YOUR COMMUNITY SPECIAL?

TAKE A TOUR ... OF MY HOUSE

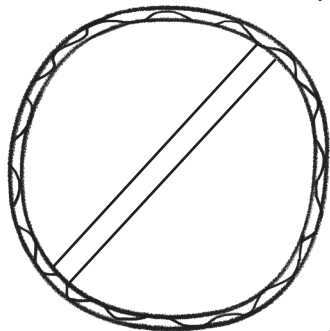
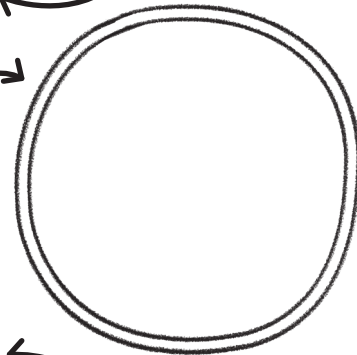


You're famous. You're a star. And now everyone wants to see where you live. Show everyone what they can see in your house.

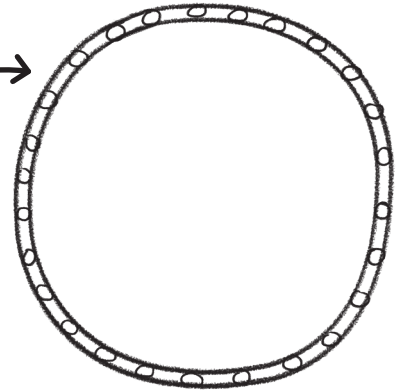


You have to see this!

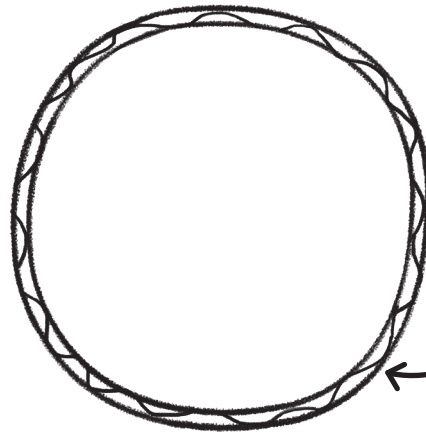
Take your selfies here!



In my house, you're going to eat this.

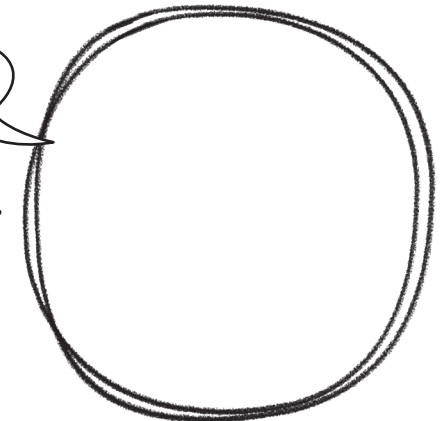


Buy your souvenirs here!



Konnichiwa!

Languages you will hear at my house.

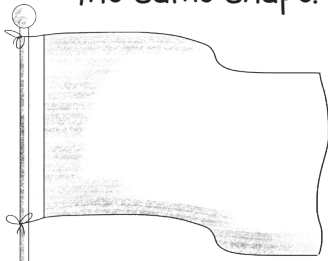


OUR FLAG

llse

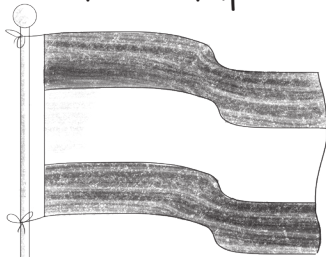
Everyone important has a flag,
but what about your family?
Create a family flag. Then, fly the
flag on your birthday.

Most flags are
the same shape.



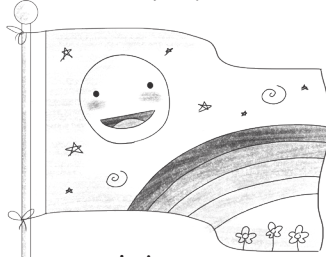
Use a different shape.

A lot of flags have
three stripes.



Use lots of
stripes.

Most flags are
serious.



Make your
family's flag fun.

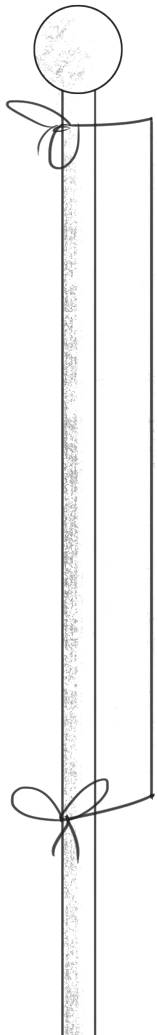
Most flags don't
have pictures.



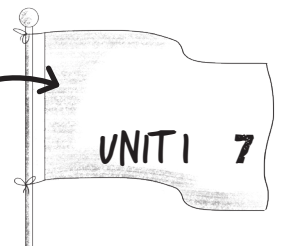
Draw pictures.



Tell the world who you are and what is important to you.



This page needs a flag.



MY BEST FRIEND IS A BEAR



Bears are big. Not just big, but really **BIG!**
A bear's paw is about the size of this book!
Bears are also strong. Not just strong, but really

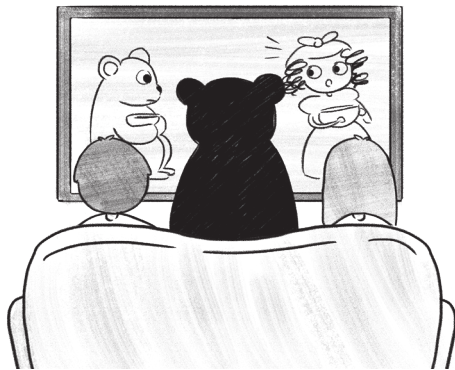
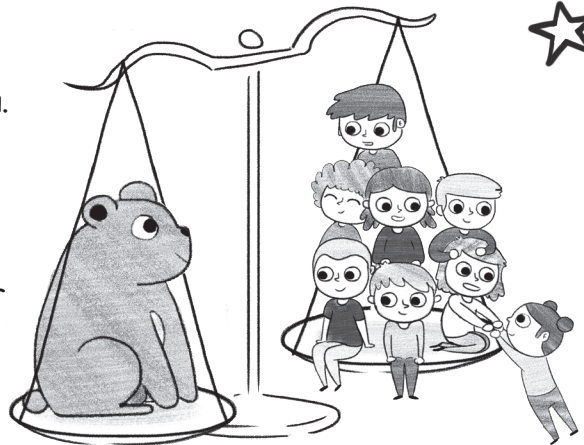
STRONG!



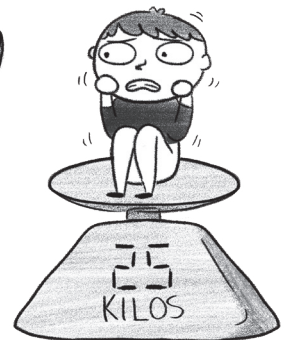
Sure, bears look cute, and baby bears look really cute, but so do a lot of babies when they're not screaming and crying.



Once upon a time ... there was a family in Russia. One day, they found a tiny bear. The family and the bear became best friends. The problem was that the tiny bear grew into a very, very, very **BIG** bear. Now, their bear/friend weighs 300 kilos. How many of your friends do you need to reach this weight?



The bear lives with the family. He plays with the family. He even watches TV with the family.



Remember: Bears look cute, but they can be very dangerous. Well, imagine this: A bear eats about 25 kilos of food every day. How much do you weigh?

WHAT DOES B.F.F. MEAN?



Black flying frogs?



Beautiful falling fish?



Best friend's feet?

... Hmm, what else?
Draw some ideas here.

HOW ABOUT BEST FRIEND'S FINGERS?
DECORATE THE FINGERS ON THE
HAND BELOW.



WHAT DOES B.F.F. REALLY MEAN?
THE ANSWER IS ON PAGE 48.